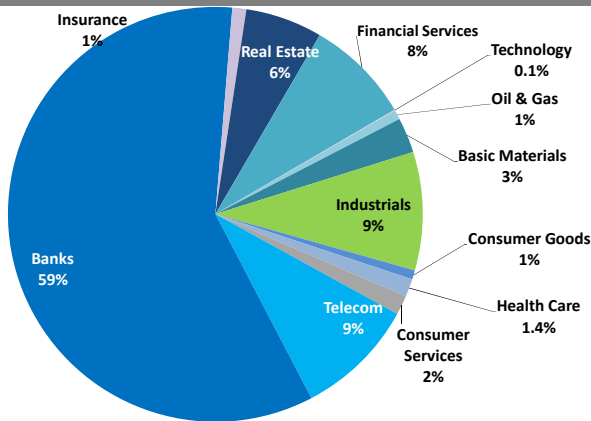


Boursa Kuwait Daily Report

September 16, 2019

Sector Weight by Market Cap



Market Capitalization - Sector Returns

	Market Cap. (KWD Mn)	DTD % Chg	MTD % Chg	YTD % Chg
Boursa Kuwait	32,604.7	▼ (1.6%)	(5.2%)	12.4%
Oil & Gas	240.9	▼ (5.4%)	(1.7%)	5.8%
Basic Materials	894.6	▼ (0.8%)	(2.1%)	(13.3%)
Industrials	3,008.5	▼ (1.9%)	(5.2%)	(11.6%)
Consumer Goods	232.0	▲ 0.7%	1.8%	13.6%
Health Care	457.1	= 0.0%	(1.0%)	(2.6%)
Consumer Services	482.5	▲ 0.4%	(1.1%)	(5.7%)
Telecommunications	3,050.8	▼ (1.1%)	(5.3%)	12.3%
Banks	19,230.1	▼ (2.1%)	(6.5%)	19.4%
Insurance	355.0	= 0.0%	3.0%	(1.5%)
Real Estate	1,957.4	▼ (1.0%)	(3.0%)	5.1%
Financial Services	2,673.1	▲ 0.4%	(1.3%)	27.5%
Technology	22.7	= 0.0%	(5.4%)	(16.6%)

Top 10 Companies by Market Capitalization

Company Name	Market Cap. (Mn KWD)	P/E (X)	ROE* (%)
1- National Bank of Kuwait	6,093.4	15.5	12.4%
2- Kuwait Finance House	4,646.3	19.4	12.7%
3- Ahli United Bank - Bahrain	2,360.3	10.8	18.5%
4- Zain	2,280.4	11.0	17.0%
5- Boubyan Bank	1,531.4	25.9	10.8%
6- Agility (PWC Logistics)	1,219.9	14.5	8.2%
7- Commercial Bank of Kuwait	996.0	14.8	9.2%
8- Gulf Bank	868.7	16.1	8.6%
9- Burgan Bank	866.3	11.3	10.3%
10- Mabane Co.	754.8	13.6	12.5%
Total	21,618	14.84	12.6%

*: ROE is calculated based on TTM 1H-2019 net profit & shareholders' equity as of 30-June-19

Top Movers and Most Active Stocks

Today's Top % Gainers	Close (KWD)	Change (KWD)	Percent Change
Munshaat Real Estate Projects Co.	0.078	0.007	9.9%
Gulf Cement Co.	0.060	0.005	8.4%
UniCap Investment and Finance	0.045	0.003	7.1%
Egypt Kuwait Holding Co.	0.455	0.030	7.1%
Al Masaken Intl. Real Estate Dev. Co.	0.074	0.005	6.6%

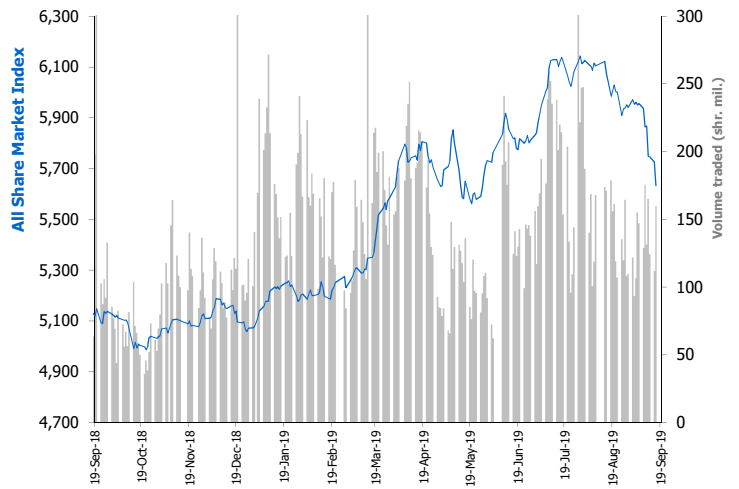
Today's Top % Losers	Close (KWD)	Change (KWD)	Percent Change
Hilal Cement Co.	0.090	(0.010)	(10.0%)
Independent Petroleum Group	0.435	(0.048)	(9.9%)
Real Estate Trade Centers Co.	0.022	(0.002)	(9.8%)
Kuwait Real Estate Holding Co.	0.025	(0.002)	(8.7%)
Kuwait Syrian Holding Co.	0.033	(0.002)	(6.5%)

Today's Most Active by Volume	Close (KWD)	Percent Change	Volume (Shares)
Ahli United Bank - Bahrain	0.269	(5.3%)	39,019,915
Kuwait Finance House	0.666	(3.5%)	16,345,757
Arzan Financial Group For Fin. & Invest.	0.025	(3.1%)	7,775,027
A'ayan Leasing & Investment Co.	0.052	(1.3%)	6,457,629
Gulf Bank	0.285	(1.7%)	5,855,383

Source: Boursa Kuwait, KAMCO Research

Market Breadth	31	73	71		
Benchmark Return	Closing Value	DTD Chg	MTD % Chg	YTD % Chg	
Premier Market Index	6,100.57	(133.9)	(2.1%)	(6.5%)	15.8%
Main Market Index	4,726.82	(6.7)	(0.1%)	(1.3%)	(0.2%)
All Share Market Index	5,632.79	(92.5)	(1.6%)	(5.2%)	10.9%
Market Cap (KWD Mn)	32,604.67	(533.5)	(1.6%)	(5.2%)	12.4%

Index Performance relative to Volume



Market Trading Data and Volatility

Trading Indicators	Today's Value	DTD Chg	DTD % Chg	Average Daily YTD 2019	Average Daily YTD 2018
Volume (Shrs Mn)	159.9	48.0	42.9%	158.3	83.7
Value Traded (KWD Mn)	43.0	9.6	28.7%	32.5	15.2
No. of Trades	7,285	1,946	36.4%	6,037	3,657

Today's Most Active by Value	Close (KWD)	Percent Change	Value (KWD)
Kuwait Finance House	0.666	(3.5%)	11,043,426
Ahli United Bank - Bahrain	0.269	(5.3%)	10,695,362
National Bank of Kuwait	0.934	(0.8%)	4,070,347
Agility (PWC Logistics)	0.692	(3.4%)	2,674,530
Zain	0.527	(1.5%)	1,731,131

Boursa Kuwait - Premier Market

Monday, September 16, 2019

Premier Market Stocks	Closing Price			Market Capitalization			Valuation Multiples				ROE	YTD-19 Price Return	YTD-19 Trading Indicators	
	KWD	DTD Chg. (KWD)	D-T-D Return	KWD Mn	Weight in Premier Index	Weight in Boursa Kuwait	P/E (X)	P/BV (X)	Yield	Beta			Volume (Mn Shrs)	Value (KWD Mn)
▼ National Bank of Kuwait	0.934	(0.008)	(0.8%)	6,093	25.7%	18.7%	15.5	1.91	#####	1.32	12.4%	17.6%	839.82	787.10
▼ Gulf Bank	0.285	(0.005)	(1.7%)	869	3.7%	2.7%	16.1	1.39	3.3%	0.93	8.6%	13.1%	1,979.56	582.65
▼ Kuwait International Bank	0.269	(0.004)	(1.5%)	290	1.2%	0.9%	15.7	1.06	3.5%	0.98	6.8%	6.0%	707.58	202.78
▼ Burgan Bank	0.330	(0.001)	(0.3%)	866	3.7%	2.7%	11.3	1.16	3.5%	1.00	10.3%	24.6%	517.39	172.52
▼ Kuwait Finance House	0.666	(0.024)	(3.5%)	4,646	19.6%	14.3%	19.4	2.47	2.7%	1.58	12.7%	19.9%	1,260.49	872.24
▼ Boubyan Bank	0.531	(0.006)	(1.1%)	1,531	6.5%	4.7%	25.9	2.79	1.2%	0.92	10.8%	14.5%	179.67	103.27
▼ Kuwait Projects Co. (Holding)	0.223	(0.006)	(2.6%)	446	1.9%	1.4%	15.0	1.74	4.1%	0.77	11.6%	7.2%	150.97	32.78
▼ Mabanee Co.	0.724	(0.018)	(2.4%)	755	3.2%	2.3%	13.6	1.70	1.6%	1.04	12.5%	26.6%	117.43	80.02
▼ National Industries Group (Holding)	0.220	(0.002)	(0.9%)	314	1.3%	1.0%	8.2	0.86	5.2%	1.34	10.4%	46.2%	1,183.50	260.07
▼ Boubyan Petrochemical Co.	0.769	(0.004)	(0.5%)	411	1.7%	1.3%	39.0	1.45	6.3%	0.73	3.7%	(21.1%)	59.70	52.37
▼ Qurain Petrochemicals Industries Co.	0.335	(0.005)	(1.5%)	368	1.6%	1.1%	10.6	0.87	4.5%	0.67	8.2%	(6.9%)	80.85	29.72
▼ Agility Public Warehousing Co.	0.692	(0.024)	(3.4%)	1,220	5.1%	3.7%	14.5	1.18	1.8%	1.49	8.2%	(0.8%)	250.49	196.90
▼ Mobile Telecommunications Co.	0.527	(0.008)	(1.5%)	2,280	9.6%	7.0%	11.0	1.87	5.7%	1.64	17.0%	17.4%	744.20	384.27
▼ Human Soft Holding Co.	3.060	(0.071)	(2.3%)	374	1.6%	1.1%	10.9	6.07	6.0%	0.44	55.5%	(6.7%)	25.15	81.13
▼ GFH Financial Group (B.S.C)	0.071	(0.001)	(1.1%)	262	1.1%	0.8%	7.1	0.83	6.0%	1.11	11.7%	(7.3%)	273.07	20.46
▼ Ahli United Bank (B.S.C)	0.269	(0.015)	(5.3%)	2,360	10.0%	7.2%	10.8	2.00	4.3%	0.81	18.5%	46.5%	2,336.79	602.96
▼ Warba Bank	0.239	(0.001)	(0.4%)	359	1.5%	1.1%	25.5	1.75	0.0%	0.91	6.8%	13.8%	625.95	151.35
▲ Mezzan Holding Co.	0.597	0.007	1.2%	186	0.8%	0.6%	22.8	1.71	2.6%	0.53	7.5%	19.4%	35.85	17.23
▼ Integrated Holding Co.	0.386	(0.002)	(0.5%)	85	0.4%	0.3%	7.5	1.31	10.4%	0.38	17.4%	(54.0%)	43.51	27.98
Subtotal- Premier Market Stocks	5,632.79	(92.52)	-1.62%	23,717	100%	73%	14.6	1.79	3.47%		12.3%	10.9%	11,411.97	4,657.80
Remaining of the Market				8,888		27%	17.7	0.83	4.37%		4.7%		16,137.77	989.37

Boursa Kuwait Daily Bulletin

Monday, September 16, 2019

Company	Reuters Ticker	Valuation Multiples				Price (KWD)		MKT Cap (KWD Mn.)	52 Weeks High (KWD)	52 Weeks Low (KWD)	YTD-19 Return #	Daily Trading Data		YTD-19 Capital Turnover	ROE
		Trailing P/E (X)	Trailing P/BV (X)	Dividend Yield	Beta	Closing	DTD Change					Volume (Shrs.)	Value (KWD)		
= Senergy Holding Co.	SENE.KW	NM	0.27	0.00%	1.39	0.020	0.000	3.9	0.034	0.017	(36.7%)	0	0	7.1%	NM
▼ Independent Petroleum Group	IPGK.KW	12.4	0.87	5.29%	0.35	0.435	(0.048)	82.0	0.490	0.379	8.5%	16,275	7,080	2.9%	7.0%
▼ National Petroleum Services Co.	NAPS.KW	8.4	2.99	6.47%	0.19	1.050	(0.050)	105.0	1.170	0.810	14.1%	19,513	20,391	0.7%	35.5%
= The Energy House Co.	ENER.KW	NM	0.65	0.00%	0.87	0.023	0.000	16.9	0.051	0.018	(38.0%)	150	3	2.9%	NM
▲ Gulf Petroleum Investment	GPIK.KW	NM	0.25	0.00%	1.22	0.023	0.001	10.5	0.033	0.020	(22.0%)	614,690	13,615	120.9%	NM
= Burgan Co. for Drilling, Tdg. & Maint. *	ABAR.KW	10.1	0.35	0.00%	NA	0.094	0.000	22.6	0.123	0.085	(1.6%)	0	0	0.5%	3.5%
Oil & Gas		16.9	0.87	4.62%				240.9			5.8%	650,628	41,090		5.2%
= Kuwait Foundry Co.	KFDC.KW	39.1	0.69	4.06%	0.44	0.419	0.000	30.3	0.508	0.175	3.1%	14,589	6,096	32.3%	1.8%
▼ Boubyan Petrochemicals Co.*	BPCC.KW	39.0	1.45	6.32%	0.73	0.769	(0.004)	411.3	1.070	0.905	(21.1%)	68,887	52,334	11.2%	3.7%
= Al Kout for Industrial Projects Co.	ALKK.KW	13.5	2.72	5.95%	0.05	0.840	0.000	84.8	0.840	0.320	0.0%	0	0	0.0%	20.2%
▼ Qurain Petrochemical Industries Co. *	ALQK.KW	10.6	0.87	4.52%	0.67	0.335	(0.005)	368.2	0.415	0.329	(6.9%)	653,247	220,245	7.4%	8.2%
Basic Materials		17.1	1.15	5.47%				894.6			(13.3%)	736,723	278,675		6.7%
▼ Specialities Group Holding Co.	SPEC.KW	6.4	0.36	0.00%	0.36	0.070	(0.002)	10.5	0.082	0.060	2.5%	16,053	1,124	27.7%	5.7%
= Kuwait Cement Co.	KCEM.KW	35.0	0.98	5.38%	0.43	0.271	0.000	198.7	0.380	0.327	(28.5%)	0	0	0.4%	2.8%
▼ Gulf Cable & Electrical Ind. Co.	CABL.KW	14.0	0.53	6.44%	1.05	0.419	(0.011)	88.0	0.490	0.346	19.4%	211,140	88,090	24.1%	3.8%
▼ Heavy Eng'g Ind. & Shipbuilding Co.	SHIP.KW	6.9	1.27	7.56%	0.48	0.397	(0.003)	71.6	0.519	0.370	(8.1%)	110,910	43,749	44.4%	18.3%
▼ Kuwait Portland Cement Co.	PCEM.KW	11.4	1.75	8.37%	0.49	1.195	(0.004)	119.8	1.459	0.149	5.0%	39,750	47,601	7.7%	15.3%
= Shuaiba Industrial Co.	PAPE.KW	23.6	0.91	6.16%	0.19	0.160	0.000	16.1	0.220	1.20%	(14.9%)	0	0	0.2%	3.8%
= Metal & Recycling Co.	MRCK.KW	NM	0.49	0.00%	0.04	0.060	0.000	6.0	0.089	1.20%	(4.8%)	0	0	0.4%	NM
▲ ACICO Industries Co.	ACIC.KW	NM	0.46	3.46%	0.40	0.144	0.006	45.7	0.215	0.150	(13.8%)	690	99	7.7%	NM
▼ Hilal Cement Co.	HCKK.KW	19.1	0.69	16.67%	0.17	0.090	(0.010)	9.1	0.146	0.067	(19.6%)	5,000	450	1.0%	3.6%
▼ National Industries Co.	NIBM.KW	16.7	0.74	5.77%	0.18	0.167	(0.001)	60.2	0.202	0.165	(16.5%)	429	72	0.9%	4.4%
▼ Equipment Holding Co.	EQUI.KW	NM	0.42	0.00%	1.32	0.019	(0.000)	2.6	0.032	0.025	(30.4%)	466,540	8,450	27.0%	NM
= National Co. for Consumer Industries	NCCI.KW	NM	0.61	0.00%	NA	0.055	0.000	5.0	0.065	0.065	25.0%	0	0	0.4%	0.3%
▼ Salbookh Trading Co.	SALB.KW	NM	0.52	0.00%	0.78	0.042	(0.001)	4.4	0.052	0.036	5.0%	619,187	25,519	53.8%	NM
▼ Agility (PWC Logistics)	AGLT.KW	14.5	1.18	1.78%	1.49	0.692	(0.024)	1,219.9	0.943	0.305	(0.8%)	3,827,152	2,674,530	14.2%	8.2%
= Educational Holding Group*	EDUK.KW	12.0	1.94	4.69%	0.16	0.320	0.000	78.5	0.338	0.054	3.2%	0	0	0.7%	16.2%
▼ National Cleaning Co.	CLEA.KW	8.4	0.40	8.51%	0.91	0.057	(0.001)	14.2	0.072	0.053	(0.7%)	1,000	57	6.3%	4.8%
▼ Kuwait & Gulf Link Transport Co.	KGLK.KW	11.6	0.31	6.56%	0.90	0.073	(0.003)	20.1	0.107	0.090	(24.2%)	65,925	4,793	16.0%	2.6%
= Kuwait Co. For Process Plant Const. & Cont.	KPCP.KW	5.1	0.86	9.21%	0.34	0.210	0.000	21.1	0.259	0.220	(8.7%)	0	0	2.9%	16.7%
▼ Humansoft Holding Co.	HUMN.KW	10.9	6.07	6.02%	0.44	3.060	(0.071)	374.0	3.500	2.996	(6.7%)	183,948	564,990	20.6%	55.5%
= Gulf Franchising Co.	GFCI.KW	NM	1.92	0.00%	NA	0.160	0.000	6.4	0.249	0.010	128.6%	0	0	0.0%	NM
= National Shooting Co.	SHOOTING.KW	NM	0.16	0.00%	1.72	0.011	0.000	3.0	0.018	0.015	(33.1%)	380,798	3,888	17.2%	NM
▼ Combined Group Contracting Co.	CGCK.KW	6.7	0.80	8.71%	0.07	0.229	(0.003)	37.4	0.400	0.295	(28.4%)	2,575,275	589,754	92.9%	12.0%
= United Projects Group	UPAC.KW	7.4	0.93	4.03%	0.04	0.402	0.000	66.1	0.660	0.217	(36.7%)	0	0	0.6%	12.5%
▼ ALAFCO Aviation Lease & Finance Co.*	ALAF.KW	14.4	0.78	3.88%	0.41	0.258	(0.002)	245.6	0.372	0.054	(26.1%)	23,558	5,985	13.1%	5.4%
▲ Mubarrad Holding Co.	MBRD.KW	5.8	0.50	8.06%	0.84	0.061	0.001	10.0	0.080	0.038	(6.2%)	290,316	17,542	39.8%	8.6%
▼ KGL Logistics Co.	LOGK.KW	5.6	0.28	0.00%	0.80	0.039	(0.001)	28.4	0.045	0.040	(4.2%)	1,334,919	51,532	44.9%	5.1%
▼ Integrated holding Co.	INTEGRATED.KW	7.5	1.31	10.36%	0.38	0.386	(0.002)	84.9	0.890	0.720	(54.0%)	118,444	45,334	19.8%	17.4%
▼ Sharjah Cement Co.	SCEM.KW	29.1	0.32	13.11%	0.44	0.061	(0.003)	37.1	0.087	0.052	(29.8%)	344,970	21,025	0.7%	1.1%
▲ Gulf Cement Co.	GCEM.KW	NM	0.59	13.42%	0.40	0.060	0.005	48.9	0.079	0.058	(12.2%)	93,068	5,237	1.2%	NM
= Umm Al-Qaiwain General Investments Co.	QIC.KW	15.3	0.46	9.74%	0.25	0.072	0.000	26.1	0.091	0.044	8.1%	0	0	0.7%	3.0%
▼ Fujairah Cement Industries Co.	FCEM.KW	22.3	0.21	12.24%	0.55	0.049	(0.002)	17.4	0.066	0.053	(22.8%)	200,000	9,800	7.2%	0.9%
= Ras-Al-Khaimah for White Cement Co.	RKWC.KW	30.9	0.51	7.94%	0.22	0.063	0.000	31.5	0.085	0.059	(15.9%)	10,010	571	0.5%	1.7%
Industrials		13.8	0.98	4.50%				3,008.5			(11.6%)	10,919,082	4,210,192		7.1%

Boursa Kuwait Daily Bulletin

Monday, September 16, 2019

Company	Reuters Ticker	Valuation Multiples				Price (KWD)		MKT Cap (KWD Mn.)	52 Weeks High (KWD)	52 Weeks Low (KWD)	YTD-19 Return #	Daily Trading Data		YTD-19	
		Trailing P/E (X)	Trailing P/BV (X)	Dividend Yield	Beta	Closing	DTD Change					Volume (Shrs.)	Value (KWD)	Capital Turnover	ROE
= Palms Agro Production Co.	PAPK.KW	NM	0.46	16.92%	0.28	0.059	0.000	3.1	0.076	0.047	(1.7%)	0	0	0.8%	NM
▼ Livestock Transport & Trading Co.	CATT.KW	NM	0.99	2.61%	0.41	0.185	(0.002)	40.1	0.213	0.025	(1.6%)	15,000	2,705	1.9%	NM
▼ Danah Alsafat Foodstuff Co.	DANK.KW	NM	0.32	0.00%	0.56	0.025	(0.000)	3.0	0.046	0.036	(35.2%)	469,331	11,577	79.1%	NM
▲ Mezzan Holding Co.	MEZZ.KW	22.8	1.71	2.63%	0.53	0.597	0.007	185.9	0.700	0.431	19.4%	25,832	14,631	11.5%	7.5%
Consumer Goods		62.3	1.41	2.78%				232.0			13.6%	510,163	28,913		2.3%
= Advanced Technology Co.	ATCK.KW	29.8	2.34	1.67%	NA	0.900	0.000	135.0	1.000	0.067	(10.0%)	500	450	0.0%	7.9%
= Yiacco Medical Co.	YIAC.KW	NM	12.28	0.00%	0.58	0.067	0.000	12.1	0.130	0.080	(37.9%)	0	0	0.0%	NM
= Al-Maidan Clinic For Oral Health Services Co.	MIDAN.KW	48.1	8.91	0.40%	0.00	1.240	0.000	310.0	1.260	1.080	3.3%	0	0	0.2%	18.5%
Health Care		NM	4.89	0.77%				457.1			(2.6%)	500	450		3.7%
= Kuwait National Cinema Co.	KCIN.KW	10.3	1.07	5.83%	0.16	0.790	0.000	79.8	1.090	0.830	(26.1%)	0	0	0.4%	10.4%
= Kuwait Hotels Co.	KHOT.KW	NM	1.17	0.00%	NA	0.100	0.000	5.8	0.130	0.043	(23.1%)	0	0	0.0%	NM
= Sultan Center Food Products Co.	SCFK.KW	NM	0.59	0.00%	0.67	0.045	0.000	26.0	0.062	0.013	(14.8%)	27,182	1,193	10.9%	NM
= Kuwait Cable Vision Co.	KWTV.KW	NM	0.87	0.00%	0.36	0.024	0.000	0.9	0.033	0.008	20.0%	0	0	2.3%	NM
▲ IFA Hotels & Resorts Co.*	IFAH.KW	NM	0.81	0.00%	0.14	0.048	0.003	30.4	0.098	0.054	(46.2%)	5,566	267	0.6%	NM
= Oula Fuel Marketing Co.	OULA.KW	12.4	0.68	4.17%	0.44	0.118	0.000	47.7	0.132	0.050	0.0%	49,530	5,835	4.4%	5.5%
▲ Kuwait Resorts Co.	MUNK.KW	8.8	0.41	8.55%	0.69	0.059	0.001	11.5	0.067	0.054	3.9%	18,181	1,026	47.3%	4.7%
= Jazeera Airways Co.	JAZK.KW	16.9	6.18	3.62%	0.27	0.967	0.000	193.4	0.990	0.114	32.5%	4,274	3,985	10.0%	36.6%
▼ Soor Fuel Marketing Co.	SOOR.KW	13.9	0.73	4.23%	0.39	0.117	(0.001)	47.4	0.129	0.110	1.7%	27,164	3,200	3.9%	5.3%
= Future Kid Entertainment and R.E Co.	KIDK.KW	12.9	0.51	13.74%	NA	0.086	0.000	10.0	0.135	0.088	(9.4%)	0	0	3.0%	4.0%
▲ Al Rai Media Group Co.	ALRA.KW	NM	0.66	NM	0.46	0.039	0.002	9.2	0.089	0.041	(35.4%)	87,300	2,999	4.8%	NM
= Jiyad Holding Co	JIYAD.KW	10.3	0.40	0.00%	0.68	0.044	0.000	15.3	0.093	0.064	(38.9%)	0	0	43.1%	3.9%
= Al Eid Food Co.	ALEID.KW	3.6	0.30	0.00%	0.05	0.050	0.000	5.1	0.081	0.060	(23.6%)	237,000	12,142	2.0%	8.2%
Consumer Services		NM	1.08	4.89%				482.5			(5.7%)	456,197	30,647		NM
▼ Zain	ZAIN.KW	11.0	1.87	5.69%	1.64	0.527	(0.008)	2,280.4	0.603	0.435	17.4%	3,291,727	1,731,131	17.2%	17.0%
▲ National Mobile Telecom Co.	OORE.KW	10.4	0.65	6.94%	0.52	0.716	0.006	360.9	0.785	0.010	0.3%	62,144	44,097	2.0%	6.2%
▼ AAN digital services Co.	AAN.KW	18.5	0.49	0.00%	1.64	0.017	(0.001)	14.5	0.021	0.016	(4.6%)	1,900,631	31,786	45.5%	2.6%
▼ Kuwait Telecommunication Co.	VIVA.KW	8.5	2.06	5.06%	0.71	0.791	(0.002)	395.0	0.899	0.707	(1.1%)	191,645	151,744	1.6%	24.3%
Telecommunications		10.5	1.53	5.73%				3,050.8			12.3%	5,446,147	1,958,757		14.5%
▼ National Bank of Kuwait	NBKK.KW	15.5	1.91	3.52%	1.32	0.934	(0.008)	6,093.4	1.024	0.270	17.6%	4,383,998	4,070,347	12.9%	12.4%
▼ Gulf Bank	GBKK.KW	16.1	1.39	3.34%	0.93	0.285	(0.005)	868.7	0.330	0.246	13.1%	5,855,383	1,675,429	64.9%	8.6%
▼ Commercial Bank of Kuwait	CBKK.KW	14.8	1.36	3.61%	0.69	0.500	(0.001)	996.0	0.700	0.297	10.0%	2,138,806	1,069,403	2.3%	9.2%
▼ Ahli Bank of Kuwait	ABKK.KW	10.6	0.81	4.68%	0.61	0.297	(0.011)	480.9	0.350	0.285	0.7%	444,399	133,278	1.4%	7.7%
▼ Ahli United Bank - Kuwait	BKME.KW	12.6	1.55	3.96%	0.77	0.325	(0.002)	670.4	0.369	0.248	14.9%	425,494	135,637	5.6%	12.3%
▼ Kuwait International Bank	KIBK.KW	15.7	1.06	3.54%	0.98	0.269	(0.004)	290.2	0.343	0.228	6.0%	2,736,526	738,114	65.6%	6.8%
▼ Burgan Bank	BURG.KW	11.3	1.16	3.45%	1.00	0.330	(0.001)	866.3	0.405	0.249	24.6%	3,865,822	1,274,799	19.7%	10.3%
▼ Kuwait Finance House	KFH.KW	19.4	2.47	2.70%	1.58	0.666	(0.024)	4,646.3	0.800	0.528	19.9%	16,345,757	11,043,426	18.1%	12.7%
▼ Boubyan Bank	BOUK.KW	25.9	2.79	1.25%	0.92	0.531	(0.006)	1,531.4	0.630	0.215	14.5%	488,826	260,733	6.2%	10.8%
▼ Warba Bank	WARB.KW	25.5	1.75	0.00%	0.91	0.239	(0.001)	358.5	0.265	0.205	13.8%	3,025,849	726,043	41.7%	6.8%
▼ Ahli United Bank - Bahrain	AUBK.KW	10.8	2.00	4.32%	0.81	0.269	(0.015)	2,360.3	0.299	0.019	46.5%	39,019,915	10,695,362	26.6%	18.5%
= Ithmaar Bank	ITHMR.KW	NM	2.38	0.00%	1.44	0.022	0.000	67.6	0.032	0.024	(10.8%)	0	0	4.9%	NM
Banks		15.6	1.84	3.20%				19,230.1			19.4%	78,730,775	31,822,573		11.8%

Boursa Kuwait Daily Bulletin

Monday, September 16, 2019

Company	Reuters Ticker	Valuation Multiples				Price (KWD)		MKT Cap (KWD Mn.)	52 Weeks High (KWD)	52 Weeks Low (KWD)	YTD-19 Return #	Daily Trading Data		YTD-19 Capital Turnover	ROE
		Trailing P/E (X)	Trailing P/BV (X)	Dividend Yield	Beta	Closing	DTD Change					Volume (Shrs.)	Value (KWD)		
= Kuwait Insurance Co.	KINS.KW	6.0	0.66	7.15%	0.04	0.333	0.000	64.6	0.427	0.305	(7.5%)	0	0	2.3%	10.9%
= Gulf Insurance Group	GINS.KW	9.5	1.40	5.07%	0.04	0.680	0.000	127.2	0.730	0.401	3.8%	0	0	4.5%	14.8%
= Ahleiah Insurance Co.	AINS.KW	8.7	0.84	8.00%	0.19	0.430	0.000	86.0	0.450	0.056	0.7%	0	0	1.9%	9.6%
= Warba Insurance Co.	WINS.KW	7.6	0.29	0.00%	0.57	0.065	0.000	11.2	0.085	0.061	(2.0%)	0	0	2.3%	3.9%
= Kuwait Reinsurance Co.	KWRE.KW	6.9	0.58	2.97%	0.01	0.158	0.000	29.8	0.198	0.036	(14.1%)	0	0	0.3%	8.4%
= First Takaful Insurance Co.	FTIK.KW	5.1	0.45	0.00%	0.12	0.043	0.000	4.5	0.053	0.027	(3.6%)	0	0	1.7%	8.8%
= Wethaq Takaful Insurance Co.	WETH.KW	68.9	0.27	0.00%	0.68	0.028	0.000	3.1	0.045	0.024	0.4%	0	0	15.3%	0.4%
= Bahrain Kuwait Insurance Co.	BKIK.KW	10.0	0.99	12.50%	0.04	0.200	0.000	28.6	N/A	N/A	0.0%	0	0	0.0%	9.9%
Insurance		8.1	0.82	6.31%				355.0			(1.5%)	0	0		10.1%
= Sokouk Holding Co.	SHCK.KW	NM	0.40	0.00%	1.39	0.033	0.000	19.3	0.048	0.038	(17.7%)	58,000	1,887	33.4%	NM
▼ Kuwait Real Estate Co.	KREK.KW	9.1	0.57	0.00%	1.31	0.080	(0.001)	75.8	0.090	0.044	54.2%	3,198,050	253,728	62.1%	6.2%
= United Real Estate Co.	UREK.KW	NM	0.38	0.00%	0.64	0.062	0.000	73.9	0.066	0.057	3.7%	0	0	2.2%	NM
▼ National Real Estate Co.	NREK.KW	10.7	0.42	0.00%	1.33	0.080	(0.002)	108.9	0.107	0.080	(12.1%)	119,928	9,568	12.5%	3.9%
= Salhia Real Estate Co.	SREK.KW	10.7	1.16	5.74%	0.30	0.336	0.000	172.3	0.350	0.324	1.8%	0	0	3.8%	10.9%
= Tamdeen Real Estate Co.	TAMK.KW	17.5	0.74	3.24%	0.26	0.300	0.000	129.6	0.400	0.123	(14.3%)	0	0	0.5%	4.2%
= Ajjal Real Estate Entertainment Co.	AREC.KW	12.8	0.19	3.85%	0.37	0.129	0.000	23.9	0.152	0.031	(4.4%)	0	0	3.1%	1.5%
= Al Massaleh Real Estate Co.	MREC.KW	NM	0.40	0.00%	0.42	0.038	0.000	8.9	0.049	0.025	3.6%	0	0	3.6%	NM
▲ Arab Real Estate Co.	ARAB.KW	NM	0.24	0.00%	1.35	0.026	0.000	13.4	0.035	0.027	(8.7%)	85,186	2,206	26.6%	NM
▲ AL-Enma'a Real Estate Co.*	ENMA.KW	NM	0.46	0.00%	0.76	0.046	0.001	20.9	0.050	0.030	41.9%	51,090	2,400	60.9%	NM
▼ Mabaneer Co.	MABK.KW	13.6	1.70	1.56%	1.04	0.724	(0.018)	754.8	0.800	0.074	26.6%	704,301	512,845	11.3%	12.5%
= Injazat Real Estate Development Co.	INJA.KW	6.7	0.46	8.52%	0.49	0.080	0.000	27.7	0.090	0.008	(7.0%)	0	0	2.5%	6.9%
▲ Investors Holding Group Co.	INVK.KW	NM	0.24	0.00%	1.58	0.009	0.000	5.8	0.014	0.012	(23.8%)	2,633,160	24,184	128.8%	NM
▼ International Resorts Co.	IRCK.KW	2.5	0.20	0.00%	1.40	0.013	(0.000)	2.0	0.030	0.018	(42.0%)	9,000	117	3.4%	8.3%
▲ The Commercial Real Estate Co.	TIJK.KW	12.4	0.57	5.43%	0.77	0.093	0.000	163.0	0.102	0.030	1.1%	578,899	53,501	7.6%	4.6%
= Sanam Real Estate Co.	SANK.KW	NM	0.47	0.00%	0.44	0.038	0.000	4.6	0.050	0.028	8.1%	0	0	3.4%	NM
▲ A'ayan Real Estate Co.	AYRE.KW	3.9	0.37	7.76%	0.86	0.064	0.001	26.4	0.068	0.055	10.2%	351,600	22,165	16.6%	9.7%
= Aqar Real Estate Investment Co.	AQAR.KW	16.1	0.66	5.82%	NA	0.078	0.000	18.2	0.082	0.023	27.0%	0	0	2.9%	4.1%
▼ Kuwait Real Estate Holding Co.	ALAQ.KW	47.7	0.43	0.00%	1.01	0.025	(0.002)	4.8	0.032	0.020	1.2%	118,000	2,986	3.5%	0.9%
▲ MAZAYA Holding Co.	MAZA.KW	11.0	0.40	14.97%	1.35	0.053	0.001	36.7	0.081	0.070	(24.0%)	449,200	23,567	49.5%	3.6%
= Tijara Real Estate & Investment Co.	TIJA.KW	16.5	0.40	4.76%	0.63	0.042	0.000	15.5	0.056	0.017	(14.3%)	0	0	2.2%	2.4%
▼ Al TAMEER Real Estate Investment Co.	AMAR.KW	7.4	0.26	0.00%	1.37	0.019	(0.000)	4.4	0.046	0.026	(33.9%)	102,011	1,858	134.9%	3.5%
= Arkan Al-Kuwait Real Estate Co. *	ARKK.KW	16.3	0.55	10.24%	0.34	0.078	0.000	19.6	0.091	0.072	(6.5%)	0	0	3.1%	3.4%
= Al-Argan International Real Estate Co.	ARGK.KW	67.6	0.42	3.42%	0.39	0.141	0.000	37.4	0.176	0.012	3.7%	0	0	0.1%	0.6%
▼ Abyaar Real Estate Development Co.	ABYR.KW	NM	0.23	0.00%	1.57	0.013	(0.001)	14.7	0.019	0.015	(12.5%)	2,572,240	34,395	91.1%	NM
▲ Munshaat Real Estate Projects Co.	MUNS.KW	NM	0.55	0.00%	1.00	0.078	0.007	25.0	0.120	0.026	(22.3%)	100	8	4.2%	NM
▼ First Dubai For Real Estate Development	FIRST.KW	15.4	0.43	0.00%	1.56	0.032	(0.001)	31.5	0.043	0.035	(16.4%)	391,235	12,400	8.5%	2.8%
▲ Kuwait Business Town Real Estate Co.	KBTK.KW	8.3	0.37	7.16%	1.29	0.040	0.001	25.0	0.052	0.044	(7.3%)	120,100	4,784	6.1%	4.5%
= Real Estate Asset Management Co.	REAM.KW	20.9	0.64	4.97%	0.03	0.095	0.000	10.5	0.220	0.033	(44.4%)	0	0	2.5%	3.1%
▼ MENA Real Estate Co. *	MENK.KW	NM	0.26	0.00%	0.94	0.039	(0.000)	5.3	0.050	0.017	8.7%	4,838,728	187,886	257.8%	NM
▲ Al Mudon International Real Estate Co.	ALMK.KW	NM	0.13	0.00%	1.32	0.018	0.001	1.8	0.032	0.020	(38.2%)	50,100	867	28.1%	NM
▼ Real Estate Trade Centers Co.	MARA.KW	NM	0.10	0.00%	0.54	0.022	(0.002)	3.0	0.037	0.019	0.5%	8,500	188	23.9%	NM
▼ Kuwait Remal Real Estate Co.	REMA.KW	NM	0.33	0.00%	1.02	0.024	(0.001)	7.4	0.050	0.029	(42.6%)	271,752	6,602	46.9%	NM
▲ Mashaer Holding Co.	MASHAER.KW	NM	0.54	0.00%	0.29	0.069	0.000	12.3	0.088	0.015	(18.0%)	623,550	42,387	185.5%	NM
= Effect Real Estate Co.	EFFECT.KW	NM	0.29	0.00%	0.83	0.021	0.000	1.7	0.026	0.009	125.3%	0	0	17.3%	NM
▲ Ajwan Gulf Real Estate Co.	AJWN.KW	NM	0.24	0.00%	0.48	0.013	0.000	2.8	0.024	0.017	(26.4%)	998,541	13,169	118.6%	NM
▲ Al Masaken Intl. Real Estate Dev. Co.	MASKN.KW	NM	0.89	0.00%	0.33	0.074	0.005	7.4	0.100	0.036	18.4%	625	46	0.2%	NM
= Dalqan Real Estate Co.	DALQ.KW	NM	2.73	0.00%	NA	0.350	0.000	17.5	0.350	0.162	0.0%	0	0	0.0%	2.1%
= Dar Al Thuraya Real Estate Co.	THURY.KW	20.9	1.53	0.00%	NA	0.162	0.000	23.7	0.198	0.000	(26.4%)	0	0	0.0%	7.3%
Real Estate		35.6	0.69	2.70%				1,957.4			5.1%	18,333,896	1,213,743		1.9%

Boursa Kuwait Daily Bulletin

Monday, September 16, 2019

Company	Reuters Ticker	Valuation Multiples				Price (KWD)		MKT Cap (KWD Mn.)	52 Weeks High (KWD)	52 Weeks Low (KWD)	YTD-19 Return #	Daily Trading Data		YTD-19	
		Trailing P/E (X)	Trailing P/BV (X)	Dividend Yield	Beta	Closing	DTD Change					Volume (Shrs.)	Value (KWD)	Capital Turnover	ROE
▼ Kuwait Investment Co.	KINV.KW	5.3	0.64	7.15%	0.63	0.139	(0.001)	76.6	0.147	0.117	6.9%	60,015	8,202	19.8%	11.9%
▲ Commercial Facilities Co.	FACI.KW	7.6	0.66	8.21%	0.55	0.196	0.002	105.2	0.211	0.016	12.0%	30,000	5,890	3.5%	8.8%
▼ Int'l Financial Advisors Co.	IFIN.KW	NM	0.66	0.00%	1.65	0.053	(0.000)	14.1	0.054	0.021	88.3%	230,145	12,098	95.6%	NM
▲ National Investment Co.	NINV.KW	10.2	0.63	4.90%	1.33	0.130	0.001	113.9	0.145	0.070	57.6%	1,015	132	27.4%	6.2%
▼ Kuwait Projects Co.(Holding)	KPRO.KW	15.0	1.74	4.07%	0.77	0.223	(0.006)	446.0	0.235	0.031	7.2%	3,334,112	744,462	7.5%	11.6%
▼ Coast Invest. & Development Co.	COAS.KW	15.6	0.37	0.00%	1.87	0.033	(0.001)	20.4	0.045	0.028	(1.5%)	728,849	23,503	14.4%	2.4%
▼ The Securities House Co.	SECH.KW	NM	0.49	0.00%	1.27	0.044	(0.000)	19.9	0.062	0.046	(16.6%)	342,615	15,044	48.8%	0.4%
▼ Arzan Financial Group For Fin. & Invest.	ARZA.KW	3.7	0.21	0.00%	1.13	0.025	(0.001)	20.3	0.038	0.025	(15.1%)	7,775,027	198,640	123.8%	5.5%
▼ Kuwait Financial Centre	MARKZ.KW	10.2	0.49	5.26%	0.66	0.095	(0.003)	45.7	0.110	0.032	(5.0%)	860,992	82,543	15.9%	4.8%
▼ Kuwait & M.E. Financial Inv. Co.	KMEF.KW	NM	1.60	0.00%	0.77	0.094	(0.001)	24.8	0.100	0.026	193.8%	1,052,833	100,794	39.3%	2.0%
▼ Al-Aman Investment Co.	AMAN.KW	8.5	0.49	0.00%	0.79	0.056	(0.001)	8.4	0.081	0.033	14.6%	233,455	12,899	85.0%	5.8%
▼ First Investment Co.	OLAK.KW	NM	0.24	0.00%	0.95	0.033	(0.001)	21.5	0.045	0.012	(16.7%)	4,242,766	140,442	116.1%	NM
▼ Al-Mal Investment Co.	MALK.KW	NM	0.51	0.00%	1.63	0.013	(0.000)	4.1	0.025	0.017	(31.4%)	51,000	668	31.1%	NM
▲ Gulf Investment House	GIHK.KW	1.5	0.56	0.00%	1.06	0.050	0.003	20.3	0.083	0.014	180.9%	100	5	10.1%	36.8%
▼ A'ayan Leasing & Investment Co.	AAYA.KW	NM	0.54	0.00%	1.41	0.052	(0.001)	42.5	0.061	0.031	39.9%	6,457,629	338,477	228.8%	0.1%
= Bayan Investment Co.	BAYK.KW	NM	0.46	0.00%	1.56	0.042	0.000	16.4	0.051	0.034	(13.5%)	26,625	1,009	4.5%	NM
▼ Osoul Investment Co.	OSUL.KW	8.1	0.60	7.92%	0.46	0.070	(0.001)	13.2	0.073	0.053	15.9%	401,000	28,078	3.4%	7.4%
▼ Kuwait Finance & Investment Co.	KFSK.KW	NM	0.40	0.00%	0.47	0.048	(0.001)	15.5	0.051	0.033	41.2%	3,239,191	156,213	45.7%	0.4%
= KAMCO Investment Co.	KAMC.KW	7.3	0.69	0.00%	0.14	0.090	0.000	23.7	0.106	0.062	30.4%	0	0	2.1%	9.4%
▲ National International Holding Co.	NIHK.KW	6.1	0.34	7.33%	0.98	0.063	0.003	13.7	0.081	0.041	1.6%	13,110	826	8.1%	5.6%
▲ UniCap Investment and Finance	UNICAP.KW	NM	0.46	6.61%	0.67	0.045	0.003	10.8	0.085	0.058	(43.0%)	515,760	22,152	21.3%	NM
▼ Al Madar Finance & Investment Co.	MADR.KW	7.3	1.04	0.00%	0.45	0.105	(0.005)	22.5	0.180	0.010	(37.1%)	699,212	75,622	59.2%	14.2%
▼ Al-Deera Holding	DEER.KW	2.2	0.47	0.00%	1.51	0.012	(0.000)	2.4	0.026	0.016	(35.1%)	149,736	1,797	10.9%	20.9%
▼ Al Salam Group Holding Co.	SAGH.KW	NM	0.27	0.00%	1.58	0.031	(0.000)	8.5	0.043	0.013	(2.2%)	3,769,200	118,297	166.4%	NM
▲ Ekttab Holding Co.	EKTT.KW	NM	0.38	0.00%	1.26	0.017	0.000	5.4	0.025	0.019	(19.1%)	19,995	316	15.9%	NM
= Al Madina For Finance & Investment Co.	MADI.KW	NM	0.52	0.00%	1.25	0.017	0.000	6.9	0.027	0.020	(17.1%)	1,000	17	114.6%	NM
▲ NOOR Financial Investment Co.	NOOR.KW	1.5	0.65	5.97%	0.74	0.084	0.002	34.5	0.100	0.050	8.7%	239,132	19,755	51.2%	41.7%
= Tamdeen Investment Co.	TAMI.KW	11.7	0.46	3.68%	0.13	0.325	0.000	112.1	0.349	0.232	16.1%	8,967	2,894	0.8%	3.9%
= Kuwait Bahrain Int'l Exchange Co.	EXCH.KW	10.9	0.60	0.00%	NA	0.086	0.000	4.0	N/A	N/A	0.0%	0	0	0.0%	5.5%
▼ Kuwait Syrian Holding Co.	KSHC.KW	NM	0.31	9.09%	1.53	0.033	(0.002)	5.8	0.082	0.033	(17.5%)	1,562,692	50,933	53.5%	NM
▲ Asiya Capital Investment Co.	ASIYA.KW	NM	0.40	0.00%	0.85	0.035	0.001	28.0	0.039	0.030	2.9%	1,244,860	43,570	4.5%	0.3%
▼ Gulf North Africa Holding Co.	GNAH.KW	NM	0.77	0.00%	1.58	0.058	(0.001)	8.7	0.063	0.046	18.4%	2,000	116	26.4%	NM
= Amwah International Investment Co.	AMWA.KW	11.7	0.55	0.00%	0.63	0.055	0.000	9.9	0.087	0.056	(11.3%)	0	0	0.2%	4.7%
▼ Alimtiq Investment Group	ALIMK.KW	9.4	0.72	6.09%	0.84	0.126	(0.001)	142.8	0.147	0.123	(6.0%)	1,729,166	220,692	54.3%	7.6%
= Tamkeen Holding Co.	TAMKE.KW	NM	0.05	0.00%	NA	0.005	0.000	0.3	0.013	0.007	(47.5%)	0	0	12.2%	NM
= Manazel Holding Co.	MANK.KW	NM	0.74	0.00%	1.68	0.030	0.000	13.1	0.033	0.024	23.1%	0	0	17.8%	NM
▼ National Industries Group	NIND.KW	8.2	0.86	5.19%	1.34	0.220	(0.002)	314.1	0.261	0.151	46.2%	4,043,708	893,885	82.9%	10.4%
= Warba Capital Holding Co.	WARBACAP.KW	NM	1.53	0.00%	1.13	0.099	0.000	9.9	0.115	0.019	223.5%	0	0	19.2%	NM
= Arabi Holding Group Co.	AGHC.KW	59.4	0.54	0.00%	0.27	0.080	0.000	13.8	0.092	0.060	15.2%	182,993	14,433	5.8%	0.9%
▼ Privatization Holding Co.	KPPC.KW	NM	0.37	9.35%	1.25	0.054	(0.002)	32.6	0.065	0.013	1.9%	130,250	6,912	21.5%	NM
= Credit Rating & Collection Co.	TAHS.KW	NM	1.05	0.00%	0.02	0.035	0.000	5.8	0.037	0.019	57.0%	0	0	0.4%	NM
▲ Egypt Kuwait Holding Co.	EKHK.KW	17.6	3.04	4.40%	0.32	0.455	0.030	466.1	0.475	0.063	40.0%	1,000	455	0.2%	17.3%
▼ GFH Financial Group	GFH.KW	7.1	0.83	6.03%	1.11	0.071	(0.001)	262.1	0.102	0.060	(7.3%)	424,352	30,216	7.4%	11.7%
▲ Inovent	INOV.KW	7.6	0.46	7.58%	0.94	0.066	0.003	18.9	0.089	0.080	(17.5%)	300,100	18,338	8.1%	6.1%
= Al Bareeq Holding	BAREEQ.KW	48.0	1.15	0.00%	0.05	0.108	0.000	47.2	0.110	0.025	8.0%	0	0	0.0%	2.4%
= Amar For Finance and Leasing Co.	AMARF.KW	NM	0.48	0.00%	NA	0.041	0.000	8.2	0.066	0.033	0.0%	0	0	1.5%	NM
= Al-Manar Financing & Leasing Co.	ALMANAR.KW	21.6	0.37	0.00%	NA	0.040	0.000	12.3	0.075	0.000	(25.0%)	0	0	9.3%	1.7%
Financial Services		12.0	0.81	4.32%				2,673.1			27.5%	44,104,602	3,390,324		6.8%

Boursa Kuwait Daily Bulletin

Monday, September 16, 2019

Company	Reuters Ticker	Valuation Multiples				Price (KWD)		MKT Cap (KWD Mn.)	52 Weeks High (KWD)	52 Weeks Low (KWD)	YTD-19 Return #	Daily Trading Data		YTD-19 Capital Turnover	ROE
		Trailing P/E (X)	Trailing P/BV (X)	Dividend Yield	Beta	Closing	DTD Change					Volume (Shrs.)	Value (KWD)		
= Automated Systems Co.	ASCK.KW	NM	0.55	5.63%	0.00	0.071	0.000	7.1	0.132	0.066	(34.3%)	0	0	0.7%	NM
= Osos Holding Group Co.	OSOS.KW	6.7	0.77	9.90%	0.42	0.101	0.000	10.1	0.118	0.085	(1.0%)	0	0	12.4%	11.6%
= Hayat Communications Co.	HAYK.KW	13.3	0.55	0.00%	1.64	0.060	0.000	5.6	0.100	0.025	(11.8%)	0	0	1.3%	4.2%
Technology		12.9	0.63	6.15%				22.7			(16.6%)	0	0		4.9%

Boursa Kuwait	15.3	1.37	3.71%				32,604.7				12.4%	159,888,713	42,975,364		8.9%
----------------------	-------------	-------------	--------------	--	--	--	-----------------	--	--	--	--------------	--------------------	-------------------	--	-------------

Year-to-Date 2019 Top Movers & Most Active Stocks

YTD Top % Gainers	Close (KWD)	Percent Change
Warba Capital Holding Co.	0.099	223.5%
Kuwait & M.E. Financial Inv. Co.	0.094	193.8%
Gulf Investment House	0.050	180.9%
Int'l Financial Advisors Co.	0.053	88.3%
National Investment Co.	0.130	57.6%

YTD Top % Losers	Close (KWD)	Percent Change
Integrated holding Co.	0.386	(54.0%)
IFA Hotels & Resorts Co.	0.048	(46.2%)
Real Estate Asset Management Co.	0.095	(44.4%)
UniCap Investment and Finance	0.045	(43.0%)
Kuwait Remal Real Estate Co.	0.024	(42.6%)

YTD Most Active by Volume	Close (KWD)	Volume (Shrs.)
Ahli United Bank - Bahrain	0.269	2,336,794,119
Gulf Bank	0.285	1,979,557,678
A'ayan Leasing & Investment Co.	0.052	1,862,628,960
Kuwait Finance House	0.666	1,260,489,169
National Industries Group	0.220	1,183,504,179

YTD Most Active by Value	Close (KWD)	Value (KWD)
Kuwait Finance House	0.666	872,241,908
National Bank of Kuwait	0.934	787,096,755
Ahli United Bank - Bahrain	0.269	602,960,561
Gulf Bank	0.285	582,653,697
Zain	0.527	384,268,538

* Different Fiscal Year Company