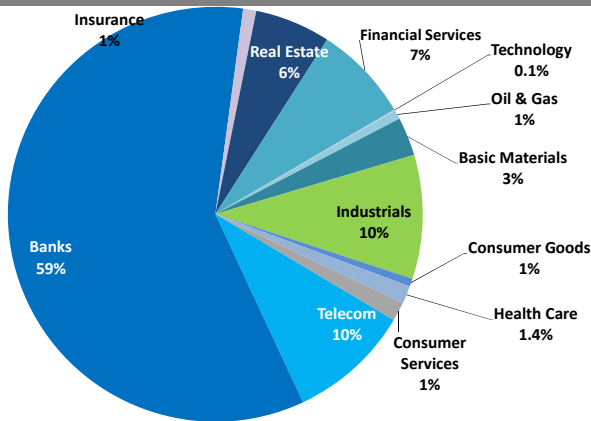


## Boursa Kuwait Daily Report

June 12, 2019

### Sector Weight by Market Cap



### Market Capitalization - Sector Returns

	Market Cap. (KWD Mn)	DTD % Chg	MTD % Chg	YTD % Chg
<b>Boursa Kuwait</b>	<b>34,013.3</b>	<b>(0.4%)</b>	<b>2.8%</b>	<b>17.2%</b>
Oil & Gas	242.5	0.9%	2.9%	6.5%
Basic Materials	1,018.4	(1.7%)	(1.9%)	(1.3%)
Industrials	3,284.3	0.4%	4.0%	(3.5%)
Consumer Goods	213.6	(2.2%)	(0.9%)	4.6%
Health Care	467.1	0.0%	0.0%	(0.5%)
Consumer Services	504.4	0.0%	1.9%	(1.4%)
Telecommunications	3,243.3	(0.6%)	7.6%	19.4%
Banks	20,105.0	(0.5%)	2.7%	24.9%
Insurance	347.3	0.0%	0.8%	(3.6%)
Real Estate	1,998.7	(0.3%)	1.1%	7.3%
Financial Services	2,560.5	(0.4%)	1.3%	22.1%
Technology	28.3	14.8%	15.7%	3.8%

### Top 10 Companies by Market Capitalization

Company Name	Market Cap. (Mn KWD)	P/E (X)	ROE* (%)
1- National Bank of Kuwait	6,458.7	16.8	12.5%
2- Kuwait Finance House	4,848.7	20.6	12.9%
3- Zain	2,475.1	12.2	17.3%
4- Ahli United Bank - Bahrain	2,290.1	10.5	19.3%
5- Boubyan Bank	1,701.6	29.3	14.3%
6- Agility (PWC Logistics)	1,405.1	17.0	8.0%
7- Commercial Bank of Kuwait	1,015.9	18.6	7.7%
8- Gulf Bank	966.3	16.7	9.4%
9- Burgan Bank	900.4	11.1	11.2%
10- Mabane Co.	754.8	13.9	12.3%
<b>Total</b>	<b>22,817</b>	<b>15.97</b>	<b>12.8%</b>

\*: ROE is calculated based on TTM 1Q-2019 net profit & shareholders' equity as of 31-March-19

### Top Movers and Most Active Stocks

Today's Top % Gainers	Close (KWD)	Change (KWD)	Percent Change
United Projects Group	0.420	0.058	16.0%
The Energy House Co.	0.027	0.002	9.8%
Asiya Capital Investment Co.	0.037	0.003	8.3%
Sharjah Cement Co.	0.070	0.005	7.7%
Al Rai Media Group Co.	0.041	0.003	7.3%

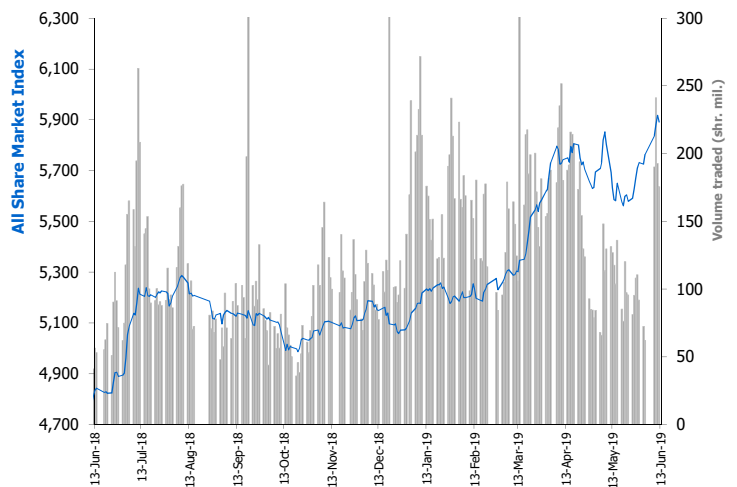
Today's Top % Losers	Close (KWD)	Change (KWD)	Percent Change
Arabi Holding Group Co.	0.077	(0.009)	(10.0%)
Tamdeen Real Estate Co.	0.316	(0.035)	(10.0%)
Automated Systems Co.	0.087	(0.010)	(10.0%)
Ektitab Holding Co.	0.017	(0.001)	(6.1%)
Tamdeen Investment Co.	0.285	(0.015)	(5.0%)

Today's Most Active by Volume	Close (KWD)	Percent Change	Volume (Shares)
Al Madina For Finance & Investment Co.	0.022	5.9%	19,662,255
A'ayan Leasing & Investment Co.	0.046	3.6%	16,425,842
Abyaar Real Estate Development Co.	0.015	2.0%	12,545,178
ALAFCO Aviation Lease & Finance Co.	0.230	1.8%	12,444,430
Ahli United Bank - Bahrain	0.261	(0.4%)	9,107,225

Source: Boursa Kuwait, KAMCO Research

Market Breadth	55	47	73
Benchmark Return	Closing Value	DTD Chg	MTD % Chg
Premier Market Index	6,455.50	(41.00)	(0.6%)
Main Market Index	4,788.06	6.84	0.1%
All Share Market Index	5,891.94	(25.43)	(0.4%)
Market Cap (KWD Mn)	34,013.28	(139.91)	(0.4%)

### Index Performance relative to Volume



### Market Trading Data and Volatility

Trading Indicators	Today's Value	DTD Chg	DTD % Chg	Average Daily YTD 2019	Average Daily YTD 2018
Volume (Shrs Mn)	175.4	(17.2)	(9.0%)	155.6	72.9
Value Traded (KWD Mn)	35.0	(10.1)	(22.3%)	31.4	11.5
No. of Trades	7,454	(361)	(4.6%)	5,737	3,054

Today's Most Active by Value	Close (KWD)	Percent Change	Value (KWD)
National Bank of Kuwait	0.990	(0.9%)	5,404,862
Zain	0.572	(0.7%)	5,087,552
Kuwait Finance House	0.695	(0.3%)	4,015,408
ALAFCO Aviation Lease & Finance Co.	0.230	1.8%	2,867,250
Agility (PWC Logistics)	0.797	(0.3%)	2,406,841

## Boursa Kuwait - Premier Market

Wednesday, June 12, 2019

Premier Market Stocks	Closing Price			Market Capitalization			Valuation Multiples				ROE	YTD-19 Price Return	YTD-19 Trading Indicators	
	KWD	DTD Chg. (KWD)	D-T-D Return	KWD Mn	Weight in Premier Index	Weight in Boursa Kuwait	P/E (X)	P/BV (X)	Yield	Beta			Volume (Mn Shrs)	Value (KWD Mn)
▼ National Bank of Kuwait	0.990	(0.009)	(0.9%)	6,459	25.8%	19.0%	16.8	2.10	3.3%	1.34	12.5%	24.6%	582.33	532.89
▼ Gulf Bank	0.317	(0.003)	(0.9%)	966	3.9%	2.8%	16.7	1.57	3.0%	0.93	9.4%	25.8%	1,499.76	434.93
▼ Kuwait International Bank	0.288	(0.001)	(0.3%)	311	1.2%	0.9%	16.0	1.15	3.3%	0.97	7.2%	13.5%	426.70	124.62
▲ Burgan Bank	0.343	0.002	0.6%	900	3.6%	2.6%	11.1	1.23	3.3%	1.00	11.2%	29.6%	306.64	99.81
▼ Kuwait Finance House	0.695	(0.002)	(0.3%)	4,849	19.4%	14.3%	20.6	2.66	2.6%	1.58	12.9%	25.1%	729.64	478.26
▼ Boubyan Bank	0.590	(0.006)	(1.0%)	1,702	6.8%	5.0%	29.3	4.19	1.1%	0.92	14.3%	27.2%	123.77	70.75
▲ Kuwait Projects Co. (Holding)	0.216	0.001	0.5%	334	1.3%	1.0%	11.5	1.22	5.4%	0.77	10.7%	3.8%	67.16	14.09
▲ Mabanee Co.	0.724	0.004	0.6%	755	3.0%	2.2%	13.9	1.72	1.6%	1.03	12.3%	26.6%	80.34	51.92
▼ National Industries Group (Holding)	0.227	(0.003)	(1.3%)	324	1.3%	1.0%	11.4	0.85	5.0%	1.33	7.4%	50.9%	645.32	132.08
▼ Boubyan Petrochemical Co.	0.900	(0.034)	(3.6%)	481	1.9%	1.4%	45.6	1.66	5.4%	0.75	3.6%	(7.7%)	28.69	27.01
▼ Qurain Petrochemicals Industries Co.	0.373	(0.002)	(0.5%)	410	1.6%	1.2%	9.0	1.06	4.1%	0.68	11.7%	3.6%	49.42	18.84
▼ Agility Public Warehousing Co.	0.797	(0.002)	(0.3%)	1,405	5.6%	4.1%	17.0	1.36	1.5%	1.50	8.0%	14.3%	147.98	117.76
▼ Mobile Telecommunications Co.	0.572	(0.004)	(0.7%)	2,475	9.9%	7.3%	12.2	2.11	5.2%	1.65	17.3%	27.4%	428.38	207.29
▼ Human Soft Holding Co.	3.361	(0.039)	(1.1%)	411	1.6%	1.2%	12.7	5.42	5.5%	0.41	42.7%	2.5%	15.19	49.06
▼ GFH Financial Group (B.S.C)	0.071	(0.001)	(1.8%)	263	1.1%	0.8%	6.7	0.83	6.0%	1.16	12.4%	(7.0%)	174.64	13.40
▼ Ahli United Bank (B.S.C)	0.261	(0.001)	(0.4%)	2,290	9.2%	6.7%	10.5	2.03	4.4%	0.77	19.3%	42.1%	1,501.19	370.90
▼ Warba Bank	0.250	(0.002)	(0.8%)	375	1.5%	1.1%	27.5	1.87	0.0%	0.90	6.8%	19.0%	388.53	91.02
▼ Mezzan Holding Co.	0.530	(0.010)	(1.9%)	165	0.7%	0.5%	21.3	1.49	3.0%	0.57	7.0%	6.0%	30.84	14.32
▲ Integrated Holding Co.	0.616	0.001	0.2%	136	0.5%	0.4%	8.9	1.95	6.5%	0.22	22.0%	(26.7%)	28.36	20.57
<b>Subtotal- Premier Market Stocks</b>	<b>5,891.94</b>	<b>(25.43)</b>	<b>-0.43%</b>	<b>25,010</b>	<b>100%</b>	<b>74%</b>	<b>15.5</b>	<b>1.95</b>	<b>3.29%</b>		<b>12.6%</b>	<b>16.0%</b>	<b>7,254.87</b>	<b>2,869.53</b>
<b>Remaining of the Market</b>				<b>9,003</b>		<b>26%</b>	<b>17.6</b>	<b>0.85</b>	<b>4.30%</b>		<b>4.8%</b>		<b>9,707.89</b>	<b>551.50</b>

**Boursa Kuwait Daily Bulletin**

Wednesday, June 12, 2019

Company	Reuters Ticker	Valuation Multiples				Price (KWD)		MKT Cap (KWD Mn.)	52 Weeks High (KWD)	52 Weeks Low (KWD)	YTD-19 Return #	Daily Trading Data		YTD-19	
		Trailing P/E (X)	Trailing P/BV (X)	Dividend Yield	Beta	Closing	DTD Change					Volume (Shrs.)	Value (KWD)	Capital Turnover	ROE
▲ Senergy Holding Co.	SENE.KW	NM	0.34	0.00%	1.40	0.025	0.001	4.9	0.037	0.021	(20.5%)	16,000	385	3.6%	NM
= Independent Petroleum Group	IPGK.KW	12.4	0.85	5.54%	0.31	0.416	0.000	78.4	0.450	0.379	3.7%	0	0	2.3%	6.9%
= National Petroleum Services Co.	NAPS.KW	8.7	3.28	6.53%	0.19	1.040	0.000	104.0	1.170	0.731	13.0%	0	0	0.6%	37.5%
▲ The Energy House Co.	ENER.KW	NM	0.76	0.00%	0.90	0.027	0.002	20.1	0.051	0.023	(26.2%)	261,000	6,260	2.3%	NM
▲ Gulf Petroleum Investment	GPIK.KW	NM	0.26	0.00%	1.23	0.024	0.000	11.1	0.033	0.021	(17.3%)	1,185,488	28,704	112.0%	NM
= Burgan Co. for Drilling, Tdg. & Maint. *	ABAR.KW	7.7	0.38	0.00%	NA	0.099	0.000	24.0	0.123	0.080	4.2%	0	0	0.4%	4.9%
<b>Oil &amp; Gas</b>		<b>15.3</b>	<b>0.89</b>	<b>4.59%</b>				<b>242.5</b>			<b>6.5%</b>	<b>1,462,488</b>	<b>35,349</b>		<b>5.8%</b>
▲ Kuwait Foundry Co.	KFDC.KW	35.4	0.94	2.91%	0.43	0.275	0.017	42.3	0.289	0.175	44.0%	173,400	46,724	12.9%	2.7%
▼ Boubyan Petrochemicals Co.*	BPCC.KW	45.6	1.66	5.40%	0.75	0.900	(0.034)	481.3	1.090	0.780	(7.7%)	626,875	563,555	5.4%	3.6%
= Al Kout for Industrial Projects Co.	ALKK.KW	13.5	2.72	5.95%	0.05	0.840	0.000	84.8	0.840	0.362	0.0%	0	0	0.0%	20.2%
▼ Qurain Petrochemical Industries Co. *	ALQK.KW	9.0	1.06	4.06%	0.68	0.373	(0.002)	410.0	0.415	0.321	3.6%	466,293	174,104	4.5%	11.7%
<b>Basic Materials</b>		<b>16.1</b>	<b>1.35</b>	<b>4.80%</b>				<b>1,018.4</b>			<b>(1.3%)</b>	<b>1,266,568</b>	<b>784,382</b>		<b>8.4%</b>
= Specialities Group Holding Co.	SPEC.KW	6.8	0.37	0.00%	0.35	0.069	0.000	10.3	0.082	0.057	0.4%	151,900	10,203	14.6%	5.4%
= Kuwait Cement Co.	KCEM.KW	33.2	1.06	5.03%	0.46	0.290	0.000	212.7	0.422	0.327	(23.5%)	0	0	0.3%	3.2%
▲ Gulf Cable & Electrical Ind. Co.	CABL.KW	7.8	0.52	6.67%	1.03	0.405	0.003	85.0	0.420	0.346	15.4%	535,078	214,166	9.2%	6.7%
= Heavy Eng'g Ind. & Shipbuilding Co.	SHIP.KW	6.6	1.17	7.83%	0.48	0.383	0.000	69.0	0.538	0.307	(11.3%)	324,449	123,728	18.7%	17.7%
▼ Kuwait Portland Cement Co.	PCEM.KW	11.5	1.61	8.33%	0.50	1.200	(0.018)	120.3	1.459	0.149	5.4%	116,556	140,292	6.6%	14.0%
= Shuaiba Industrial Co.	PAPE.KW	20.6	0.89	5.97%	0.17	0.165	0.000	16.6	0.249	0.012	(12.2%)	0	0	0.2%	4.3%
= Metal & Recycling Co.	MRCK.KW	NM	0.56	0.00%	0.02	0.070	0.000	7.0	0.089	0.012	11.1%	0	0	0.1%	NM
▼ ACICO Industries Co.	ACIC.KW	45.6	0.43	3.66%	0.43	0.136	(0.002)	43.2	0.245	0.150	(18.6%)	130,861	17,559	3.9%	0.9%
= Hilal Cement Co.	HCKK.KW	17.3	0.84	0.00%	0.13	0.122	0.000	12.4	0.146	0.067	8.9%	0	0	0.7%	4.9%
▲ National Industries Co.	NIBM.KW	15.2	0.83	5.12%	0.18	0.188	0.004	67.7	0.202	0.160	(6.0%)	4,008	747	0.5%	5.5%
▼ Equipment Holding Co.	EQUI.KW	NM	0.49	0.00%	1.36	0.022	(0.000)	3.0	0.034	0.025	(17.8%)	20,498	468	20.3%	NM
▲ National Co. for Consumer Industries	NCCI.KW	50.1	0.61	0.00%	NA	0.055	0.025	5.0	0.084	0.035	25.0%	1	0	0.4%	1.2%
= Salbookh Trading Co.	SALB.KW	NM	0.53	0.00%	0.75	0.045	0.000	4.7	0.052	0.036	12.5%	80,218	3,451	30.6%	NM
▼ Agility (PWC Logistics)	AGLT.KW	17.0	1.36	1.54%	1.50	0.797	(0.002)	1,405.1	0.943	0.315	14.3%	3,017,965	2,406,841	8.4%	8.0%
= Educational Holding Group*	EDUK.KW	12.0	1.94	4.69%	0.17	0.320	0.000	78.5	0.340	0.056	3.2%	0	0	0.5%	16.2%
▲ National Cleaning Co.	CLEA.KW	10.9	0.46	7.14%	0.94	0.068	0.002	17.0	0.072	0.048	18.5%	5,123	322	5.2%	4.3%
▲ Kuwait & Gulf Link Transport Co.	KGLK.KW	8.9	0.35	5.79%	0.93	0.082	0.002	22.8	0.128	0.090	(14.2%)	95,831	7,775	13.2%	3.9%
▼ Kuwait Co. For Process Plant Const. & Cont.	KPCP.KW	5.2	0.84	9.21%	0.35	0.210	(0.007)	21.1	0.260	0.159	(8.7%)	9,800	2,058	1.8%	16.1%
▼ Humansoft Holding Co.	HUMN.KW	12.7	5.42	5.48%	0.41	3.361	(0.039)	410.8	3.800	2.996	2.5%	42,583	143,688	12.4%	42.7%
= Gulf Franchising Co.	GFCI.KW	NM	0.60	0.00%	NA	0.051	0.000	2.0	0.250	0.011	(27.1%)	0	0	0.0%	NM
▲ National Shooting Co.	SHOOTING.KW	NM	0.18	0.00%	1.77	0.013	0.000	3.6	0.021	0.015	(19.4%)	342,632	4,310	12.5%	NM
▼ Combined Group Contracting Co.	CGCK.KW	5.9	0.65	10.28%	NA	0.194	(0.001)	31.7	0.430	0.295	(39.4%)	162,525	31,352	7.6%	11.0%
▲ United Projects Group	UPAC.KW	7.3	0.96	3.86%	0.02	0.420	0.058	69.1	0.690	0.217	(33.9%)	321	128	0.4%	13.2%
▲ ALAFCO Aviation Lease & Finance Co.*	ALAF.KW	12.8	0.70	4.35%	0.37	0.230	0.004	219.0	0.372	0.054	(34.1%)	12,444,430	2,867,250	5.0%	5.4%
▼ Mubarrad Holding Co.	MBRD.KW	6.0	0.47	8.33%	0.86	0.059	(0.000)	9.7	0.080	0.040	(9.2%)	152,000	8,968	32.5%	8.0%
▲ KGL Logistics Co.	LOGK.KW	5.6	0.31	0.00%	0.81	0.042	0.000	30.9	0.046	0.040	4.2%	1,126,766	47,498	29.8%	5.6%
▲ Integrated holding Co.	INTEGRATED.KW	8.9	1.95	6.49%	0.22	0.616	0.001	135.5	0.970	0.720	(26.7%)	148,143	90,906	12.9%	22.0%
▲ Sharjah Cement Co.	SCEM.KW	28.6	0.37	11.43%	0.45	0.070	0.005	42.6	0.087	0.054	(19.4%)	120,001	7,801	0.2%	1.3%
▲ Gulf Cement Co.	GCEM.KW	NM	0.58	13.01%	0.44	0.062	0.000	50.5	0.084	0.058	(9.4%)	5,050	286	0.5%	NM
▼ Umm Al-Qaiwain General Investments Co.	QIC.KW	16.0	0.45	9.72%	0.19	0.072	(0.001)	26.1	0.091	0.044	8.3%	3,100	204	0.5%	2.8%
▲ Fujairah Cement Industries Co.	FCEM.KW	32.1	0.22	11.11%	0.55	0.054	0.001	19.2	0.073	0.055	(15.0%)	4,500	243	6.0%	0.7%
▲ Ras-Al-Khaimah for White Cement Co.	RKWC.KW	27.3	0.52	7.75%	0.19	0.065	0.002	32.3	0.087	0.059	(13.9%)	2,399	155	0.3%	1.9%
<b>Industrials</b>		<b>14.4</b>	<b>1.06</b>	<b>4.08%</b>				<b>3,284.3</b>			<b>(3.5%)</b>	<b>19,046,738</b>	<b>6,130,400</b>		<b>7.3%</b>

**Boursa Kuwait Daily Bulletin**

Wednesday, June 12, 2019

Company	Reuters Ticker	Valuation Multiples				Price (KWD)		MKT Cap (KWD Mn.)	52 Weeks High (KWD)	52 Weeks Low (KWD)	YTD-19 Return #	Daily Trading Data		YTD-19	
		Trailing P/E (X)	Trailing P/BV (X)	Dividend Yield	Beta	Closing	DTD Change					Volume (Shrs.)	Value (KWD)	Capital Turnover	ROE
= Palms Agro Production Co.	PAPK.KW	NM	0.53	13.31%	<b>0.31</b>	<b>0.075</b>	0.000	<b>3.9</b>	0.080	0.037	25.0%	0	0	0.8%	NM
▼ Livestock Transport & Trading Co.	CATT.KW	NM	1.04	2.53%	<b>0.39</b>	<b>0.191</b>	(0.008)	<b>41.4</b>	0.259	0.026	1.6%	101	19	1.2%	NM
▲ Danah Alsafat Foodstuff Co.	DANK.KW	NM	0.30	0.00%	<b>0.53</b>	<b>0.027</b>	0.000	<b>3.3</b>	0.053	0.036	(28.9%)	1,891,905	51,123	18.2%	NM
▼ Mezzan Holding Co.	MEZZ.KW	21.3	1.49	2.96%	<b>0.57</b>	<b>0.530</b>	(0.010)	<b>165.0</b>	0.771	0.431	6.0%	105,482	55,905	9.9%	7.0%
<b>Consumer Goods</b>		<b>53.8</b>	<b>1.26</b>	<b>3.02%</b>				<b>213.6</b>			<b>4.6%</b>	<b>1,997,488</b>	<b>107,048</b>		<b>2.4%</b>
= Advanced Technology Co.	ATCK.KW	28.5	2.52	1.50%	NA	<b>1.000</b>	0.000	<b>150.0</b>	1.000	0.067	0.0%	0	0	0.0%	8.8%
= Yiacco Medical Co.	YIAC.KW	NM	13.64	0.00%	<b>0.61</b>	<b>0.067</b>	0.000	<b>12.1</b>	0.139	0.080	(37.9%)	0	0	0.0%	NM
= Al-Maidan Clinic For Oral Health Services Co.	MIDAN.KW	53.0	8.69	0.41%	<b>0.01</b>	<b>1.220</b>	0.000	<b>305.0</b>	1.260	1.080	1.7%	0	0	0.1%	16.4%
<b>Health Care</b>		<b>NM</b>	<b>4.90</b>	<b>0.75%</b>				<b>467.1</b>			<b>(0.5%)</b>	<b>0</b>	<b>0</b>		<b>3.2%</b>
= Kuwait National Cinema Co.	KCIN.KW	11.8	1.18	5.18%	<b>0.16</b>	<b>0.890</b>	0.000	<b>89.9</b>	1.090	0.830	(16.7%)	0	0	0.1%	10.0%
= Kuwait Hotels Co.	KHOT.KW	NM	1.15	0.00%	NA	<b>0.100</b>	0.000	<b>5.8</b>	0.130	0.046	(23.1%)	0	0	0.0%	NM
▲ Sultan Center Food Products Co.	SCFK.KW	12.9	0.66	0.00%	<b>0.69</b>	<b>0.050</b>	0.000	<b>28.8</b>	0.076	0.013	(5.7%)	400,858	19,793	9.9%	5.1%
= Kuwait Cable Vision Co.	KWTV.KW	NM	0.75	0.00%	<b>0.33</b>	<b>0.020</b>	0.000	<b>0.7</b>	0.033	0.008	0.5%	0	0	1.9%	NM
= IFA Hotels & Resorts Co.*	IFAH.KW	NM	1.12	0.00%	<b>0.14</b>	<b>0.065</b>	0.000	<b>41.1</b>	0.110	0.054	(27.3%)	0	0	0.3%	NM
▼ Oula Fuel Marketing Co.	OULA.KW	12.7	0.71	4.10%	<b>0.45</b>	<b>0.120</b>	(0.001)	<b>48.5</b>	0.136	0.052	1.7%	10,359	1,243	2.5%	5.6%
▲ Kuwait Resorts Co.	MUNK.KW	8.0	0.38	9.38%	<b>0.71</b>	<b>0.053</b>	0.001	<b>10.5</b>	0.067	0.052	(5.3%)	21	1	37.4%	4.8%
= Jazeera Airways Co.	JAZK.KW	22.0	5.55	3.76%	<b>0.28</b>	<b>0.930</b>	0.000	<b>186.0</b>	0.935	0.114	27.4%	145,803	135,444	6.3%	25.2%
= Soor Fuel Marketing Co.	SOOR.KW	14.3	0.73	4.16%	<b>0.39</b>	<b>0.119</b>	0.000	<b>48.2</b>	0.139	0.110	3.5%	26,857	3,202	2.7%	5.1%
= Future Kid Entertainment and R.E Co.	KIDK.KW	10.8	0.51	13.13%	NA	<b>0.090</b>	0.000	<b>10.5</b>	0.135	0.088	(5.2%)	0	0	2.6%	4.7%
▲ Al Rai Media Group Co.	ALRA.KW	NM	0.69	NM	<b>0.57</b>	<b>0.041</b>	0.003	<b>9.6</b>	0.109	0.047	(32.8%)	50	2	3.5%	NM
▼ Jiyad Holding Co	JIYAD.KW	15.1	0.49	0.00%	<b>0.70</b>	<b>0.054</b>	(0.001)	<b>18.7</b>	0.103	0.064	(25.2%)	89,150	4,755	37.1%	3.2%
= Al Eid Food Co.	ALEID.KW	4.2	0.36	0.00%	<b>0.02</b>	<b>0.060</b>	0.000	<b>6.0</b>	0.077	0.052	(9.1%)	8,000	480	1.1%	8.5%
<b>Consumer Services</b>		<b>NM</b>	<b>1.13</b>	<b>4.68%</b>				<b>504.4</b>			<b>(1.4%)</b>	<b>681,098</b>	<b>164,920</b>		<b>NM</b>
▼ Zain	ZAIN.KW	12.2	2.11	5.24%	<b>1.65</b>	<b>0.572</b>	(0.004)	<b>2,475.1</b>	0.579	0.393	27.4%	8,884,898	5,087,552	9.9%	17.3%
▼ National Mobile Telecom Co.	OORE.KW	11.6	0.63	7.37%	<b>0.50</b>	<b>0.675</b>	(0.010)	<b>340.2</b>	0.889	0.010	(5.5%)	18,955	12,728	0.6%	5.5%
▼ AAN digital services Co.	AAN.KW	NM	0.37	0.00%	<b>1.64</b>	<b>0.012</b>	(0.000)	<b>10.5</b>	0.022	0.016	(31.0%)	4,009,992	49,090	17.2%	NM
▲ Kuwait Telecommunication Co.	VIVA.KW	8.6	2.30	4.78%	<b>0.74</b>	<b>0.836</b>	0.006	<b>417.5</b>	0.899	0.690	4.5%	28,856	24,093	0.9%	26.7%
<b>Telecommunications</b>		<b>11.6</b>	<b>1.69</b>	<b>5.39%</b>				<b>3,243.3</b>			<b>19.4%</b>	<b>12,942,701</b>	<b>5,173,463</b>		<b>14.6%</b>
▼ National Bank of Kuwait	NBKK.KW	16.8	2.10	3.32%	<b>1.34</b>	<b>0.990</b>	(0.009)	<b>6,458.7</b>	1.000	0.270	24.6%	5,428,790	5,404,862	8.9%	12.5%
▼ Gulf Bank	GBKK.KW	16.7	1.57	3.00%	<b>0.93</b>	<b>0.317</b>	(0.003)	<b>966.3</b>	0.330	0.233	25.8%	5,128,896	1,634,429	49.2%	9.4%
▲ Commercial Bank of Kuwait	CBKK.KW	18.6	1.42	3.54%	<b>0.70</b>	<b>0.510</b>	0.002	<b>1,015.9</b>	0.700	0.299	12.2%	966	493	0.7%	7.7%
▲ Ahli Bank of Kuwait	ABKK.KW	11.6	0.90	4.34%	<b>0.61</b>	<b>0.320</b>	0.003	<b>518.1</b>	0.350	0.284	8.5%	206,100	65,989	1.0%	7.7%
▼ Ahli United Bank - Kuwait	BKME.KW	12.5	1.55	4.07%	<b>0.76</b>	<b>0.316</b>	(0.001)	<b>651.8</b>	0.369	0.248	11.7%	685,184	216,047	3.8%	12.3%
▼ Kuwait International Bank	KIBK.KW	16.0	1.15	3.31%	<b>0.97</b>	<b>0.288</b>	(0.001)	<b>310.7</b>	0.343	0.217	13.5%	2,613,463	753,103	39.6%	7.2%
▲ Burgan Bank	BURG.KW	11.1	1.23	3.32%	<b>1.00</b>	<b>0.343</b>	0.002	<b>900.4</b>	0.405	0.246	29.6%	4,749,081	1,621,782	11.7%	11.2%
▼ Kuwait Finance House	KFH.KW	20.6	2.66	2.59%	<b>1.58</b>	<b>0.695</b>	(0.002)	<b>4,848.7</b>	0.718	0.517	25.1%	5,777,860	4,015,408	10.5%	12.9%
▼ Boubyan Bank	BOUK.KW	29.3	4.19	1.12%	<b>0.92</b>	<b>0.590</b>	(0.006)	<b>1,701.6</b>	0.630	0.215	27.2%	544,095	322,427	4.3%	14.3%
▼ Warba Bank	WARB.KW	27.5	1.87	0.00%	<b>0.90</b>	<b>0.250</b>	(0.002)	<b>375.0</b>	0.265	0.205	19.0%	4,175,696	1,045,964	25.9%	6.8%
▼ Ahli United Bank - Bahrain	AUBK.KW	10.5	2.03	4.45%	<b>0.77</b>	<b>0.261</b>	(0.001)	<b>2,290.1</b>	0.277	0.019	42.1%	9,107,225	2,374,794	17.1%	19.3%
= Ithmaar Bank	ITHMR.KW	NM	1.84	0.00%	<b>1.50</b>	<b>0.022</b>	0.000	<b>67.6</b>	0.038	0.024	(10.8%)	0	0	4.9%	NM
<b>Banks</b>		<b>16.6</b>	<b>2.01</b>	<b>3.06%</b>				<b>20,105.0</b>			<b>24.9%</b>	<b>38,417,356</b>	<b>17,455,297</b>		<b>12.1%</b>



**Boursa Kuwait Daily Bulletin**

Wednesday, June 12, 2019

Company	Reuters Ticker	Valuation Multiples				Price (KWD)		MKT Cap (KWD Mn.)	52 Weeks High (KWD)	52 Weeks Low (KWD)	YTD-19 Return #	Daily Trading Data		YTD-19	
		Trailing P/E (X)	Trailing P/BV (X)	Dividend Yield	Beta	Closing	DTD Change					Volume (Shrs.)	Value (KWD)	Capital Turnover	ROE
= Kuwait Insurance Co.	KINS.KW	7.1	0.80	6.61%	0.03	0.360	0.000	69.9	0.427	0.275	0.0%	0	0	1.5%	11.3%
= Gulf Insurance Group	GINS.KW	9.4	1.37	5.56%	0.05	0.620	0.000	116.0	0.730	0.401	(5.3%)	0	0	0.1%	14.6%
= Ahleiah Insurance Co.	AINS.KW	8.7	0.86	8.09%	0.20	0.425	0.000	85.0	0.450	0.056	(0.5%)	0	0	1.5%	9.8%
= Warba Insurance Co.	WINS.KW	11.2	0.31	0.00%	0.59	0.070	0.000	12.1	0.092	0.056	6.1%	977	66	1.3%	2.8%
= Kuwait Reinsurance Co.	KWRE.KW	6.9	0.54	3.23%	NA	0.145	0.000	27.4	0.198	0.037	(21.2%)	0	0	0.3%	7.9%
= First Takaful Insurance Co.	FTIK.KW	6.6	0.50	0.00%	0.11	0.044	0.000	4.6	0.053	0.027	(1.4%)	0	0	1.4%	7.6%
= Wethaq Takaful Insurance Co.	WETH.KW	54.4	0.32	0.00%	0.72	0.034	0.000	3.7	0.045	0.024	21.5%	0	0	14.9%	0.6%
= Bahrain Kuwait Insurance Co.	BKIK.KW	12.2	1.03	12.50%	0.04	0.200	0.000	28.6	0.200	0.200	0.0%	0	0	0.0%	8.4%
<b>Insurance</b>		<b>8.7</b>	<b>0.85</b>	<b>6.45%</b>				<b>347.3</b>			<b>(3.6%)</b>	<b>977</b>	<b>66</b>		<b>9.8%</b>
▲ Sokouk Holding Co.	SHCK.KW	NM	0.42	0.00%	1.44	0.034	0.001	20.2	0.052	0.038	(13.9%)	4,212,649	139,987	28.9%	NM
▲ Kuwait Real Estate Co.	KREK.KW	9.1	0.54	0.00%	1.35	0.078	0.000	74.0	0.079	0.044	50.6%	4,225,096	328,385	51.7%	5.9%
= United Real Estate Co.	UREK.KW	NM	0.37	0.00%	0.64	0.060	0.000	71.2	0.070	0.057	(0.2%)	0	0	0.3%	NM
= National Real Estate Co.	NREK.KW	10.1	0.40	0.00%	1.33	0.078	0.000	105.5	0.124	0.080	(14.8%)	1,014,586	78,267	6.9%	4.0%
= Salhia Real Estate Co.	SREK.KW	11.3	1.13	5.60%	0.31	0.344	0.000	176.4	0.350	0.324	4.2%	0	0	3.1%	10.1%
▼ Tamdeen Real Estate Co.	TAMK.KW	21.7	0.79	3.07%	0.26	0.316	(0.035)	136.5	0.400	0.126	(9.7%)	685	217	0.4%	3.7%
▲ Ajial Real Estate Entertainment Co.	AREC.KW	10.8	0.20	3.77%	0.38	0.132	0.002	24.4	0.159	0.032	(2.2%)	1,000	129	2.4%	1.8%
▲ Al Massaleh Real Estate Co.	MREC.KW	NM	0.37	0.00%	0.45	0.035	0.001	8.2	0.049	0.027	(4.9%)	5,000	169	3.4%	NM
▲ Arab Real Estate Co.	ARAB.KW	NM	0.28	0.00%	1.39	0.032	0.001	16.1	0.035	0.027	9.4%	62,110	1,884	12.8%	NM
▼ AL-Enma'a Real Estate Co.*	ENMA.KW	NM	0.37	0.00%	0.79	0.037	(0.001)	16.5	0.048	0.030	11.9%	44,011	1,602	36.5%	NM
▲ Mabaneer Co.	MABK.KW	13.9	1.72	1.56%	1.03	0.724	0.004	754.8	0.729	0.076	26.6%	476,184	339,713	7.7%	12.3%
= Injazat Real Estate Development Co.	INJA.KW	7.0	0.48	8.12%	0.51	0.084	0.000	29.0	0.090	0.009	(2.3%)	0	0	1.7%	6.9%
= Investors Holding Group Co.	INVK.KW	NM	0.27	0.00%	1.60	0.010	0.000	6.4	0.016	0.012	(15.6%)	4,637,710	47,839	95.1%	NM
▲ International Resorts Co.	IRCK.KW	6.4	0.37	0.00%	1.47	0.023	0.001	3.5	0.030	0.018	0.4%	10	0	1.2%	5.8%
▲ The Commercial Real Estate Co.	TIJK.KW	11.9	0.56	5.38%	0.80	0.094	0.001	164.8	0.098	0.030	2.2%	106,727	9,926	6.4%	4.7%
= Sanam Real Estate Co.	SANK.KW	NM	0.62	0.00%	0.47	0.050	0.000	6.0	0.063	0.026	42.7%	0	0	2.8%	NM
▼ A'ayan Real Estate Co.	AYRE.KW	3.8	0.34	8.41%	0.88	0.059	(0.000)	24.4	0.068	0.046	1.7%	70,320	4,084	10.9%	8.9%
= Aqar Real Estate Investment Co.	AQAR.KW	11.9	0.56	6.96%	NA	0.065	0.000	15.2	0.071	0.023	6.2%	0	0	0.4%	4.7%
= Kuwait Real Estate Holding Co.	ALAQ.KW	41.7	0.50	0.00%	1.06	0.029	0.000	5.4	0.035	0.020	14.0%	0	0	1.8%	1.2%
▼ MAZAYA Holding Co.	MAZA.KW	8.6	0.44	13.41%	1.39	0.060	(0.000)	41.0	0.094	0.070	(15.1%)	1,173,713	70,046	36.0%	5.2%
= Tijara Real Estate & Investment Co.	TIJA.KW	17.4	0.46	4.15%	0.69	0.048	0.000	17.8	0.057	0.025	(1.6%)	0	0	0.6%	2.6%
= Al TAMEER Real Estate Investment Co.	AMAR.KW	NM	0.43	0.00%	1.41	0.030	0.000	7.2	0.046	0.026	7.1%	1,429,767	42,799	109.6%	NM
= Arkan Al-Kuwait Real Estate Co. *	ARKK.KW	16.3	0.55	10.26%	0.35	0.078	0.000	19.6	0.091	0.072	(6.6%)	22,000	1,716	1.7%	3.4%
= Al-Argan International Real Estate Co.	ARGK.KW	NM	0.52	2.74%	0.40	0.176	0.000	46.6	0.176	0.012	29.4%	0	0	0.1%	0.6%
▲ Abyaar Real Estate Development Co.	ABYR.KW	NM	0.19	0.00%	1.57	0.015	0.000	16.6	0.020	0.015	(1.3%)	12,545,178	189,310	57.1%	NM
▲ Munshaat Real Estate Projects Co.	MUNS.KW	NM	0.62	0.00%	1.06	0.087	0.004	28.0	0.120	0.027	(13.0%)	30,051	2,614	3.3%	NM
▲ First Dubai For Real Estate Development	FIRST.KW	20.5	0.44	0.00%	1.57	0.033	0.001	32.5	0.047	0.035	(13.8%)	144,525	4,501	3.8%	2.1%
▼ Kuwait Business Town Real Estate Co.	KBTK.KW	8.6	0.37	7.33%	1.36	0.039	(0.001)	24.5	0.054	0.042	(9.4%)	178,992	6,978	4.4%	4.2%
= Real Estate Asset Management Co.	REAM.KW	35.7	1.10	2.91%	0.01	0.171	0.000	17.9	1.415	0.033	(5.0%)	0	0	0.0%	3.1%
▼ MENA Real Estate Co. *	MENK.KW	2.7	0.47	0.00%	0.94	0.037	(0.001)	5.1	0.050	0.017	4.5%	6,526,703	251,783	178.6%	17.6%
▲ Al Mudon International Real Estate Co.	ALMK.KW	NM	0.14	0.00%	1.37	0.019	0.000	1.9	0.032	0.020	(34.4%)	38,112	679	13.7%	NM
▼ Real Estate Trade Centers Co.	MARA.KW	NM	0.15	0.00%	0.46	0.025	(0.001)	3.4	0.037	0.018	14.1%	289,575	7,791	22.2%	0.0%
▲ Kuwait Remal Real Estate Co.	REMA.KW	NM	0.41	0.00%	1.00	0.031	0.001	9.5	0.050	0.029	(26.2%)	1,123,652	35,194	37.2%	NM
▲ Mashaer Holding Co.	MASHAER.KW	NM	0.61	0.00%	0.27	0.074	0.002	13.3	0.088	0.015	(11.2%)	262,515	19,133	131.4%	NM
= Effect Real Estate Co.	EFFECT.KW	NM	0.28	0.00%	0.82	0.020	0.000	1.6	0.025	0.009	119.8%	60	1	12.7%	NM
▼ Ajwan Gulf Real Estate Co.	AJWN.KW	NM	0.25	0.00%	0.46	0.014	(0.001)	2.9	0.025	0.017	(23.1%)	367,920	5,197	55.7%	NM
= Al Masaken Intl. Real Estate Dev. Co.	MASKN.KW	NM	0.83	0.00%	0.36	0.070	0.000	7.0	0.100	0.036	12.0%	0	0	0.2%	NM
= Dalqan Real Estate Co.	DALQ.KW	NM	2.76	0.00%	NA	0.350	0.000	17.5	0.350	0.179	0.0%	0	0	0.0%	2.2%
= Dar Al Thuraya Real Estate Co.	THURY.KW	26.1	1.74	0.00%	NA	0.179	0.000	26.2	0.220	0.220	(18.6%)	0	0	0.0%	6.7%
<b>Real Estate</b>		<b>29.9</b>	<b>0.70</b>	<b>2.65%</b>				<b>1,998.7</b>			<b>7.3%</b>	<b>38,988,851</b>	<b>1,589,944</b>		<b>2.3%</b>

**Boursa Kuwait Daily Bulletin**

Wednesday, June 12, 2019

Company	Reuters Ticker	Valuation Multiples				Price (KWD)		MKT Cap (KWD Mn.)	52 Weeks High (KWD)	52 Weeks Low (KWD)	YTD-19 Return #	Daily Trading Data		YTD-19	
		Trailing P/E (X)	Trailing P/BV (X)	Dividend Yield	Beta	Closing	DTD Change					Volume (Shrs.)	Value (KWD)	Capital Turnover	ROE
▼ Kuwait Investment Co.	KINV.KW	4.9	0.58	8.15%	0.61	0.122	(0.002)	67.3	0.139	0.109	(6.2%)	303,300	37,174	8.9%	11.7%
= Commercial Facilities Co.	FACI.KW	10.3	0.65	8.21%	0.58	0.196	0.000	105.2	0.211	0.021	12.0%	0	0	2.8%	6.3%
= Int'l Financial Advisors Co.	IFIN.KW	NM	0.70	0.00%	1.60	0.023	0.000	16.6	0.039	0.021	(18.1%)	0	0	24.4%	NM
= National Investment Co.	NINV.KW	11.1	0.57	5.31%	1.31	0.120	0.000	105.1	0.123	0.070	45.5%	1,019,297	121,941	17.5%	5.2%
▲ Kuwait Projects Co.(Holding)	KPRO.KW	11.5	1.22	5.44%	0.77	0.216	0.001	334.2	0.252	0.033	3.8%	226,350	48,474	4.3%	10.7%
▼ Coast Invest. & Development Co.	COAS.KW	15.1	0.42	0.00%	1.96	0.037	(0.001)	23.1	0.045	0.028	11.1%	168,812	6,148	9.4%	2.8%
▼ The Securities House Co.	SECH.KW	NM	0.52	0.00%	1.29	0.048	(0.001)	21.5	0.062	0.045	(9.8%)	1,743,289	84,180	40.4%	0.2%
= Arzan Financial Group For Fin. & Invest.	ARZA.KW	6.5	0.26	0.00%	1.14	0.033	0.000	26.1	0.038	0.025	9.1%	1,222,218	39,687	15.8%	3.9%
= Kuwait Financial Centre	MARKZ.KW	10.0	0.45	5.68%	0.65	0.088	0.000	42.3	0.110	0.032	(12.0%)	0	0	0.9%	4.4%
▼ Kuwait & M.E. Financial Inv. Co.	KMEF.KW	29.8	0.59	0.00%	0.72	0.035	(0.001)	9.1	0.054	0.019	7.8%	97,300	3,268	13.5%	2.0%
▲ Al-Aman Investment Co.	AMAN.KW	9.6	0.52	0.00%	0.79	0.059	0.001	8.8	0.081	0.034	20.1%	286,501	16,786	69.5%	5.4%
▼ First Investment Co.	OLAK.KW	12.5	0.27	0.00%	0.97	0.039	(0.001)	25.1	0.045	0.016	(2.5%)	2,001,873	77,154	81.3%	2.2%
▲ Al-Mal Investment Co.	MALK.KW	NM	0.60	0.00%	1.64	0.017	0.000	5.2	0.025	0.017	(11.5%)	1,025,610	16,845	18.4%	NM
▲ Gulf Investment House	GIHK.KW	1.8	0.67	0.00%	1.11	0.060	0.002	24.4	0.083	0.014	237.1%	1,372,758	81,755	9.1%	37.0%
▲ A'ayan Leasing & Investment Co.	AAYA.KW	NM	0.48	0.00%	1.38	0.046	0.002	37.5	0.056	0.029	23.6%	16,425,842	758,384	137.8%	NM
▲ Bayan Investment Co.	BAYK.KW	NM	0.46	0.00%	1.62	0.044	0.000	17.3	0.052	0.034	(8.9%)	100	4	3.0%	NM
= Osoul Investment Co.	OSUL.KW	7.9	0.52	9.24%	0.46	0.060	0.000	11.3	0.064	0.050	(0.7%)	0	0	1.9%	6.6%
▲ Kuwait Finance & Investment Co.	KFSK.KW	35.0	0.30	0.00%	0.44	0.036	0.001	11.7	0.049	0.033	6.5%	56,350	1,993	10.8%	0.9%
▲ KAMCO Investment Co.	KAMC.KW	7.0	0.59	0.00%	0.14	0.081	0.003	21.3	0.089	0.062	17.4%	59,979	4,804	1.5%	8.4%
= National International Holding Co.	NIHK.KW	6.9	0.40	6.17%	0.95	0.075	0.000	16.2	0.081	0.050	20.6%	0	0	5.2%	5.8%
= UniCap Investment and Finance	UNICAP.KW	9.7	0.54	5.62%	0.72	0.053	0.000	12.7	0.085	0.050	(32.9%)	158,332	8,392	16.9%	5.6%
▲ Al Madar Finance & Investment Co.	MADR.KW	1.9	1.32	0.00%	0.41	0.132	0.002	28.2	0.180	0.011	(21.0%)	121,050	15,918	40.7%	68.6%
= Al-Deera Holding	DEER.KW	3.1	0.45	0.00%	1.54	0.014	0.000	2.7	0.026	0.016	(25.9%)	21,731	291	4.8%	14.4%
▲ Al Salam Group Holding Co.	SAGH.KW	NM	0.32	0.00%	1.61	0.038	0.001	10.2	0.040	0.016	17.4%	4,187,187	157,139	42.2%	NM
▼ Ektttab Holding Co.	EKTT.KW	NM	0.34	0.00%	1.26	0.017	(0.001)	5.4	0.029	0.019	(19.6%)	347,118	5,799	9.2%	NM
▲ Al Madina For Finance & Investment Co.	MADI.KW	NM	0.62	0.00%	1.27	0.022	0.001	8.8	0.030	0.020	4.9%	19,662,255	412,375	88.9%	NM
▲ NOOR Financial Investment Co.	NOOR.KW	1.5	0.63	5.42%	0.74	0.092	0.002	38.0	0.095	0.050	19.6%	261,710	23,785	38.1%	41.3%
▼ Tamdeen Investment Co.	TAMI.KW	11.0	0.42	4.19%	0.16	0.285	(0.015)	98.3	0.349	0.232	1.8%	7,290	2,138	0.7%	3.8%
= Kuwait Bahrain Int'l Exchange Co.	EXCH.KW	14.6	0.61	0.00%	NA	0.086	0.000	4.0	N/A	N/A	0.0%	0	0	0.0%	4.2%
▲ Kuwait Syrian Holding Co.	KSHC.KW	NM	0.41	6.70%	1.51	0.045	0.001	7.9	0.082	0.027	12.0%	120,300	4,924	46.8%	NM
▲ Asiya Capital Investment Co.	ASIYA.KW	NM	0.41	0.00%	0.85	0.037	0.003	29.2	0.041	0.030	7.4%	208,218	7,117	3.0%	NM
= Gulf North Africa Holding Co.	GNAH.KW	NM	0.78	0.00%	1.65	0.054	0.000	8.1	0.057	0.044	10.2%	147,900	7,987	16.2%	NM
= Amwal International Investment Co.	AMWA.KW	13.8	0.56	0.00%	0.60	0.056	0.000	10.0	0.087	0.051	(10.3%)	0	0	0.1%	4.1%
▼ Alimtiiaz Investment Group	ALIMK.KW	10.0	0.77	5.72%	0.81	0.134	(0.001)	151.9	0.143	0.122	0.0%	1,082,360	144,555	11.5%	7.6%
= Tamkeen Holding Co.	TAMKE.KW	NM	0.12	0.00%	NA	0.011	0.000	0.8	0.015	0.003	14.1%	0	0	1.1%	NM
= Manazel Holding Co.	MANK.KW	NM	0.60	0.00%	1.76	0.025	0.000	10.8	0.037	0.024	1.2%	0	0	5.2%	NM
▼ National Industries Group	NIND.KW	11.4	0.85	5.03%	1.33	0.227	(0.003)	324.1	0.241	0.150	50.9%	5,996,927	1,367,784	45.2%	7.4%
▼ Warba Capital Holding Co.	WARBACAP.KW	NM	1.72	0.00%	1.17	0.082	(0.004)	12.2	0.090	0.019	166.3%	110,001	8,526	11.6%	NM
▼ Arabi Holding Group Co.	AGHC.KW	NM	0.52	0.00%	0.30	0.077	(0.009)	13.2	0.092	0.060	10.9%	20	2	2.0%	0.4%
▲ Privatization Holding Co.	KPPC.KW	NM	0.41	8.53%	1.27	0.059	0.001	35.7	0.065	0.015	11.6%	40,100	2,310	18.8%	NM
= Credit Rating & Collection Co.	TAHS.KW	NM	0.52	0.00%	0.07	0.018	0.000	2.9	0.024	0.018	(21.5%)	0	0	0.2%	NM
= Egypt Kuwait Holding Co.	EKHK.KW	17.5	3.21	4.40%	0.35	0.455	0.000	466.1	0.475	0.063	40.0%	0	0	0.2%	18.4%
▼ GFH Financial Group	GFH.KW	6.7	0.83	6.01%	1.16	0.071	(0.001)	262.9	0.113	0.066	(7.0%)	1,121,102	80,313	4.7%	12.4%
= Inovent	INOV.KW	4.9	0.51	6.86%	0.97	0.073	0.000	20.9	0.092	0.070	(8.9%)	0	0	4.0%	10.5%
= Sanad Holding Co.	SANAD.KW	66.8	1.22	0.00%	0.05	0.110	0.000	48.1	0.110	0.028	10.0%	0	0	0.0%	1.8%
= Amar For Finance and Leasing Co.	AMARF.KW	NM	0.32	0.00%	0.08	0.028	0.000	5.6	0.049	0.033	(32.2%)	0	0	0.4%	NM
▲ Al-Manar Financing & Leasing Co.	ALMANAR.KW	20.8	0.38	0.00%	NA	0.041	0.003	12.5	0.075	0.000	(23.9%)	886,019	34,032	8.3%	1.8%
<b>Financial Services</b>		<b>11.4</b>	<b>0.77</b>	<b>4.51%</b>				<b>2,560.5</b>			<b>22.1%</b>	<b>60,489,199</b>	<b>3,581,984</b>		<b>6.8%</b>

**Boursa Kuwait Daily Bulletin**

Wednesday, June 12, 2019

Company	Reuters Ticker	Valuation Multiples				Price (KWD)		MKT Cap (KWD Mn.)	52 Weeks High (KWD)	52 Weeks Low (KWD)	YTD-19 Return #	Daily Trading Data		YTD-19 Capital Turnover	ROE
		Trailing P/E (X)	Trailing P/BV (X)	Dividend Yield	Beta	Closing	DTD Change					Volume (Shrs.)	Value (KWD)		
▼ Automated Systems Co.	ASCK.KW	NM	0.65	4.61%	NA	<b>0.087</b>	(0.010)	<b>8.7</b>	0.139	0.066	(19.6%)	5,040	437	0.5%	0.5%
= Osos Holding Group Co.	OSOS.KW	7.5	0.82	9.62%	<b>0.43</b>	<b>0.104</b>	0.000	<b>10.4</b>	0.118	0.080	2.0%	0	0	10.9%	10.9%
▲ Hayat Communications Co.	HAYK.KW	27.5	0.92	0.00%	<b>1.52</b>	<b>0.100</b>	0.050	<b>9.2</b>	0.100	0.025	46.9%	115,000	9,697	0.7%	3.3%
<b>Technology</b>		<b>15.8</b>	<b>0.79</b>	<b>4.94%</b>				<b>28.3</b>			<b>3.8%</b>	<b>120,040</b>	<b>10,134</b>		<b>5.0%</b>

<b>Boursa Kuwait</b>	<b>16.0</b>	<b>1.45</b>	<b>3.56%</b>			<b>34,013.3</b>			<b>17.2%</b>	<b>175,413,504</b>	<b>35,032,988</b>		<b>9.1%</b>
----------------------	-------------	-------------	--------------	--	--	-----------------	--	--	--------------	--------------------	-------------------	--	-------------

**Year-to-Date 2019 Top Movers & Most Active Stocks**

YTD Top % Gainers	Close (KWD)	Percent Change
Gulf Investment House	<b>0.060</b>	<b>237.1%</b>
Warba Capital Holding Co.	<b>0.082</b>	<b>166.3%</b>
National Industries Group	<b>0.227</b>	<b>50.9%</b>
Kuwait Real Estate Co.	<b>0.078</b>	<b>50.6%</b>
National Investment Co.	<b>0.120</b>	<b>45.5%</b>

YTD Top % Losers	Close (KWD)	Percent Change
Combined Group Contracting Co.	<b>0.194</b>	<b>(39.4%)</b>
Yiaco Medical Co.	<b>0.067</b>	<b>(37.9%)</b>
Al Mudon International Real Estate Co.	<b>0.019</b>	<b>(34.4%)</b>
ALAFCO Aviation Lease & Finance Co.	<b>0.230</b>	<b>(34.1%)</b>
United Projects Group	<b>0.420</b>	<b>(33.9%)</b>

YTD Most Active by Volume	Close (KWD)	Volume (Shrs.)
Ahli United Bank - Bahrain	<b>0.261</b>	<b>1,501,186,139</b>
Gulf Bank	<b>0.317</b>	<b>1,499,758,269</b>
A'ayan Leasing & Investment Co.	<b>0.046</b>	<b>1,121,577,056</b>
Kuwait Finance House	<b>0.695</b>	<b>729,636,212</b>
National Industries Group	<b>0.227</b>	<b>645,323,675</b>

YTD Most Active by Value	Close (KWD)	Value (KWD)
National Bank of Kuwait	<b>0.990</b>	<b>532,887,196</b>
Kuwait Finance House	<b>0.695</b>	<b>478,256,495</b>
Gulf Bank	<b>0.317</b>	<b>434,927,584</b>
Ahli United Bank - Bahrain	<b>0.261</b>	<b>370,904,283</b>
Zain	<b>0.572</b>	<b>207,293,812</b>

\* Different Fiscal Year Company