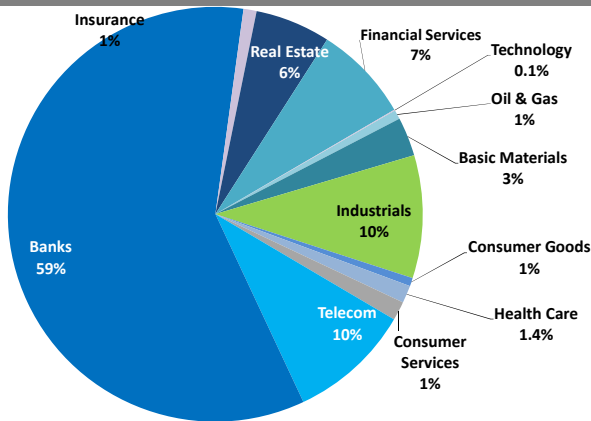


Boursa Kuwait Daily Report

June 11, 2019

Sector Weight by Market Cap



Market Capitalization - Sector Returns

	Market Cap. (KWD Mn)	DTD % Chg	MTD % Chg	YTD % Chg
Boursa Kuwait	34,153.2	▲ 0.6%	3.2%	17.7%
Oil & Gas	240.3	▲ 2.9%	2.0%	5.6%
Basic Materials	1,036.2	▼ (0.4%)	(0.2%)	0.5%
Industrials	3,272.5	▲ 0.7%	3.6%	(3.8%)
Consumer Goods	218.4	▲ 0.1%	1.3%	7.0%
Health Care	467.1	= 0.0%	0.0%	(0.5%)
Consumer Services	504.2	▼ (0.1%)	1.8%	(1.5%)
Telecommunications	3,262.9	▲ 1.3%	8.3%	20.1%
Banks	20,204.9	▲ 0.7%	3.2%	25.5%
Insurance	347.3	▲ 0.5%	0.8%	(3.6%)
Real Estate	2,004.3	▼ (0.7%)	1.4%	7.6%
Financial Services	2,570.4	▲ 0.2%	1.7%	22.6%
Technology	24.7	▲ 1.9%	0.8%	(9.6%)

Top 10 Companies by Market Capitalization

Company Name	Market Cap. (Mn KWD)	P/E (X)	ROE* (%)
1- National Bank of Kuwait	6,517.5	16.9	12.5%
2- Kuwait Finance House	4,862.6	20.7	12.9%
3- Zain	2,492.4	12.3	17.3%
4- Ahli United Bank - Bahrain	2,298.9	10.5	19.3%
5- Boubyan Bank	1,718.9	29.6	14.3%
6- Agility (PWC Logistics)	1,408.6	17.1	8.0%
7- Commercial Bank of Kuwait	1,012.0	18.5	7.7%
8- Gulf Bank	975.4	16.9	9.4%
9- Burgan Bank	895.1	11.0	11.2%
10- Mabane Co.	750.6	13.9	12.3%
Total	22,932	16.05	12.8%

*: ROE is calculated based on TTM 1Q-2019 net profit & shareholders' equity as of 31-March-19

Top Movers and Most Active Stocks

Today's Top % Gainers	Close (KWD)	Change (KWD)	Percent Change
Wethaq Takaful Insurance Co.	0.034	0.007	25.6%
Al Eid Food Co.	0.060	0.007	13.2%
Real Estate Trade Centers Co.	0.026	0.003	10.6%
Bayan Investment Co.	0.044	0.004	9.7%
Kuwait Real Estate Holding Co.	0.029	0.002	9.2%

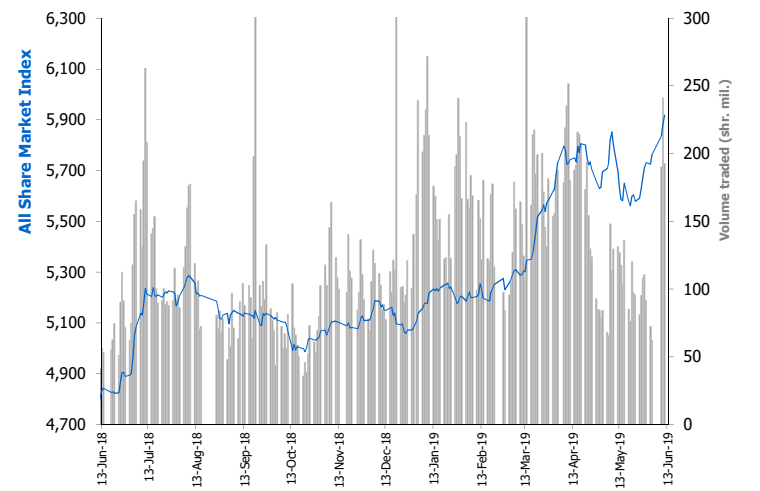
Today's Top % Losers	Close (KWD)	Change (KWD)	Percent Change
United Projects Group	0.362	(0.083)	(18.7%)
Tamdeen Real Estate Co.	0.351	(0.039)	(10.0%)
Umm Al-Qaiwain General Investments Co.	0.073	(0.008)	(10.0%)
Al Massaleh Real Estate Co.	0.033	(0.004)	(9.7%)
Al Rai Media Group Co.	0.038	(0.003)	(6.8%)

Today's Most Active by Volume	Close (KWD)	Percent Change	Volume (Shares)
Ahli United Bank - Bahrain	0.262	0.0%	15,986,111
Kuwait Real Estate Co.	0.078	2.1%	14,753,357
Kuwait Finance House	0.697	0.4%	10,449,087
Zain	0.576	2.1%	9,791,366
Abyaar Real Estate Development Co.	0.015	5.8%	9,142,755

Source: Boursa Kuwait, KAMCO Research

Market Breadth	68	40	67
Benchmark Return	Closing Value	DTD Chg	MTD % Chg
Premier Market Index	6,496.50	57.61	0.9%
Main Market Index	4,781.22	(7.44)	(0.2%)
All Share Market Index	5,917.37	36.43	0.6%
Market Cap (KWD Mn)	34,153.19	209.54	0.6%

Index Performance relative to Volume



Market Trading Data and Volatility

Trading Indicators	Today's Value	DTD Chg	DTD % Chg	Average Daily YTD 2019	Average Daily YTD 2018
Volume (Shrs Mn)	192.7	(48.4)	(20.1%)	155.4	73.1
Value Traded (KWD Mn)	45.1	(23.5)	(34.2%)	31.4	11.4
No. of Trades	7,815	(1,841)	(19.1%)	5,722	3,057

Today's Most Active by Value	Close (KWD)	Percent Change	Value (KWD)
Kuwait Finance House	0.697	0.4%	7,280,533
Zain	0.576	2.1%	5,614,494
National Bank of Kuwait	0.999	0.5%	5,260,109
Agility (PWC Logistics)	0.799	2.4%	4,335,703
Ahli United Bank - Bahrain	0.262	0.0%	4,192,053

Boursa Kuwait - Premier Market

Tuesday, June 11, 2019

Premier Market Stocks	Closing Price			Market Capitalization			Valuation Multiples				ROE	YTD-19 Price Return	YTD-19 Trading Indicators	
	KWD	DTD Chg. (KWD)	D-T-D Return	KWD Mn	Weight in Premier Index	Weight in Boursa Kuwait	P/E (X)	P/BV (X)	Yield	Beta			Volume (Mn Shrs)	Value (KWD Mn)
▲ National Bank of Kuwait	0.999	0.005	0.5%	6,517	25.9%	19.1%	16.9	2.12	3.3%	1.34	12.5%	25.8%	576.90	527.48
= Gulf Bank	0.320	0.000	0.0%	975	3.9%	2.9%	16.9	1.59	3.0%	0.93	9.4%	27.0%	1,494.63	433.29
= Kuwait International Bank	0.289	0.000	0.0%	312	1.2%	0.9%	16.1	1.16	3.3%	0.97	7.2%	13.8%	424.09	123.87
▲ Burgan Bank	0.341	0.014	4.3%	895	3.6%	2.6%	11.0	1.23	3.3%	1.00	11.2%	28.8%	301.89	98.19
▲ Kuwait Finance House	0.697	0.003	0.4%	4,863	19.3%	14.2%	20.7	2.67	2.6%	1.58	12.9%	25.5%	723.86	474.24
▲ Boubyan Bank	0.596	0.015	2.6%	1,719	6.8%	5.0%	29.6	4.23	1.1%	0.92	14.3%	28.5%	123.22	70.43
▼ Kuwait Projects Co. (Holding)	0.215	(0.003)	(1.4%)	333	1.3%	1.0%	11.4	1.22	5.5%	0.77	10.7%	3.4%	66.93	14.05
▼ Mabane Co.	0.720	(0.006)	(0.8%)	751	3.0%	2.2%	13.9	1.71	1.6%	1.03	12.3%	25.9%	79.86	51.58
▲ National Industries Group (Holding)	0.230	0.001	0.4%	328	1.3%	1.0%	11.6	0.86	5.0%	1.33	7.4%	52.8%	639.33	130.71
▼ Boubyan Petrochemical Co.	0.934	(0.006)	(0.6%)	500	2.0%	1.5%	47.4	1.72	5.2%	0.75	3.6%	(4.2%)	28.06	26.44
▼ Qurain Petrochemicals Industries Co.	0.375	(0.002)	(0.5%)	412	1.6%	1.2%	9.1	1.07	4.0%	0.68	11.7%	4.2%	48.96	18.67
▲ Agility Public Warehousing Co.	0.799	0.019	2.4%	1,409	5.6%	4.1%	17.1	1.36	1.5%	1.50	8.0%	14.6%	144.96	115.35
▲ Mobile Telecommunications Co.	0.576	0.012	2.1%	2,492	9.9%	7.3%	12.3	2.13	5.2%	1.65	17.3%	28.3%	419.50	202.21
▲ Human Soft Holding Co.	3.400	0.070	2.1%	416	1.7%	1.2%	12.8	5.49	5.4%	0.41	42.7%	3.7%	15.15	48.91
▲ GFH Financial Group (B.S.C)	0.073	0.001	1.7%	268	1.1%	0.8%	6.8	0.84	5.9%	1.16	12.4%	(5.3%)	173.52	13.32
= Ahli United Bank (B.S.C)	0.262	0.000	0.0%	2,299	9.1%	6.7%	10.5	2.03	4.4%	0.77	19.3%	42.7%	1,492.08	368.53
▲ Warba Bank	0.252	0.001	0.4%	378	1.5%	1.1%	27.7	1.89	0.0%	0.90	6.8%	20.0%	384.35	89.98
▲ Mezzan Holding Co.	0.540	0.002	0.4%	168	0.7%	0.5%	21.7	1.51	2.9%	0.57	7.0%	8.0%	30.74	14.27
▲ Integrated Holding Co.	0.615	0.015	2.5%	135	0.5%	0.4%	8.9	1.95	6.5%	0.22	22.0%	(26.8%)	28.21	20.48
Subtotal- Premier Market Stocks	5,917.37	36.43	0.62%	25,169	100%	74%	15.6	1.97	3.27%		12.6%	16.5%	7,196.23	2,842.00
Remaining of the Market				8,984		26%	17.6	0.85	4.31%		4.8%		9,591.11	544.00

Boursa Kuwait Daily Bulletin

Tuesday, June 11, 2019

Company	Reuters Ticker	Valuation Multiples				Price (KWD)		MKT Cap (KWD Mn.)	52 Weeks High (KWD)	52 Weeks Low (KWD)	YTD-19 Return #	Daily Trading Data		YTD-19	
		Trailing P/E (X)	Trailing P/BV (X)	Dividend Yield	Beta	Closing	DTD Change					Volume (Shrs.)	Value (KWD)	Capital Turnover	ROE
▲ Senergy Holding Co.	SENE.KW	NM	0.32	0.00%	1.40	0.024	0.002	4.7	0.037	0.021	(23.7%)	25,806	555	3.6%	NM
= Independent Petroleum Group	IPGK.KW	12.4	0.85	5.54%	0.31	0.416	0.000	78.4	0.450	0.379	3.7%	0	0	2.3%	6.9%
▲ National Petroleum Services Co.	NAPS.KW	8.7	3.28	6.53%	0.19	1.040	0.070	104.0	1.170	0.731	13.0%	100	104	0.6%	37.5%
▼ The Energy House Co.	ENER.KW	NM	0.69	0.00%	0.91	0.024	(0.000)	18.3	0.051	0.024	(32.8%)	182,729	4,452	2.3%	NM
▼ Gulf Petroleum Investment	GPIK.KW	NM	0.26	0.00%	1.24	0.024	(0.001)	10.9	0.033	0.021	(18.6%)	2,864,401	69,103	111.8%	NM
= Burgan Co. for Drilling, Tdg. & Maint. *	ABAR.KW	7.7	0.38	0.00%	NA	0.099	0.000	24.0	0.123	0.080	4.2%	0	0	0.4%	4.9%
Oil & Gas		15.2	0.89	4.63%				240.3			5.6%	3,073,036	74,214		5.8%
▲ Kuwait Foundry Co.	KFDC.KW	33.2	0.88	3.10%	0.44	0.258	0.010	39.7	0.289	0.175	35.1%	39,220	10,070	12.8%	2.7%
▼ Boubyan Petrochemicals Co.*	BPCC.KW	47.4	1.72	5.21%	0.75	0.934	(0.006)	499.5	1.090	0.780	(4.2%)	415,333	389,036	5.2%	3.6%
= Al Kout for Industrial Projects Co.	ALKK.KW	13.5	2.72	5.95%	0.05	0.840	0.000	84.8	0.840	0.362	0.0%	0	0	0.0%	20.2%
▼ Qurain Petrochemical Industries Co. *	ALQK.KW	9.1	1.07	4.04%	0.68	0.375	(0.002)	412.2	0.415	0.321	4.2%	69,722	26,117	4.5%	11.7%
Basic Materials		16.4	1.37	4.72%				1,036.2			0.5%	524,275	425,222		8.4%
▼ Specialities Group Holding Co.	SPEC.KW	6.8	0.37	0.00%	0.35	0.069	(0.000)	10.3	0.082	0.057	0.4%	533,536	35,969	14.5%	5.4%
= Kuwait Cement Co.	KCEM.KW	33.2	1.06	5.03%	0.46	0.290	0.000	212.7	0.422	0.327	(23.5%)	0	0	0.3%	3.2%
▲ Gulf Cable & Electrical Ind. Co.	CABL.KW	7.7	0.52	6.72%	1.03	0.402	0.007	84.4	0.420	0.346	14.5%	413,091	164,904	8.9%	6.7%
▲ Heavy Eng'g Ind. & Shipbuilding Co.	SHIP.KW	6.6	1.17	7.83%	0.48	0.383	0.001	69.0	0.538	0.307	(11.3%)	297,696	113,967	18.6%	17.7%
▼ Kuwait Portland Cement Co.	PCEM.KW	11.6	1.63	8.21%	0.50	1.218	(0.012)	122.1	1.459	0.149	7.0%	302,910	369,921	6.5%	14.0%
= Shuaiba Industrial Co.	PAPE.KW	20.6	0.89	5.97%	0.17	0.165	0.000	16.6	0.249	0.012	(12.2%)	0	0	0.2%	4.3%
= Metal & Recycling Co.	MRCK.KW	NM	0.56	0.00%	0.02	0.070	0.000	7.0	0.089	0.012	11.1%	0	0	0.1%	NM
= ACICO Industries Co.	ACIC.KW	46.2	0.43	3.61%	0.43	0.138	0.000	43.8	0.245	0.150	(17.4%)	0	0	3.9%	0.9%
= Hilal Cement Co.	HCKK.KW	17.3	0.84	0.00%	0.13	0.122	0.000	12.4	0.146	0.067	8.9%	0	0	0.7%	4.9%
▼ National Industries Co.	NIBM.KW	14.9	0.81	5.24%	0.19	0.184	(0.004)	66.3	0.202	0.160	(8.0%)	38,888	7,205	0.5%	5.5%
▲ Equipment Holding Co.	EQUI.KW	NM	0.50	0.00%	1.36	0.022	0.001	3.0	0.034	0.025	(17.4%)	36,624	778	20.3%	NM
= National Co. for Consumer Industries	NCCI.KW	27.3	0.33	0.00%	NA	0.030	0.000	2.7	0.084	0.035	(31.8%)	0	0	0.4%	1.2%
▲ Salbookh Trading Co.	SALB.KW	NM	0.53	0.00%	0.75	0.045	0.002	4.7	0.052	0.036	12.5%	165,212	7,134	30.5%	NM
▲ Agility (PWC Logistics)	AGLT.KW	17.1	1.36	1.54%	1.50	0.799	0.019	1,408.6	0.943	0.315	14.6%	5,433,845	4,335,703	8.2%	8.0%
= Educational Holding Group*	EDUK.KW	12.0	1.94	4.69%	0.17	0.320	0.000	78.5	0.340	0.056	3.2%	0	0	0.5%	16.2%
= National Cleaning Co.	CLEA.KW	10.5	0.45	7.39%	0.94	0.066	0.000	16.4	0.072	0.048	14.5%	13,025	809	5.2%	4.3%
▼ Kuwait & Gulf Link Transport Co.	KGLK.KW	8.7	0.34	5.95%	0.93	0.080	(0.002)	22.2	0.128	0.090	(16.4%)	69,596	5,394	13.2%	3.9%
= Kuwait Co. For Process Plant Const. & Cont.	KPCP.KW	5.4	0.87	8.91%	0.34	0.217	0.000	21.8	0.260	0.159	(5.7%)	15,210	3,042	1.8%	16.1%
▲ Humansoft Holding Co.	HUMN.KW	12.8	5.49	5.42%	0.41	3.400	0.070	415.6	3.800	2.996	3.7%	60,063	203,641	12.4%	42.7%
= Gulf Franchising Co.	GFCI.KW	NM	0.60	0.00%	NA	0.051	0.000	2.0	0.250	0.011	(27.1%)	0	0	0.0%	NM
▼ National Shooting Co.	SHOOTING.KW	NM	0.18	0.00%	1.77	0.013	(0.000)	3.6	0.021	0.015	(20.6%)	340,040	4,050	12.4%	NM
▼ Combined Group Contracting Co.	CGCK.KW	5.9	0.65	10.23%	NA	0.195	(0.005)	31.9	0.430	0.295	(39.1%)	46,359	9,100	7.5%	11.0%
▼ United Projects Group	UPAC.KW	6.3	0.82	4.48%	0.03	0.362	(0.083)	59.5	0.690	0.217	(43.0%)	6,301	2,417	0.4%	13.2%
▼ ALAFCO Aviation Lease & Finance Co.*	ALAF.KW	12.6	0.68	4.42%	0.37	0.226	(0.003)	215.2	0.372	0.054	(35.2%)	4,526,269	1,026,511	3.7%	5.4%
▲ Mubarrad Holding Co.	MBRD.KW	6.0	0.48	8.29%	0.86	0.059	0.001	9.7	0.080	0.040	(8.8%)	228,370	13,223	32.4%	8.0%
▲ KGL Logistics Co.	LOGK.KW	5.6	0.31	0.00%	0.81	0.042	0.000	30.8	0.046	0.040	3.7%	2,309,644	96,867	29.6%	5.6%
▲ Integrated holding Co.	INTEGRATED.KW	8.9	1.95	6.50%	0.22	0.615	0.015	135.3	0.970	0.720	(26.8%)	354,975	216,929	12.8%	22.0%
= Sharjah Cement Co.	SCEM.KW	26.5	0.34	12.31%	0.46	0.065	0.000	39.5	0.087	0.054	(25.2%)	0	0	0.2%	1.3%
▼ Gulf Cement Co.	GCEM.KW	NM	0.58	13.09%	0.44	0.061	(0.001)	50.2	0.084	0.058	(10.0%)	1,049	59	0.5%	NM
▼ Umm Al-Qaiwain General Investments Co.	QIC.KW	16.2	0.46	9.60%	0.19	0.073	(0.008)	26.5	0.091	0.044	9.6%	5,722	47	0.5%	2.8%
▼ Fujairah Cement Industries Co.	FCEM.KW	31.8	0.22	11.21%	0.55	0.054	(0.001)	19.0	0.073	0.055	(15.7%)	5,700	307	6.0%	0.7%
▲ Ras-Al-Khaimah for White Cement Co.	RKWC.KW	26.4	0.50	8.00%	0.19	0.063	0.001	31.3	0.087	0.059	(16.6%)	10,000	625	0.3%	1.9%
Industrials		14.4	1.05	4.09%				3,272.5			(3.8%)	15,214,125	6,618,972		7.3%

Company	Reuters Ticker	Valuation Multiples				Price (KWD)		MKT Cap (KWD Mn.)	52 Weeks High (KWD)	52 Weeks Low (KWD)	YTD-19 Return #	Daily Trading Data		YTD-19 Capital Turnover	ROE
		Trailing P/E (X)	Trailing P/BV (X)	Dividend Yield	Beta	Closing	DTD Change					Volume (Shrs.)	Value (KWD)		
= Palms Agro Production Co.	PAPK.KW	NM	0.53	13.31%	0.31	0.075	0.000	3.9	0.080	0.037	25.0%	0	0	0.8%	NM
▼ Livestock Transport & Trading Co.	CATT.KW	NM	1.09	2.43%	0.39	0.199	(0.002)	43.1	0.259	0.026	5.9%	411	82	1.2%	NM
▲ Danah Alsafat Foodstuff Co.	DANK.KW	NM	0.30	0.00%	0.53	0.027	0.000	3.3	0.053	0.036	(29.1%)	135,665	3,624	16.6%	NM
▲ Mezzan Holding Co.	MEZZ.KW	21.7	1.51	2.91%	0.57	0.540	0.002	168.1	0.771	0.431	8.0%	4,437	2,388	9.9%	7.0%
Consumer Goods		55.0	1.29	2.96%				218.4			7.0%	140,513	6,094		2.4%
= Advanced Technology Co.	ATCK.KW	28.5	2.52	1.50%	NA	1.000	0.000	150.0	1.000	0.067	0.0%	0	0	0.0%	8.8%
= Yiacco Medical Co.	YIAC.KW	NM	13.64	0.00%	0.61	0.067	0.000	12.1	0.139	0.080	(37.9%)	0	0	0.0%	NM
= Al-Maidan Clinic For Oral Health Services Co.	MIDAN.KW	53.0	8.69	0.41%	0.01	1.220	0.000	305.0	1.260	1.080	1.7%	0	0	0.1%	16.4%
Health Care		NM	4.90	0.75%				467.1			(0.5%)	0	0		3.2%
= Kuwait National Cinema Co.	KCIN.KW	11.8	1.18	5.18%	0.16	0.890	0.000	89.9	1.090	0.830	(16.7%)	0	0	0.1%	10.0%
= Kuwait Hotels Co.	KHOT.KW	NM	1.15	0.00%	NA	0.100	0.000	5.8	0.130	0.046	(23.1%)	0	0	0.0%	NM
▲ Sultan Center Food Products Co.	SCFK.KW	12.8	0.65	0.00%	0.69	0.049	0.001	28.6	0.076	0.013	(6.4%)	556,581	26,787	9.8%	5.1%
= Kuwait Cable Vision Co.	KWTV.KW	NM	0.75	0.00%	0.33	0.020	0.000	0.7	0.033	0.008	0.5%	0	0	1.9%	NM
▼ IFA Hotels & Resorts Co.*	IFAH.KW	NM	1.12	0.00%	0.14	0.065	(0.000)	41.1	0.110	0.054	(27.3%)	500	32	0.3%	NM
▼ Oula Fuel Marketing Co.	OULA.KW	12.8	0.72	4.07%	0.45	0.121	(0.002)	49.0	0.136	0.052	2.5%	18,887	2,270	2.5%	5.6%
▼ Kuwait Resorts Co.	MUNK.KW	7.9	0.38	9.49%	0.71	0.053	(0.001)	10.4	0.067	0.052	(6.4%)	499,782	26,361	37.4%	4.8%
= Jazeera Airways Co.	JAZK.KW	22.0	5.55	3.76%	0.28	0.930	0.000	186.0	0.935	0.114	27.4%	33,500	31,142	6.2%	25.2%
= Soor Fuel Marketing Co.	SOOR.KW	14.3	0.73	4.16%	0.39	0.119	0.000	48.2	0.139	0.110	3.5%	58,715	7,037	2.6%	5.1%
▲ Future Kid Entertainment and R.E Co.	KIDK.KW	10.8	0.51	13.13%	NA	0.090	0.000	10.5	0.135	0.088	(5.2%)	10,282	926	2.6%	4.7%
▼ Al Rai Media Group Co.	ALRA.KW	NM	0.65	NM	0.57	0.038	(0.003)	8.9	0.109	0.047	(37.4%)	20,000	764	3.5%	NM
= Jiyad Holding Co	JIYAD.KW	15.5	0.50	0.00%	0.70	0.055	0.000	19.2	0.103	0.064	(23.4%)	2,057	113	37.0%	3.2%
▲ Al Eid Food Co.	ALEID.KW	4.2	0.36	0.00%	0.02	0.060	0.007	6.0	0.077	0.052	(9.1%)	15,000	892	1.1%	8.5%
Consumer Services		NM	1.13	4.68%				504.2			(1.5%)	1,215,304	96,324		NM
▲ Zain	ZAIN.KW	12.3	2.13	5.21%	1.65	0.576	0.012	2,492.4	0.577	0.385	28.3%	9,791,366	5,614,494	9.7%	17.3%
▼ National Mobile Telecom Co.	OORE.KW	11.8	0.64	7.26%	0.50	0.685	(0.003)	345.3	0.889	0.010	(4.1%)	39,158	26,511	0.6%	5.5%
▲ AAN digital services Co.	AAN.KW	NM	0.38	0.00%	1.64	0.012	0.001	10.7	0.022	0.016	(29.3%)	2,724,689	32,290	16.7%	NM
▼ Kuwait Telecommunication Co.	VIVA.KW	8.5	2.28	4.82%	0.74	0.830	(0.021)	414.5	0.899	0.685	3.7%	77,228	65,546	0.9%	26.7%
Telecommunications		11.7	1.70	5.36%				3,262.9			20.1%	12,632,441	5,738,841		14.6%
▲ National Bank of Kuwait	NBKK.KW	16.9	2.12	3.29%	1.34	0.999	0.005	6,517.5	1.000	0.270	25.8%	5,275,474	5,260,109	8.8%	12.5%
= Gulf Bank	GBKK.KW	16.9	1.59	2.97%	0.93	0.320	0.000	975.4	0.330	0.233	27.0%	6,237,814	1,996,601	49.0%	9.4%
▲ Commercial Bank of Kuwait	CBKK.KW	18.5	1.42	3.56%	0.70	0.508	0.003	1,012.0	0.700	0.299	11.8%	1,000	508	0.7%	7.7%
▲ Ahli Bank of Kuwait	ABKK.KW	11.5	0.89	4.38%	0.61	0.317	0.002	513.3	0.350	0.284	7.5%	295,140	93,051	1.0%	7.7%
▲ Ahli United Bank - Kuwait	BKME.KW	12.6	1.55	4.06%	0.76	0.317	0.002	653.9	0.369	0.248	12.1%	462,002	146,396	3.7%	12.3%
= Kuwait International Bank	KIBK.KW	16.1	1.16	3.29%	0.97	0.289	0.000	311.8	0.343	0.217	13.8%	4,867,679	1,408,910	39.3%	7.2%
▲ Burgan Bank	BURG.KW	11.0	1.23	3.34%	1.00	0.341	0.014	895.1	0.405	0.246	28.8%	5,105,747	1,716,003	11.5%	11.2%
▲ Kuwait Finance House	KFH.KW	20.7	2.67	2.58%	1.58	0.697	0.003	4,862.6	0.718	0.512	25.5%	10,449,087	7,280,533	10.4%	12.9%
▲ Boubyan Bank	BOUK.KW	29.6	4.23	1.11%	0.92	0.596	0.015	1,718.9	0.630	0.215	28.5%	1,900,652	1,123,546	4.3%	14.3%
▲ Warba Bank	WARB.KW	27.7	1.89	0.00%	0.90	0.252	0.001	378.0	0.265	0.205	20.0%	7,248,248	1,819,697	25.6%	6.8%
= Ahli United Bank - Bahrain	AUBK.KW	10.5	2.03	4.43%	0.77	0.262	0.000	2,298.9	0.277	0.019	42.7%	15,986,111	4,192,053	17.0%	19.3%
= Ithmaar Bank	ITHMR.KW	NM	1.84	0.00%	1.50	0.022	0.000	67.6	0.038	0.024	(10.8%)	0	0	4.9%	NM
Banks		16.6	2.02	3.04%				20,204.9			25.5%	57,828,954	25,037,407		12.1%

Company	Reuters Ticker	Valuation Multiples				Price (KWD)		MKT Cap (KWD Mn.)	52 Weeks High (KWD)	52 Weeks Low (KWD)	YTD-19 Return #	Daily Trading Data		YTD-19	
		Trailing P/E (X)	Trailing P/BV (X)	Dividend Yield	Beta	Closing	DTD Change					Volume (Shrs.)	Value (KWD)	Capital Turnover	ROE
= Kuwait Insurance Co.	KINS.KW	7.1	0.80	6.61%	0.03	0.360	0.000	69.9	0.427	0.275	0.0%	0	0	1.5%	11.3%
= Gulf Insurance Group	GINS.KW	9.4	1.37	5.56%	0.05	0.620	0.000	116.0	0.730	0.401	(5.3%)	1,030	638	0.1%	14.6%
▲ Ahleiah Insurance Co.	AINS.KW	8.7	0.86	8.09%	0.20	0.425	0.004	85.0	0.450	0.056	(0.5%)	16,020	6,809	1.5%	9.8%
= Warba Insurance Co.	WINS.KW	11.2	0.31	0.00%	0.59	0.070	0.000	12.1	0.092	0.055	6.1%	0	0	1.3%	2.8%
= Kuwait Reinsurance Co.	KWRE.KW	6.9	0.54	3.23%	NA	0.145	0.000	27.4	0.198	0.037	(21.2%)	0	0	0.3%	7.9%
= First Takaful Insurance Co.	FTIK.KW	6.6	0.50	0.00%	0.11	0.044	0.000	4.6	0.053	0.027	(1.4%)	0	0	1.4%	7.6%
▲ Wethaq Takaful Insurance Co.	WETH.KW	54.4	0.32	0.00%	0.72	0.034	0.007	3.7	0.045	0.024	21.5%	29,599	884	14.9%	0.6%
= Bahrain Kuwait Insurance Co.	BKIK.KW	12.2	1.03	12.50%	0.04	0.200	0.000	28.6	0.200	0.200	0.0%	0	0	0.0%	8.4%
Insurance		8.7	0.85	6.45%				347.3			(3.6%)	46,649	8,330		9.8%
▲ Sokouk Holding Co.	SHCK.KW	NM	0.40	0.00%	1.44	0.033	0.001	19.3	0.052	0.038	(17.5%)	4,052,909	129,324	28.2%	NM
▲ Kuwait Real Estate Co.	KREK.KW	9.1	0.54	0.00%	1.35	0.078	0.002	73.9	0.079	0.044	50.4%	14,753,357	1,133,533	51.2%	5.9%
= United Real Estate Co.	UREK.KW	NM	0.37	0.00%	0.64	0.060	0.000	71.2	0.070	0.057	(0.2%)	0	0	0.3%	NM
▲ National Real Estate Co.	NREK.KW	10.1	0.40	0.00%	1.33	0.078	0.001	105.5	0.124	0.080	(14.8%)	1,549,006	119,318	6.9%	4.0%
▲ Salhia Real Estate Co.	SREK.KW	11.3	1.13	5.60%	0.31	0.344	0.005	176.4	0.350	0.324	4.2%	600,849	200,006	3.1%	10.1%
▼ Tamdeen Real Estate Co.	TAMK.KW	24.1	0.88	2.77%	0.26	0.351	(0.039)	151.6	0.400	0.126	0.3%	5,512	1,935	0.4%	3.7%
▼ Ajial Real Estate Entertainment Co.	AREC.KW	10.7	0.20	3.83%	0.38	0.130	(0.001)	24.1	0.159	0.032	(3.7%)	287,000	37,310	2.4%	1.8%
▼ Al Massaleh Real Estate Co.	MREC.KW	NM	0.35	0.00%	0.45	0.033	(0.004)	7.9	0.049	0.027	(8.7%)	153,234	5,189	3.4%	NM
▼ Arab Real Estate Co.	ARAB.KW	NM	0.27	0.00%	1.39	0.030	(0.001)	15.4	0.035	0.027	4.9%	119	4	12.8%	NM
▲ AL-Enma'a Real Estate Co.*	ENMA.KW	NM	0.38	0.00%	0.79	0.038	0.001	17.1	0.048	0.030	15.9%	50,668	1,826	36.5%	NM
▼ Mabaneer Co.	MABK.KW	13.9	1.71	1.57%	1.03	0.720	(0.006)	750.6	0.729	0.076	25.9%	342,804	247,378	7.7%	12.3%
= Injazat Real Estate Development Co.	INJA.KW	7.0	0.48	8.12%	0.51	0.084	0.000	29.0	0.090	0.009	(2.3%)	0	0	1.7%	6.9%
▲ Investors Holding Group Co.	INVK.KW	NM	0.27	0.00%	1.61	0.010	0.000	6.4	0.016	0.012	(15.6%)	7,991,689	81,178	94.3%	NM
▼ International Resorts Co.	IRCK.KW	6.1	0.36	0.00%	1.47	0.022	(0.001)	3.4	0.030	0.018	(3.1%)	10	0	1.2%	5.8%
= The Commercial Real Estate Co.	TIJK.KW	11.7	0.55	5.43%	0.80	0.093	0.000	163.0	0.098	0.030	1.1%	1,406,123	130,003	6.4%	4.7%
= Sanam Real Estate Co.	SANK.KW	NM	0.62	0.00%	0.47	0.050	0.000	6.0	0.063	0.026	42.7%	0	0	2.8%	NM
▲ A'ayan Real Estate Co.	AYRE.KW	3.8	0.34	8.35%	0.88	0.059	0.001	24.5	0.068	0.045	2.4%	222,880	12,905	10.9%	8.9%
= Aqar Real Estate Investment Co.	AQAR.KW	11.9	0.56	6.96%	NA	0.065	0.000	15.2	0.071	0.023	6.2%	0	0	0.4%	4.7%
▲ Kuwait Real Estate Holding Co.	ALAQ.KW	41.7	0.50	0.00%	1.06	0.029	0.002	5.4	0.035	0.020	14.0%	450	13	1.8%	1.2%
▲ MAZAYA Holding Co.	MAZA.KW	8.6	0.45	13.36%	1.39	0.060	0.001	41.1	0.094	0.070	(14.8%)	4,656,881	277,942	35.8%	5.2%
= Tijara Real Estate & Investment Co.	TIJA.KW	17.4	0.46	4.15%	0.69	0.048	0.000	17.8	0.057	0.025	(1.6%)	0	0	0.6%	2.6%
▲ Al TAMEER Real Estate Investment Co.	AMAR.KW	NM	0.43	0.00%	1.41	0.030	0.000	7.2	0.046	0.026	7.1%	159,433	4,771	109.0%	NM
▲ Arkan Al-Kuwait Real Estate Co. *	ARKK.KW	16.3	0.55	10.26%	0.35	0.078	0.001	19.6	0.091	0.072	(6.6%)	40,000	3,120	1.7%	3.4%
= Al-Argan International Real Estate Co.	ARGK.KW	NM	0.52	2.74%	0.40	0.176	0.000	46.6	0.176	0.012	29.4%	0	0	0.1%	0.6%
▲ Abyaar Real Estate Development Co.	ABYR.KW	NM	0.19	0.00%	1.57	0.015	0.001	16.3	0.020	0.015	(3.3%)	9,142,755	132,161	55.9%	NM
▲ Munshaat Real Estate Projects Co.	MUNS.KW	NM	0.59	0.00%	1.06	0.083	0.003	26.8	0.120	0.027	(16.9%)	361,020	29,220	3.2%	NM
= First Dubai For Real Estate Development	FIRST.KW	20.2	0.43	0.00%	1.58	0.032	0.000	31.9	0.047	0.035	(15.4%)	53,351	1,676	3.8%	2.1%
▲ Kuwait Business Town Real Estate Co.	KBTK.KW	8.8	0.37	7.18%	1.36	0.040	0.001	25.0	0.054	0.042	(7.5%)	452,139	17,617	4.4%	4.2%
= Real Estate Asset Management Co.	REAM.KW	35.7	1.10	2.91%	0.01	0.171	0.000	17.9	1.415	0.033	(5.0%)	0	0	0.0%	3.1%
▲ MENA Real Estate Co. *	MENK.KW	2.7	0.48	0.00%	0.94	0.038	0.002	5.2	0.050	0.017	6.7%	4,572,306	170,966	173.8%	17.6%
▲ Al Mudon International Real Estate Co.	ALMK.KW	NM	0.14	0.00%	1.37	0.019	0.001	1.9	0.032	0.020	(34.7%)	38,112	686	13.6%	NM
▲ Real Estate Trade Centers Co.	MARA.KW	NM	0.15	0.00%	0.45	0.026	0.003	3.5	0.037	0.018	18.2%	769,106	19,697	22.0%	0.0%
▲ Kuwait Remal Real Estate Co.	REMA.KW	NM	0.40	0.00%	1.01	0.030	0.000	9.2	0.050	0.029	(28.1%)	689,372	20,940	36.8%	NM
▼ Mashaer Holding Co.	MASHAER.KW	NM	0.59	0.00%	0.28	0.072	(0.002)	12.9	0.088	0.015	(14.0%)	451,967	32,428	131.3%	NM
= Effect Real Estate Co.	EFFECT.KW	NM	0.28	0.00%	0.82	0.020	0.000	1.6	0.025	0.009	119.8%	0	0	12.7%	NM
▼ Ajwan Gulf Real Estate Co.	AJWN.KW	NM	0.26	0.00%	0.46	0.015	(0.000)	3.0	0.025	0.017	(20.3%)	706,571	9,928	55.6%	NM
= Al Masaken Intl. Real Estate Dev. Co.	MASKN.KW	NM	0.83	0.00%	0.36	0.070	0.000	7.0	0.100	0.036	12.0%	0	0	0.2%	NM
= Dalqan Real Estate Co.	DALQ.KW	NM	2.76	0.00%	NA	0.350	0.000	17.5	0.350	0.179	0.0%	0	0	0.0%	2.2%
= Dar Al Thuraya Real Estate Co.	THURY.KW	26.1	1.74	0.00%	NA	0.179	0.000	26.2	0.220	0.220	(18.6%)	0	0	0.0%	6.7%
Real Estate		30.0	0.70	2.64%				2,004.3			7.6%	53,509,623	2,821,071		2.3%

Boursa Kuwait Daily Bulletin

Tuesday, June 11, 2019

Company	Reuters Ticker	Valuation Multiples				Price (KWD)		MKT Cap (KWD Mn.)	52 Weeks High (KWD)	52 Weeks Low (KWD)	YTD-19 Return #	Daily Trading Data		YTD-19	
		Trailing P/E (X)	Trailing P/BV (X)	Dividend Yield	Beta	Closing	DTD Change					Volume (Shrs.)	Value (KWD)	Capital Turnover	ROE
▲ Kuwait Investment Co.	KINV.KW	5.0	0.59	8.02%	0.60	0.124	0.001	68.4	0.139	0.107	(4.6%)	464,935	57,506	8.8%	11.7%
▼ Commercial Facilities Co.	FACI.KW	10.3	0.65	8.21%	0.58	0.196	(0.002)	105.2	0.211	0.021	12.0%	116,400	23,014	2.8%	6.3%
= Int'l Financial Advisors Co.	IFIN.KW	NM	0.70	0.00%	1.60	0.023	0.000	16.6	0.039	0.021	(18.1%)	0	0	24.4%	NM
= National Investment Co.	NINV.KW	11.1	0.57	5.31%	1.31	0.120	0.000	105.1	0.123	0.070	45.5%	937,892	112,574	17.4%	5.2%
▼ Kuwait Projects Co.(Holding)	KPRO.KW	11.4	1.22	5.46%	0.77	0.215	(0.003)	332.7	0.252	0.033	3.4%	366,237	79,300	4.3%	10.7%
= Coast Invest. & Development Co.	COAS.KW	15.4	0.43	0.00%	1.96	0.038	0.000	23.5	0.045	0.028	13.3%	0	0	9.3%	2.8%
▲ The Securities House Co.	SECH.KW	NM	0.52	0.00%	1.29	0.049	0.001	21.8	0.062	0.045	(8.5%)	645,383	30,962	40.0%	0.2%
▼ Arzan Financial Group For Fin. & Invest.	ARZA.KW	6.5	0.26	0.00%	1.14	0.033	(0.000)	26.1	0.038	0.025	9.1%	2,634,562	86,216	15.7%	3.9%
▲ Kuwait Financial Centre	MARKZ.KW	10.0	0.45	5.68%	0.65	0.088	0.001	42.3	0.110	0.032	(12.0%)	136,955	12,021	0.9%	4.4%
= Kuwait & M.E. Financial Inv. Co.	KMEF.KW	31.1	0.61	0.00%	0.72	0.036	0.000	9.5	0.054	0.019	12.5%	19,460	654	13.5%	2.0%
▼ Al-Aman Investment Co.	AMAN.KW	9.5	0.51	0.00%	0.79	0.058	(0.001)	8.7	0.081	0.034	18.5%	255,500	14,874	69.3%	5.4%
▲ First Investment Co.	OLAK.KW	12.7	0.27	0.00%	0.97	0.039	0.001	25.5	0.045	0.016	(1.0%)	5,731,518	224,276	81.0%	2.2%
▲ Al-Mal Investment Co.	MALK.KW	NM	0.60	0.00%	1.64	0.017	0.001	5.2	0.025	0.017	(12.0%)	196,001	3,255	18.0%	NM
▲ Gulf Investment House	GIHK.KW	1.7	0.65	0.00%	1.11	0.058	0.000	23.5	0.083	0.014	225.3%	35,000	2,003	8.8%	37.0%
▲ A'ayan Leasing & Investment Co.	AAYA.KW	NM	0.46	0.00%	1.38	0.045	0.001	36.2	0.056	0.029	19.3%	8,766,842	387,422	135.8%	NM
▲ Bayan Investment Co.	BAYK.KW	NM	0.46	0.00%	1.62	0.044	0.004	17.2	0.052	0.034	(9.1%)	198,737	8,030	3.0%	NM
▼ Osoul Investment Co.	OSUL.KW	7.9	0.52	9.24%	0.46	0.060	(0.004)	11.3	0.064	0.050	(0.7%)	43,375	2,630	1.9%	6.6%
▲ Kuwait Finance & Investment Co.	KFSK.KW	34.2	0.29	0.00%	0.45	0.035	0.000	11.4	0.049	0.033	4.1%	32,000	1,135	10.8%	0.9%
▲ KAMCO Investment Co.	KAMC.KW	6.8	0.57	0.00%	0.15	0.078	0.004	20.5	0.091	0.062	13.0%	56,633	4,358	1.4%	8.4%
▲ National International Holding Co.	NIHK.KW	6.9	0.40	6.17%	0.95	0.075	0.000	16.2	0.081	0.050	20.6%	30,700	2,074	5.2%	5.8%
▲ UniCap Investment and Finance	UNICAP.KW	9.7	0.54	5.62%	0.72	0.053	0.001	12.7	0.085	0.050	(32.9%)	174,668	9,107	16.9%	5.6%
▼ Al Madar Finance & Investment Co.	MADR.KW	1.9	1.30	0.00%	0.42	0.130	(0.005)	27.8	0.180	0.011	(22.2%)	869,410	115,500	40.6%	68.6%
▲ Al-Deera Holding	DEER.KW	3.1	0.45	0.00%	1.54	0.014	0.000	2.7	0.026	0.016	(25.9%)	180,431	2,446	4.8%	14.4%
▲ Al Salam Group Holding Co.	SAGH.KW	NM	0.32	0.00%	1.61	0.037	0.001	10.0	0.040	0.016	15.9%	2,730,904	101,303	40.6%	NM
= Ekttitab Holding Co.	EKTT.KW	NM	0.36	0.00%	1.26	0.018	0.000	5.7	0.029	0.019	(14.4%)	141,004	2,397	9.1%	NM
▼ Al Madina For Finance & Investment Co.	MADI.KW	NM	0.58	0.00%	1.28	0.020	(0.000)	8.3	0.030	0.020	(1.0%)	3,715,234	74,822	84.1%	NM
▲ NOOR Financial Investment Co.	NOOR.KW	1.5	0.62	5.55%	0.74	0.090	0.003	37.2	0.095	0.050	17.0%	2,297,843	200,655	38.1%	41.3%
▼ Tamdeen Investment Co.	TAMI.KW	11.6	0.44	3.98%	0.16	0.300	(0.010)	103.5	0.349	0.232	7.1%	53,884	16,163	0.7%	3.8%
= Kuwait Bahrain Int'l Exchange Co.	EXCH.KW	14.6	0.61	0.00%	NA	0.086	0.000	4.0	N/A	N/A	0.0%	0	0	0.0%	4.2%
= Kuwait Syrian Holding Co.	KSHC.KW	NM	0.40	6.90%	1.52	0.044	0.000	7.7	0.082	0.027	8.7%	700	30	46.8%	NM
▼ Asiya Capital Investment Co.	ASIYA.KW	NM	0.38	0.00%	0.86	0.034	(0.000)	27.0	0.041	0.030	(0.9%)	324,653	10,925	3.0%	NM
= Gulf North Africa Holding Co.	GNAH.KW	NM	0.78	0.00%	1.65	0.054	0.000	8.1	0.057	0.044	10.2%	0	0	16.1%	NM
= Amwal International Investment Co.	AMWA.KW	13.8	0.56	0.00%	0.60	0.056	0.000	10.0	0.087	0.050	(10.3%)	0	0	0.1%	4.1%
▲ Alimtiq Investment Group	ALIMK.KW	10.1	0.77	5.68%	0.81	0.135	0.003	153.0	0.143	0.122	0.7%	2,516,547	335,260	11.4%	7.6%
= Tamkeen Holding Co.	TAMKE.KW	NM	0.12	0.00%	NA	0.011	0.000	0.8	0.015	0.003	14.1%	0	0	1.1%	NM
▲ Manazel Holding Co.	MANK.KW	NM	0.60	0.00%	1.76	0.025	0.002	10.8	0.037	0.024	1.2%	880,001	21,975	5.2%	NM
▲ National Industries Group	NIND.KW	11.6	0.86	4.97%	1.33	0.230	0.001	328.4	0.241	0.150	52.8%	8,369,378	1,924,269	44.8%	7.4%
= Warba Capital Holding Co.	WARBACAP.KW	NM	1.79	0.00%	1.17	0.085	0.000	12.8	0.090	0.019	177.8%	0	0	11.5%	NM
▲ Arabi Holding Group Co.	AGHC.KW	NM	0.58	0.00%	0.29	0.085	0.006	14.7	0.092	0.060	23.2%	20	2	2.0%	0.4%
▼ Privatization Holding Co.	KPPC.KW	NM	0.40	8.62%	1.28	0.058	(0.001)	35.4	0.065	0.015	10.5%	380,360	21,870	18.8%	NM
= Credit Rating & Collection Co.	TAHS.KW	NM	0.52	0.00%	0.07	0.018	0.000	2.9	0.024	0.018	(21.5%)	0	0	0.2%	NM
= Egypt Kuwait Holding Co.	EKHK.KW	17.5	3.21	4.40%	0.35	0.455	0.000	466.1	0.475	0.063	40.0%	0	0	0.2%	18.4%
▲ GFH Financial Group	GFH.KW	6.8	0.84	5.90%	1.16	0.073	0.001	267.7	0.113	0.066	(5.3%)	4,936,801	362,467	4.7%	12.4%
= Inovent	INOV.KW	4.9	0.51	6.86%	0.97	0.073	0.000	20.9	0.092	0.070	(8.9%)	0	0	4.0%	10.5%
= Sanad Holding Co.	SANAD.KW	66.8	1.22	0.00%	0.05	0.110	0.000	48.1	0.110	0.028	10.0%	0	0	0.0%	1.8%
= Amar For Finance and Leasing Co.	AMARF.KW	NM	0.32	0.00%	0.08	0.028	0.000	5.6	0.049	0.033	(32.2%)	0	0	0.4%	NM
= Al-Manar Financing & Leasing Co.	ALMANAR.KW	19.4	0.36	0.00%	NA	0.038	0.000	11.7	0.075	0.000	(28.9%)	145,364	5,378	8.0%	1.8%
Financial Services		11.4	0.77	4.49%				2,570.4			22.6%	48,385,332	4,256,874		6.8%

Boursa Kuwait Daily Bulletin

Tuesday, June 11, 2019

Company	Reuters Ticker	Valuation Multiples				Price (KWD)		MKT Cap (KWD Mn.)	52 Weeks High (KWD)	52 Weeks Low (KWD)	YTD-19 Return #	Daily Trading Data		YTD-19 Capital Turnover	ROE
		Trailing P/E (X)	Trailing P/BV (X)	Dividend Yield	Beta	Closing	DTD Change					Volume (Shrs.)	Value (KWD)		
= Automated Systems Co.	ASCK.KW	NM	0.73	4.15%	NA	0.096	0.000	9.6	0.139	0.066	(10.7%)	0	0	0.5%	0.5%
= Osos Holding Group Co.	OSOS.KW	7.5	0.82	9.62%	0.43	0.104	0.000	10.4	0.118	0.080	2.0%	32,506	3,269	10.9%	10.9%
▲ Hayat Communications Co.	HAYK.KW	13.8	0.46	0.00%	1.60	0.050	0.005	4.6	0.079	0.025	(26.3%)	60,000	3,009	0.6%	3.3%
Technology		13.8	0.68	5.67%				24.7			(9.6%)	92,506	6,278		5.0%

Boursa Kuwait	16.1	1.46	3.54%				34,153.2				17.7%	192,662,758	45,089,627		9.1%
----------------------	-------------	-------------	--------------	--	--	--	-----------------	--	--	--	--------------	--------------------	-------------------	--	-------------

Year-to-Date 2019 Top Movers & Most Active Stocks

YTD Top % Gainers	Close (KWD)	Percent Change
Gulf Investment House	0.058	225.3%
Warba Capital Holding Co.	0.085	177.8%
National Industries Group	0.230	52.8%
Kuwait Real Estate Co.	0.078	50.4%
National Investment Co.	0.120	45.5%

YTD Top % Losers	Close (KWD)	Percent Change
United Projects Group	0.362	(43.0%)
Combined Group Contracting Co.	0.195	(39.1%)
Yiaco Medical Co.	0.067	(37.9%)
Al Rai Media Group Co.	0.038	(37.4%)
ALAFCO Aviation Lease & Finance Co.	0.226	(35.2%)

YTD Most Active by Volume	Close (KWD)	Volume (Shrs.)
Gulf Bank	0.320	1,494,629,373
Ahli United Bank - Bahrain	0.262	1,492,078,914
A'ayan Leasing & Investment Co.	0.045	1,105,151,214
Kuwait Finance House	0.697	723,858,352
National Industries Group	0.230	639,326,748

YTD Most Active by Value	Close (KWD)	Value (KWD)
National Bank of Kuwait	0.999	527,482,333
Kuwait Finance House	0.697	474,241,088
Gulf Bank	0.320	433,293,155
Ahli United Bank - Bahrain	0.262	368,529,489
Zain	0.576	202,206,259

* Different Fiscal Year Company