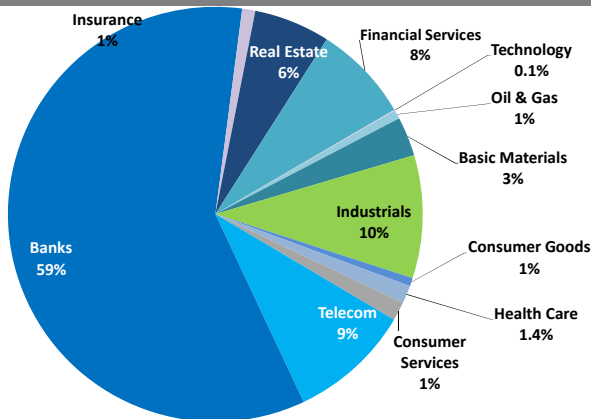


Boursa Kuwait Daily Report

June 10, 2019

Sector Weight by Market Cap



Market Capitalization - Sector Returns

	Market Cap. (KWD Mn)	DTD % Chg	MTD % Chg	YTD % Chg
Boursa Kuwait	33,943.7	▲ 0.8%	2.6%	17.0%
Oil & Gas	233.4	▼ (0.5%)	(1.0%)	2.6%
Basic Materials	1,040.0	▼ (0.3%)	0.1%	0.8%
Industrials	3,248.8	▲ 1.4%	2.9%	(4.5%)
Consumer Goods	218.2	▲ 0.4%	1.2%	6.9%
Health Care	467.1	= 0.0%	0.0%	(0.5%)
Consumer Services	504.7	▼ (0.0%)	1.9%	(1.4%)
Telecommunications	3,222.3	▲ 1.6%	6.9%	18.6%
Banks	20,056.5	▲ 0.7%	2.4%	24.6%
Insurance	345.7	▼ (1.3%)	0.3%	(4.0%)
Real Estate	2,018.4	▲ 1.2%	2.1%	8.3%
Financial Services	2,564.3	▲ 0.4%	1.4%	22.3%
Technology	24.2	▲ 0.0%	(1.1%)	(11.3%)

Top 10 Companies by Market Capitalization

Company Name	Market Cap. (Mn KWD)	P/E (X)	ROE* (%)
1- National Bank of Kuwait	6,484.8	16.9	12.5%
2- Kuwait Finance House	4,841.7	20.6	12.9%
3- Zain	2,440.5	12.0	17.3%
4- Ahli United Bank - Bahrain	2,298.9	10.5	19.3%
5- Boubayan Bank	1,675.7	28.8	14.3%
6- Agility (PWC Logistics)	1,375.1	16.7	8.0%
7- Commercial Bank of Kuwait	1,006.0	18.4	7.7%
8- Gulf Bank	975.4	16.9	9.4%
9- Burgan Bank	858.4	10.5	11.2%
10- Mabaneer Co.	756.9	14.0	12.3%
Total	22,713	15.89	12.8%

*: ROE is calculated based on TTM 1Q-2019 net profit & shareholders' equity as of 31-March-19

Top Movers and Most Active Stocks

Today's Top % Gainers	Close (KWD)	Change (KWD)	Percent Change
International Resorts Co.	0.022	0.005	26.6%
Kuwait Syrian Holding Co.	0.044	0.005	11.5%
Abyaar Real Estate Development Co.	0.014	0.001	9.4%
National Shooting Co.	0.013	0.001	6.7%
Mashaer Holding Co.	0.074	0.004	6.1%

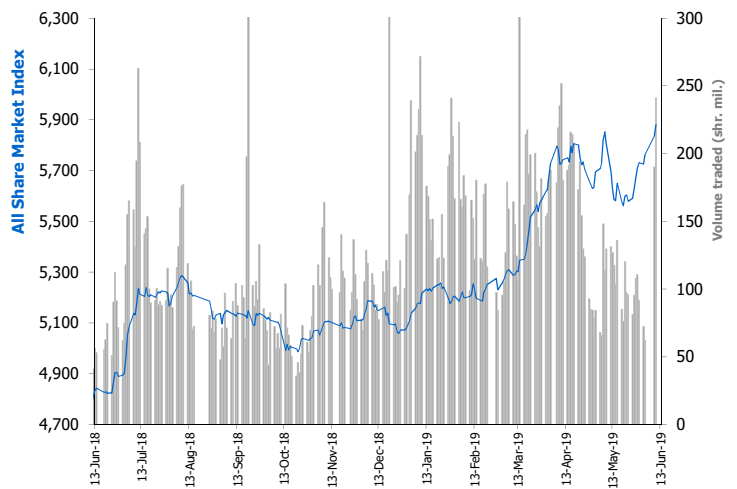
Today's Top % Losers	Close (KWD)	Change (KWD)	Percent Change
Sharjah Cement Co.	0.065	(0.012)	(15.5%)
Kuwait Real Estate Holding Co.	0.026	(0.003)	(10.0%)
Umm Al-Qaiwain General Investments Co.	0.081	(0.009)	(10.0%)
The Energy House Co.	0.025	(0.002)	(8.5%)
Salbookh Trading Co.	0.043	(0.003)	(6.5%)

Today's Most Active by Volume	Close (KWD)	Percent Change	Volume (Shares)
Ahli United Bank - Bahrain	0.262	1.2%	34,083,861
Kuwait International Bank	0.289	0.3%	16,792,835
Kuwait Finance House	0.694	0.7%	15,046,572
Gulf Bank	0.320	1.6%	13,712,627
Warba Bank	0.251	1.2%	12,688,020

Source: Boursa Kuwait, KAMCO Research

Market Breadth	63	43	69
Benchmark Return	Closing Value	DTD Chg	MTD % Chg
Premier Market Index	6,438.89	66.89	1.0%
Main Market Index	4,788.66	(4.13)	(0.1%)
All Share Market Index	5,880.94	43.74	0.7%
Market Cap (KWD Mn)	33,943.65	254.59	0.8%

Index Performance relative to Volume



Market Trading Data and Volatility

Trading Indicators	Today's Value	DTD Chg	DTD % Chg	Average Daily YTD 2019	Average Daily YTD 2018
Volume (Shrs Mn)	241.1	51.0	26.8%	155.1	73.4
Value Traded (KWD Mn)	68.6	24.5	55.5%	31.2	11.4
No. of Trades	9,656	3,242	50.5%	5,702	3,066

Today's Most Active by Value	Close (KWD)	Percent Change	Value (KWD)
Kuwait Finance House	0.694	0.7%	10,424,751
National Bank of Kuwait	0.994	0.7%	9,713,149
Ahli United Bank - Bahrain	0.262	1.2%	8,939,048
Zain	0.564	0.9%	6,742,000
Agility (PWC Logistics)	0.780	5.7%	5,408,299

Boursa Kuwait - Premier Market

Monday, June 10, 2019

Premier Market Stocks	Closing Price			Market Capitalization			Valuation Multiples				ROE	YTD-19 Price Return	YTD-19 Trading Indicators	
	KWD	DTD Chg. (KWD)	D-T-D Return	KWD Mn	Weight in Premier Index	Weight in Boursa Kuwait	P/E (X)	P/BV (X)	Yield	Beta			Volume (Mn Shrs)	Value (KWD Mn)
▲ National Bank of Kuwait	0.994	0.007	0.7%	6,485	26.0%	19.1%	16.9	2.11	3.3%	1.34	12.5%	25.1%	571.63	522.22
▲ Gulf Bank	0.320	0.005	1.6%	975	3.9%	2.9%	16.9	1.59	3.0%	0.93	9.4%	27.0%	1,488.39	431.30
▲ Kuwait International Bank	0.289	0.001	0.3%	312	1.2%	0.9%	16.1	1.16	3.3%	0.97	7.2%	13.8%	419.22	122.46
▲ Burgan Bank	0.327	0.002	0.6%	858	3.4%	2.5%	10.5	1.18	3.5%	0.99	11.2%	23.5%	296.79	96.47
▲ Kuwait Finance House	0.694	0.005	0.7%	4,842	19.4%	14.3%	20.6	2.66	2.6%	1.58	12.9%	24.9%	713.41	466.96
▲ Boubyan Bank	0.581	0.006	1.0%	1,676	6.7%	4.9%	28.8	4.12	1.1%	0.91	14.3%	25.3%	121.32	69.30
= Kuwait Projects Co. (Holding)	0.218	0.000	0.0%	337	1.4%	1.0%	11.6	1.23	5.4%	0.77	10.7%	4.8%	66.57	13.97
▲ Mabanee Co.	0.726	0.016	2.3%	757	3.0%	2.2%	14.0	1.72	1.6%	1.03	12.3%	27.0%	79.52	51.33
▲ National Industries Group (Holding)	0.229	0.004	1.8%	327	1.3%	1.0%	11.5	0.86	5.0%	1.33	7.4%	52.2%	630.96	128.79
▼ Boubyan Petrochemical Co.	0.940	(0.008)	(0.8%)	503	2.0%	1.5%	47.7	1.73	4.7%	0.75	3.6%	(3.6%)	27.64	26.06
= Qurain Petrochemicals Industries Co.	0.377	0.000	0.0%	414	1.7%	1.2%	9.1	1.07	4.0%	0.68	11.7%	4.7%	48.89	18.64
▲ Agility Public Warehousing Co.	0.780	0.042	5.7%	1,375	5.5%	4.1%	16.7	1.33	1.6%	1.50	8.0%	11.8%	139.53	111.02
▲ Mobile Telecommunications Co.	0.564	0.005	0.9%	2,440	9.8%	7.2%	12.0	2.08	5.3%	1.65	17.3%	25.6%	409.71	196.59
▼ Human Soft Holding Co.	3.330	(0.100)	(2.9%)	407	1.6%	1.2%	12.6	5.37	5.5%	0.41	42.7%	1.5%	15.09	48.71
▲ GFH Financial Group (B.S.C)	0.072	0.002	2.7%	263	1.1%	0.8%	6.7	0.83	6.0%	1.15	12.4%	(6.9%)	168.58	12.96
▲ Ahli United Bank (B.S.C)	0.262	0.003	1.2%	2,299	9.2%	6.8%	10.5	2.03	4.4%	0.77	19.3%	42.7%	1,476.09	364.34
▲ Warba Bank	0.251	0.003	1.2%	377	1.5%	1.1%	27.6	1.88	0.0%	0.90	6.8%	19.5%	377.10	88.16
▲ Mezzan Holding Co.	0.538	0.003	0.6%	167	0.7%	0.5%	21.6	1.51	2.9%	0.57	7.0%	7.6%	30.73	14.26
▲ Integrated Holding Co.	0.600	0.008	1.4%	132	0.5%	0.4%	8.6	1.90	6.7%	0.20	22.0%	(28.6%)	27.85	20.26
Subtotal- Premier Market Stocks	5,880.94	43.74	0.75%	24,947	100%	73%	15.4	1.95	3.29%		12.6%	15.8%	7,109.02	2,803.80
Remaining of the Market				8,997		27%	17.6	0.85	4.30%		4.8%		9,485.66	537.10

Boursa Kuwait Daily Bulletin

Monday, June 10, 2019

Company	Reuters Ticker	Valuation Multiples				Price (KWD)		MKT Cap (KWD Mn.)	52 Weeks High (KWD)	52 Weeks Low (KWD)	YTD-19 Return #	Daily Trading Data		YTD-19	ROE
		Trailing P/E (X)	Trailing P/BV (X)	Dividend Yield	Beta	Closing	DTD Change					Volume (Shrs.)	Value (KWD)	Capital Turnover	
= Senergy Holding Co.	SENE.KW	NM	0.30	0.00%	1.39	0.022	0.000	4.4	0.037	0.021	(28.9%)	6,323	138	3.6%	NM
▲ Independent Petroleum Group	IPGK.KW	12.4	0.85	5.54%	0.31	0.416	0.001	78.4	0.450	0.379	3.7%	18,475	7,675	2.3%	6.9%
= National Petroleum Services Co.	NAPS.KW	8.1	3.05	7.00%	0.19	0.970	0.000	97.0	1.170	0.731	5.4%	0	0	0.6%	37.5%
▼ The Energy House Co.	ENER.KW	NM	0.70	0.00%	0.91	0.025	(0.002)	18.5	0.051	0.025	(32.0%)	319,000	7,996	2.2%	NM
▲ Gulf Petroleum Investment	GPIK.KW	NM	0.26	0.00%	1.24	0.025	0.001	11.2	0.033	0.021	(16.9%)	3,600,738	86,857	111.1%	NM
= Burgan Co. for Drilling, Tdg. & Maint. *	ABAR.KW	7.7	0.38	0.00%	NA	0.099	0.000	24.0	0.123	0.080	4.2%	0	0	0.4%	4.9%
Oil & Gas		14.8	0.86	4.77%				233.4			2.6%	3,944,536	102,667		5.8%
▲ Kuwait Foundry Co.	KFDC.KW	31.9	0.85	3.23%	0.43	0.248	0.006	38.2	0.289	0.175	29.8%	15,000	3,705	12.8%	2.7%
▼ Boubyan Petrochemicals Co.*	BPCC.KW	47.7	1.73	4.66%	0.75	0.940	(0.008)	502.7	1.090	0.780	(3.6%)	539,800	509,356	5.2%	3.6%
= Al Kout for Industrial Projects Co.	ALKK.KW	13.5	2.72	5.95%	0.05	0.840	0.000	84.8	0.840	0.362	0.0%	0	0	0.0%	20.2%
= Qurain Petrochemical Industries Co. *	ALQK.KW	9.1	1.07	4.02%	0.68	0.377	0.000	414.4	0.415	0.321	4.7%	625,187	234,661	4.4%	11.7%
Basic Materials		16.4	1.38	4.45%				1,040.0			0.8%	1,179,987	747,721		8.4%
▼ Specialities Group Holding Co.	SPEC.KW	6.9	0.37	0.00%	0.36	0.069	(0.003)	10.4	0.082	0.057	1.0%	1,718,448	117,664	14.2%	5.4%
▼ Kuwait Cement Co.	KCEM.KW	33.2	1.06	5.03%	0.46	0.290	(0.010)	212.7	0.422	0.327	(23.5%)	162	47	0.3%	3.2%
▲ Gulf Cable & Electrical Ind. Co.	CABL.KW	7.6	0.51	6.84%	1.03	0.395	0.006	82.9	0.420	0.346	12.5%	681,556	270,239	8.7%	6.7%
= Heavy Eng'g Ind. & Shipbuilding Co.	SHIP.KW	6.6	1.17	7.85%	0.48	0.382	0.000	68.9	0.538	0.307	(11.6%)	422,828	161,997	18.4%	17.7%
▲ Kuwait Portland Cement Co.	PCEM.KW	11.7	1.65	8.13%	0.50	1.230	0.009	123.3	1.459	0.149	8.1%	132,598	163,045	6.2%	14.0%
= Shuaiba Industrial Co.	PAPE.KW	20.6	0.89	5.97%	0.17	0.165	0.000	16.6	0.249	0.012	(12.2%)	0	0	0.2%	4.3%
= Metal & Recycling Co.	MRCK.KW	NM	0.56	0.00%	0.02	0.070	0.000	7.0	0.089	0.012	11.1%	0	0	0.1%	NM
▲ ACICO Industries Co.	ACIC.KW	46.2	0.43	3.61%	0.43	0.138	0.002	43.8	0.245	0.150	(17.4%)	10,697	1,436	3.9%	0.9%
= Hilal Cement Co.	HCKK.KW	17.3	0.84	0.00%	0.13	0.122	0.000	12.4	0.146	0.067	8.9%	0	0	0.7%	4.9%
= National Industries Co.	NIBM.KW	15.2	0.83	5.12%	0.19	0.188	0.000	67.7	0.202	0.160	(6.0%)	60,000	11,280	0.5%	5.5%
▼ Equipment Holding Co.	EQUI.KW	NM	0.48	0.00%	1.35	0.022	(0.002)	2.9	0.034	0.025	(20.4%)	451,500	9,847	20.3%	NM
= National Co. for Consumer Industries	NCCI.KW	27.3	0.33	0.00%	NA	0.030	0.000	2.7	0.084	0.035	(31.8%)	0	0	0.4%	1.2%
▼ Salbookh Trading Co.	SALB.KW	NM	0.51	0.00%	0.75	0.043	(0.003)	4.5	0.052	0.036	7.8%	501,846	22,208	30.4%	NM
▲ Agility (PWC Logistics)	AGLT.KW	16.7	1.33	1.58%	1.50	0.780	0.042	1,375.1	0.943	0.315	11.8%	7,066,881	5,408,299	7.9%	8.0%
= Educational Holding Group*	EDUK.KW	12.0	1.94	4.69%	0.17	0.320	0.000	78.5	0.340	0.056	3.2%	0	0	0.5%	16.2%
▲ National Cleaning Co.	CLEA.KW	10.5	0.45	7.39%	0.94	0.066	0.001	16.4	0.072	0.048	14.5%	6,026	378	5.2%	4.3%
▲ Kuwait & Gulf Link Transport Co.	KGLK.KW	8.9	0.35	5.77%	0.94	0.082	0.004	22.9	0.128	0.090	(13.9%)	46,026	3,592	13.1%	3.9%
▲ Kuwait Co. For Process Plant Const. & Cont.	KPCP.KW	5.4	0.87	8.91%	0.34	0.217	0.002	21.8	0.260	0.159	(5.7%)	11,805	2,361	1.8%	16.1%
▼ Humansoft Holding Co.	HUMN.KW	12.6	5.37	5.53%	0.41	3.330	(0.100)	407.0	3.800	2.996	1.5%	84,665	287,768	12.3%	42.7%
= Gulf Franchising Co.	GFCI.KW	NM	0.60	0.00%	NA	0.051	0.000	2.0	0.250	0.011	(27.1%)	0	0	0.0%	NM
▲ National Shooting Co.	SHOOTING.KW	NM	0.18	0.00%	1.77	0.013	0.001	3.6	0.021	0.015	(20.0%)	1,802,540	21,687	12.3%	NM
▲ Combined Group Contracting Co.	CGCK.KW	6.1	0.67	9.97%	0.00	0.200	0.002	32.7	0.430	0.295	(37.5%)	183,035	36,237	7.4%	11.0%
= United Projects Group	UPAC.KW	7.7	1.01	3.64%	0.05	0.445	0.000	73.2	0.690	0.217	(29.9%)	0	0	0.4%	13.2%
▼ ALAFCO Aviation Lease & Finance Co.*	ALAF.KW	12.8	0.69	4.37%	0.37	0.229	(0.003)	218.0	0.372	0.054	(34.4%)	3,743,350	860,891	3.3%	5.4%
▼ Mubarrad Holding Co.	MBRD.KW	5.9	0.47	8.46%	0.86	0.058	(0.001)	9.5	0.080	0.040	(10.6%)	55,975	3,246	32.2%	8.0%
▼ KGL Logistics Co.	LOGK.KW	5.5	0.31	0.00%	0.82	0.042	(0.001)	30.7	0.046	0.040	3.5%	4,959,918	208,143	29.3%	5.6%
▲ Integrated holding Co.	INTEGRATED.KW	8.6	1.90	6.67%	0.20	0.600	0.008	132.0	0.970	0.720	(28.6%)	383,563	232,118	12.7%	22.0%
▼ Sharjah Cement Co.	SCEM.KW	26.5	0.34	12.31%	0.46	0.065	(0.012)	39.5	0.087	0.054	(25.2%)	10,010	694	0.2%	1.3%
▼ Gulf Cement Co.	GCEM.KW	NM	0.58	12.97%	0.45	0.062	(0.003)	50.7	0.084	0.058	(9.1%)	63,650	3,871	0.5%	NM
▼ Umm Al-Qaiwain General Investments Co.	QIC.KW	18.0	0.51	8.64%	0.20	0.081	(0.009)	29.4	0.091	0.044	21.8%	61,000	4,932	0.5%	2.8%
▲ Fujairah Cement Industries Co.	FCEM.KW	32.1	0.22	11.11%	0.55	0.054	0.000	19.2	0.073	0.055	(15.0%)	50,000	2,694	6.0%	0.7%
= Ras-Al-Khaimah for White Cement Co.	RKWC.KW	26.0	0.49	8.13%	0.19	0.062	0.000	30.8	0.087	0.059	(17.9%)	0	0	0.3%	1.9%
Industrials		14.3	1.04	4.12%				3,248.8			(4.5%)	22,508,079	7,834,673		7.3%

Boursa Kuwait Daily Bulletin

Monday, June 10, 2019

Company	Reuters Ticker	Valuation Multiples				Price (KWD)		MKT Cap (KWD Mn.)	52 Weeks High (KWD)	52 Weeks Low (KWD)	YTD-19 Return #	Daily Trading Data		YTD-19 Capital Turnover	ROE
		Trailing P/E (X)	Trailing P/BV (X)	Dividend Yield	Beta	Closing	DTD Change					Volume (Shrs.)	Value (KWD)		
= Palms Agro Production Co.	PAPK.KW	NM	0.53	13.31%	0.31	0.075	0.000	3.9	0.080	0.037	25.0%	0	0	0.8%	NM
= Livestock Transport & Trading Co.	CATT.KW	NM	1.10	2.40%	0.39	0.201	0.000	43.5	0.259	0.026	6.9%	0	0	1.2%	NM
▼ Danah Alsafat Foodstuff Co.	DANK.KW	NM	0.30	0.00%	0.52	0.027	(0.001)	3.2	0.053	0.036	(30.2%)	625,471	16,961	16.5%	NM
▲ Mezzan Holding Co.	MEZZ.KW	21.6	1.51	2.92%	0.57	0.538	0.003	167.5	0.771	0.431	7.6%	227,354	121,483	9.9%	7.0%
Consumer Goods		54.9	1.29	2.96%				218.2			6.9%	852,825	138,444		2.4%
= Advanced Technology Co.	ATCK.KW	28.5	2.52	1.50%	NA	1.000	0.000	150.0	1.000	0.067	0.0%	0	0	0.0%	8.8%
= Yiacco Medical Co.	YIAC.KW	NM	13.64	0.00%	0.61	0.067	0.000	12.1	0.139	0.080	(37.9%)	0	0	0.0%	NM
= Al-Maidan Clinic For Oral Health Services Co.	MIDAN.KW	53.0	8.69	0.41%	0.01	1.220	0.000	305.0	1.260	1.080	1.7%	0	0	0.1%	16.4%
Health Care		NM	4.90	0.75%				467.1			(0.5%)	0	0		3.2%
▼ Kuwait National Cinema Co.	KCIN.KW	11.8	1.18	5.18%	0.16	0.890	(0.020)	89.9	1.090	0.830	(16.7%)	2,500	2,225	0.1%	10.0%
= Kuwait Hotels Co.	KHOT.KW	NM	1.15	0.00%	NA	0.100	0.000	5.8	0.130	0.046	(23.1%)	0	0	0.0%	NM
▲ Sultan Center Food Products Co.	SCFK.KW	12.5	0.64	0.00%	0.69	0.049	0.001	28.1	0.076	0.013	(8.1%)	1,398,885	68,159	9.7%	5.1%
▼ Kuwait Cable Vision Co.	KWTV.KW	NM	0.75	0.00%	0.33	0.020	(0.005)	0.7	0.033	0.008	0.5%	5,000	101	1.9%	NM
▼ IFA Hotels & Resorts Co.*	IFAH.KW	NM	1.12	0.00%	0.14	0.065	(0.000)	41.2	0.110	0.054	(27.1%)	1,671	104	0.3%	NM
▲ Oula Fuel Marketing Co.	OULA.KW	13.0	0.73	4.00%	0.45	0.123	0.003	49.8	0.136	0.052	4.2%	16,544	1,987	2.5%	5.6%
▲ Kuwait Resorts Co.	MUNK.KW	8.0	0.38	9.36%	0.71	0.053	0.001	10.5	0.067	0.052	(5.2%)	102,600	5,432	37.1%	4.8%
= Jazeera Airways Co.	JAZK.KW	22.0	5.55	3.76%	0.28	0.930	0.000	186.0	0.935	0.114	27.4%	67,377	62,631	6.2%	25.2%
= Soor Fuel Marketing Co.	SOOR.KW	14.3	0.73	4.16%	0.39	0.119	0.000	48.2	0.139	0.110	3.5%	27,889	3,344	2.6%	5.1%
= Future Kid Entertainment and R.E Co.	KIDK.KW	10.8	0.51	13.15%	NA	0.090	0.000	10.5	0.135	0.088	(5.3%)	0	0	2.6%	4.7%
▲ Al Rai Media Group Co.	ALRA.KW	NM	0.69	NM	0.58	0.041	0.001	9.6	0.109	0.047	(32.8%)	450	18	3.5%	NM
▲ Jiyad Holding Co	JIYAD.KW	15.5	0.50	0.00%	0.70	0.055	0.000	19.2	0.103	0.064	(23.4%)	377,670	20,674	37.0%	3.2%
= Al Eid Food Co.	ALEID.KW	3.7	0.32	0.00%	0.00	0.053	0.000	5.3	0.077	0.052	(19.7%)	0	0	1.1%	8.5%
Consumer Services		NM	1.13	4.68%				504.7			(1.4%)	2,000,586	164,674		NM
▲ Zain	ZAIN.KW	12.0	2.08	5.32%	1.65	0.564	0.005	2,440.5	0.568	0.385	25.6%	12,012,496	6,742,000	9.5%	17.3%
▲ National Mobile Telecom Co.	OORE.KW	11.8	0.65	7.23%	0.50	0.688	0.027	346.8	0.889	0.010	(3.6%)	153,810	103,469	0.6%	5.5%
▲ AAN digital services Co.	AAN.KW	NM	0.35	0.00%	1.63	0.012	0.001	10.0	0.022	0.016	(33.9%)	1,879,397	20,987	16.4%	NM
▲ Kuwait Telecommunication Co.	VIVA.KW	8.8	2.34	4.70%	0.75	0.851	0.031	425.0	0.899	0.685	6.4%	49,276	41,524	0.9%	26.7%
Telecommunications		11.5	1.68	5.43%				3,222.3			18.6%	14,094,979	6,907,980		14.6%
▲ National Bank of Kuwait	NBKK.KW	16.9	2.11	3.31%	1.34	0.994	0.007	6,484.8	1.000	0.270	25.1%	9,740,592	9,713,149	8.8%	12.5%
▲ Gulf Bank	GBKK.KW	16.9	1.59	2.97%	0.93	0.320	0.005	975.4	0.330	0.233	27.0%	13,712,627	4,388,518	48.8%	9.4%
▼ Commercial Bank of Kuwait	CBKK.KW	18.4	1.41	3.58%	0.70	0.505	(0.014)	1,006.0	0.700	0.299	11.1%	4	2	0.7%	7.7%
= Ahli Bank of Kuwait	ABKK.KW	11.5	0.88	4.41%	0.61	0.315	0.000	510.0	0.350	0.284	6.8%	64,499	20,272	1.0%	7.7%
▲ Ahli United Bank - Kuwait	BKME.KW	12.5	1.54	4.08%	0.76	0.315	0.006	649.8	0.369	0.248	11.4%	1,862,162	587,470	3.7%	12.3%
▲ Kuwait International Bank	KIBK.KW	16.1	1.16	3.29%	0.97	0.289	0.001	311.8	0.343	0.217	13.8%	16,792,835	4,859,336	38.9%	7.2%
▲ Burgan Bank	BURG.KW	10.5	1.18	3.49%	0.99	0.327	0.002	858.4	0.405	0.245	23.5%	2,394,300	782,814	11.3%	11.2%
▲ Kuwait Finance House	KFH.KW	20.6	2.66	2.59%	1.58	0.694	0.005	4,841.7	0.718	0.511	24.9%	15,046,572	10,424,751	10.2%	12.9%
▲ Boubyan Bank	BOUK.KW	28.8	4.12	1.14%	0.91	0.581	0.006	1,675.7	0.630	0.215	25.3%	3,590,054	2,082,663	4.2%	14.3%
▲ Warba Bank	WARB.KW	27.6	1.88	0.00%	0.90	0.251	0.003	376.5	0.265	0.205	19.5%	12,688,020	3,179,178	25.1%	6.8%
▲ Ahli United Bank - Bahrain	AUBK.KW	10.5	2.03	4.43%	0.77	0.262	0.003	2,298.9	0.277	0.019	42.7%	34,083,861	8,939,048	16.8%	19.3%
= Ithmaar Bank	ITHMR.KW	NM	1.84	0.00%	1.50	0.022	0.000	67.6	0.038	0.024	(10.8%)	0	0	4.9%	NM
Banks		16.5	2.01	3.07%				20,056.5			24.6%	109,975,526	44,977,203		12.1%

Boursa Kuwait Daily Bulletin

Monday, June 10, 2019

Company	Reuters Ticker	Valuation Multiples				Price (KWD)		MKT Cap (KWD Mn.)	52 Weeks High (KWD)	52 Weeks Low (KWD)	YTD-19 Return #	Daily Trading Data		YTD-19	
		Trailing P/E (X)	Trailing P/BV (X)	Dividend Yield	Beta	Closing	DTD Change					Volume (Shrs.)	Value (KWD)	Capital Turnover	ROE
= Kuwait Insurance Co.	KINS.KW	7.1	0.80	6.61%	0.03	0.360	0.000	69.9	0.427	0.275	0.0%	700	252	1.5%	11.3%
▼ Gulf Insurance Group	GINS.KW	9.4	1.37	5.56%	0.05	0.620	(0.005)	116.0	0.730	0.401	(5.3%)	5,973	3,696	0.1%	14.6%
▼ Ahleiah Insurance Co.	AINS.KW	8.6	0.85	8.17%	0.20	0.421	(0.009)	84.2	0.450	0.056	(1.4%)	1,690	711	1.5%	9.8%
= Warba Insurance Co.	WINS.KW	11.2	0.31	0.00%	0.59	0.070	0.000	12.1	0.092	0.055	6.1%	10,657	744	1.3%	2.8%
▼ Kuwait Reinsurance Co.	KWRE.KW	6.9	0.54	3.23%	NA	0.145	(0.010)	27.4	0.198	0.037	(21.2%)	2,710	393	0.3%	7.9%
= First Takaful Insurance Co.	FTIK.KW	6.6	0.50	0.00%	0.11	0.044	0.000	4.6	0.053	0.027	(1.4%)	0	0	1.4%	7.6%
= Wethaq Takaful Insurance Co.	WETH.KW	43.3	0.25	0.00%	0.69	0.027	0.000	3.0	0.045	0.024	(3.2%)	0	0	14.8%	0.6%
= Bahrain Kuwait Insurance Co.	BKIK.KW	12.2	1.03	12.50%	0.04	0.200	0.000	28.6	0.200	0.200	0.0%	0	0	0.0%	8.4%
Insurance		8.6	0.84	6.48%				345.7			(4.0%)	21,730	5,796		9.8%
= Sokouk Holding Co.	SHCK.KW	NM	0.39	0.00%	1.44	0.032	0.000	19.0	0.052	0.038	(19.0%)	1,901,216	59,805	27.5%	NM
▲ Kuwait Real Estate Co.	KREK.KW	8.9	0.53	0.00%	1.35	0.076	0.000	72.4	0.079	0.044	47.3%	8,546,600	655,188	49.7%	5.9%
▲ United Real Estate Co.	UREK.KW	NM	0.37	0.00%	0.64	0.060	0.002	71.2	0.070	0.057	(0.2%)	47,701	2,711	0.3%	NM
▲ National Real Estate Co.	NREK.KW	10.0	0.40	0.00%	1.33	0.076	0.002	104.0	0.124	0.080	(16.0%)	1,511,046	115,291	6.8%	4.0%
= Salhia Real Estate Co.	SREK.KW	11.1	1.12	5.69%	0.31	0.339	0.000	173.8	0.350	0.324	2.7%	524,033	174,252	3.0%	10.1%
= Tamdeen Real Estate Co.	TAMK.KW	26.8	0.98	2.49%	0.27	0.390	0.000	168.5	0.400	0.126	11.4%	0	0	0.4%	3.7%
= Ajial Real Estate Entertainment Co.	AREC.KW	10.8	0.20	3.80%	0.38	0.131	0.000	24.3	0.159	0.032	(3.0%)	78,000	10,208	2.2%	1.8%
= Al Massaleh Real Estate Co.	MREC.KW	NM	0.39	0.00%	0.46	0.037	0.000	8.7	0.049	0.027	1.1%	0	0	3.4%	NM
▼ Arab Real Estate Co.	ARAB.KW	NM	0.27	0.00%	1.39	0.031	(0.001)	15.8	0.035	0.027	7.3%	122,100	3,825	12.8%	NM
▲ AL-Enma'a Real Estate Co.*	ENMA.KW	NM	0.38	0.00%	0.79	0.037	0.000	16.8	0.048	0.030	14.4%	1,177,965	42,499	36.5%	NM
▲ Mabaneer Co.	MABK.KW	14.0	1.72	1.55%	1.03	0.726	0.016	756.9	0.729	0.076	27.0%	1,671,804	1,201,003	7.6%	12.3%
= Injazzat Real Estate Development Co.	INJA.KW	7.0	0.48	8.12%	0.51	0.084	0.000	29.0	0.090	0.009	(2.3%)	0	0	1.7%	6.9%
▲ Investors Holding Group Co.	INVK.KW	NM	0.27	0.00%	1.61	0.010	0.000	6.4	0.016	0.012	(16.4%)	5,007,054	50,888	93.0%	NM
▲ International Resorts Co.	IRCK.KW	6.3	0.37	0.00%	1.48	0.022	0.005	3.5	0.030	0.018	0.0%	105,187	2,060	1.2%	5.8%
= The Commercial Real Estate Co.	TIJK.KW	11.7	0.55	5.43%	0.80	0.093	0.000	163.0	0.098	0.030	1.1%	816,500	75,167	6.3%	4.7%
= Sanam Real Estate Co.	SANK.KW	NM	0.62	0.00%	0.47	0.050	0.000	6.0	0.063	0.026	42.7%	0	0	2.8%	NM
▲ A'ayan Real Estate Co.	AYRE.KW	3.7	0.33	8.57%	0.88	0.058	0.001	23.9	0.068	0.045	(0.2%)	69,295	3,932	10.8%	8.9%
= Aqar Real Estate Investment Co.	AQAR.KW	11.9	0.56	6.96%	NA	0.065	0.000	15.2	0.071	0.023	6.2%	0	0	0.4%	4.7%
▼ Kuwait Real Estate Holding Co.	ALAQ.KW	38.2	0.46	0.00%	1.05	0.026	(0.003)	5.0	0.035	0.020	4.4%	1,000	26	1.8%	1.2%
▼ MAZAYA Holding Co.	MAZA.KW	8.5	0.44	13.52%	1.39	0.059	(0.000)	40.6	0.094	0.070	(15.8%)	3,393,048	200,395	35.2%	5.2%
= Tijara Real Estate & Investment Co.	TIJA.KW	17.4	0.46	4.15%	0.69	0.048	0.000	17.8	0.057	0.025	(1.6%)	0	0	0.6%	2.6%
▼ Al TAMEER Real Estate Investment Co.	AMAR.KW	NM	0.43	0.00%	1.41	0.030	(0.001)	7.1	0.046	0.026	5.7%	1,091,346	33,297	108.9%	NM
▲ Arkan Al-Kuwait Real Estate Co. *	ARKK.KW	16.2	0.55	10.32%	0.34	0.078	0.002	19.5	0.091	0.072	(7.2%)	13,700	1,062	1.7%	3.4%
= Al-Argan International Real Estate Co.	ARGK.KW	NM	0.52	2.74%	0.40	0.176	0.000	46.6	0.176	0.012	29.4%	0	0	0.1%	0.6%
▲ Abyaar Real Estate Development Co.	ABYR.KW	NM	0.18	0.00%	1.56	0.014	0.001	15.4	0.020	0.015	(8.6%)	6,609,710	91,338	55.1%	NM
▼ Munshaat Real Estate Projects Co.	MUNS.KW	NM	0.57	0.00%	1.06	0.080	(0.003)	25.8	0.120	0.027	(20.0%)	49,030	3,922	3.1%	NM
▲ First Dubai For Real Estate Development	FIRST.KW	20.2	0.43	0.00%	1.58	0.032	0.001	31.9	0.047	0.035	(15.4%)	8,077	256	3.8%	2.1%
▼ Kuwait Business Town Real Estate Co.	KBTK.KW	8.7	0.37	7.27%	1.36	0.039	(0.002)	24.7	0.054	0.042	(8.7%)	317,900	12,570	4.3%	4.2%
= Real Estate Asset Management Co.	REAM.KW	28.0	1.30	2.91%	0.01	0.171	0.000	17.9	1.415	0.033	(5.0%)	0	0	0.0%	4.7%
▼ MENA Real Estate Co. *	MENK.KW	2.6	0.46	0.00%	0.94	0.036	(0.000)	5.0	0.050	0.017	1.7%	555,369	20,168	170.5%	17.6%
▼ Al Mudon International Real Estate Co.	ALMK.KW	NM	0.13	0.00%	1.37	0.018	(0.000)	1.8	0.032	0.020	(37.5%)	129,350	2,350	13.6%	NM
▼ Real Estate Trade Centers Co.	MARA.KW	NM	0.14	0.00%	0.44	0.024	(0.001)	3.2	0.037	0.018	6.8%	51,840	1,131	21.4%	0.0%
▼ Kuwait Remal Real Estate Co.	REMA.KW	NM	0.40	0.00%	1.01	0.030	(0.002)	9.2	0.050	0.029	(28.6%)	455,697	13,780	36.6%	NM
▲ Mashaer Holding Co.	MASHAER.KW	NM	0.61	0.00%	0.28	0.074	0.004	13.3	0.088	0.015	(11.2%)	660,403	46,765	131.0%	NM
= Effect Real Estate Co.	EFFECT.KW	NM	0.28	0.00%	0.82	0.020	0.000	1.6	0.025	0.009	119.8%	0	0	12.7%	NM
▼ Ajwan Gulf Real Estate Co.	AJWN.KW	NM	0.26	0.00%	0.46	0.015	(0.000)	3.1	0.025	0.017	(19.2%)	1,799,993	25,631	55.2%	NM
= Al Masaken Intl. Real Estate Dev. Co.	MASKN.KW	NM	0.83	0.00%	0.36	0.070	0.000	7.0	0.100	0.036	12.0%	0	0	0.2%	NM
= Dalqan Real Estate Co.	DALQ.KW	NM	2.76	0.00%	NA	0.350	0.000	17.5	0.350	0.179	0.0%	0	0	0.0%	2.2%
= Dar Al Thuraya Real Estate Co.	THURY.KW	26.1	1.74	0.00%	NA	0.179	0.000	26.2	0.220	0.220	(18.6%)	0	0	0.0%	6.7%
Real Estate		30.1	0.71	2.62%				2,018.4			8.3%	36,714,964	2,849,518		2.3%

Boursa Kuwait Daily Bulletin

Monday, June 10, 2019

Company	Reuters Ticker	Valuation Multiples				Price (KWD)		MKT Cap (KWD Mn.)	52 Weeks High (KWD)	52 Weeks Low (KWD)	YTD-19 Return #	Daily Trading Data		YTD-19	
		Trailing P/E (X)	Trailing P/BV (X)	Dividend Yield	Beta	Closing	DTD Change					Volume (Shrs.)	Value (KWD)	Capital Turnover	ROE
▲ Kuwait Investment Co.	KINV.KW	5.0	0.58	8.08%	0.60	0.123	0.001	67.8	0.139	0.107	(5.4%)	1,617,000	199,808	8.7%	11.7%
▼ Commercial Facilities Co.	FACI.KW	10.4	0.66	8.13%	0.58	0.198	(0.002)	106.3	0.211	0.021	13.1%	66,600	13,188	2.8%	6.3%
= Int'l Financial Advisors Co.	IFIN.KW	NM	0.70	0.00%	1.61	0.023	0.000	16.6	0.039	0.021	(18.1%)	0	0	24.4%	NM
▲ National Investment Co.	NINV.KW	11.1	0.57	5.31%	1.31	0.120	0.002	105.1	0.123	0.070	45.5%	5,193,549	622,678	17.2%	5.2%
= Kuwait Projects Co.(Holding)	KPRO.KW	11.6	1.23	5.39%	0.77	0.218	0.000	337.3	0.252	0.033	4.8%	1,132,617	246,914	4.3%	10.7%
▼ Coast Invest. & Development Co.	COAS.KW	15.4	0.43	0.00%	1.96	0.038	(0.000)	23.5	0.045	0.028	13.3%	147,678	5,429	9.3%	2.8%
▼ The Securities House Co.	SECH.KW	NM	0.52	0.00%	1.29	0.048	(0.000)	21.6	0.062	0.045	(9.4%)	759,570	36,243	39.8%	0.2%
▲ Arzan Financial Group For Fin. & Invest.	ARZA.KW	6.6	0.26	0.00%	1.14	0.033	0.001	26.4	0.038	0.025	10.4%	1,684,390	55,753	15.3%	3.9%
▼ Kuwait Financial Centre	MARKZ.KW	9.9	0.44	5.75%	0.65	0.087	(0.003)	41.8	0.110	0.032	(13.0%)	35,000	3,045	0.9%	4.4%
= Kuwait & M.E. Financial Inv. Co.	KMEF.KW	31.1	0.61	0.00%	0.72	0.036	0.000	9.5	0.054	0.019	12.5%	0	0	13.5%	2.0%
▼ Al-Aman Investment Co.	AMAN.KW	9.6	0.52	0.00%	0.80	0.058	(0.002)	8.7	0.081	0.034	19.7%	159,807	9,325	69.1%	5.4%
▲ First Investment Co.	OLAK.KW	12.6	0.27	0.00%	0.97	0.039	0.001	25.2	0.045	0.016	(2.3%)	4,967,645	191,699	80.1%	2.2%
▼ Al-Mal Investment Co.	MALK.KW	NM	0.57	0.00%	1.64	0.016	(0.001)	5.0	0.025	0.017	(15.7%)	1,034,001	16,777	18.0%	NM
▲ Gulf Investment House	GIHK.KW	1.7	0.64	0.00%	1.11	0.058	0.001	23.4	0.083	0.014	223.0%	224,344	12,885	8.8%	37.0%
▲ A'ayan Leasing & Investment Co.	AAYA.KW	NM	0.45	0.00%	1.38	0.043	0.001	35.2	0.056	0.029	16.1%	5,403,660	232,089	134.7%	NM
▲ Bayan Investment Co.	BAYK.KW	NM	0.42	0.00%	1.61	0.040	0.001	15.7	0.052	0.034	(17.2%)	49,248	1,921	3.0%	NM
= Osoul Investment Co.	OSUL.KW	8.4	0.55	8.69%	0.47	0.064	0.000	12.1	0.064	0.050	5.6%	0	0	1.9%	6.6%
▼ Kuwait Finance & Investment Co.	KFSK.KW	34.0	0.29	0.00%	0.45	0.035	(0.001)	11.3	0.049	0.033	3.2%	125,050	4,419	10.8%	0.9%
= KAMCO Investment Co.	KAMC.KW	6.4	0.54	0.00%	0.14	0.074	0.000	19.5	0.091	0.062	7.5%	0	0	1.4%	8.4%
▼ National International Holding Co.	NIHK.KW	6.9	0.40	6.20%	0.95	0.075	(0.000)	16.2	0.081	0.050	20.2%	103,650	7,723	5.1%	5.8%
▲ UniCap Investment and Finance	UNICAP.KW	9.5	0.53	5.72%	0.72	0.052	0.001	12.5	0.085	0.050	(34.2%)	701,414	35,790	16.8%	5.6%
▼ Al Madar Finance & Investment Co.	MADR.KW	2.0	1.35	0.00%	0.42	0.135	(0.002)	28.9	0.180	0.011	(19.2%)	1,218,794	160,504	40.2%	68.6%
▼ Al-Deera Holding	DEER.KW	3.1	0.45	0.00%	1.54	0.014	(0.000)	2.7	0.026	0.016	(26.5%)	477,732	6,083	4.7%	14.4%
▲ Al Salam Group Holding Co.	SAGH.KW	NM	0.31	0.00%	1.61	0.036	0.001	9.7	0.040	0.016	12.1%	2,544,229	90,760	39.6%	NM
▲ Ektttab Holding Co.	EKTT.KW	NM	0.36	0.00%	1.26	0.018	0.001	5.7	0.029	0.019	(14.4%)	2,087	35	9.0%	NM
▲ Al Madina For Finance & Investment Co.	MADI.KW	NM	0.59	0.00%	1.28	0.021	0.000	8.3	0.030	0.020	0.0%	4,466,547	91,285	83.1%	NM
▲ NOOR Financial Investment Co.	NOOR.KW	1.5	0.60	5.70%	0.74	0.088	0.000	36.2	0.095	0.050	13.8%	229,085	19,869	37.5%	41.3%
▼ Tamdeen Investment Co.	TAMI.KW	12.0	0.45	3.85%	0.16	0.310	(0.021)	107.0	0.349	0.232	10.7%	2,011	616	0.7%	3.8%
= Kuwait Bahrain Int'l Exchange Co.	EXCH.KW	14.6	0.61	0.00%	NA	0.086	0.000	4.0	N/A	N/A	0.0%	0	0	0.0%	4.2%
▲ Kuwait Syrian Holding Co.	KSHC.KW	NM	0.40	6.90%	1.52	0.044	0.005	7.7	0.082	0.027	8.7%	65,806	2,667	46.8%	NM
= Asiya Capital Investment Co.	ASIYA.KW	NM	0.38	0.00%	0.86	0.034	0.000	27.2	0.041	0.030	0.0%	329,386	10,920	3.0%	NM
▲ Gulf North Africa Holding Co.	GNAH.KW	NM	0.78	0.00%	1.65	0.054	0.001	8.1	0.057	0.044	10.2%	1,756,913	94,874	16.1%	NM
= Amwal International Investment Co.	AMWA.KW	13.8	0.56	0.00%	0.60	0.056	0.000	10.0	0.087	0.050	(10.3%)	0	0	0.1%	4.1%
▲ Alimtiq Investment Group	ALIMK.KW	9.9	0.75	5.81%	0.81	0.132	0.001	149.6	0.143	0.122	(1.5%)	693,117	90,931	11.2%	7.6%
= Tamkeen Holding Co.	TAMKE.KW	NM	0.12	0.00%	NA	0.011	0.000	0.8	0.015	0.003	14.1%	0	0	1.1%	NM
▲ Manazel Holding Co.	MANK.KW	NM	0.57	0.00%	1.76	0.024	0.001	10.1	0.037	0.024	(4.9%)	855,011	19,238	5.0%	NM
▲ National Industries Group	NIND.KW	11.5	0.86	4.99%	1.33	0.229	0.004	327.0	0.241	0.149	52.2%	10,078,983	2,296,828	44.2%	7.4%
= Warba Capital Holding Co.	WARBACAP.KW	NM	1.79	0.00%	1.17	0.085	0.000	12.8	0.090	0.019	177.8%	0	0	11.5%	NM
= Arabi Holding Group Co.	AGHC.KW	NM	0.54	0.00%	0.28	0.079	0.000	13.7	0.092	0.060	14.5%	0	0	2.0%	0.4%
= Privatization Holding Co.	KPPC.KW	NM	0.41	8.53%	1.28	0.059	0.000	35.7	0.065	0.015	11.6%	72,540	4,246	18.7%	NM
= Credit Rating & Collection Co.	TAHS.KW	NM	0.52	0.00%	0.07	0.018	0.000	2.9	0.024	0.018	(21.5%)	0	0	0.2%	NM
= Egypt Kuwait Holding Co.	EKHK.KW	17.5	3.21	4.40%	0.35	0.455	0.000	466.1	0.475	0.063	40.0%	0	0	0.2%	18.4%
▲ GFH Financial Group	GFH.KW	6.7	0.83	6.00%	1.15	0.072	0.002	263.2	0.113	0.066	(6.9%)	3,448,014	243,031	4.6%	12.4%
▼ Inovent	INOV.KW	4.9	0.51	6.86%	0.98	0.073	(0.000)	20.9	0.092	0.070	(8.9%)	99,000	7,217	4.0%	10.5%
= Sanad Holding Co.	SANAD.KW	66.8	1.22	0.00%	0.05	0.110	0.000	48.1	0.110	0.028	10.0%	0	0	0.0%	1.8%
= Amar For Finance and Leasing Co.	AMARF.KW	NM	0.32	0.00%	0.08	0.028	0.000	5.6	0.049	0.033	(32.2%)	0	0	0.4%	NM
= Al-Manar Financing & Leasing Co.	ALMANAR.KW	19.4	0.36	0.00%	NA	0.038	0.000	11.7	0.075	0.000	(28.9%)	0	0	8.0%	1.8%
Financial Services		11.4	0.77	4.51%				2,564.3			22.3%	49,744,478	4,834,791		6.8%

Boursa Kuwait Daily Bulletin

Monday, June 10, 2019

Company	Reuters Ticker	Valuation Multiples				Price (KWD)		MKT Cap (KWD Mn.)	52 Weeks High (KWD)	52 Weeks Low (KWD)	YTD-19 Return #	Daily Trading Data		YTD-19 Capital Turnover	ROE
		Trailing P/E (X)	Trailing P/BV (X)	Dividend Yield	Beta	Closing	DTD Change					Volume (Shrs.)	Value (KWD)		
= Automated Systems Co.	ASCK.KW	NM	0.73	4.15%	NA	0.096	0.000	9.6	0.139	0.066	(10.7%)	0	0	0.5%	0.5%
= Osos Holding Group Co.	OSOS.KW	7.5	0.82	9.62%	0.43	0.104	0.000	10.4	0.118	0.080	2.0%	0	0	10.9%	10.9%
▲ Hayat Communications Co.	HAYK.KW	12.4	0.42	0.00%	1.59	0.045	0.000	4.2	0.080	0.025	(33.7%)	45,501	2,054	0.5%	3.3%
Technology		13.5	0.67	5.78%				24.2			(11.3%)	45,501	2,054		5.0%

Boursa Kuwait	16.0	1.45	3.56%				33,943.7			17.0%	241,083,191	68,565,521		9.1%
----------------------	-------------	-------------	--------------	--	--	--	-----------------	--	--	--------------	--------------------	-------------------	--	-------------

Year-to-Date 2019 Top Movers & Most Active Stocks

YTD Top % Gainers	Close (KWD)	Percent Change
Gulf Investment House	0.058	223.0%
Warba Capital Holding Co.	0.085	177.8%
National Industries Group	0.229	52.2%
Kuwait Real Estate Co.	0.076	47.3%
National Investment Co.	0.120	45.5%

YTD Top % Losers	Close (KWD)	Percent Change
Yiaco Medical Co.	0.067	(37.9%)
Al Mudon International Real Estate Co.	0.018	(37.5%)
Combined Group Contracting Co.	0.200	(37.5%)
ALAFCO Aviation Lease & Finance Co.	0.229	(34.4%)
UniCap Investment and Finance	0.052	(34.2%)

YTD Most Active by Volume	Close (KWD)	Volume (Shrs.)
Gulf Bank	0.320	1,488,391,559
Ahli United Bank - Bahrain	0.262	1,476,092,803
A'ayan Leasing & Investment Co.	0.043	1,096,384,372
Kuwait Finance House	0.694	713,409,265
National Industries Group	0.229	630,957,370

YTD Most Active by Value	Close (KWD)	Value (KWD)
National Bank of Kuwait	0.994	522,222,224
Kuwait Finance House	0.694	466,960,555
Gulf Bank	0.320	431,296,554
Ahli United Bank - Bahrain	0.262	364,337,435
Zain	0.564	196,591,765

* Different Fiscal Year Company