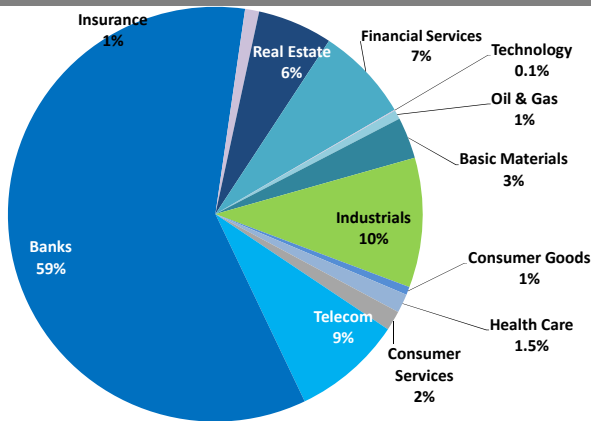


Boursa Kuwait Daily Report

May 1, 2019

Sector Weight by Market Cap



Market Capitalization - Sector Returns

	Market Cap. (KWD Mn)	DTD	DTD % Chg	MTD % Chg	YTD % Chg
Boursa Kuwait	32,394.2	▲	0.1%	0.1%	11.7%
Oil & Gas	231.9	▼	(0.5%)	(0.5%)	1.9%
Basic Materials	1,045.7	▲	0.1%	0.1%	1.4%
Industrials	3,275.3	▲	0.4%	0.4%	(3.8%)
Consumer Goods	204.7	▼	(1.7%)	(1.7%)	0.3%
Health Care	477.1	=	0.0%	0.0%	1.6%
Consumer Services	498.5	▼	(0.3%)	(0.3%)	(2.6%)
Telecommunications	2,767.4	▲	0.3%	0.3%	1.8%
Banks	19,243.1	▲	0.2%	0.2%	19.5%
Insurance	348.2	▲	0.9%	0.9%	(3.4%)
Real Estate	1,896.7	▲	1.6%	1.6%	1.8%
Financial Services	2,383.5	▼	(2.2%)	(2.2%)	13.7%
Technology	22.2	▼	(0.4%)	(0.4%)	(18.6%)

Top 10 Companies by Market Capitalization

Company Name	Market Cap. (Mn KWD)	P/E (X)	ROE* (%)
1- National Bank of Kuwait	6,047.7	16.3	11.7%
2- Kuwait Finance House	4,639.4	20.4	12.0%
3- Ahli United Bank - Bahrain	2,228.7	10.5	17.8%
4- Zain	2,012.1	10.2	15.4%
5- Boubyan Bank	1,548.8	27.6	13.7%
6- Agility (PWC Logistics)	1,283.4	15.8	8.0%
7- Commercial Bank of Kuwait	1,107.6	17.4	8.7%
8- Gulf Bank	938.8	16.5	9.0%
9- Burgan Bank	853.1	10.3	11.0%
10- Mabane Co.	672.4	12.8	12.4%
Total	21,332	15.25	12.2%

*: ROE is calculated based on FY2018 net profit & shareholders' equity as of 31-December-18

Top Movers and Most Active Stocks

Today's Top % Gainers	Close (KWD)	Change (KWD)	Percent Change
Amwal International Investment Co.	0.087	0.015	20.9%
Kuwait Real Estate Holding Co.	0.030	0.002	8.7%
United Projects Group	0.455	0.035	8.3%
Salhia Real Estate Co.	0.350	0.022	6.7%
Al Rai Media Group Co.	0.046	0.003	5.8%

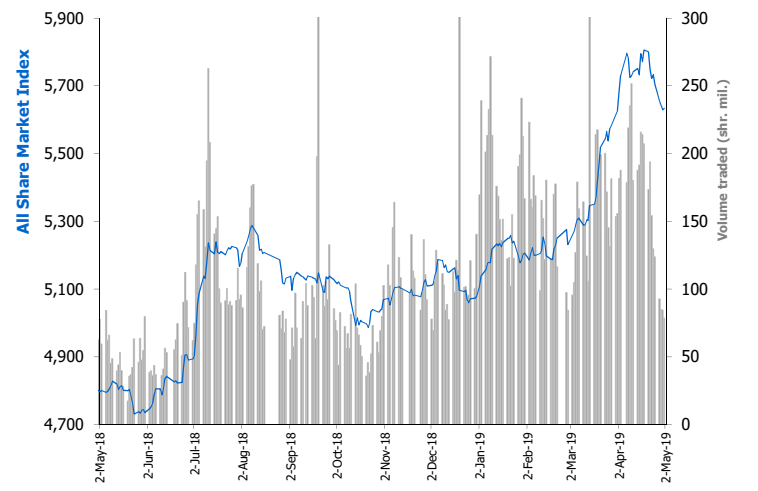
Today's Top % Losers	Close (KWD)	Change (KWD)	Percent Change
Al Eid Food Co.	0.048	(0.011)	(18.9%)
Senegy Holding Co.	0.025	(0.005)	(15.3%)
Automated Systems Co.	0.081	(0.009)	(10.6%)
Tamdeen Investment Co.	0.300	(0.035)	(10.4%)
Inovent	0.073	(0.008)	(9.9%)

Today's Most Active by Volume	Close (KWD)	Percent Change	Volume (Shares)
Al Madina For Finance & Investment Co.	0.022	(0.5%)	6,467,216
A'ayan Leasing & Investment Co.	0.047	(3.3%)	6,360,812
Gulf Bank	0.308	1.3%	6,166,034
National Industries Group	0.217	(0.9%)	6,009,258
Kuwait International Bank	0.280	(1.1%)	4,437,119

Source: Boursa Kuwait, KAMCO Research

Market Breadth	▲ 43	▼ 64	= 69		
Benchmark Return	Closing Value	DTD Chg	DTD % Chg	MTD % Chg	YTD % Chg
Premier Market Index	6,043.80	(3.53)	(0.1%)	(0.1%)	14.7%
Main Market Index	4,847.87	19.05	0.4%	0.4%	2.3%
All Share Market Index	5,633.75	3.75	0.1%	0.1%	10.9%
Market Cap (KWD Mn)	32,394.21	25.22	0.1%	0.1%	11.7%

Index Performance relative to Volume



Market Trading Data and Volatility

Trading Indicators	Today's Value	DTD Chg	DTD % Chg	Average Daily YTD 2019	Average Daily YTD 2018
Volume (Shrs Mn)	78.6	(5.8)	(6.9%)	168.8	82.2
Value Traded (KWD Mn)	17.2	(1.9)	(10.0%)	31.5	12.3
No. of Trades	4,971	933	23.1%	5,829	3,325

Today's Most Active by Value	Close (KWD)	Percent Change	Value (KWD)
National Bank of Kuwait	0.927	(0.3%)	3,460,265
Gulf Bank	0.308	1.3%	1,887,233
Mabane Co.	0.645	3.2%	1,862,345
Kuwait Finance House	0.665	0.0%	1,666,410
National Industries Group	0.217	(0.9%)	1,309,394

Boursa Kuwait - Premier Market

Wednesday, May 1, 2019

Premier Market Stocks	Closing Price			Market Capitalization			Valuation Multiples				ROE	YTD-19 Price Return	YTD-19 Trading Indicators	
	KWD	DTD Chg. (KWD)	D-T-D Return	KWD Mn	Weight in Premier Index	Weight in Boursa Kuwait	P/E (X)	P/BV (X)	Yield	Beta			Volume (Mn Shrs)	Value (KWD Mn)
▼ National Bank of Kuwait	0.927	(0.003)	(0.3%)	6,048	25.9%	18.7%	16.3	1.91	3.5%	1.34	11.7%	16.7%	469.28	423.86
▲ Gulf Bank	0.308	0.004	1.3%	939	4.0%	2.9%	16.5	1.49	3.1%	0.93	9.0%	22.2%	1,243.30	356.27
▼ Kuwait International Bank	0.280	(0.003)	(1.1%)	302	1.3%	0.9%	14.5	1.11	3.4%	0.97	7.6%	10.3%	289.28	86.74
▼ Burgan Bank	0.325	(0.003)	(0.9%)	853	3.7%	2.6%	10.3	1.13	3.5%	0.98	11.0%	22.8%	270.03	87.94
= Kuwait Finance House	0.665	0.000	0.0%	4,639	19.9%	14.3%	20.4	2.45	2.7%	1.59	12.0%	19.7%	491.76	318.83
▼ Boubyan Bank	0.537	(0.007)	(1.3%)	1,549	6.6%	4.8%	27.6	3.79	1.2%	0.91	13.7%	15.8%	53.69	31.31
▼ Kuwait Projects Co. (Holding)	0.212	(0.001)	(0.5%)	328	1.4%	1.0%	11.6	1.18	5.5%	0.77	10.2%	1.9%	53.24	11.11
▲ Mabane Co.	0.645	0.020	3.2%	672	2.9%	2.1%	12.8	1.58	1.7%	1.01	12.4%	12.8%	48.04	29.81
▼ National Industries Group (Holding)	0.217	(0.002)	(0.9%)	295	1.3%	0.9%	14.9	0.84	4.6%	1.34	5.6%	37.3%	483.26	95.01
▲ Boubyan Petrochemical Co.	0.925	0.005	0.5%	495	2.1%	1.5%	NM	1.70	4.7%	0.75	1.9%	(5.1%)	21.77	20.58
▼ Qurain Petrochemicals Industries Co.	0.389	(0.002)	(0.5%)	428	1.8%	1.3%	12.1	1.11	3.4%	0.70	9.1%	8.1%	31.66	12.08
▼ Agility Public Warehousing Co.	0.728	(0.002)	(0.3%)	1,283	5.5%	4.0%	15.8	1.27	1.7%	1.48	8.0%	4.4%	90.16	74.95
▲ Mobile Telecommunications Co.	0.465	0.003	0.6%	2,012	8.6%	6.2%	10.2	1.58	6.5%	1.66	15.4%	3.6%	278.77	130.03
▼ Human Soft Holding Co.	3.300	(0.029)	(0.9%)	403	1.7%	1.2%	12.8	6.02	5.6%	0.41	47.0%	0.6%	13.17	42.19
▼ GFH Financial Group (B.S.C)	0.074	(0.001)	(1.2%)	167	0.7%	0.5%	3.8	0.41	9.5%	1.18	10.8%	(3.6%)	155.08	12.00
▲ Ahli United Bank (B.S.C)	0.254	0.001	0.4%	2,229	9.6%	6.9%	10.5	1.88	4.6%	0.76	17.8%	38.3%	1,218.08	299.21
= Warba Bank	0.240	0.000	0.0%	360	1.5%	1.1%	28.3	1.85	0.0%	0.88	6.5%	14.3%	283.77	65.74
▼ Mezzan Holding Co.	0.500	(0.010)	(2.0%)	156	0.7%	0.5%	20.3	1.47	4.3%	0.61	7.2%	0.0%	29.28	13.50
▼ Integrated Holding Co.	0.718	(0.002)	(0.3%)	158	0.7%	0.5%	9.2	2.27	0.0%	0.36	24.8%	(14.5%)	22.17	16.89
Subtotal- Premier Market Stocks	5,633.75	3.75	0.07%	23,316	100%	72%	15.0	1.77	3.47%		11.8%	10.9%	5,545.79	2,128.06
Remaining of the Market				9,078		28%	17.2	0.86	4.60%		5.0%		8,297.44	458.22

Boursa Kuwait Daily Bulletin

Wednesday, May 1, 2019

Company	Reuters Ticker	Valuation Multiples				Price (KWD)		MKT Cap (KWD Mn.)	52 Weeks High (KWD)	52 Weeks Low (KWD)	YTD-19 Return #	Daily Trading Data		YTD-19	
		Trailing P/E (X)	Trailing P/BV (X)	Dividend Yield	Beta	Closing	DTD Change					Volume (Shrs.)	Value (KWD)	Capital Turnover	ROE
▼ Senergy Holding Co.	SENE.KW	NM	0.34	0.00%	1.42	0.025	(0.005)	5.0	0.037	0.023	(18.8%)	899,980	21,963	2.8%	NM
▲ Independent Petroleum Group	IPGK.KW	10.3	0.67	6.85%	0.32	0.416	0.001	63.3	0.450	0.379	3.7%	15,000	6,240	2.5%	6.5%
= National Petroleum Services Co.	NAPS.KW	8.5	2.76	6.79%	0.19	1.000	0.000	100.0	1.170	0.708	8.7%	0	0	0.6%	32.6%
▼ The Energy House Co.	ENER.KW	NM	1.05	0.00%	0.83	0.033	(0.001)	24.8	0.051	0.025	(9.1%)	101,250	3,357	2.0%	0.3%
▲ Gulf Petroleum Investment	GPIK.KW	NM	0.40	0.00%	1.25	0.028	0.000	17.0	0.033	0.022	(6.4%)	5,300	146	76.9%	NM
= Burgan Co. for Drilling, Tdg. & Maint. *	ABAR.KW	8.0	0.34	0.00%	NA	0.090	0.000	21.8	0.123	0.078	(5.3%)	0	0	0.4%	4.3%
Oil & Gas		13.2	0.84	4.80%				231.9			1.9%	1,021,530	31,706		6.4%
▲ Kuwait Foundry Co.	KFDC.KW	33.5	0.91	11.95%	0.46	0.251	0.002	38.6	0.289	0.175	31.4%	12,750	3,200	12.2%	2.7%
▲ Boubyan Petrochemicals Co.*	BPCC.KW	NM	1.70	4.73%	0.75	0.925	0.005	494.7	1.090	0.780	(5.1%)	69,049	63,763	4.1%	1.9%
= Al Kout for Industrial Projects Co.	ALKK.KW	13.5	2.72	5.95%	0.05	0.840	0.000	84.8	0.840	0.362	0.0%	0	0	0.0%	20.2%
▼ Qurain Petrochemical Industries Co. *	ALQK.KW	12.1	1.11	3.41%	0.70	0.389	(0.002)	427.6	0.415	0.321	8.1%	477,458	185,317	2.9%	9.1%
Basic Materials		21.7	1.39	4.56%				1,045.7			1.4%	559,257	252,280		6.4%
= Specialities Group Holding Co.	SPEC.KW	7.0	0.38	0.00%	0.35	0.070	0.000	10.5	0.082	0.053	2.5%	317,820	22,247	11.2%	5.4%
▲ Kuwait Cement Co.	KCEM.KW	27.8	1.14	6.46%	0.48	0.301	0.001	220.7	0.450	0.327	(20.6%)	1,306	404	0.3%	4.1%
▼ Gulf Cable & Electrical Ind. Co.	CABL.KW	9.4	0.52	7.16%	1.03	0.377	(0.001)	79.1	0.420	0.346	7.4%	84,154	31,633	5.5%	5.5%
▼ Heavy Eng'g Ind. & Shipbuilding Co.	SHIP.KW	7.3	1.26	5.13%	0.49	0.390	(0.002)	70.3	0.538	0.307	(9.7%)	198,037	77,443	13.5%	17.2%
▲ Kuwait Portland Cement Co.	PCEM.KW	12.9	1.95	7.52%	0.53	1.330	0.030	133.3	1.459	0.149	16.9%	83	104	5.7%	15.1%
= Shuaiba Industrial Co.	PAPE.KW	18.1	0.99	9.31%	0.20	0.180	0.000	18.1	0.249	0.015	(4.3%)	0	0	0.2%	5.4%
▲ Metal & Recycling Co.	MRCK.KW	NM	0.18	0.00%	0.67	0.030	0.008	2.5	0.075	0.012	(52.4%)	7,000	210	0.1%	NM
▲ ACICO Industries Co.	ACIC.KW	22.3	0.51	3.12%	0.44	0.152	0.006	50.7	0.260	0.150	(4.4%)	75,010	11,023	3.1%	2.3%
= Hilal Cement Co.	HCKK.KW	NM	0.89	0.00%	0.13	0.121	0.000	12.3	0.139	0.067	8.0%	0	0	0.7%	NM
▲ National Industries Co.	NIBM.KW	16.2	0.77	5.39%	0.16	0.185	0.003	64.4	0.202	0.150	(7.5%)	25,000	4,625	0.3%	4.7%
▲ Equipment Holding Co.	EQUI.KW	NM	0.54	0.00%	1.39	0.026	0.000	3.5	0.034	0.025	(3.7%)	20,000	520	18.5%	NM
= National Co. for Consumer Industries	NCCI.KW	NM	0.33	0.00%	NA	0.030	0.000	2.7	0.084	0.035	(31.8%)	0	0	0.4%	0.3%
▼ Salbookh Trading Co.	SALB.KW	NM	0.55	0.00%	0.79	0.048	(0.001)	5.1	0.052	0.036	20.8%	129,635	6,257	27.8%	NM
▼ Agility (PWC Logistics)	AGLT.KW	15.8	1.27	1.69%	1.48	0.728	(0.002)	1,283.4	0.943	0.315	4.4%	1,007,499	730,178	5.1%	8.0%
= Educational Holding Group*	EDUK.KW	NM	1.99	4.76%	0.18	0.315	0.000	77.3	0.340	0.057	1.6%	0	0	0.5%	0.4%
= National Cleaning Co.	CLEA.KW	12.0	0.48	0.00%	0.97	0.070	0.000	17.5	0.072	0.047	22.0%	2,084	145	4.9%	4.0%
▼ Kuwait & Gulf Link Transport Co.	KGLK.KW	6.4	0.34	5.96%	0.98	0.084	(0.000)	22.1	0.130	0.090	(12.4%)	5,001	406	13.2%	5.3%
▼ Kuwait Co. For Process Plant Const. & Cont.	KPCP.KW	5.4	0.96	4.20%	0.33	0.230	(0.007)	23.1	0.260	0.159	0.0%	18,998	4,355	1.6%	17.7%
▼ Humansoft Holding Co.	HUMN.KW	12.8	6.02	5.58%	0.41	3.300	(0.029)	403.4	3.850	2.996	0.6%	79,144	261,175	10.8%	47.0%
= Gulf Franchising Co.	GFCI.KW	NM	0.68	0.00%	NA	0.059	0.000	2.4	0.250	0.013	(15.7%)	0	0	0.0%	NM
▼ National Shooting Co.	SHOOTING.KW	NM	0.20	0.00%	1.80	0.014	(0.000)	3.9	0.021	0.015	(13.8%)	23,504	309	10.1%	NM
▲ Combined Group Contracting Co.	CGCK.KW	7.5	0.82	7.21%	NA	0.235	0.004	38.4	0.457	0.295	(26.6%)	40,127	9,382	5.4%	10.9%
= Mishref General Trading & Contracting Co.	MTCC.KW	N/A	N/A	0.00%	0.89	0.056	0.000	17.2	N/A	N/A	0.0%	0	0	0.0%	N/A
▲ United Projects Group	UPAC.KW	7.7	1.43	20.52%	0.13	0.455	0.035	74.8	0.740	0.249	(28.3%)	10	5	0.4%	18.6%
▲ ALAFCO Aviation Lease & Finance Co.*	ALAF.KW	7.9	0.84	3.65%	0.41	0.274	0.007	260.9	0.372	0.060	(21.5%)	272,159	73,484	1.6%	10.7%
▲ Mubarrad Holding Co.	MBRD.KW	6.4	0.53	7.49%	0.85	0.063	0.001	10.7	0.080	0.040	1.0%	40,000	2,440	28.9%	8.3%
▲ KGL Logistics Co.	LOGK.KW	5.3	0.32	0.00%	0.82	0.043	0.000	31.2	0.051	0.040	5.2%	1,123,916	47,578	26.1%	6.0%
▼ Integrated holding Co.	INTEGRATED.KW	9.2	2.27	0.00%	0.36	0.718	(0.002)	158.0	0.970	0.720	(14.5%)	41,081	29,755	10.1%	24.8%
= Sharjah Cement Co.	SCEM.KW	18.0	0.37	11.11%	0.46	0.072	0.000	43.8	0.090	0.056	(17.1%)	0	0	0.1%	2.0%
= Gulf Cement Co.	GCEM.KW	NM	0.63	12.20%	0.50	0.066	0.000	53.9	0.090	0.059	(3.4%)	0	0	0.4%	NM
= Umm Al-Qaiwain General Investments Co.	QIC.KW	16.4	0.35	11.93%	0.20	0.059	0.000	21.3	0.077	0.052	(11.7%)	0	0	0.4%	2.1%
= Fujairah Cement Industries Co.	FCEM.KW	17.8	0.23	10.71%	0.53	0.056	0.000	19.9	0.077	0.055	(11.8%)	0	0	4.8%	1.3%
= Ras-Al-Khaimah for White Cement Co.	RKWC.KW	36.3	0.62	6.41%	0.19	0.078	0.000	39.0	0.087	0.059	4.1%	0	0	0.1%	1.7%
Industrials		13.8	1.08	4.20%				3,275.3			(3.8%)	3,511,568	1,313,677		7.8%

Company	Reuters Ticker	Valuation Multiples				Price (KWD)		MKT Cap (KWD Mn.)	52 Weeks High (KWD)	52 Weeks Low (KWD)	YTD-19 Return #	Daily Trading Data		YTD-19 Capital Turnover	ROE
		Trailing P/E (X)	Trailing P/BV (X)	Dividend Yield	Beta	Closing	DTD Change					Volume (Shrs.)	Value (KWD)		
= Palms Agro Production Co.	PAPK.KW	NM	0.28	24.96%	0.21	0.040	0.000	2.1	0.080	0.037	(33.3%)	0	0	0.6%	NM
▼ Livestock Transport & Trading Co.	CATT.KW	NM	1.10	2.44%	0.40	0.198	(0.002)	42.9	0.259	0.031	5.3%	10,051	1,989	0.9%	NM
▲ Danah Alsafat Foodstuff Co.	DANK.KW	NM	0.37	0.00%	0.52	0.034	0.000	4.1	0.053	0.036	(12.1%)	66,151	2,200	11.9%	NM
▼ Mezzan Holding Co.	MEZZ.KW	20.3	1.47	4.32%	0.61	0.500	(0.010)	155.7	0.771	0.431	0.0%	90,591	46,189	9.4%	7.2%
Consumer Goods		56.9	1.25	4.05%				204.7			0.3%	166,793	50,378		2.2%
= Advanced Technology Co.	ATCK.KW	22.6	2.59	2.00%	NA	1.000	0.000	150.0	1.000	0.067	0.0%	0	0	0.0%	11.5%
= Yiacco Medical Co.	YIAC.KW	NM	15.46	0.00%	0.63	0.067	0.000	12.1	0.142	0.080	(37.9%)	0	0	0.0%	NM
= Al-Maidan Clinic For Oral Health Services Co.	MIDAN.KW	54.8	8.98	0.40%	0.00	1.260	0.000	315.0	1.260	1.080	5.0%	0	0	0.0%	16.4%
Health Care		NM	5.08	0.89%				477.1			1.6%	0	0		4.8%
= Kuwait National Cinema Co.	KCIN.KW	11.0	1.23	5.57%	0.15	0.910	0.000	92.0	1.097	0.830	(14.9%)	0	0	0.0%	11.2%
= Kuwait Hotels Co.	KHOT.KW	NM	1.16	0.00%	NA	0.100	0.000	5.8	0.130	0.050	(23.1%)	0	0	0.0%	NM
= Sultan Center Food Products Co.	SCFK.KW	13.2	0.76	0.00%	0.70	0.057	0.000	33.0	0.076	0.013	8.0%	10,000	563	8.4%	5.8%
▲ Kuwait Cable Vision Co.	KWTV.KW	NM	0.95	0.00%	0.39	0.026	0.000	0.9	0.033	0.006	27.5%	5,000	128	1.5%	NM
▼ IFA Hotels & Resorts Co.*	IFAH.KW	NM	1.01	0.00%	0.14	0.065	(0.001)	41.2	0.110	0.054	(27.1%)	13,044	866	0.2%	NM
= Oula Fuel Marketing Co.	OULA.KW	12.4	0.71	42.09%	0.45	0.117	0.000	47.3	0.138	0.055	(0.8%)	24,394	2,858	1.9%	5.7%
▼ Kuwait Resorts Co.	MUNK.KW	8.7	0.42	8.82%	0.74	0.057	(0.000)	11.1	0.067	0.052	0.7%	22,667	1,239	36.2%	4.8%
= Jazeera Airways Co.	JAZK.KW	25.9	4.57	4.05%	0.27	0.865	0.000	173.0	0.880	0.114	18.5%	108,621	93,955	5.4%	17.6%
= Soor Fuel Marketing Co.	SOOR.KW	13.9	0.70	4.23%	0.39	0.117	0.000	47.4	0.139	0.108	1.7%	29,550	3,470	1.7%	5.0%
▼ Future Kid Entertainment and R.E Co.	KIDK.KW	10.7	0.56	12.07%	NA	0.098	(0.002)	11.4	0.135	0.088	3.2%	7,499	735	2.4%	5.2%
▲ Al Rai Media Group Co.	ALRA.KW	NM	0.76	NM	0.54	0.046	0.003	10.6	0.138	0.047	(25.4%)	550	25	3.4%	NM
▼ Jiyad Holding Co	JIYAD.KW	11.2	0.52	0.00%	0.72	0.057	(0.001)	19.9	0.103	0.064	(20.4%)	803,601	45,358	35.7%	4.6%
▼ Al Eid Food Co.	ALEID.KW	3.4	0.29	0.00%	NA	0.048	(0.011)	4.8	0.077	0.052	(27.3%)	1,664	83	0.9%	8.7%
Consumer Services		NM	1.10	8.43%				498.5			(2.6%)	1,026,590	149,279		NM
▲ Zain	ZAIN.KW	10.2	1.58	6.45%	1.66	0.465	0.003	2,012.1	0.506	0.367	3.6%	1,085,695	504,557	6.4%	15.4%
▼ National Mobile Telecom Co.	OORE.KW	11.5	0.62	7.31%	0.51	0.680	(0.009)	342.7	0.897	0.013	(4.8%)	7,385	5,024	0.5%	5.4%
▼ AAN digital services Co.	AAN.KW	NM	0.40	0.00%	1.60	0.013	(0.000)	11.5	0.023	0.016	(24.1%)	621,758	8,212	14.9%	NM
▲ Kuwait Telecommunication Co.	VIVA.KW	8.0	2.09	4.98%	0.76	0.803	0.001	401.0	0.899	0.683	0.4%	12,462	10,016	0.8%	26.3%
Telecommunications		10.0	1.35	6.32%				2,767.4			1.8%	1,727,300	527,809		13.4%
▼ National Bank of Kuwait	NBKK.KW	16.3	1.91	3.54%	1.34	0.927	(0.003)	6,047.7	0.967	0.270	16.7%	3,739,496	3,460,265	7.2%	11.7%
▲ Gulf Bank	GBKK.KW	16.5	1.49	3.09%	0.93	0.308	0.004	938.8	0.330	0.233	22.2%	6,166,034	1,887,233	40.8%	9.0%
▲ Commercial Bank of Kuwait	CBKK.KW	17.4	1.52	3.25%	0.73	0.556	0.028	1,107.6	0.700	0.299	22.3%	5,020	2,561	0.5%	8.7%
= Ahli Bank of Kuwait	ABKK.KW	12.3	0.89	4.34%	0.59	0.320	0.000	518.1	0.350	0.284	8.5%	0	0	0.9%	7.2%
▲ Ahli United Bank - Kuwait	BKME.KW	12.3	1.47	4.20%	0.75	0.306	0.002	631.2	0.369	0.249	8.2%	146,193	44,405	2.9%	11.9%
▼ Kuwait International Bank	KIBK.KW	14.5	1.11	3.40%	0.97	0.280	(0.003)	302.1	0.343	0.216	10.3%	4,437,119	1,250,955	26.8%	7.6%
▼ Burgan Bank	BURG.KW	10.3	1.13	3.51%	0.98	0.325	(0.003)	853.1	0.405	0.241	22.8%	177,104	57,840	10.3%	11.0%
= Kuwait Finance House	KFH.KW	20.4	2.45	2.70%	1.59	0.665	0.000	4,639.4	0.718	0.499	19.7%	2,513,209	1,666,410	7.0%	12.0%
▼ Boubyan Bank	BOUK.KW	27.6	3.79	1.23%	0.91	0.537	(0.007)	1,548.8	0.630	0.215	15.8%	840,827	453,575	1.9%	13.7%
= Warba Bank	WARB.KW	28.3	1.85	0.00%	0.88	0.240	0.000	360.0	0.265	0.205	14.3%	479,120	114,814	18.9%	6.5%
▲ Ahli United Bank - Bahrain	AUBK.KW	10.5	1.88	4.57%	0.76	0.254	0.001	2,228.7	0.277	0.019	38.3%	1,713,115	433,929	13.9%	17.8%
= Ithmaar Bank	ITHMR.KW	NM	1.91	0.00%	1.55	0.022	0.000	67.6	0.038	0.024	(10.8%)	0	0	4.9%	NM
Banks		16.2	1.87	3.20%				19,243.1			19.5%	20,217,237	9,371,987		11.6%

Company	Reuters Ticker	Valuation Multiples				Price (KWD)		MKT Cap (KWD Mn.)	52 Weeks High (KWD)	52 Weeks Low (KWD)	YTD-19 Return #	Daily Trading Data		YTD-19	
		Trailing P/E (X)	Trailing P/BV (X)	Dividend Yield	Beta	Closing	DTD Change					Volume (Shrs.)	Value (KWD)	Capital Turnover	ROE
= Kuwait Insurance Co.	KINS.KW	8.5	0.99	6.03%	0.04	0.395	0.000	76.6	0.427	0.245	9.7%	0	0	0.9%	11.6%
▲ Gulf Insurance Group	GINS.KW	9.8	1.31	5.51%	0.06	0.625	0.015	116.9	0.730	0.401	(4.6%)	10	6	0.1%	13.4%
= Ahleiah Insurance Co.	AINS.KW	8.6	0.77	8.45%	0.20	0.407	0.000	81.4	0.450	0.056	(4.7%)	0	0	1.4%	9.0%
▲ Warba Insurance Co.	WINS.KW	14.7	0.32	0.00%	0.62	0.067	0.002	11.5	0.092	0.055	0.9%	500	33	1.3%	2.2%
= Kuwait Reinsurance Co.	KWRE.KW	7.4	0.51	0.00%	0.01	0.132	0.000	24.9	0.198	0.037	(28.2%)	0	0	0.3%	6.9%
= First Takaful Insurance Co.	FTIK.KW	5.8	0.57	0.00%	0.11	0.045	0.000	4.8	0.053	0.029	1.8%	0	0	0.2%	9.7%
▼ Wethaq Takaful Insurance Co.	WETH.KW	39.5	0.29	0.00%	0.72	0.031	(0.001)	3.4	0.045	0.024	11.1%	3,500	109	14.8%	0.7%
= Bahrain Kuwait Insurance Co.	BKIK.KW	11.3	0.99	12.50%	0.04	0.200	0.000	28.6	0.200	0.200	0.0%	0	0	0.0%	8.8%
Insurance		9.2	0.86	6.18%				348.2			(3.4%)	4,010	148		9.3%
▼ Sokouk Holding Co.	SHCK.KW	NM	0.43	0.00%	1.48	0.036	(0.001)	21.2	0.052	0.038	(9.6%)	362,600	13,033	26.3%	NM
▼ Kuwait Real Estate Co.	KREK.KW	10.1	0.51	0.00%	1.39	0.072	(0.000)	67.8	0.075	0.044	38.0%	831,368	59,216	37.3%	5.1%
= United Real Estate Co.	UREK.KW	NM	0.37	0.00%	0.63	0.061	0.000	72.5	0.070	0.055	1.7%	0	0	0.3%	NM
▼ National Real Estate Co.	NREK.KW	9.9	0.41	0.00%	1.34	0.078	(0.001)	106.7	0.124	0.080	(13.8%)	1,058,301	82,929	5.9%	4.2%
▲ Salhia Real Estate Co.	SREK.KW	10.4	1.20	5.51%	0.31	0.350	0.022	179.5	0.350	0.324	6.1%	5,000	1,700	1.7%	11.6%
= Tamdeen Real Estate Co.	TAMK.KW	23.9	0.89	3.89%	0.25	0.300	0.000	129.6	0.385	0.126	(14.3%)	0	0	0.4%	3.7%
▲ Ajial Real Estate Entertainment Co.	AREC.KW	10.5	0.21	3.55%	0.38	0.140	0.005	25.9	0.159	0.032	3.7%	70,000	9,710	2.0%	2.0%
= Al Massaleh Real Estate Co.	MREC.KW	NM	0.41	0.00%	0.42	0.037	0.000	8.7	0.049	0.028	1.1%	0	0	2.5%	NM
= Arab Real Estate Co.	ARAB.KW	NM	0.28	0.00%	1.42	0.031	0.000	15.8	0.035	0.027	7.3%	3,320	103	11.5%	NM
▼ AL-Enma'a Real Estate Co.*	ENMA.KW	NM	0.43	0.00%	0.75	0.041	(0.002)	18.6	0.048	0.030	26.3%	1,159,475	48,212	33.3%	NM
▲ Mabaneer Co.	MABK.KW	12.8	1.58	1.75%	1.01	0.645	0.020	672.4	0.710	0.076	12.8%	2,924,012	1,862,345	4.6%	12.4%
= Injazat Real Estate Development Co.	INJA.KW	7.3	0.47	8.07%	0.52	0.085	0.000	29.2	0.090	0.010	(1.7%)	0	0	1.5%	6.5%
▼ Investors Holding Group Co.	INVK.KW	NM	0.29	0.00%	1.63	0.011	(0.000)	6.6	0.016	0.012	(13.1%)	2,639,893	28,402	80.9%	NM
▼ International Resorts Co.	IRCK.KW	6.7	0.35	0.00%	1.49	0.020	(0.000)	3.1	0.030	0.018	(9.8%)	9,910	191	1.0%	5.2%
▲ The Commercial Real Estate Co.	TIJK.KW	10.3	0.51	5.93%	0.80	0.084	0.001	149.4	0.098	0.030	(9.1%)	100,058	8,340	5.0%	4.9%
= Sanam Real Estate Co.	SANK.KW	NM	0.58	0.00%	0.47	0.045	0.000	5.5	0.063	0.026	30.8%	0	0	2.8%	NM
▼ A'ayan Real Estate Co.	AYRE.KW	4.6	0.38	0.00%	0.89	0.065	(0.002)	27.1	0.068	0.043	13.0%	110,500	7,244	9.5%	8.3%
= Aqar Real Estate Investment Co.	AQAR.KW	11.6	0.50	7.54%	NA	0.060	0.000	14.1	0.074	0.024	(2.0%)	0	0	0.4%	4.3%
▲ Kuwait Real Estate Holding Co.	ALAQ.KW	54.7	0.52	0.00%	1.13	0.030	0.002	5.7	0.035	0.020	20.0%	80,450	2,363	1.3%	0.9%
▲ MAZAYA Holding Co.	MAZA.KW	8.2	0.46	13.19%	1.41	0.061	0.000	41.6	0.100	0.070	(13.7%)	1,219,510	73,395	31.0%	5.6%
= Tijara Real Estate & Investment Co.	TIJA.KW	19.4	0.48	6.00%	0.71	0.050	0.000	18.5	0.058	0.025	2.0%	0	0	0.5%	2.5%
▼ Al TAMEER Real Estate Investment Co.	AMAR.KW	NM	0.40	0.00%	1.53	0.028	(0.003)	6.6	0.040	0.026	(1.8%)	3,044,650	85,636	91.0%	NM
= Arkan Al-Kuwait Real Estate Co. *	ARKK.KW	7.0	0.57	10.00%	0.35	0.080	0.000	20.1	0.091	0.072	(4.2%)	980	78	1.6%	8.2%
= Al-Argan International Real Estate Co.	ARGK.KW	63.9	0.40	0.00%	0.38	0.133	0.000	35.2	0.150	0.014	(2.2%)	0	0	0.0%	0.6%
= Abyaar Real Estate Development Co.	ABYR.KW	NM	0.19	0.00%	1.57	0.014	0.000	15.8	0.020	0.015	(5.9%)	515,010	7,349	52.0%	NM
= Munshaat Real Estate Projects Co.	MUNS.KW	NM	0.61	0.00%	1.12	0.089	0.000	28.7	0.120	0.031	(11.0%)	12,000	1,047	3.0%	NM
= First Dubai For Real Estate Development	FIRST.KW	11.9	0.47	0.00%	1.61	0.035	0.000	34.9	0.047	0.035	(7.4%)	40,530	1,328	3.2%	4.0%
= Kuwait Business Town Real Estate Co.	KBTK.KW	10.5	0.40	6.90%	1.38	0.044	0.000	26.0	0.054	0.039	(3.8%)	0	0	3.9%	3.8%
= Real Estate Asset Management Co.	REAM.KW	35.0	1.13	2.91%	0.01	0.171	0.000	17.9	1.415	0.036	(5.0%)	0	0	0.0%	3.2%
▲ MENA Real Estate Co. *	MENK.KW	NM	0.50	0.00%	0.94	0.040	0.000	5.4	0.050	0.021	11.0%	708,650	27,310	156.4%	NM
▼ Al Mudon International Real Estate Co.	ALMK.KW	NM	0.15	0.00%	1.37	0.021	(0.002)	2.1	0.032	0.024	(28.8%)	1,010	22	10.6%	NM
= Real Estate Trade Centers Co.	MARA.KW	NM	0.17	0.00%	0.47	0.029	0.000	3.9	0.037	0.018	31.8%	0	0	20.0%	0.1%
▼ Kuwait Remal Real Estate Co.	REMA.KW	NM	0.46	0.00%	1.01	0.035	(0.000)	10.7	0.050	0.029	(16.7%)	292,400	10,368	23.0%	NM
▼ Mashaer Holding Co.	MASHAER.KW	NM	0.60	0.00%	0.25	0.070	(0.000)	12.6	0.088	0.015	(16.4%)	512,828	35,902	116.3%	NM
= Effect Real Estate Co.	EFFECT.KW	NM	0.32	0.00%	0.86	0.023	0.000	1.9	0.023	0.009	152.7%	0	0	4.7%	NM
▼ Ajwan Gulf Real Estate Co.	AJWN.KW	NM	0.24	0.00%	0.42	0.014	(0.001)	2.9	0.025	0.017	(24.7%)	992,044	13,864	48.5%	NM
= Al Masaken Intl. Real Estate Dev. Co.	MASKN.KW	NM	0.83	0.00%	0.37	0.070	0.000	7.0	0.100	0.036	12.0%	0	0	0.2%	NM
= Dalqan Real Estate Co.	DALQ.KW	NM	3.06	0.00%	NA	0.350	0.000	19.3	0.350	0.179	0.0%	0	0	0.0%	2.2%
= Dar Al Thuraya Real Estate Co.	THURY.KW	32.4	1.76	0.00%	NA	0.179	0.000	26.2	0.220	0.220	(18.6%)	0	0	0.0%	5.4%
Real Estate		28.4	0.68	2.68%				1,896.7			1.8%	16,694,499	2,380,087		2.4%

Company	Reuters Ticker	Valuation Multiples				Price (KWD)		MKT Cap (KWD Mn.)	52 Weeks High (KWD)	52 Weeks Low (KWD)	YTD-19 Return #	Daily Trading Data		YTD-19	
		Trailing P/E (X)	Trailing P/BV (X)	Dividend Yield	Beta	Closing	DTD Change					Volume (Shrs.)	Value (KWD)	Capital Turnover	ROE
▲ Kuwait Investment Co.	KINV.KW	7.2	0.60	7.77%	0.62	0.128	0.001	70.6	0.139	0.103	(1.5%)	576,635	73,837	7.4%	8.4%
▲ Commercial Facilities Co.	FACI.KW	12.3	0.63	7.65%	0.58	0.198	0.002	106.3	0.205	0.021	13.1%	98,575	19,610	2.1%	5.1%
▲ Int'l Financial Advisors Co.	IFIN.KW	NM	0.54	0.00%	1.65	0.024	0.001	17.0	0.039	0.021	(16.0%)	1,365,371	30,722	23.6%	NM
▼ National Investment Co.	NINV.KW	13.9	0.58	5.45%	1.33	0.117	(0.001)	102.5	0.123	0.070	41.8%	1,234,425	143,988	13.0%	4.1%
▼ Kuwait Projects Co.(Holding)	KPRO.KW	11.6	1.18	5.54%	0.77	0.212	(0.001)	328.0	0.252	0.033	1.9%	125,892	26,859	3.4%	10.2%
▼ Coast Invest. & Development Co.	COAS.KW	16.6	0.42	0.00%	2.02	0.038	(0.002)	23.8	0.045	0.028	14.5%	180,370	6,879	8.7%	2.6%
▲ The Securities House Co.	SECH.KW	NM	0.57	0.00%	1.30	0.052	0.000	23.3	0.062	0.044	(2.5%)	1,955,410	100,911	36.7%	0.5%
▼ Arzan Financial Group For Fin. & Invest.	ARZA.KW	10.1	0.25	0.00%	1.16	0.032	(0.000)	25.5	0.038	0.025	6.7%	561,734	18,047	13.4%	2.5%
= Kuwait Financial Centre	MARKZ.KW	18.1	0.45	5.81%	0.67	0.086	0.000	41.3	0.110	0.042	(14.0%)	0	0	0.6%	2.5%
= Kuwait & M.E. Financial Inv. Co.	KMEF.KW	68.7	0.87	0.00%	0.75	0.050	0.000	13.2	0.054	0.019	56.3%	0	0	12.8%	1.3%
▼ Al-Aman Investment Co.	AMAN.KW	11.2	0.58	0.00%	0.82	0.062	(0.000)	9.3	0.081	0.034	27.1%	91,993	5,658	58.9%	5.2%
▼ First Investment Co.	OLAK.KW	NM	0.27	0.00%	0.96	0.038	(0.000)	24.9	0.045	0.016	(3.3%)	3,378,261	129,122	71.2%	0.3%
▲ Al-Mal Investment Co.	MALK.KW	NM	0.50	0.00%	1.68	0.018	0.001	5.4	0.025	0.017	(8.4%)	18,545	315	16.5%	NM
▼ Gulf Investment House	GIHK.KW	1.9	0.67	0.00%	1.14	0.060	(0.001)	24.3	0.083	0.014	236.0%	30,127	1,751	8.0%	35.8%
▼ A'ayan Leasing & Investment Co.	AAYA.KW	12.7	0.47	0.00%	1.38	0.047	(0.002)	38.5	0.056	0.028	26.8%	6,360,812	303,672	125.0%	3.7%
= Bayan Investment Co.	BAYK.KW	NM	0.46	0.00%	1.63	0.042	0.000	16.6	0.052	0.034	(12.6%)	0	0	2.7%	NM
▼ Osoul Investment Co.	OSUL.KW	15.5	0.52	9.60%	0.48	0.058	(0.002)	10.9	0.064	0.050	(4.5%)	5,030	302	1.3%	3.4%
▲ Kuwait Finance & Investment Co.	KFSK.KW	NM	0.34	0.00%	0.47	0.041	0.002	13.2	0.049	0.033	20.6%	54,500	2,285	5.9%	0.4%
▼ KAMCO Investment Co.	KAMC.KW	7.4	0.53	6.26%	0.13	0.072	(0.007)	19.0	0.091	0.062	4.3%	10,020	722	1.2%	7.2%
▼ National International Holding Co.	NIHK.KW	6.5	0.37	6.68%	0.93	0.069	(0.001)	15.0	0.081	0.053	11.5%	21,043	1,473	4.4%	5.7%
▼ UniCap Investment and Finance	UNICAP.KW	7.1	0.65	4.57%	0.71	0.065	(0.001)	15.6	0.085	0.048	(17.6%)	48,050	3,124	13.3%	9.1%
= Al Madar Finance & Investment Co.	MADR.KW	2.3	1.60	0.00%	0.44	0.160	0.000	34.2	0.180	0.014	(4.2%)	434,010	68,848	31.3%	69.5%
▲ Al-Deera Holding	DEER.KW	6.6	0.47	0.00%	1.57	0.016	0.000	3.1	0.026	0.016	(15.7%)	1,510	23	3.7%	7.2%
▲ Al Salam Group Holding Co.	SAGH.KW	31.4	0.31	0.00%	1.58	0.037	0.000	10.0	0.040	0.017	15.3%	20,260	749	30.5%	1.0%
▲ Ekttitab Holding Co.	EKTT.KW	NM	0.37	0.00%	1.27	0.019	0.000	6.1	0.029	0.019	(9.1%)	100,028	1,801	8.5%	NM
▼ Al Madina For Finance & Investment Co.	MADI.KW	NM	0.48	0.00%	1.24	0.022	(0.000)	8.8	0.030	0.020	4.9%	6,467,216	136,922	61.0%	NM
▲ NOOR Financial Investment Co.	NOOR.KW	1.5	0.66	0.00%	0.76	0.088	0.002	36.2	0.095	0.045	13.8%	391,530	33,891	35.4%	45.2%
▼ Tamdeen Investment Co.	TAMI.KW	14.0	0.54	3.98%	0.16	0.300	(0.035)	103.5	0.349	0.232	7.1%	1,750,964	504,702	0.7%	3.9%
= Kuwait Bahrain Int'l Exchange Co.	EXCH.KW	14.6	0.61	0.00%	NA	0.086	0.000	4.0	N/A	N/A	0.0%	0	0	0.0%	4.2%
▼ Kuwait Syrian Holding Co.	KSHC.KW	NM	0.48	6.00%	1.56	0.050	(0.005)	8.8	0.082	0.027	25.0%	71,350	3,436	39.9%	NM
▼ Asiya Capital Investment Co.	ASIYA.KW	26.2	0.41	0.00%	0.90	0.036	(0.000)	28.7	0.044	0.030	5.6%	19,186	671	2.8%	1.5%
= Gulf North Africa Holding Co.	GNAH.KW	NM	0.79	0.00%	1.71	0.054	0.000	8.1	0.057	0.034	10.8%	0	0	13.9%	NM
▲ Amwal International Investment Co.	AMWA.KW	25.9	0.90	0.00%	0.68	0.087	0.015	15.8	0.087	0.046	40.8%	2,200	176	0.0%	3.5%
▼ Alimtiqaz Investment Group	ALIMK.KW	7.4	0.71	5.90%	0.82	0.130	(0.001)	147.4	0.143	0.122	(3.0%)	546,501	70,922	8.7%	9.7%
= Tamkeen Holding Co.	TAMKE.KW	NM	0.12	0.00%	NA	0.012	0.000	0.8	0.017	0.003	19.2%	0	0	1.1%	NM
= Manazel Holding Co.	MANK.KW	NM	0.69	0.00%	1.77	0.028	0.000	12.1	0.037	0.024	13.4%	0	0	3.7%	NM
▼ National Industries Group	NIND.KW	14.9	0.84	4.61%	1.34	0.217	(0.002)	295.1	0.237	0.147	37.3%	6,009,258	1,309,394	35.5%	5.6%
▲ Warba Capital Holding Co.	WARBACAP.KW	NM	0.85	0.00%	1.22	0.085	0.002	6.1	0.085	0.019	176.8%	479,038	38,818	20.2%	NM
▼ Arabi Holding Group Co.	AGHC.KW	36.4	0.61	0.00%	0.29	0.090	(0.001)	15.6	0.092	0.060	30.4%	3,200	262	1.9%	1.7%
▼ Privatization Holding Co.	KPPC.KW	NM	0.41	8.56%	1.28	0.058	(0.001)	35.6	0.065	0.018	11.2%	160,001	9,291	17.7%	NM
= Credit Rating & Collection Co.	TAHS.KW	NM	0.67	0.00%	NA	0.023	0.000	3.8	0.024	0.018	3.1%	0	0	0.2%	NM
▼ Egypt Kuwait Holding Co.	EKHK.KW	17.4	2.91	4.69%	0.35	0.426	(0.029)	436.4	0.475	0.069	31.1%	8,389	3,574	0.2%	16.7%
▼ GFH Financial Group	GFH.KW	3.8	0.41	9.46%	1.18	0.074	(0.001)	167.0	0.113	0.066	(3.6%)	456,902	34,101	6.9%	10.8%
▼ Inovent	INOV.KW	4.9	0.50	0.00%	0.99	0.073	(0.008)	20.9	0.092	0.065	(9.0%)	155,837	11,185	3.7%	10.3%
= Sanad Holding Co.	SANAD.KW	23.9	0.33	0.00%	0.06	0.110	0.000	13.2	0.110	0.031	10.0%	0	0	0.1%	1.4%
= Amar For Finance and Leasing Co.	AMARF.KW	NM	0.36	0.00%	0.09	0.031	0.000	6.2	0.049	0.033	(24.9%)	0	0	0.1%	NM
▼ Al-Manar Financing & Leasing Co.	ALMANAR.KW	18.9	0.38	0.00%	NA	0.040	(0.000)	12.2	0.075	0.000	(25.8%)	60,010	2,350	7.5%	2.0%
Financial Services		11.1	0.71	4.61%				2,383.5			13.7%	33,254,183	3,100,392		6.4%

Boursa Kuwait Daily Bulletin

Wednesday, May 1, 2019

Company	Reuters Ticker	Valuation Multiples				Price (KWD)		MKT Cap (KWD Mn.)	52 Weeks High (KWD)	52 Weeks Low (KWD)	YTD-19 Return #	Daily Trading Data		YTD-19 Capital Turnover	ROE
		Trailing P/E (X)	Trailing P/BV (X)	Dividend Yield	Beta	Closing	DTD Change					Volume (Shrs.)	Value (KWD)		
▼ Automated Systems Co.	ASCK.KW	16.3	0.61	18.63%	NA	0.081	(0.009)	8.0	0.160	0.066	(25.5%)	20,253	1,822	0.4%	3.7%
▼ Osos Holding Group Co.	OSOS.KW	8.2	0.76	10.00%	0.46	0.100	(0.005)	10.0	0.118	0.079	(2.0%)	428,000	42,886	9.5%	9.2%
▲ Hayat Communications Co.	HAYK.KW	15.1	0.41	0.00%	1.39	0.045	0.015	4.2	0.080	0.027	(33.8%)	8,500	383	0.1%	2.7%
Technology		11.2	0.61	11.25%				22.2			(18.6%)	456,753	45,090		5.4%
Boursa Kuwait		15.5	1.37	3.78%				32,394.2			11.7%	78,639,720	17,222,833		8.8%

Year-to-Date 2019 Top Movers & Most Active Stocks

YTD Top % Gainers	Close (KWD)	Percent Change
Gulf Investment House	0.060	236.0%
Warba Capital Holding Co.	0.085	176.8%
Kuwait & M.E. Financial Inv. Co.	0.050	56.3%
National Investment Co.	0.117	41.8%
Amwal International Investment Co.	0.087	40.8%

YTD Most Active by Volume	Close (KWD)	Volume (Shrs.)
Gulf Bank	0.308	1,243,295,357
Ahli United Bank - Bahrain	0.254	1,218,077,578
A'ayan Leasing & Investment Co.	0.047	1,017,493,869
Abyaar Real Estate Development Co.	0.014	575,552,099
Investors Holding Group Co.	0.011	503,819,097

YTD Top % Losers	Close (KWD)	Percent Change
Al Mudon International Real Estate Co.	0.021	(28.8%)
United Projects Group	0.455	(28.3%)
Kuwait Reinsurance Co.	0.132	(28.2%)
Al Eid Food Co.	0.048	(27.3%)
IFA Hotels & Resorts Co.	0.065	(27.1%)

YTD Most Active by Value	Close (KWD)	Value (KWD)
National Bank of Kuwait	0.927	423,860,893
Gulf Bank	0.308	356,265,033
Kuwait Finance House	0.665	318,830,730
Ahli United Bank - Bahrain	0.254	299,212,038
Zain	0.465	130,031,425

* Different Fiscal Year Company