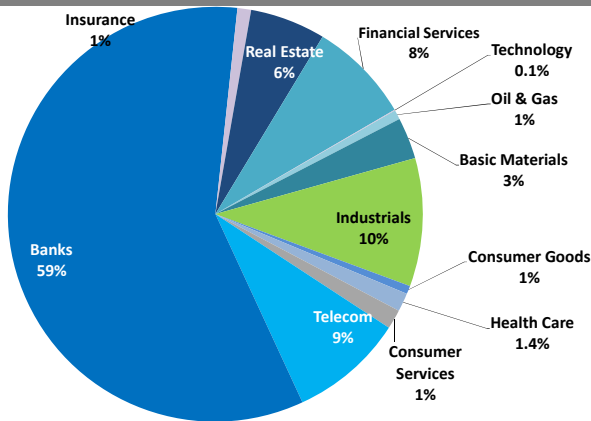


Boursa Kuwait Daily Report

May 13, 2019

Sector Weight by Market Cap



Market Capitalization - Sector Returns

	Market Cap. (KWD Mn)	DTD % Chg	MTD % Chg	YTD % Chg
Boursa Kuwait	32,529.1	▼ (1.1%)	0.5%	12.1%
Oil & Gas	237.7	▼ (0.2%)	2.0%	4.5%
Basic Materials	1,052.9	▼ (0.1%)	0.8%	2.1%
Industrials	3,248.6	▼ (1.1%)	(0.5%)	(4.6%)
Consumer Goods	208.5	▲ 0.4%	0.1%	2.1%
Health Care	467.1	= 0.0%	(2.1%)	(0.5%)
Consumer Services	496.9	▲ 1.2%	(0.6%)	(2.9%)
Telecommunications	2,886.1	▲ 0.1%	4.6%	6.2%
Banks	19,066.3	▼ (1.4%)	(0.8%)	18.4%
Insurance	347.5	= 0.0%	0.7%	(3.6%)
Real Estate	1,915.1	▼ (0.9%)	2.6%	2.8%
Financial Services	2,581.3	▼ (0.8%)	6.0%	23.1%
Technology	21.1	= 0.0%	(5.4%)	(22.7%)

Top 10 Companies by Market Capitalization

Company Name	Market Cap. (Mn KWD)	P/E (X)	ROE* (%)
1- National Bank of Kuwait	6,073.8	16.4	11.7%
2- Kuwait Finance House	4,562.6	20.1	12.0%
3- Ahli United Bank - Bahrain	2,158.5	10.2	17.8%
4- Zain	2,128.9	10.8	15.4%
5- Boubyan Bank	1,667.0	29.7	13.7%
6- Agility (PWC Logistics)	1,297.5	16.0	8.0%
7- Commercial Bank of Kuwait	1,014.0	15.9	8.7%
8- Gulf Bank	914.4	16.1	9.0%
9- Burgan Bank	853.1	10.3	11.0%
10- Mabaneer Co.	684.9	13.0	12.4%
Total	21,355	15.26	12.2%

*: ROE is calculated based on FY2018 net profit & shareholders' equity as of 31-December-18

Top Movers and Most Active Stocks

Today's Top % Gainers	Close (KWD)	Change (KWD)	Percent Change
Senergy Holding Co.	0.025	0.004	16.9%
Livestock Transport & Trading Co.	0.198	0.018	10.0%
Amwal International Investment Co.	0.051	0.005	10.0%
National International Holding Co.	0.076	0.006	9.0%
Al TAMEER Real Estate Investment Co.	0.034	0.003	7.9%

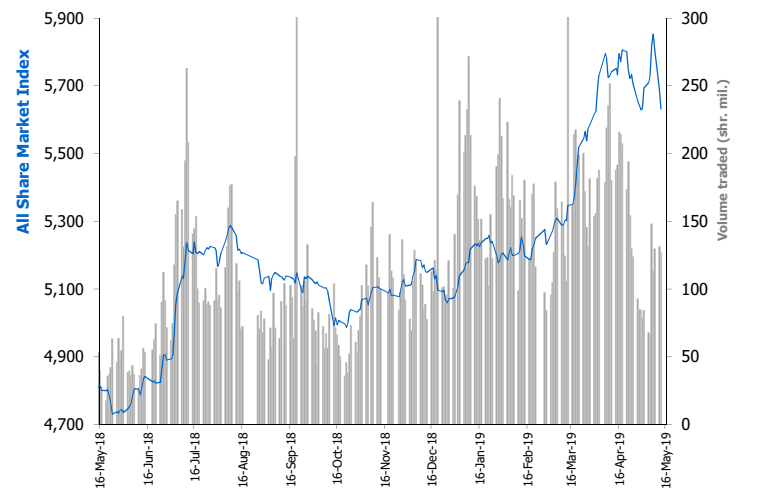
Today's Top % Losers	Close (KWD)	Change (KWD)	Percent Change
Real Estate Trade Centers Co.	0.024	(0.006)	(19.6%)
Al-Argan International Real Estate Co.	0.120	(0.013)	(9.8%)
Arabi Holding Group Co.	0.075	(0.008)	(9.6%)
Gulf Petroleum Investment	0.023	(0.002)	(7.0%)
Abyaar Real Estate Development Co.	0.012	(0.001)	(6.3%)

Today's Most Active by Volume	Close (KWD)	Percent Change	Volume (Shares)
Gulf Bank	0.300	(2.3%)	18,138,251
Kuwait Finance House	0.654	(2.2%)	15,677,895
Kuwait Real Estate Co.	0.073	2.3%	13,005,978
A'ayan Leasing & Investment Co.	0.041	(1.9%)	8,956,150
Ahli United Bank - Bahrain	0.246	(2.8%)	6,512,037

Source: Boursa Kuwait, KAMCO Research

Market Breadth	34	64	77
Benchmark Return	Closing Value	DTD Chg	MTD % Chg
Premier Market Index	6,078.86	(84.33)	(1.4%)
Main Market Index	4,770.46	(8.29)	(0.2%)
All Share Market Index	5,632.49	(59.50)	(1.0%)
Market Cap (KWD Mn)	32,529.11	(345.21)	(1.1%)

Index Performance relative to Volume



Market Trading Data and Volatility

Trading Indicators	Today's Value	DTD Chg	DTD % Chg	Average Daily YTD 2019	Average Daily YTD 2018
Volume (Shrs Mn)	126.9	(4.4)	(3.4%)	163.4	79.9
Value Traded (KWD Mn)	33.3	(0.8)	(2.2%)	31.3	12.0
No. of Trades	5,830	203	3.6%	5,788	3,279

Today's Most Active by Value	Close (KWD)	Percent Change	Value (KWD)
Kuwait Finance House	0.654	(2.2%)	10,312,730
Gulf Bank	0.300	(2.3%)	5,464,048
National Bank of Kuwait	0.931	(0.9%)	2,447,930
Zain	0.492	0.2%	2,330,944
Ahli United Bank - Bahrain	0.246	(2.8%)	1,625,507

Boursa Kuwait - Premier Market

Monday, May 13, 2019

Premier Market Stocks	Closing Price			Market Capitalization			Valuation Multiples				ROE	YTD-19 Price Return	YTD-19 Trading Indicators	
	KWD	DTD Chg. (KWD)	D-T-D Return	KWD Mn	Weight in Premier Index	Weight in Boursa Kuwait	P/E (X)	P/BV (X)	Yield	Beta			Volume (Mn Shrs)	Value (KWD Mn)
▼ National Bank of Kuwait	0.931	(0.008)	(0.9%)	6,074	25.8%	18.7%	16.4	1.92	3.5%	1.34	11.7%	17.2%	499.91	453.04
▼ Gulf Bank	0.300	(0.007)	(2.3%)	914	3.9%	2.8%	16.1	1.45	3.2%	0.93	9.0%	19.0%	1,338.57	385.72
▼ Kuwait International Bank	0.273	(0.005)	(1.8%)	295	1.2%	0.9%	14.1	1.08	3.5%	0.97	7.6%	7.5%	335.84	99.82
▲ Burgan Bank	0.325	0.002	0.6%	853	3.6%	2.6%	10.3	1.13	3.5%	0.97	11.0%	22.8%	277.27	90.33
▼ Kuwait Finance House	0.654	(0.015)	(2.2%)	4,563	19.4%	14.0%	20.1	2.41	2.7%	1.58	12.0%	17.7%	561.98	366.31
▼ Boubyan Bank	0.578	(0.002)	(0.3%)	1,667	7.1%	5.1%	29.7	4.08	1.1%	0.91	13.7%	24.6%	59.41	34.58
▼ Kuwait Projects Co. (Holding)	0.217	(0.002)	(0.9%)	336	1.4%	1.0%	11.9	1.21	5.4%	0.77	10.2%	4.3%	56.03	11.72
▼ Mabanee Co.	0.657	(0.006)	(0.9%)	685	2.9%	2.1%	13.0	1.61	1.7%	1.02	12.4%	14.9%	59.48	37.50
▼ National Industries Group (Holding)	0.235	(0.002)	(0.8%)	336	1.4%	1.0%	16.9	0.95	4.9%	1.33	5.6%	56.2%	554.98	111.74
▲ Boubyan Petrochemical Co.	0.950	0.005	0.5%	508	2.2%	1.6%	NM	1.75	4.6%	0.75	1.9%	(2.6%)	23.51	22.23
▼ Qurain Petrochemicals Industries Co.	0.383	(0.004)	(1.0%)	421	1.8%	1.3%	9.3	0.96	4.0%	0.69	10.4%	6.4%	36.28	13.86
▼ Agility Public Warehousing Co.	0.736	(0.026)	(3.4%)	1,298	5.5%	4.0%	16.0	1.28	1.7%	1.48	8.0%	5.5%	99.82	82.32
▲ Mobile Telecommunications Co.	0.492	0.001	0.2%	2,129	9.0%	6.5%	10.8	1.67	6.1%	1.65	15.4%	9.6%	322.58	151.51
▼ Human Soft Holding Co.	3.410	(0.030)	(0.9%)	417	1.8%	1.3%	13.2	6.22	5.4%	0.41	47.0%	4.0%	14.08	45.27
▼ GFH Financial Group (B.S.C)	0.073	(0.001)	(1.9%)	269	1.1%	0.8%	6.1	0.66	5.9%	1.16	10.8%	(4.9%)	159.46	12.32
▼ Ahli United Bank (B.S.C)	0.246	(0.007)	(2.8%)	2,159	9.2%	6.6%	10.2	1.82	4.7%	0.76	17.8%	34.0%	1,294.17	318.61
▼ Warba Bank	0.232	(0.009)	(3.7%)	348	1.5%	1.1%	27.3	1.79	0.0%	0.89	6.5%	10.5%	302.84	70.37
▼ Mezzan Holding Co.	0.513	(0.010)	(1.9%)	160	0.7%	0.5%	20.8	1.51	3.1%	0.58	7.2%	2.6%	29.78	13.75
▼ Integrated Holding Co.	0.640	(0.010)	(1.5%)	141	0.6%	0.4%	8.2	2.03	6.3%	0.23	24.8%	(23.8%)	23.61	17.86
Subtotal- Premier Market Stocks	5,632.49	(59.50)	-1.05%	23,570	100%	72%	15.0	1.78	3.48%		11.9%	10.9%	6,049.58	2,338.86
Remaining of the Market				8,959		28%	16.9	0.85	4.33%		5.0%		8,660.84	480.62

Boursa Kuwait Daily Bulletin

Monday, May 13, 2019

Company	Reuters Ticker	Valuation Multiples				Price (KWD)		MKT Cap (KWD Mn.)	52 Weeks High (KWD)	52 Weeks Low (KWD)	YTD-19 Return #	Daily Trading Data		YTD-19	
		Trailing P/E (X)	Trailing P/BV (X)	Dividend Yield	Beta	Closing	DTD Change					Volume (Shrs.)	Value (KWD)	Capital Turnover	ROE
▲ Senergy Holding Co.	SENE.KW	NM	0.34	0.00%	1.41	0.025	0.004	5.0	0.037	0.021	(19.2%)	20	0	3.1%	NM
▼ Independent Petroleum Group	IPGK.KW	12.8	0.83	5.50%	0.31	0.419	(0.001)	78.9	0.450	0.379	4.5%	35,485	14,887	2.1%	6.5%
= National Petroleum Services Co.	NAPS.KW	8.5	2.76	6.79%	0.19	1.000	0.000	100.0	1.170	0.715	8.7%	0	0	0.6%	32.6%
▼ The Energy House Co.	ENER.KW	NM	0.93	0.00%	0.94	0.029	(0.000)	21.8	0.051	0.025	(20.1%)	71,110	2,108	2.0%	0.3%
▼ Gulf Petroleum Investment	GPIK.KW	NM	0.24	0.00%	1.23	0.023	(0.002)	10.3	0.033	0.022	(23.7%)	969,228	22,473	107.4%	NM
= Burgan Co. for Drilling, Tdg. & Maint. *	ABAR.KW	8.0	0.34	0.00%	NA	0.090	0.000	21.8	0.123	0.078	(5.3%)	0	0	0.4%	4.3%
Oil & Gas		13.5	0.86	4.68%				237.7			4.5%	1,075,843	39,469		6.4%
▲ Kuwait Foundry Co.	KFDC.KW	33.9	0.92	11.81%	0.44	0.254	0.004	39.1	0.289	0.175	33.0%	4,510	1,089	12.5%	2.7%
▲ Boubyan Petrochemicals Co.*	BPCC.KW	NM	1.75	4.61%	0.75	0.950	0.005	508.1	1.090	0.780	(2.6%)	218,687	206,428	4.4%	1.9%
= Al Kout for Industrial Projects Co.	ALKK.KW	13.5	2.72	5.95%	0.05	0.840	0.000	84.8	0.840	0.362	0.0%	0	0	0.0%	20.2%
▼ Qurain Petrochemical Industries Co. *	ALQK.KW	9.3	0.96	3.95%	0.69	0.383	(0.004)	421.0	0.415	0.321	6.4%	775,012	297,895	3.3%	10.4%
Basic Materials		18.1	1.31	4.72%				1,052.9			2.1%	998,209	505,413		7.3%
▲ Specialities Group Holding Co.	SPEC.KW	7.1	0.38	0.00%	0.36	0.071	0.001	10.6	0.082	0.054	3.8%	76,010	5,321	11.5%	5.4%
▲ Kuwait Cement Co.	KCEM.KW	29.3	1.20	4.60%	0.47	0.317	0.012	232.5	0.444	0.327	(16.4%)	9,289	2,784	0.3%	4.1%
▼ Gulf Cable & Electrical Ind. Co.	CABL.KW	9.2	0.51	7.36%	1.02	0.367	(0.001)	77.0	0.420	0.346	4.6%	8,678	3,193	5.8%	5.5%
= Heavy Eng'g Ind. & Shipbuilding Co.	SHIP.KW	7.4	1.27	5.06%	0.49	0.395	0.000	71.2	0.538	0.307	(8.6%)	317,877	125,217	15.4%	17.2%
▲ Kuwait Portland Cement Co.	PCEM.KW	12.6	1.90	7.69%	0.53	1.300	0.070	130.3	1.459	0.149	14.2%	90,135	114,377	5.8%	15.1%
= Shuaiba Industrial Co.	PAPE.KW	15.1	0.82	11.17%	0.17	0.150	0.000	15.1	0.249	0.012	(20.2%)	0	0	0.2%	5.4%
= Metal & Recycling Co.	MRCK.KW	NM	0.66	0.00%	0.06	0.089	0.000	8.9	0.089	0.012	41.3%	0	0	0.1%	NM
▼ ACICO Industries Co.	ACIC.KW	19.6	0.45	3.56%	0.42	0.140	(0.003)	44.5	0.245	0.150	(16.2%)	63,088	8,845	3.6%	2.3%
= Hilal Cement Co.	HCKK.KW	NM	0.92	0.00%	0.14	0.125	0.000	12.7	0.139	0.067	11.6%	0	0	0.7%	NM
▲ National Industries Co.	NIBM.KW	17.1	0.81	5.12%	0.18	0.188	0.004	67.7	0.202	0.160	(6.0%)	39,042	7,253	0.3%	4.7%
= Equipment Holding Co.	EQUI.KW	NM	0.52	0.00%	1.40	0.025	0.000	3.4	0.034	0.025	(7.8%)	193,450	4,653	18.8%	NM
= National Co. for Consumer Industries	NCCI.KW	NM	0.33	0.00%	NA	0.030	0.000	2.7	0.084	0.035	(31.8%)	0	0	0.4%	0.3%
▼ Salbookh Trading Co.	SALB.KW	NM	0.55	0.00%	0.77	0.048	(0.001)	5.0	0.052	0.036	20.1%	155,500	7,181	29.1%	NM
▼ Agility (PWC Logistics)	AGLT.KW	16.0	1.28	1.67%	1.48	0.736	(0.026)	1,297.5	0.943	0.315	5.5%	1,417,357	1,049,693	5.7%	8.0%
= Educational Holding Group*	EDUK.KW	NM	2.02	4.69%	0.17	0.320	0.000	78.5	0.340	0.057	3.2%	220	70	0.5%	0.4%
▲ National Cleaning Co.	CLEA.KW	11.1	0.45	0.00%	0.94	0.065	0.002	16.2	0.072	0.047	13.2%	53,521	3,328	5.1%	4.0%
▼ Kuwait & Gulf Link Transport Co.	KGLK.KW	6.5	0.35	5.87%	0.95	0.081	(0.003)	22.5	0.128	0.090	(15.4%)	250,025	19,765	12.8%	5.3%
▲ Kuwait Co. For Process Plant Const. & Cont.	KCPC.KW	5.5	0.97	8.37%	0.33	0.231	0.003	23.2	0.260	0.159	0.4%	90,805	20,858	1.7%	17.7%
▼ Humansoft Holding Co.	HUMN.KW	13.2	6.22	5.40%	0.41	3.410	(0.030)	416.8	3.800	2.996	4.0%	92,858	318,376	11.5%	47.0%
= Gulf Franchising Co.	GFCI.KW	NM	0.68	0.00%	NA	0.059	0.000	2.4	0.250	0.013	(15.7%)	0	0	0.0%	NM
▲ National Shooting Co.	SHOOTING.KW	NM	0.20	0.00%	1.79	0.014	0.001	3.9	0.021	0.015	(13.8%)	100,002	1,300	10.3%	NM
= Combined Group Contracting Co.	CGCK.KW	7.2	0.79	7.50%	NA	0.226	0.000	36.9	0.457	0.295	(29.4%)	84,368	18,903	6.4%	10.9%
= United Projects Group	UPAC.KW	7.7	1.43	3.56%	0.09	0.455	0.000	74.8	0.693	0.249	(28.3%)	0	0	0.4%	18.6%
= ALAFCO Aviation Lease & Finance Co.*	ALAF.KW	7.5	0.80	3.82%	0.40	0.262	0.000	249.4	0.372	0.059	(24.9%)	15	4	1.6%	10.7%
▼ Mubarrad Holding Co.	MBRD.KW	5.8	0.48	8.36%	0.85	0.059	(0.001)	9.6	0.080	0.040	(9.5%)	235,157	13,892	31.2%	8.3%
▼ KGL Logistics Co.	LOGK.KW	5.2	0.31	0.00%	0.81	0.042	(0.000)	30.7	0.046	0.040	3.5%	247,022	10,372	26.7%	6.0%
▼ Integrated holding Co.	INTEGRATED.KW	8.2	2.03	6.25%	0.23	0.640	(0.010)	140.8	0.970	0.720	(23.8%)	46,166	29,634	10.7%	24.8%
= Sharjah Cement Co.	SCEM.KW	18.0	0.37	11.11%	0.45	0.072	0.000	43.8	0.090	0.055	(17.1%)	0	0	0.1%	2.0%
= Gulf Cement Co.	GCEM.KW	NM	0.57	13.49%	0.46	0.059	0.000	48.7	0.088	0.059	(12.7%)	0	0	0.4%	NM
= Umm Al-Qaiwain General Investments Co.	QIC.KW	16.4	0.35	11.93%	0.20	0.059	0.000	21.3	0.077	0.052	(11.7%)	0	0	0.4%	2.1%
= Fujairah Cement Industries Co.	FCEM.KW	17.0	0.22	11.19%	0.53	0.054	0.000	19.1	0.077	0.055	(15.6%)	0	0	4.9%	1.3%
= Ras-Al-Khaimah for White Cement Co.	RKWC.KW	28.6	0.49	8.13%	0.19	0.062	0.000	30.8	0.087	0.059	(17.9%)	0	0	0.1%	1.7%
Industrials		13.7	1.07	4.03%				3,248.6			(4.6%)	3,570,585	1,765,017		7.8%

Boursa Kuwait Daily Bulletin

Monday, May 13, 2019

Company	Reuters Ticker	Valuation Multiples				Price (KWD)		MKT Cap (KWD Mn.)	52 Weeks High (KWD)	52 Weeks Low (KWD)	YTD-19 Return #	Daily Trading Data		YTD-19 Capital Turnover	ROE
		Trailing P/E (X)	Trailing P/BV (X)	Dividend Yield	Beta	Closing	DTD Change					Volume (Shrs.)	Value (KWD)		
= Palms Agro Production Co.	PAPK.KW	NM	0.28	24.96%	0.21	0.040	0.000	2.1	0.080	0.037	(33.3%)	0	0	0.6%	NM
▲ Livestock Transport & Trading Co.	CATT.KW	NM	1.10	2.44%	0.38	0.198	0.018	42.9	0.259	0.031	5.3%	500	99	0.9%	NM
= Danah Alsafat Foodstuff Co.	DANK.KW	NM	0.34	0.00%	0.51	0.031	0.000	3.8	0.053	0.036	(18.4%)	10,450	326	12.1%	NM
▼ Mezzan Holding Co.	MEZZ.KW	20.8	1.51	3.06%	0.58	0.513	(0.010)	159.7	0.771	0.431	2.6%	107,433	56,124	9.6%	7.2%
Consumer Goods		57.9	1.28	3.10%				208.5			2.1%	118,383	56,549		2.2%
= Advanced Technology Co.	ATCK.KW	22.6	2.59	2.00%	NA	1.000	0.000	150.0	1.000	0.067	0.0%	0	0	0.0%	11.5%
= Yiacco Medical Co.	YIAC.KW	NM	15.46	0.00%	0.62	0.067	0.000	12.1	0.142	0.080	(37.9%)	0	0	0.0%	NM
= Al-Maidan Clinic For Oral Health Services Co.	MIDAN.KW	53.0	8.69	0.41%	0.01	1.220	0.000	305.0	1.260	1.080	1.7%	0	0	0.1%	16.4%
Health Care		NM	4.98	0.91%				467.1			(0.5%)	0	0		4.8%
= Kuwait National Cinema Co.	KCIN.KW	10.5	1.18	5.29%	0.16	0.870	0.000	87.9	1.090	0.830	(18.6%)	0	0	0.1%	11.2%
= Kuwait Hotels Co.	KHOT.KW	NM	1.16	0.00%	NA	0.100	0.000	5.8	0.130	0.050	(23.1%)	0	0	0.0%	NM
= Sultan Center Food Products Co.	SCFK.KW	12.4	0.72	0.00%	0.71	0.054	0.000	31.0	0.076	0.013	1.3%	0	0	8.6%	5.8%
= Kuwait Cable Vision Co.	KWTV.KW	NM	0.89	0.00%	0.39	0.024	0.000	0.9	0.033	0.007	20.0%	0	0	1.5%	NM
▲ IFA Hotels & Resorts Co.*	IFAH.KW	NM	1.05	0.00%	0.15	0.068	0.003	42.9	0.110	0.054	(24.2%)	21	1	0.2%	NM
▼ Oula Fuel Marketing Co.	OULA.KW	12.3	0.70	4.25%	0.45	0.116	(0.001)	46.9	0.138	0.055	(1.7%)	217,294	25,421	2.2%	5.7%
▲ Kuwait Resorts Co.	MUNK.KW	8.6	0.41	8.90%	0.73	0.056	0.000	11.0	0.067	0.052	(0.2%)	60,000	3,343	36.3%	4.8%
▲ Jazeera Airways Co.	JAZK.KW	26.3	4.63	4.00%	0.28	0.876	0.021	175.2	0.880	0.114	20.0%	96,030	82,569	5.5%	17.6%
▲ Soor Fuel Marketing Co.	SOOR.KW	14.0	0.70	4.20%	0.39	0.118	0.001	47.8	0.139	0.108	2.6%	242,321	28,356	1.9%	5.0%
= Future Kid Entertainment and R.E Co.	KIDK.KW	12.3	0.64	10.47%	NA	0.113	0.000	13.1	0.135	0.088	18.9%	0	0	2.4%	5.2%
= Al Rai Media Group Co.	ALRA.KW	NM	0.73	NM	0.57	0.044	0.000	10.1	0.132	0.047	(28.7%)	0	0	3.4%	NM
▲ Jiyad Holding Co	JIYAD.KW	11.2	0.52	0.00%	0.70	0.057	0.000	19.9	0.103	0.064	(20.6%)	237,879	12,737	36.1%	4.6%
= Al Eid Food Co.	ALEID.KW	3.1	0.27	0.00%	NA	0.044	0.000	4.4	0.077	0.052	(33.3%)	10,000	440	1.1%	8.7%
Consumer Services		NM	1.10	4.75%				496.9			(2.9%)	863,545	152,867		NM
▲ Zain	ZAIN.KW	10.8	1.67	6.10%	1.65	0.492	0.001	2,128.9	0.506	0.367	9.6%	4,783,124	2,330,944	7.5%	15.4%
= National Mobile Telecom Co.	OORE.KW	11.5	0.62	7.31%	0.50	0.680	0.000	342.7	0.897	0.011	(4.8%)	5,500	3,745	0.6%	5.4%
= AAN digital services Co.	AAN.KW	NM	0.36	0.00%	1.60	0.012	0.000	10.5	0.022	0.016	(31.0%)	158,500	1,894	15.2%	NM
▼ Kuwait Telecommunication Co.	VIVA.KW	8.0	2.10	4.94%	0.75	0.809	(0.002)	404.0	0.899	0.683	1.1%	16,989	13,702	0.8%	26.3%
Telecommunications		10.5	1.41	6.06%				2,886.1			6.2%	4,964,113	2,350,284		13.4%
▼ National Bank of Kuwait	NBKK.KW	16.4	1.92	3.53%	1.34	0.931	(0.008)	6,073.8	0.990	0.270	17.2%	2,620,635	2,447,930	7.7%	11.7%
▼ Gulf Bank	GBKK.KW	16.1	1.45	3.17%	0.93	0.300	(0.007)	914.4	0.330	0.233	19.0%	18,138,251	5,464,048	43.9%	9.0%
▼ Commercial Bank of Kuwait	CBKK.KW	15.9	1.39	3.55%	0.72	0.509	(0.003)	1,014.0	0.700	0.299	12.0%	7,950	4,009	0.5%	8.7%
= Ahli Bank of Kuwait	ABKK.KW	11.7	0.84	4.55%	0.61	0.305	0.000	493.8	0.350	0.284	3.4%	0	0	1.0%	7.2%
▼ Ahli United Bank - Kuwait	BKME.KW	12.1	1.44	4.29%	0.76	0.300	(0.007)	618.8	0.369	0.249	6.1%	1,626,895	489,992	3.2%	11.9%
▼ Kuwait International Bank	KIBK.KW	14.1	1.08	3.49%	0.97	0.273	(0.005)	294.5	0.343	0.216	7.5%	5,639,437	1,547,176	31.1%	7.6%
▲ Burgan Bank	BURG.KW	10.3	1.13	3.51%	0.97	0.325	0.002	853.1	0.405	0.241	22.8%	638,034	206,492	10.6%	11.0%
▼ Kuwait Finance House	KFH.KW	20.1	2.41	2.75%	1.58	0.654	(0.015)	4,562.6	0.718	0.499	17.7%	15,677,895	10,312,730	8.1%	12.0%
▼ Boubyan Bank	BOUK.KW	29.7	4.08	1.15%	0.91	0.578	(0.002)	1,667.0	0.630	0.215	24.6%	1,191,987	690,707	2.1%	13.7%
▼ Warba Bank	WARB.KW	27.3	1.79	0.00%	0.89	0.232	(0.009)	348.0	0.265	0.205	10.5%	4,688,916	1,099,752	20.2%	6.5%
▼ Ahli United Bank - Bahrain	AUBK.KW	10.2	1.82	4.72%	0.76	0.246	(0.007)	2,158.5	0.277	0.019	34.0%	6,512,037	1,625,507	14.7%	17.8%
= Ithmaar Bank	ITHMR.KW	NM	1.91	0.00%	1.52	0.022	0.000	67.6	0.038	0.024	(10.8%)	0	0	4.9%	NM
Banks		16.0	1.85	3.23%				19,066.3			18.4%	56,742,037	23,888,345		11.6%

Company	Reuters Ticker	Valuation Multiples				Price (KWD)		MKT Cap (KWD Mn.)	52 Weeks High (KWD)	52 Weeks Low (KWD)	YTD-19 Return #	Daily Trading Data		YTD-19	
		Trailing P/E (X)	Trailing P/BV (X)	Dividend Yield	Beta	Closing	DTD Change					Volume (Shrs.)	Value (KWD)	Capital Turnover	ROE
= Kuwait Insurance Co.	KINS.KW	7.1	0.83	7.21%	0.01	0.330	0.000	64.0	0.427	0.256	(8.3%)	10,000	3,300	1.0%	11.6%
= Gulf Insurance Group	GINS.KW	9.8	1.31	5.51%	0.05	0.625	0.000	116.9	0.730	0.401	(4.6%)	1,010	621	0.1%	13.4%
= Ahleiah Insurance Co.	AINS.KW	9.5	0.85	7.64%	0.21	0.450	0.000	90.0	0.450	0.056	5.4%	0	0	1.4%	9.0%
= Warba Insurance Co.	WINS.KW	16.1	0.35	0.00%	0.62	0.073	0.000	12.6	0.092	0.055	10.2%	0	0	1.3%	2.2%
= Kuwait Reinsurance Co.	KWRE.KW	8.1	0.56	3.23%	NA	0.145	0.000	27.4	0.198	0.037	(21.2%)	0	0	0.3%	6.9%
= First Takaful Insurance Co.	FTIK.KW	5.7	0.55	0.00%	0.12	0.044	0.000	4.7	0.053	0.029	(0.2%)	0	0	0.2%	9.7%
= Wethaq Takaful Insurance Co.	WETH.KW	38.3	0.28	0.00%	0.71	0.030	0.000	3.3	0.045	0.024	7.5%	0	0	14.8%	0.7%
= Bahrain Kuwait Insurance Co.	BKIK.KW	11.3	0.99	12.50%	0.04	0.200	0.000	28.6	0.200	0.200	0.0%	0	0	0.0%	8.8%
Insurance		9.2	0.86	6.45%				347.5			(3.6%)	11,010	3,921		9.3%
▼ Sokouk Holding Co.	SHCK.KW	NM	0.41	0.00%	1.46	0.034	(0.001)	20.2	0.052	0.038	(13.9%)	356,216	12,125	26.7%	NM
▲ Kuwait Real Estate Co.	KREK.KW	10.2	0.52	0.00%	1.36	0.073	0.002	68.8	0.078	0.044	40.0%	13,005,978	944,554	39.5%	5.1%
= United Real Estate Co.	UREK.KW	NM	0.36	0.00%	0.63	0.059	0.000	70.1	0.070	0.055	(1.7%)	0	0	0.3%	NM
▼ National Real Estate Co.	NREK.KW	9.4	0.40	0.00%	1.34	0.075	(0.002)	102.0	0.124	0.080	(17.7%)	141,526	10,486	6.2%	4.2%
▼ Salhia Real Estate Co.	SREK.KW	9.9	1.15	5.75%	0.31	0.335	(0.005)	171.8	0.350	0.324	1.5%	812,660	269,933	1.9%	11.6%
= Tamdeen Real Estate Co.	TAMK.KW	29.4	1.10	3.15%	0.27	0.370	0.000	159.8	0.385	0.126	5.7%	1,990	736	0.4%	3.7%
▼ Ajial Real Estate Entertainment Co.	AREC.KW	10.2	0.20	3.68%	0.38	0.135	(0.002)	25.0	0.159	0.032	0.0%	2,500	338	2.0%	2.0%
= Al Massaleh Real Estate Co.	MREC.KW	NM	0.40	0.00%	0.44	0.036	0.000	8.5	0.049	0.028	(1.9%)	0	0	2.6%	NM
= Arab Real Estate Co.	ARAB.KW	NM	0.28	0.00%	1.41	0.031	0.000	16.0	0.035	0.027	9.0%	71,001	2,137	11.8%	NM
▼ AL-Enma'a Real Estate Co.*	ENMA.KW	NM	0.37	0.00%	0.76	0.036	(0.002)	16.2	0.048	0.030	9.8%	794,300	28,917	35.1%	NM
▼ Mabane Co.	MABK.KW	13.0	1.61	1.72%	1.02	0.657	(0.006)	684.9	0.710	0.076	14.9%	869,121	570,276	5.7%	12.4%
▼ Injazat Real Estate Development Co.	INJA.KW	7.2	0.47	8.16%	0.51	0.084	(0.000)	28.9	0.090	0.010	(2.9%)	12,100	968	1.6%	6.5%
▲ Investors Holding Group Co.	INVK.KW	NM	0.28	0.00%	1.62	0.010	0.000	6.4	0.016	0.012	(16.4%)	4,488,400	45,403	87.8%	NM
= International Resorts Co.	IRCK.KW	6.7	0.35	0.00%	1.46	0.020	0.000	3.1	0.030	0.018	(9.4%)	0	0	1.0%	5.2%
▲ The Commercial Real Estate Co.	TIJK.KW	11.1	0.55	5.52%	0.80	0.092	0.001	160.4	0.098	0.030	(0.5%)	718,652	65,310	5.3%	4.9%
= Sanam Real Estate Co.	SANK.KW	NM	0.64	0.00%	0.47	0.050	0.000	6.0	0.063	0.026	42.7%	0	0	2.8%	NM
▲ A'ayan Real Estate Co.	AYRE.KW	4.5	0.37	7.73%	0.89	0.064	0.000	26.5	0.068	0.043	10.6%	358,379	22,824	10.1%	8.3%
= Aqar Real Estate Investment Co.	AQAR.KW	11.6	0.50	7.54%	NA	0.060	0.000	14.1	0.072	0.024	(2.0%)	0	0	0.4%	4.3%
▼ Kuwait Real Estate Holding Co.	ALAQ.KW	50.7	0.48	0.00%	1.13	0.028	(0.000)	5.3	0.035	0.020	11.2%	35,714	993	1.8%	0.9%
▼ MAZAYA Holding Co.	MAZA.KW	7.8	0.43	13.88%	1.40	0.058	(0.001)	39.6	0.097	0.070	(18.0%)	1,322,583	76,498	33.0%	5.6%
= Tijara Real Estate & Investment Co.	TIJA.KW	19.2	0.47	6.06%	0.70	0.050	0.000	18.3	0.057	0.025	1.0%	0	0	0.5%	2.5%
▲ Al TAMEER Real Estate Investment Co.	AMAR.KW	NM	0.49	0.00%	1.44	0.034	0.003	8.2	0.040	0.026	21.4%	3,665,086	123,801	98.5%	NM
▼ Arkan Al-Kuwait Real Estate Co. *	ARKK.KW	6.8	0.56	10.26%	0.34	0.078	(0.002)	19.6	0.091	0.072	(6.6%)	55,350	4,197	1.6%	8.2%
▼ Al-Argan International Real Estate Co.	ARGK.KW	57.6	0.36	0.00%	0.39	0.120	(0.013)	31.8	0.150	0.012	(11.8%)	25,000	3,000	0.0%	0.6%
▼ Abyaar Real Estate Development Co.	ABYR.KW	NM	0.15	0.00%	1.57	0.012	(0.001)	13.2	0.020	0.015	(21.7%)	3,779,912	45,808	53.1%	NM
= Munshaat Real Estate Projects Co.	MUNS.KW	NM	0.61	0.00%	1.09	0.089	0.000	28.7	0.120	0.031	(11.0%)	0	0	3.0%	NM
▼ First Dubai For Real Estate Development	FIRST.KW	10.5	0.42	0.00%	1.60	0.031	(0.001)	31.0	0.047	0.035	(17.8%)	208,980	6,488	3.5%	4.0%
▼ Kuwait Business Town Real Estate Co.	KBTK.KW	10.1	0.38	7.14%	1.36	0.042	(0.000)	25.1	0.054	0.039	(7.1%)	450,127	18,086	4.0%	3.8%
= Real Estate Asset Management Co.	REAM.KW	35.0	1.13	2.91%	0.01	0.171	0.000	17.9	1.415	0.036	(5.0%)	0	0	0.0%	3.2%
▲ MENA Real Estate Co. *	MENK.KW	NM	0.48	0.00%	0.93	0.038	0.000	5.2	0.050	0.019	6.7%	395,415	14,300	159.1%	NM
▲ Al Mudon International Real Estate Co.	ALMK.KW	NM	0.14	0.00%	1.37	0.019	0.001	1.9	0.032	0.024	(34.0%)	185,850	3,524	12.2%	NM
▼ Real Estate Trade Centers Co.	MARA.KW	NM	0.14	0.00%	0.48	0.024	(0.006)	3.3	0.037	0.018	10.0%	174,800	4,411	20.2%	0.1%
▲ Kuwait Remal Real Estate Co.	REMA.KW	NM	0.45	0.00%	1.01	0.034	0.001	10.4	0.050	0.029	(19.3%)	169,400	5,658	23.5%	NM
= Mashaer Holding Co.	MASHAER.KW	NM	0.59	0.00%	0.26	0.069	0.000	12.4	0.088	0.015	(17.6%)	0	0	117.9%	NM
▼ Effect Real Estate Co.	EFFECT.KW	NM	0.28	0.00%	0.83	0.020	(0.000)	1.6	0.025	0.009	119.8%	889,186	17,784	6.7%	NM
= Ajwan Gulf Real Estate Co.	AJWN.KW	NM	0.21	0.00%	0.42	0.012	0.000	2.5	0.025	0.017	(34.1%)	199,180	2,429	50.5%	NM
= Al Masaken Intl. Real Estate Dev. Co.	MASKN.KW	NM	0.83	0.00%	0.37	0.070	0.000	7.0	0.100	0.036	12.0%	0	0	0.2%	NM
= Dalqan Real Estate Co.	DALQ.KW	NM	2.79	0.00%	NA	0.350	0.000	17.5	0.350	0.179	0.0%	0	0	0.0%	2.2%
= Dar Al Thuraya Real Estate Co.	THURY.KW	32.4	1.76	0.00%	NA	0.179	0.000	26.2	0.220	0.220	(18.6%)	0	0	0.0%	5.4%
Real Estate		28.6	0.68	2.76%				1,915.1			2.8%	33,189,406	2,300,984		2.4%

Company	Reuters Ticker	Valuation Multiples				Price (KWD)		MKT Cap (KWD Mn.)	52 Weeks High (KWD)	52 Weeks Low (KWD)	YTD-19 Return #	Daily Trading Data		YTD-19	
		Trailing P/E (X)	Trailing P/BV (X)	Dividend Yield	Beta	Closing	DTD Change					Volume (Shrs.)	Value (KWD)	Capital Turnover	ROE
= Kuwait Investment Co.	KINV.KW	7.2	0.60	7.77%	0.61	0.128	0.000	70.6	0.139	0.103	(1.5%)	0	0	7.5%	8.4%
▼ Commercial Facilities Co.	FACI.KW	12.6	0.65	7.46%	0.58	0.203	(0.005)	109.0	0.208	0.021	16.0%	157,000	31,876	2.4%	5.1%
▲ Int'l Financial Advisors Co.	IFIN.KW	NM	0.53	0.00%	1.63	0.023	0.001	16.4	0.039	0.021	(18.9%)	398,568	8,987	24.2%	NM
▲ National Investment Co.	NINV.KW	13.6	0.56	5.59%	1.32	0.114	0.001	99.9	0.123	0.070	38.2%	803,435	90,546	14.4%	4.1%
▼ Kuwait Projects Co.(Holding)	KPRO.KW	11.9	1.21	5.41%	0.77	0.217	(0.002)	335.8	0.252	0.033	4.3%	63,896	13,616	3.6%	10.2%
▼ Coast Invest. & Development Co.	COAS.KW	16.5	0.42	0.00%	1.98	0.038	(0.002)	23.7	0.045	0.028	14.2%	5,000	190	8.8%	2.6%
▼ The Securities House Co.	SECH.KW	NM	0.54	0.00%	1.28	0.049	(0.002)	21.8	0.062	0.044	(8.5%)	333,098	16,099	38.1%	0.5%
▼ Arzan Financial Group For Fin. & Invest.	ARZA.KW	9.9	0.24	0.00%	1.15	0.031	(0.000)	25.1	0.038	0.025	5.0%	886,010	27,165	14.1%	2.5%
▼ Kuwait Financial Centre	MARKZ.KW	18.9	0.47	5.56%	0.68	0.090	(0.000)	43.2	0.110	0.034	(10.1%)	2,700	238	0.7%	2.5%
▲ Kuwait & M.E. Financial Inv. Co.	KMEF.KW	49.4	0.63	0.00%	0.75	0.036	0.002	9.5	0.054	0.019	12.5%	20,700	747	13.2%	1.3%
▼ Al-Aman Investment Co.	AMAN.KW	11.2	0.58	0.00%	0.81	0.062	(0.000)	9.3	0.081	0.034	27.3%	644,361	38,764	66.1%	5.2%
▼ First Investment Co.	OLAK.KW	NM	0.26	0.00%	0.96	0.036	(0.001)	23.5	0.045	0.016	(8.8%)	2,438,642	88,078	73.1%	0.3%
▼ Al-Mal Investment Co.	MALK.KW	NM	0.46	0.00%	1.66	0.016	(0.000)	5.0	0.025	0.017	(15.2%)	115,013	1,872	16.7%	NM
▼ Gulf Investment House	GIHK.KW	1.8	0.66	0.00%	1.12	0.059	(0.000)	24.1	0.083	0.014	232.6%	67,501	3,800	8.3%	35.8%
▼ A'ayan Leasing & Investment Co.	AAYA.KW	11.1	0.41	0.00%	1.40	0.041	(0.001)	33.5	0.056	0.028	10.5%	8,956,150	360,787	129.6%	3.7%
▼ Bayan Investment Co.	BAYK.KW	NM	0.42	0.00%	1.62	0.039	(0.001)	15.4	0.052	0.034	(18.8%)	27,777	1,000	2.7%	NM
= Osoul Investment Co.	OSUL.KW	15.9	0.53	9.39%	0.47	0.059	0.000	11.2	0.064	0.050	(2.3%)	0	0	1.3%	3.4%
▼ Kuwait Finance & Investment Co.	KFSK.KW	NM	0.33	0.00%	0.44	0.040	(0.002)	12.9	0.049	0.033	17.6%	29,000	1,149	6.1%	0.4%
= KAMCO Investment Co.	KAMC.KW	8.0	0.58	0.00%	0.12	0.078	0.000	20.5	0.091	0.062	13.0%	13,772	1,074	1.3%	7.2%
▲ National International Holding Co.	NIHK.KW	7.2	0.41	6.05%	0.91	0.076	0.006	16.5	0.081	0.053	23.1%	50	4	4.7%	5.7%
▼ UniCap Investment and Finance	UNICAP.KW	6.3	0.58	5.14%	0.71	0.058	(0.003)	13.9	0.085	0.050	(26.7%)	866,826	50,223	15.1%	9.1%
▼ Al Madar Finance & Investment Co.	MADR.KW	2.2	1.54	0.00%	0.44	0.154	(0.001)	32.9	0.180	0.014	(7.8%)	422,000	64,961	33.4%	69.5%
= Al-Deera Holding	DEER.KW	5.9	0.42	0.00%	1.54	0.014	0.000	2.8	0.026	0.016	(24.3%)	0	0	3.8%	7.2%
▼ Al Salam Group Holding Co.	SAGH.KW	28.4	0.28	0.00%	1.58	0.034	(0.002)	9.0	0.040	0.017	4.4%	568,567	18,428	36.4%	1.0%
= Ekttab Holding Co.	EKTT.KW	NM	0.33	0.00%	1.26	0.017	0.000	5.4	0.029	0.019	(18.7%)	9,999	170	8.6%	NM
▲ Al Madina For Finance & Investment Co.	MADI.KW	NM	0.39	0.00%	1.25	0.018	0.000	7.1	0.030	0.020	(14.6%)	1,077,217	18,553	64.5%	NM
▼ NOOR Financial Investment Co.	NOOR.KW	1.5	0.66	5.68%	0.75	0.088	(0.000)	36.3	0.095	0.046	14.3%	460,766	39,373	36.0%	45.2%
= Tamdeen Investment Co.	TAMI.KW	14.0	0.54	3.98%	0.15	0.300	0.000	103.5	0.349	0.232	7.1%	10,010	3,003	0.7%	3.9%
= Kuwait Bahrain Int'l Exchange Co.	EXCH.KW	14.6	0.61	0.00%	NA	0.086	0.000	4.0	N/A	N/A	0.0%	0	0	0.0%	4.2%
▼ Kuwait Syrian Holding Co.	KSHC.KW	NM	0.48	5.98%	1.56	0.050	(0.001)	8.8	0.082	0.027	25.5%	2,100	102	39.9%	NM
▼ Asiya Capital Investment Co.	ASIYA.KW	25.6	0.40	0.00%	0.89	0.035	(0.001)	28.0	0.044	0.030	2.9%	5,000	175	2.8%	1.5%
▼ Gulf North Africa Holding Co.	GNAH.KW	NM	0.79	0.00%	1.67	0.054	(0.001)	8.1	0.057	0.034	10.2%	1,171	63	14.4%	NM
▲ Amwal International Investment Co.	AMWA.KW	15.0	0.52	0.00%	0.62	0.051	0.005	9.1	0.087	0.049	(18.4%)	1	0	0.1%	3.5%
▼ Alimtiq Investment Group	ALIMK.KW	7.5	0.73	5.81%	0.81	0.132	(0.004)	149.6	0.143	0.122	(1.5%)	970,416	128,626	9.5%	9.7%
= Tamkeen Holding Co.	TAMKE.KW	NM	0.12	0.00%	NA	0.012	0.000	0.8	0.015	0.003	19.2%	0	0	1.1%	NM
= Manazel Holding Co.	MANK.KW	NM	0.61	0.00%	1.73	0.025	0.000	10.7	0.037	0.024	0.8%	0	0	3.7%	NM
▼ National Industries Group	NIND.KW	16.9	0.95	4.86%	1.33	0.235	(0.002)	335.5	0.241	0.147	56.2%	4,993,032	1,170,657	38.9%	5.6%
= Warba Capital Holding Co.	WARBACAP.KW	NM	1.95	0.00%	1.17	0.094	0.000	14.1	0.089	0.019	206.5%	0	0	11.0%	NM
▼ Arabi Holding Group Co.	AGHC.KW	30.3	0.51	0.00%	0.30	0.075	(0.008)	13.0	0.092	0.060	8.7%	11,000	854	1.9%	1.7%
▲ Privatization Holding Co.	KPPC.KW	NM	0.41	8.50%	1.27	0.059	0.001	35.9	0.065	0.018	12.0%	164,886	9,585	18.1%	NM
= Credit Rating & Collection Co.	TAHS.KW	NM	0.55	0.00%	0.04	0.019	0.000	3.1	0.024	0.018	(16.1%)	0	0	0.2%	NM
= Egypt Kuwait Holding Co.	EKHK.KW	18.6	3.11	4.40%	0.36	0.455	0.000	466.1	0.475	0.069	40.0%	0	0	0.2%	16.7%
▼ GFH Financial Group	GFH.KW	6.1	0.66	5.88%	1.16	0.073	(0.001)	268.8	0.113	0.066	(4.9%)	610,452	44,041	4.3%	10.8%
= Inovent	INOV.KW	5.1	0.52	6.67%	0.97	0.075	0.000	21.5	0.092	0.068	(6.3%)	0	0	3.9%	10.3%
= Sanad Holding Co.	SANAD.KW	NM	1.22	0.00%	0.06	0.110	0.000	48.1	0.110	0.031	10.0%	0	0	0.0%	1.4%
= Amar For Finance and Leasing Co.	AMARF.KW	NM	0.36	0.00%	0.09	0.031	0.000	6.2	0.049	0.033	(24.9%)	0	0	0.1%	NM
▲ Al-Manar Financing & Leasing Co.	ALMANAR.KW	18.6	0.37	0.00%	NA	0.039	0.002	12.0	0.075	0.000	(26.7%)	87,020	3,163	7.8%	2.0%
Financial Services		12.0	0.77	4.46%				2,581.3			23.1%	25,223,136	2,237,967		6.4%

Boursa Kuwait Daily Bulletin

Monday, May 13, 2019

Company	Reuters Ticker	Valuation Multiples				Price (KWD)		MKT Cap (KWD Mn.)	52 Weeks High (KWD)	52 Weeks Low (KWD)	YTD-19 Return #	Daily Trading Data		YTD-19 Capital Turnover	ROE
		Trailing P/E (X)	Trailing P/BV (X)	Dividend Yield	Beta	Closing	DTD Change					Volume (Shrs.)	Value (KWD)		
= Automated Systems Co.	ASCK.KW	16.4	0.61	4.94%	NA	0.081	0.000	8.1	0.149	0.066	(25.0%)	7,992	647	0.5%	3.7%
= Osos Holding Group Co.	OSOS.KW	8.3	0.77	9.90%	0.45	0.101	0.000	10.1	0.118	0.079	(1.0%)	97,654	9,847	9.8%	9.2%
= Hayat Communications Co.	HAYK.KW	10.5	0.29	0.00%	1.50	0.031	0.000	2.9	0.080	0.027	(54.0%)	0	0	0.1%	2.7%
Technology		10.6	0.58	6.64%				21.1			(22.7%)	105,646	10,494		5.4%

Boursa Kuwait	15.5	1.37	3.71%				32,529.1			12.1%	126,861,913	33,311,311		8.8%
----------------------	-------------	-------------	--------------	--	--	--	-----------------	--	--	--------------	--------------------	-------------------	--	-------------

Year-to-Date 2019 Top Movers & Most Active Stocks

YTD Top % Gainers	Close (KWD)	Percent Change
Gulf Investment House	0.059	232.6%
Warba Capital Holding Co.	0.094	206.5%
National Industries Group	0.235	56.2%
Sanam Real Estate Co.	0.050	42.7%
Egypt Kuwait Holding Co.	0.455	40.0%

YTD Most Active by Volume	Close (KWD)	Volume (Shrs.)
Gulf Bank	0.300	1,338,573,852
Ahli United Bank - Bahrain	0.246	1,294,166,893
A'ayan Leasing & Investment Co.	0.041	1,055,192,215
Abyaar Real Estate Development Co.	0.012	587,439,103
Kuwait Finance House	0.654	561,976,916

YTD Top % Losers	Close (KWD)	Percent Change
Yiaco Medical Co.	0.067	(37.9%)
Ajwan Gulf Real Estate Co.	0.012	(34.1%)
Al Mudon International Real Estate Co.	0.019	(34.0%)
Al Eid Food Co.	0.044	(33.3%)
AAN Digital Services Co.	0.012	(31.0%)

YTD Most Active by Value	Close (KWD)	Value (KWD)
National Bank of Kuwait	0.931	453,040,176
Gulf Bank	0.300	385,715,189
Kuwait Finance House	0.654	366,313,624
Ahli United Bank - Bahrain	0.246	318,610,049
Zain	0.492	151,507,078

* Different Fiscal Year Company