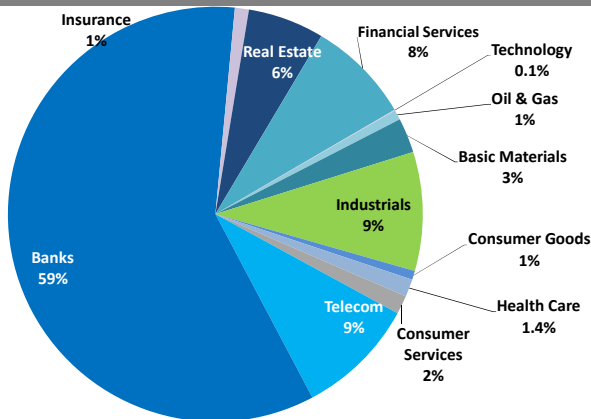


## Boursa Kuwait Daily Report

September 15, 2019

### Sector Weight by Market Cap



### Market Capitalization - Sector Returns

	Market Cap. (KWD Mn)	DTD % Chg	DTD % Chg	MTD % Chg	YTD % Chg
<b>Boursa Kuwait</b>	<b>33,143.1</b>	<b>▼ (0.4%)</b>	<b>(0.4%)</b>	<b>(3.6%)</b>	<b>14.2%</b>
Oil & Gas	254.6	▼ (0.3%)	(0.3%)	3.9%	11.9%
Basic Materials	902.2	▲ 0.6%	0.6%	(1.3%)	(12.5%)
Industrials	3,065.9	▼ (0.3%)	(0.3%)	(3.4%)	(9.9%)
Consumer Goods	230.3	▲ 3.9%	3.9%	1.0%	12.8%
Health Care	457.1	= 0.0%	0.0%	(1.0%)	(2.6%)
Consumer Services	480.5	▼ (0.9%)	(0.9%)	(1.5%)	(6.1%)
Telecommunications	3,083.9	▼ (0.4%)	(0.4%)	(4.2%)	13.5%
Banks	19,646.2	▼ (0.3%)	(0.3%)	(4.4%)	22.0%
Insurance	355.0	▲ 0.2%	0.2%	3.0%	(1.5%)
Real Estate	1,977.0	▼ (0.1%)	(0.1%)	(2.1%)	6.1%
Financial Services	2,667.6	▼ (1.2%)	(1.2%)	(1.5%)	27.2%
Technology	22.7	▼ (0.9%)	(0.9%)	(5.4%)	(16.6%)

### Top 10 Companies by Market Capitalization

Company Name	Market Cap. (Mn KWD)	P/E (X)	ROE* (%)
1- National Bank of Kuwait	6,145.6	15.6	12.4%
2- Kuwait Finance House	4,813.8	20.1	12.7%
3- Ahli United Bank - Bahrain	2,491.9	11.4	18.5%
4- Zain	2,315.0	11.2	17.0%
5- Boubyan Bank	1,548.8	26.1	10.8%
6- Agility (PWC Logistics)	1,262.3	15.0	8.2%
7- Commercial Bank of Kuwait	998.0	14.8	9.2%
8- Gulf Bank	884.0	16.4	8.6%
9- Burgan Bank	868.9	11.3	10.3%
10- Mabaneh Co.	773.6	13.9	12.5%
<b>Total</b>	<b>22,102</b>	<b>15.18</b>	<b>12.6%</b>

\*: ROE is calculated based on TTM 1H-2019 net profit & shareholders' equity as of 30-June-19

### Top Movers and Most Active Stocks

Today's Top % Gainers	Close (KWD)	Change (KWD)	Percent Change
Kuwait & M.E. Financial Inv. Co.	0.095	0.016	20.3%
Al Masaken Intl. Real Estate Dev. Co.	0.069	0.006	10.0%
Al-Argan International Real Estate Co.	0.141	0.012	9.3%
Warba Insurance Co.	0.065	0.005	7.7%
Ras-Al-Khaimah for White Cement Co.	0.063	0.004	6.8%

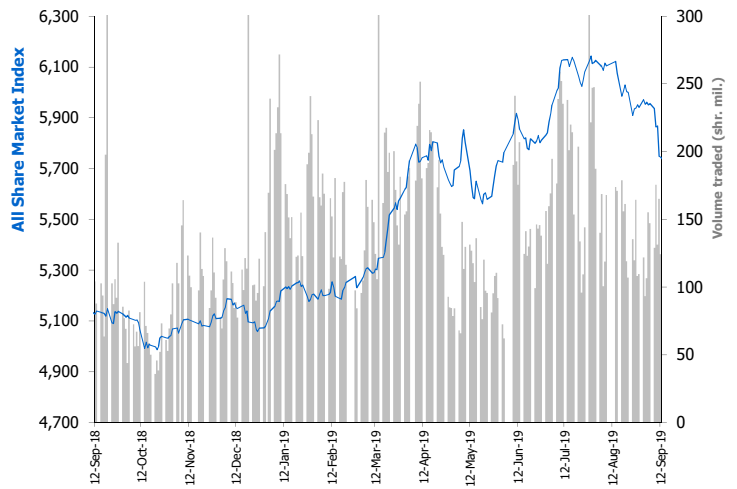
Today's Top % Losers	Close (KWD)	Change (KWD)	Percent Change
Munshaat Real Estate Projects Co.	0.071	(0.008)	(10.5%)
IFA Hotels & Resorts Co.	0.045	(0.005)	(10.0%)
National International Holding Co.	0.060	(0.007)	(9.9%)
Al Rai Media Group Co.	0.037	(0.004)	(9.9%)
United Projects Group	0.402	(0.038)	(8.6%)

Today's Most Active by Volume	Close (KWD)	Percent Change	Volume (Shares)
Kuwait Finance House	0.690	(2.4%)	17,177,811
Ahli United Bank - Bahrain	0.284	0.4%	16,455,713
Kuwait Finance & Investment Co.	0.049	5.2%	8,427,278
Gulf Bank	0.290	1.8%	7,585,480
A'ayan Leasing & Investment Co.	0.053	1.0%	4,977,619

Source: Boursa Kuwait, KAMCO Research

Market Breadth	38	58	79		
Benchmark Return	Closing Value	DTD Chg	DTD % Chg	MTD % Chg	YTD % Chg
Premier Market Index	6,234.50	(16.5)	(0.3%)	(4.5%)	18.4%
Main Market Index	4,733.53	(28.5)	(0.6%)	(1.2%)	(0.1%)
All Share Market Index	5,725.31	(20.3)	(0.4%)	(3.6%)	12.7%
Market Cap (KWD Mn)	33,143.10	(116.4)	(0.4%)	(3.6%)	14.2%

### Index Performance relative to Volume



### Market Trading Data and Volatility

Trading Indicators	Today's Value	DTD Chg	DTD % Chg	Average Daily YTD 2019	Average Daily YTD 2018
Volume (Shrs Mn)	111.9	(12.2)	(9.9%)	158.3	83.7
Value Traded (KWD Mn)	33.4	1.9	6.1%	32.4	15.1
No. of Trades	5,339	(845)	(13.7%)	6,030	3,653

Today's Most Active by Value	Close (KWD)	Percent Change	Value (KWD)
Kuwait Finance House	0.690	(2.4%)	11,853,908
Ahli United Bank - Bahrain	0.284	0.4%	4,678,156
National Bank of Kuwait	0.942	0.6%	3,054,052
Zain	0.535	(0.4%)	2,293,845
Gulf Bank	0.290	1.8%	2,180,713

## Boursa Kuwait - Premier Market

Sunday, September 15, 2019

Premier Market Stocks	Closing Price			Market Capitalization			Valuation Multiples				ROE	YTD-19 Price Return	YTD-19 Trading Indicators	
	KWD	DTD Chg. (KWD)	D-T-D Return	KWD Mn	Weight in Premier Index	Weight in Boursa Kuwait	P/E (X)	P/BV (X)	Yield	Beta			Volume (Mn Shrs)	Value (KWD Mn)
▲ National Bank of Kuwait	0.942	0.006	0.6%	6,146	25.4%	18.5%	15.6	1.93	3.5%	1.32	12.4%	18.6%	835.44	783.03
▲ Gulf Bank	0.290	0.005	1.8%	884	3.6%	2.7%	16.4	1.41	3.3%	0.93	8.6%	15.1%	1,973.70	580.98
= Kuwait International Bank	0.273	0.000	0.0%	295	1.2%	0.9%	15.9	1.08	3.5%	0.98	6.8%	7.5%	704.84	202.04
▲ Burgan Bank	0.331	0.002	0.6%	869	3.6%	2.6%	11.3	1.16	3.4%	1.00	10.3%	25.0%	513.52	171.24
▼ Kuwait Finance House	0.690	(0.017)	(2.4%)	4,814	19.9%	14.5%	20.1	2.56	2.6%	1.58	12.7%	24.2%	1,244.14	861.20
▼ Boubyan Bank	0.537	(0.004)	(0.7%)	1,549	6.4%	4.7%	26.1	2.82	1.2%	0.92	10.8%	15.8%	179.19	103.01
▼ Kuwait Projects Co. (Holding)	0.229	(0.001)	(0.4%)	458	1.9%	1.4%	15.4	1.79	4.0%	0.76	11.6%	10.1%	147.63	32.03
▲ Mabanee Co.	0.742	0.003	0.4%	774	3.2%	2.3%	13.9	1.74	1.5%	1.03	12.5%	29.8%	116.72	79.51
= National Industries Group (Holding)	0.222	0.000	0.0%	317	1.3%	1.0%	8.3	0.86	5.1%	1.35	10.4%	47.5%	1,179.46	259.18
▲ Boubyan Petrochemical Co.	0.773	0.012	1.6%	413	1.7%	1.2%	39.2	1.46	6.3%	0.73	3.7%	(20.7%)	59.63	52.32
▼ Qurain Petrochemicals Industries Co.	0.340	(0.001)	(0.3%)	374	1.5%	1.1%	10.7	0.88	4.5%	0.67	8.2%	(5.6%)	80.20	29.50
▼ Agility Public Warehousing Co.	0.716	(0.001)	(0.1%)	1,262	5.2%	3.8%	15.0	1.22	1.7%	1.49	8.2%	2.7%	246.66	194.23
▼ Mobile Telecommunications Co.	0.535	(0.002)	(0.4%)	2,315	9.6%	7.0%	11.2	1.90	5.6%	1.64	17.0%	19.2%	740.90	382.54
▼ Human Soft Holding Co.	3.131	(0.002)	(0.1%)	383	1.6%	1.2%	11.2	6.21	5.9%	0.43	55.5%	(4.5%)	24.97	80.57
▼ GFH Financial Group (B.S.C)	0.072	(0.001)	(1.9%)	265	1.1%	0.8%	7.2	0.84	6.0%	1.12	11.7%	(6.3%)	272.64	20.43
▲ Ahli United Bank (B.S.C)	0.284	0.001	0.4%	2,492	10.3%	7.5%	11.4	2.11	4.1%	0.80	18.5%	54.6%	2,297.77	592.27
= Warba Bank	0.240	0.000	0.0%	360	1.5%	1.1%	25.6	1.75	0.0%	0.92	6.8%	14.3%	622.92	150.62
▲ Mezzan Holding Co.	0.590	0.023	4.1%	184	0.8%	0.6%	22.5	1.69	2.7%	0.54	7.5%	18.0%	35.83	17.21
▲ Integrated Holding Co.	0.388	0.003	0.8%	85	0.4%	0.3%	7.6	1.32	10.3%	0.39	17.4%	(53.8%)	43.39	27.93
<b>Subtotal- Premier Market Stocks</b>	<b>5,725.31</b>	<b>(20.29)</b>	<b>-0.35%</b>	<b>24,237</b>	<b>100%</b>	<b>73%</b>	<b>14.9</b>	<b>1.83</b>	<b>3.39%</b>		<b>12.3%</b>	<b>12.7%</b>	<b>11,319.57</b>	<b>4,619.83</b>
<b>Remaining of the Market</b>				<b>8,906</b>		<b>27%</b>	<b>17.8</b>	<b>0.84</b>	<b>4.36%</b>		<b>4.7%</b>		<b>16,070.28</b>	<b>984.36</b>

**Boursa Kuwait Daily Bulletin**

Sunday, September 15, 2019

Company	Reuters Ticker	Valuation Multiples				Price (KWD)		MKT Cap (KWD Mn.)	52 Weeks High (KWD)	52 Weeks Low (KWD)	YTD-19 Return #	Daily Trading Data		YTD-19	
		Trailing P/E (X)	Trailing P/BV (X)	Dividend Yield	Beta	Closing	DTD Change					Volume (Shrs.)	Value (KWD)	Capital Turnover	ROE
= Senergy Holding Co.	SENE.KW	NM	0.27	0.00%	<b>1.39</b>	<b>0.020</b>	0.000	<b>3.9</b>	0.034	0.017	(36.7%)	20,000	371	7.1%	NM
= Independent Petroleum Group	IPGK.KW	13.8	0.96	4.77%	<b>0.33</b>	<b>0.483</b>	0.000	<b>91.0</b>	0.490	0.379	20.4%	0	0	2.9%	7.0%
= National Petroleum Services Co.	NAPS.KW	8.8	3.13	6.17%	<b>0.18</b>	<b>1.100</b>	0.000	<b>110.0</b>	1.170	0.810	19.6%	0	0	0.7%	35.5%
= The Energy House Co.	ENER.KW	NM	0.65	0.00%	<b>0.88</b>	<b>0.023</b>	0.000	<b>16.9</b>	0.051	0.018	(38.0%)	200	5	2.9%	NM
▼ Gulf Petroleum Investment	GPIK.KW	NM	0.24	0.00%	<b>1.23</b>	<b>0.022</b>	(0.002)	<b>10.2</b>	0.033	0.020	(24.4%)	27,050	607	120.7%	NM
= Burgan Co. for Drilling, Tdg. & Maint. *	ABAR.KW	10.1	0.35	0.00%	<b>NA</b>	<b>0.094</b>	0.000	<b>22.6</b>	0.123	0.085	(1.6%)	0	0	0.5%	3.5%
<b>Oil &amp; Gas</b>		<b>17.9</b>	<b>0.92</b>	<b>4.37%</b>				<b>254.6</b>			<b>11.9%</b>	<b>47,250</b>	<b>982</b>		<b>5.2%</b>
▲ Kuwait Foundry Co.	KFDC.KW	39.1	0.69	4.06%	<b>0.44</b>	<b>0.419</b>	0.001	<b>30.3</b>	0.508	0.175	3.1%	19,535	8,202	32.3%	1.8%
▲ Boubyan Petrochemicals Co.*	BPCC.KW	39.2	1.46	6.29%	<b>0.73</b>	<b>0.773</b>	0.012	<b>413.4</b>	1.072	0.905	(20.7%)	125,645	96,210	11.1%	3.7%
= Al Kout for Industrial Projects Co.	ALKK.KW	13.5	2.72	5.95%	<b>0.05</b>	<b>0.840</b>	0.000	<b>84.8</b>	0.840	0.336	0.0%	0	0	0.0%	20.2%
▼ Qurain Petrochemical Industries Co. *	ALQK.KW	10.7	0.88	4.45%	<b>0.67</b>	<b>0.340</b>	(0.001)	<b>373.7</b>	0.415	0.329	(5.6%)	175,560	59,606	7.3%	8.2%
<b>Basic Materials</b>		<b>17.2</b>	<b>1.16</b>	<b>5.42%</b>				<b>902.2</b>			<b>(12.5%)</b>	<b>320,740</b>	<b>164,018</b>		<b>6.7%</b>
▲ Specialities Group Holding Co.	SPEC.KW	6.6	0.38	0.00%	<b>0.35</b>	<b>0.072</b>	0.001	<b>10.8</b>	0.082	0.060	5.9%	124,551	8,831	27.7%	5.7%
= Kuwait Cement Co.	KCEM.KW	35.0	0.98	5.38%	<b>0.43</b>	<b>0.271</b>	0.000	<b>198.7</b>	0.380	0.327	(28.5%)	6,020	1,607	0.4%	2.8%
▼ Gulf Cable & Electrical Ind. Co.	CABL.KW	14.3	0.54	6.28%	<b>1.05</b>	<b>0.430</b>	(0.001)	<b>90.3</b>	0.490	0.346	22.5%	69,525	29,540	24.0%	3.8%
▲ Heavy Eng'g Ind. & Shipbuilding Co.	SHIP.KW	7.0	1.28	7.50%	<b>0.48</b>	<b>0.400</b>	0.001	<b>72.1</b>	0.519	0.370	(7.4%)	59,951	23,888	44.3%	18.3%
▼ Kuwait Portland Cement Co.	PCEM.KW	11.5	1.75	8.34%	<b>0.49</b>	<b>1.199</b>	(0.001)	<b>120.2</b>	1.459	0.149	5.4%	500	600	7.6%	15.3%
= Shuaiba Industrial Co.	PAPE.KW	23.6	0.91	6.16%	<b>0.19</b>	<b>0.160</b>	0.000	<b>16.1</b>	0.220	1.20%	(14.9%)	0	0	0.2%	3.8%
= Metal & Recycling Co.	MRCK.KW	NM	0.49	0.00%	<b>0.04</b>	<b>0.060</b>	0.000	<b>6.0</b>	0.089	1.20%	(4.8%)	0	0	0.4%	NM
▼ ACICO Industries Co.	ACIC.KW	NM	0.44	3.61%	<b>0.42</b>	<b>0.138</b>	(0.006)	<b>43.8</b>	0.215	0.150	(17.4%)	35,000	4,845	7.7%	NM
= Hilal Cement Co.	HCKK.KW	21.2	0.77	15.00%	<b>0.15</b>	<b>0.100</b>	0.000	<b>10.1</b>	0.146	0.067	(10.7%)	0	0	1.0%	3.6%
= National Industries Co.	NIBM.KW	16.8	0.74	5.73%	<b>0.18</b>	<b>0.168</b>	0.000	<b>60.5</b>	0.202	0.165	(16.0%)	0	0	0.9%	4.4%
▲ Equipment Holding Co.	EQUI.KW	NM	0.43	0.00%	<b>1.32</b>	<b>0.019</b>	0.000	<b>2.6</b>	0.032	0.025	(29.6%)	3,710	70	26.7%	NM
= National Co. for Consumer Industries	NCCI.KW	NM	0.61	0.00%	<b>NA</b>	<b>0.055</b>	0.000	<b>5.0</b>	0.065	0.065	25.0%	0	0	0.4%	0.3%
▲ Salbookh Trading Co.	SALB.KW	NM	0.53	0.00%	<b>0.77</b>	<b>0.043</b>	0.002	<b>4.5</b>	0.052	0.036	7.3%	395,073	16,336	53.2%	NM
▼ Agility (PWC Logistics)	AGLT.KW	15.0	1.22	1.72%	<b>1.49</b>	<b>0.716</b>	(0.001)	<b>1,262.3</b>	0.943	0.305	2.7%	2,915,506	2,060,002	14.0%	8.2%
= Educational Holding Group*	EDUK.KW	12.0	1.94	4.69%	<b>0.16</b>	<b>0.320</b>	0.000	<b>78.5</b>	0.338	0.054	3.2%	650	208	0.7%	16.2%
▼ National Cleaning Co.	CLEA.KW	8.5	0.41	8.37%	<b>0.91</b>	<b>0.058</b>	(0.002)	<b>14.5</b>	0.072	0.053	1.0%	130,044	7,239	6.3%	4.8%
▼ Kuwait & Gulf Link Transport Co.	KGLK.KW	12.1	0.32	6.27%	<b>0.89</b>	<b>0.076</b>	(0.002)	<b>21.1</b>	0.107	0.090	(20.7%)	99,019	7,465	16.0%	2.6%
= Kuwait Co. For Process Plant Const. & Cont.	KCPC.KW	5.1	0.86	9.21%	<b>0.35</b>	<b>0.210</b>	0.000	<b>21.1</b>	0.259	0.220	(8.7%)	0	0	2.9%	16.7%
▼ Humansoft Holding Co.	HUMN.KW	11.2	6.21	5.88%	<b>0.43</b>	<b>3.131</b>	(0.002)	<b>382.7</b>	3.500	2.996	(4.5%)	232,882	731,169	20.4%	55.5%
= Gulf Franchising Co.	GFCI.KW	NM	1.92	0.00%	<b>NA</b>	<b>0.160</b>	0.000	<b>6.4</b>	0.250	0.010	128.6%	0	0	0.0%	NM
= National Shooting Co.	SHOOTING.KW	NM	0.16	0.00%	<b>1.73</b>	<b>0.011</b>	0.000	<b>3.0</b>	0.018	0.015	(33.1%)	7,000	70	17.0%	NM
▼ Combined Group Contracting Co.	CGCK.KW	6.8	0.81	8.60%	<b>0.06</b>	<b>0.232</b>	(0.001)	<b>37.9</b>	0.400	0.295	(27.5%)	1,250,418	288,261	91.3%	12.0%
▼ United Projects Group	UPAC.KW	7.4	0.93	4.03%	<b>0.05</b>	<b>0.402</b>	(0.038)	<b>66.1</b>	0.660	0.217	(36.7%)	50	20	0.6%	12.5%
▲ ALAFCO Aviation Lease & Finance Co.*	ALAF.KW	14.5	0.79	3.85%	<b>0.41</b>	<b>0.260</b>	0.001	<b>247.5</b>	0.372	0.054	(25.5%)	11	3	13.1%	5.4%
▼ Mubarrad Holding Co.	MBRD.KW	5.7	0.49	8.23%	<b>0.85</b>	<b>0.060</b>	(0.001)	<b>9.8</b>	0.080	0.038	(8.2%)	44,151	2,688	39.7%	8.6%
= KGL Logistics Co.	LOGK.KW	5.7	0.29	0.00%	<b>0.79</b>	<b>0.040</b>	0.000	<b>29.3</b>	0.045	0.040	(1.5%)	350,530	13,891	44.7%	5.1%
▲ Integrated holding Co.	INTEGRATED.KW	7.6	1.32	10.31%	<b>0.39</b>	<b>0.388</b>	0.003	<b>85.4</b>	0.890	0.720	(53.8%)	123,463	47,620	19.7%	17.4%
▼ Sharjah Cement Co.	SCEM.KW	30.4	0.33	12.54%	<b>0.43</b>	<b>0.064</b>	(0.000)	<b>38.8</b>	0.087	0.052	(26.6%)	149,090	8,945	0.6%	1.1%
▼ Gulf Cement Co.	GCEM.KW	NM	0.54	14.55%	<b>0.42</b>	<b>0.055</b>	(0.002)	<b>45.2</b>	0.079	0.058	(19.0%)	70,000	3,892	1.2%	NM
= Umm Al-Qaiwain General Investments Co.	QIC.KW	15.3	0.46	9.74%	<b>0.25</b>	<b>0.072</b>	0.000	<b>26.1</b>	0.091	0.044	8.1%	0	0	0.7%	3.0%
= Fujairah Cement Industries Co.	FCEM.KW	23.2	0.21	11.76%	<b>0.54</b>	<b>0.051</b>	0.000	<b>18.1</b>	0.066	0.053	(19.7%)	0	0	7.1%	0.9%
▲ Ras-Al-Khaimah for White Cement Co.	RKWC.KW	30.9	0.51	7.94%	<b>0.22</b>	<b>0.063</b>	0.004	<b>31.5</b>	0.085	0.059	(15.9%)	256,443	13,825	0.5%	1.7%
<b>Industrials</b>		<b>14.1</b>	<b>1.00</b>	<b>4.42%</b>				<b>3,065.9</b>			<b>(9.9%)</b>	<b>6,323,587</b>	<b>3,271,015</b>		<b>7.1%</b>

**Boursa Kuwait Daily Bulletin**

Sunday, September 15, 2019

Company	Reuters Ticker	Valuation Multiples				Price (KWD)		MKT Cap (KWD Mn.)	52 Weeks High (KWD)	52 Weeks Low (KWD)	YTD-19 Return #	Daily Trading Data		YTD-19	
		Trailing P/E (X)	Trailing P/BV (X)	Dividend Yield	Beta	Closing	DTD Change					Volume (Shrs.)	Value (KWD)	Capital Turnover	ROE
= Palms Agro Production Co.	PAPK.KW	NM	0.46	16.92%	<b>0.28</b>	<b>0.059</b>	0.000	<b>3.1</b>	0.076	0.047	(1.7%)	0	0	0.8%	NM
▲ Livestock Transport & Trading Co.	CATT.KW	NM	1.01	2.58%	<b>0.41</b>	<b>0.187</b>	0.007	<b>40.5</b>	0.213	0.025	(0.5%)	5,000	935	1.9%	NM
▼ Danah Alsafat Foodstuff Co.	DANK.KW	NM	0.32	0.00%	<b>0.56</b>	<b>0.025</b>	(0.000)	<b>3.0</b>	0.046	0.036	(34.6%)	270,485	6,705	78.7%	NM
▲ Mezzan Holding Co.	MEZZ.KW	22.5	1.69	2.66%	<b>0.54</b>	<b>0.590</b>	0.023	<b>183.7</b>	0.703	0.431	18.0%	470,224	266,621	11.5%	7.5%
<b>Consumer Goods</b>		<b>61.9</b>	<b>1.40</b>	<b>2.80%</b>				<b>230.3</b>			<b>12.8%</b>	<b>745,709</b>	<b>274,260</b>		<b>2.3%</b>
= Advanced Technology Co.	ATCK.KW	29.8	2.34	1.67%	NA	<b>0.900</b>	0.000	<b>135.0</b>	1.000	0.067	(10.0%)	0	0	0.0%	7.9%
= Yiacco Medical Co.	YIAC.KW	NM	12.28	0.00%	<b>0.58</b>	<b>0.067</b>	0.000	<b>12.1</b>	0.130	0.080	(37.9%)	0	0	0.0%	NM
= Al-Maidan Clinic For Oral Health Services Co.	MIDAN.KW	48.1	8.91	0.40%	<b>0.00</b>	<b>1.240</b>	0.000	<b>310.0</b>	1.260	1.080	3.3%	0	0	0.2%	18.5%
<b>Health Care</b>		<b>NM</b>	<b>4.89</b>	<b>0.77%</b>				<b>457.1</b>			<b>(2.6%)</b>	<b>0</b>	<b>0</b>		<b>3.7%</b>
= Kuwait National Cinema Co.	KCIN.KW	10.3	1.07	5.83%	<b>0.16</b>	<b>0.790</b>	0.000	<b>79.8</b>	1.090	0.830	(26.1%)	0	0	0.4%	10.4%
= Kuwait Hotels Co.	KHOT.KW	NM	1.17	0.00%	NA	<b>0.100</b>	0.000	<b>5.8</b>	0.130	0.044	(23.1%)	0	0	0.0%	NM
▼ Sultan Center Food Products Co.	SCFK.KW	NM	0.59	0.00%	<b>0.67</b>	<b>0.045</b>	(0.000)	<b>26.0</b>	0.062	0.013	(14.8%)	69,038	3,115	10.9%	NM
▲ Kuwait Cable Vision Co.	KWTV.KW	NM	0.87	0.00%	<b>0.36</b>	<b>0.024</b>	0.004	<b>0.9</b>	0.033	0.008	20.0%	16,160	388	2.3%	NM
▼ IFA Hotels & Resorts Co.*	IFAH.KW	NM	0.76	0.00%	<b>0.16</b>	<b>0.045</b>	(0.005)	<b>28.6</b>	0.098	0.054	(49.4%)	24,740	1,172	0.6%	NM
= Oula Fuel Marketing Co.	OULA.KW	12.4	0.68	4.17%	<b>0.45</b>	<b>0.118</b>	0.000	<b>47.7</b>	0.132	0.050	0.0%	29,059	3,429	4.4%	5.5%
= Kuwait Resorts Co.	MUNK.KW	8.7	0.41	8.62%	<b>0.70</b>	<b>0.058</b>	0.000	<b>11.4</b>	0.067	0.054	3.0%	0	0	47.3%	4.7%
▼ Jazeera Airways Co.	JAZK.KW	16.9	6.18	3.62%	<b>0.27</b>	<b>0.967</b>	(0.002)	<b>193.4</b>	0.990	0.114	32.5%	403	390	10.0%	36.6%
= Soor Fuel Marketing Co.	SOOR.KW	14.0	0.74	4.20%	<b>0.39</b>	<b>0.118</b>	0.000	<b>47.8</b>	0.129	0.110	2.6%	4,635	547	3.9%	5.3%
= Future Kid Entertainment and R.E Co.	KIDK.KW	12.9	0.51	13.74%	NA	<b>0.086</b>	0.000	<b>10.0</b>	0.135	0.088	(9.4%)	0	0	3.0%	4.0%
▼ Al Rai Media Group Co.	ALRA.KW	NM	0.62	NM	<b>0.48</b>	<b>0.037</b>	(0.004)	<b>8.7</b>	0.089	0.041	(38.7%)	36,000	1,365	4.7%	NM
= Jiyad Holding Co	JIYAD.KW	10.3	0.40	0.00%	<b>0.68</b>	<b>0.044</b>	0.000	<b>15.3</b>	0.093	0.064	(38.9%)	0	0	43.1%	3.9%
= Al Eid Food Co.	ALEID.KW	3.6	0.30	0.00%	<b>0.05</b>	<b>0.050</b>	0.000	<b>5.1</b>	0.081	0.060	(23.6%)	120,000	6,048	1.8%	8.2%
<b>Consumer Services</b>		<b>NM</b>	<b>1.08</b>	<b>4.91%</b>				<b>480.5</b>			<b>(6.1%)</b>	<b>300,035</b>	<b>16,454</b>		<b>NM</b>
▼ Zain	ZAIN.KW	11.2	1.90	5.61%	<b>1.64</b>	<b>0.535</b>	(0.002)	<b>2,315.0</b>	0.603	0.435	19.2%	4,338,598	2,293,845	17.1%	17.0%
▼ National Mobile Telecom Co.	OORE.KW	10.3	0.64	7.00%	<b>0.52</b>	<b>0.710</b>	(0.011)	<b>357.9</b>	0.785	0.010	(0.6%)	11,443	8,132	1.9%	6.2%
▲ AAN digital services Co.	AAN.KW	19.2	0.50	0.00%	<b>1.64</b>	<b>0.017</b>	0.000	<b>15.0</b>	0.021	0.016	(1.1%)	586,012	9,934	45.3%	2.6%
= Kuwait Telecommunication Co.	VIVA.KW	8.5	2.06	5.04%	<b>0.71</b>	<b>0.793</b>	0.000	<b>396.0</b>	0.899	0.707	(0.9%)	15,260	12,102	1.6%	24.3%
<b>Telecommunications</b>		<b>10.7</b>	<b>1.54</b>	<b>5.67%</b>				<b>3,083.9</b>			<b>13.5%</b>	<b>4,951,313</b>	<b>2,324,012</b>		<b>14.5%</b>
▲ National Bank of Kuwait	NBKK.KW	15.6	1.93	3.49%	<b>1.32</b>	<b>0.942</b>	0.006	<b>6,145.6</b>	1.024	0.270	18.6%	3,253,332	3,054,052	12.8%	12.4%
▲ Gulf Bank	GBKK.KW	16.4	1.41	3.28%	<b>0.93</b>	<b>0.290</b>	0.005	<b>884.0</b>	0.330	0.244	15.1%	7,585,480	2,180,713	64.8%	8.6%
▲ Commercial Bank of Kuwait	CBKK.KW	14.8	1.37	3.61%	<b>0.70</b>	<b>0.501</b>	0.001	<b>998.0</b>	0.700	0.299	10.2%	256,345	128,273	2.2%	9.2%
= Ahli Bank of Kuwait	ABKK.KW	10.9	0.84	4.51%	<b>0.60</b>	<b>0.308</b>	0.000	<b>498.7</b>	0.350	0.285	4.4%	0	0	1.4%	7.7%
▼ Ahli United Bank - Kuwait	BKME.KW	12.7	1.56	3.93%	<b>0.77</b>	<b>0.327</b>	(0.004)	<b>674.5</b>	0.369	0.248	15.6%	157,848	51,533	5.6%	12.3%
= Kuwait International Bank	KIBK.KW	15.9	1.08	3.49%	<b>0.98</b>	<b>0.273</b>	0.000	<b>294.5</b>	0.343	0.228	7.5%	2,280,837	618,185	65.3%	6.8%
▲ Burgan Bank	BURG.KW	11.3	1.16	3.44%	<b>1.00</b>	<b>0.331</b>	0.002	<b>868.9</b>	0.405	0.249	25.0%	1,994,907	659,466	19.6%	10.3%
▼ Kuwait Finance House	KFH.KW	20.1	2.56	2.61%	<b>1.58</b>	<b>0.690</b>	(0.017)	<b>4,813.8</b>	0.800	0.530	24.2%	17,177,811	11,853,908	17.8%	12.7%
▼ Boubyan Bank	BOUK.KW	26.1	2.82	1.23%	<b>0.92</b>	<b>0.537</b>	(0.004)	<b>1,548.8</b>	0.630	0.215	15.8%	1,122,943	600,951	6.2%	10.8%
= Warba Bank	WARB.KW	25.6	1.75	0.00%	<b>0.92</b>	<b>0.240</b>	0.000	<b>360.0</b>	0.265	0.205	14.3%	1,405,824	336,008	41.5%	6.8%
▲ Ahli United Bank - Bahrain	AUBK.KW	11.4	2.11	4.09%	<b>0.80</b>	<b>0.284</b>	0.001	<b>2,491.9</b>	0.299	0.019	54.6%	16,455,713	4,678,156	26.2%	18.5%
= Ithmaar Bank	ITHMR.KW	NM	2.38	0.00%	<b>1.44</b>	<b>0.022</b>	0.000	<b>67.6</b>	0.032	0.024	(10.8%)	0	0	4.9%	NM
<b>Banks</b>		<b>15.9</b>	<b>1.88</b>	<b>3.13%</b>				<b>19,646.2</b>			<b>22.0%</b>	<b>51,691,040</b>	<b>24,161,245</b>		<b>11.8%</b>

**Boursa Kuwait Daily Bulletin**

Sunday, September 15, 2019

Company	Reuters Ticker	Valuation Multiples				Price (KWD)		MKT Cap (KWD Mn.)	52 Weeks High (KWD)	52 Weeks Low (KWD)	YTD-19 Return #	Daily Trading Data		YTD-19	
		Trailing P/E (X)	Trailing P/BV (X)	Dividend Yield	Beta	Closing	DTD Change					Volume (Shrs.)	Value (KWD)	Capital Turnover	ROE
= Kuwait Insurance Co.	KINS.KW	6.0	0.66	7.15%	0.04	0.333	0.000	64.6	0.427	0.305	(7.5%)	0	0	2.3%	10.9%
= Gulf Insurance Group	GINS.KW	9.5	1.40	5.07%	0.04	0.680	0.000	127.2	0.730	0.401	3.8%	121,583	82,676	4.5%	14.8%
= Ahleiah Insurance Co.	AINS.KW	8.7	0.84	8.00%	0.19	0.430	0.000	86.0	0.450	0.056	0.7%	5,000	2,150	1.9%	9.6%
▲ Warba Insurance Co.	WINS.KW	7.6	0.29	0.00%	0.57	0.065	0.005	11.2	0.085	0.061	(2.0%)	54,412	3,520	2.3%	3.9%
= Kuwait Reinsurance Co.	KWRE.KW	6.9	0.58	2.97%	0.01	0.158	0.000	29.8	0.198	0.036	(14.1%)	0	0	0.3%	8.4%
= First Takaful Insurance Co.	FTIK.KW	5.1	0.45	0.00%	0.12	0.043	0.000	4.5	0.053	0.027	(3.6%)	0	0	1.7%	8.8%
= Wethaq Takaful Insurance Co.	WETH.KW	68.9	0.27	0.00%	0.68	0.028	0.000	3.1	0.045	0.024	0.4%	0	0	15.3%	0.4%
= Bahrain Kuwait Insurance Co.	BKIK.KW	10.0	0.99	12.50%	0.04	0.200	0.000	28.6	N/A	N/A	0.0%	0	0	0.0%	9.9%
<b>Insurance</b>		<b>8.1</b>	<b>0.82</b>	<b>6.31%</b>				<b>355.0</b>			<b>(1.5%)</b>	<b>180,995</b>	<b>88,347</b>		<b>10.1%</b>
▼ Sokouk Holding Co.	SHCK.KW	NM	0.40	0.00%	1.39	0.033	(0.001)	19.3	0.048	0.038	(17.7%)	204,506	6,647	33.4%	NM
▼ Kuwait Real Estate Co.	KREK.KW	9.3	0.57	0.00%	1.32	0.081	(0.001)	76.7	0.090	0.044	56.1%	385,500	30,910	61.7%	6.2%
▲ United Real Estate Co.	UREK.KW	NM	0.38	0.00%	0.64	0.062	0.000	73.9	0.066	0.057	3.7%	775,000	48,130	2.2%	NM
▼ National Real Estate Co.	NREK.KW	10.9	0.43	0.00%	1.33	0.082	(0.000)	111.4	0.108	0.080	(10.1%)	143,546	11,607	12.5%	3.9%
= Salhia Real Estate Co.	SREK.KW	10.7	1.16	5.74%	0.30	0.336	0.000	172.3	0.350	0.324	1.8%	0	0	3.8%	10.9%
= Tamdeen Real Estate Co.	TAMK.KW	17.5	0.74	3.24%	0.26	0.300	0.000	129.6	0.400	0.123	(14.3%)	0	0	0.5%	4.2%
▼ Ajial Real Estate Entertainment Co.	AREC.KW	12.8	0.19	3.85%	0.37	0.129	(0.007)	23.9	0.152	0.031	(4.4%)	10,580	1,365	3.1%	1.5%
= Al Massaleh Real Estate Co.	MREC.KW	NM	0.40	0.00%	0.42	0.038	0.000	8.9	0.049	0.025	3.6%	0	0	3.6%	NM
▼ Arab Real Estate Co.	ARAB.KW	NM	0.24	0.00%	1.36	0.026	(0.000)	13.2	0.035	0.027	(10.1%)	216,350	5,623	26.6%	NM
= AL-Enma'a Real Estate Co.*	ENMA.KW	NM	0.46	0.00%	0.77	0.046	0.000	20.6	0.050	0.030	40.1%	0	0	60.9%	NM
▲ Mabaneer Co.	MABK.KW	13.9	1.74	1.52%	1.03	0.742	0.003	773.6	0.800	0.074	29.8%	273,648	202,079	11.2%	12.5%
= Injazat Real Estate Development Co.	INJA.KW	6.7	0.46	8.52%	0.50	0.080	0.000	27.7	0.090	0.008	(7.0%)	0	0	2.5%	6.9%
▼ Investors Holding Group Co.	INVK.KW	NM	0.23	0.00%	1.59	0.009	(0.000)	5.7	0.014	0.012	(24.6%)	1,674,800	15,530	128.4%	NM
▼ International Resorts Co.	IRCK.KW	2.5	0.21	0.00%	1.40	0.013	(0.000)	2.0	0.030	0.018	(41.5%)	19,000	249	3.4%	8.3%
▼ The Commercial Real Estate Co.	TIJK.KW	12.3	0.56	5.46%	0.78	0.093	(0.000)	162.3	0.102	0.030	0.7%	115,645	10,709	7.6%	4.6%
= Sanam Real Estate Co.	SANK.KW	NM	0.47	0.00%	0.44	0.038	0.000	4.6	0.050	0.028	8.1%	0	0	3.4%	NM
▼ A'ayan Real Estate Co.	AYRE.KW	3.8	0.37	7.82%	0.86	0.063	(0.001)	26.2	0.068	0.055	9.4%	596,150	37,642	16.5%	9.7%
= Aqar Real Estate Investment Co.	AQAR.KW	16.1	0.66	5.82%	NA	0.078	0.000	18.2	0.082	0.023	27.0%	0	0	2.9%	4.1%
= Kuwait Real Estate Holding Co.	ALAQ.KW	52.3	0.47	0.00%	0.99	0.028	0.000	5.3	0.032	0.020	10.8%	0	0	3.4%	0.9%
▼ MAZAYA Holding Co.	MAZA.KW	10.9	0.40	15.11%	1.36	0.053	(0.001)	36.3	0.081	0.070	(24.7%)	2,627,813	138,072	49.4%	3.6%
= Tijara Real Estate & Investment Co.	TIJA.KW	16.5	0.40	4.76%	0.64	0.042	0.000	15.5	0.056	0.017	(14.3%)	0	0	2.2%	2.4%
▲ Al TAMEER Real Estate Investment Co.	AMAR.KW	7.5	0.26	0.00%	1.37	0.019	0.001	4.5	0.046	0.026	(33.2%)	838,794	14,840	134.9%	3.5%
= Arkan Al-Kuwait Real Estate Co. *	ARKK.KW	16.3	0.55	10.24%	0.34	0.078	0.000	19.6	0.091	0.072	(6.5%)	0	0	3.1%	3.4%
▲ Al-Argan International Real Estate Co.	ARGK.KW	67.6	0.42	3.42%	0.39	0.141	0.012	37.4	0.176	0.012	3.7%	10	1	0.1%	0.6%
▲ Abyaar Real Estate Development Co.	ABYR.KW	NM	0.23	0.00%	1.57	0.014	0.000	15.3	0.019	0.015	(9.2%)	2,265,860	30,172	90.9%	NM
▼ Munshaat Real Estate Projects Co.	MUNS.KW	NM	0.50	0.00%	1.03	0.071	(0.008)	22.8	0.120	0.026	(29.3%)	30,025	2,123	4.2%	NM
▼ First Dubai For Real Estate Development	FIRST.KW	15.7	0.43	0.00%	1.56	0.032	(0.001)	32.2	0.043	0.035	(14.6%)	1,024,510	32,915	8.5%	2.8%
▲ Kuwait Business Town Real Estate Co.	KBTK.KW	8.2	0.37	7.27%	1.30	0.039	0.001	24.7	0.052	0.044	(8.7%)	65,766	2,585	6.1%	4.5%
= Real Estate Asset Management Co.	REAM.KW	20.9	0.64	4.97%	0.03	0.095	0.000	10.5	0.220	0.033	(44.4%)	0	0	2.5%	3.1%
▲ MENA Real Estate Co. *	MENK.KW	NM	0.26	0.00%	0.95	0.039	0.001	5.3	0.050	0.017	9.6%	2,695,110	103,133	254.2%	NM
▼ Al Mudon International Real Estate Co.	ALMK.KW	NM	0.13	0.00%	1.33	0.017	(0.001)	1.7	0.032	0.020	(39.9%)	66,250	1,178	28.1%	NM
▼ Real Estate Trade Centers Co.	MARA.KW	NM	0.11	0.00%	0.52	0.025	(0.000)	3.3	0.037	0.019	11.4%	37,446	839	23.9%	NM
▼ Kuwait Remal Real Estate Co.	REMAK.KW	NM	0.34	0.00%	1.02	0.025	(0.001)	7.6	0.050	0.029	(40.7%)	610,010	14,875	46.9%	NM
▲ Mashaer Holding Co.	MASHAER.KW	NM	0.54	0.00%	0.29	0.069	0.000	12.3	0.088	0.015	(18.2%)	444,996	30,268	185.1%	NM
= Effect Real Estate Co.	EFFECT.KW	NM	0.29	0.00%	0.83	0.021	0.000	1.7	0.026	0.009	125.3%	0	0	17.3%	NM
▼ Ajwan Gulf Real Estate Co.	AJWN.KW	NM	0.23	0.00%	0.48	0.013	(0.000)	2.8	0.024	0.017	(26.9%)	1,459,000	19,377	118.1%	NM
▲ Al Masaken Intl. Real Estate Dev. Co.	MASKN.KW	NM	0.84	0.00%	0.35	0.069	0.006	6.9	0.100	0.036	11.0%	30	2	0.2%	NM
= Dalqan Real Estate Co.	DALQ.KW	NM	2.73	0.00%	NA	0.350	0.000	17.5	0.350	0.162	0.0%	0	0	0.0%	2.1%
= Dar Al Thuraya Real Estate Co.	THURY.KW	20.9	1.53	0.00%	NA	0.162	0.000	23.7	0.198	0.000	(26.4%)	0	0	0.0%	7.3%
<b>Real Estate</b>		<b>36.0</b>	<b>0.69</b>	<b>2.68%</b>				<b>1,977.0</b>			<b>6.1%</b>	<b>16,580,345</b>	<b>760,869</b>		<b>1.9%</b>

**Boursa Kuwait Daily Bulletin**

Sunday, September 15, 2019

Company	Reuters Ticker	Valuation Multiples				Price (KWD)		MKT Cap (KWD Mn.)	52 Weeks High (KWD)	52 Weeks Low (KWD)	YTD-19 Return #	Daily Trading Data		YTD-19	
		Trailing P/E (X)	Trailing P/BV (X)	Dividend Yield	Beta	Closing	DTD Change					Volume (Shrs.)	Value (KWD)	Capital Turnover	ROE
▲ Kuwait Investment Co.	KINV.KW	5.4	0.64	7.10%	0.63	0.140	0.002	77.2	0.147	0.117	7.7%	73,015	10,076	19.8%	11.9%
▼ Commercial Facilities Co.	FACI.KW	7.5	0.66	8.30%	0.56	0.194	(0.005)	104.1	0.211	0.016	10.9%	17,990	3,490	3.5%	8.8%
▲ Int'l Financial Advisors Co.	IFIN.KW	NM	0.66	0.00%	1.65	0.053	0.000	14.2	0.054	0.021	89.7%	533,988	28,166	95.5%	NM
= National Investment Co.	NINV.KW	10.1	0.62	4.94%	1.34	0.129	0.000	113.0	0.145	0.070	56.4%	17,000	2,193	27.4%	6.2%
▼ Kuwait Projects Co.(Holding)	KPRO.KW	15.4	1.79	3.97%	0.76	0.229	(0.001)	458.0	0.235	0.031	10.1%	927,655	212,993	7.4%	11.6%
▲ Coast Invest. & Development Co.	COAS.KW	15.9	0.38	0.00%	1.88	0.033	0.000	20.9	0.045	0.028	0.6%	255,084	8,243	14.3%	2.4%
= The Securities House Co.	SECH.KW	NM	0.49	0.00%	1.27	0.045	0.000	20.0	0.062	0.046	(16.0%)	105,379	4,679	48.7%	0.4%
▼ Arzan Financial Group For Fin. & Invest.	ARZA.KW	3.9	0.21	0.00%	1.13	0.026	(0.000)	21.0	0.038	0.025	(12.4%)	1,751,893	45,481	122.9%	5.5%
= Kuwait Financial Centre	MARKZ.KW	10.5	0.50	5.10%	0.65	0.098	0.000	47.1	0.110	0.032	(2.0%)	888,419	86,529	15.7%	4.8%
▲ Kuwait & M.E. Financial Inv. Co.	KMEF.KW	NM	1.62	0.00%	0.77	0.095	0.016	25.0	0.100	0.026	196.6%	2,729,550	238,789	38.9%	2.0%
▼ Al-Aman Investment Co.	AMAN.KW	8.6	0.50	0.00%	0.78	0.057	(0.000)	8.5	0.081	0.033	16.4%	75,000	4,268	84.8%	5.8%
▼ First Investment Co.	OLAK.KW	NM	0.25	0.00%	0.95	0.034	(0.000)	21.8	0.045	0.012	(15.4%)	345,831	11,505	115.5%	NM
▲ Al-Mal Investment Co.	MALK.KW	NM	0.51	0.00%	1.63	0.013	0.000	4.1	0.025	0.017	(30.9%)	940,000	12,492	31.1%	NM
▲ Gulf Investment House	GIHK.KW	1.4	0.53	0.00%	1.08	0.047	0.002	19.3	0.083	0.014	166.3%	19,574	928	10.1%	36.8%
▲ A'ayan Leasing & Investment Co.	AAYA.KW	NM	0.55	0.00%	1.41	0.053	0.001	43.1	0.061	0.031	41.8%	4,977,619	263,020	228.0%	0.1%
= Bayan Investment Co.	BAYK.KW	NM	0.46	0.00%	1.56	0.042	0.000	16.4	0.051	0.034	(13.5%)	0	0	4.4%	NM
= Osoul Investment Co.	OSUL.KW	8.2	0.60	7.82%	0.46	0.071	0.000	13.4	0.073	0.053	17.4%	0	0	3.2%	7.4%
▲ Kuwait Finance & Investment Co.	KFSK.KW	NM	0.40	0.00%	0.47	0.049	0.002	15.7	0.050	0.033	43.5%	8,427,278	400,193	44.6%	0.4%
▼ KAMCO Investment Co.	KAMC.KW	7.3	0.69	0.00%	0.14	0.090	(0.002)	23.7	0.106	0.062	30.4%	70	6	2.1%	9.4%
▼ National International Holding Co.	NIHK.KW	5.8	0.32	7.67%	1.00	0.060	(0.007)	13.1	0.081	0.041	(2.9%)	100	6	8.1%	5.6%
▼ UniCap Investment and Finance	UNICAP.KW	NM	0.43	7.09%	0.70	0.042	(0.004)	10.1	0.085	0.058	(46.8%)	159,862	6,731	21.0%	NM
▲ Al Madar Finance & Investment Co.	MADR.KW	7.7	1.09	0.00%	0.44	0.110	0.002	23.5	0.180	0.010	(34.1%)	580,000	63,700	58.9%	14.2%
▼ Al-Deera Holding	DEER.KW	2.3	0.48	0.00%	1.51	0.012	(0.000)	2.4	0.026	0.016	(33.5%)	133,502	1,593	10.8%	20.9%
▼ Al Salam Group Holding Co.	SAGH.KW	NM	0.28	0.00%	1.58	0.032	(0.000)	8.5	0.043	0.013	(1.2%)	1,632,339	51,779	165.1%	NM
= Ekttab Holding Co.	EKTT.KW	NM	0.37	0.00%	1.27	0.017	0.000	5.3	0.025	0.019	(20.1%)	300,005	4,800	15.8%	NM
= Al Madina For Finance & Investment Co.	MADI.KW	NM	0.52	0.00%	1.26	0.017	0.000	6.9	0.027	0.020	(17.1%)	300,350	5,086	114.6%	NM
▼ NOOR Financial Investment Co.	NOOR.KW	1.5	0.63	6.09%	0.75	0.082	(0.002)	33.9	0.100	0.050	6.6%	189,786	15,519	51.1%	41.7%
= Tamdeen Investment Co.	TAMI.KW	11.7	0.46	3.68%	0.13	0.325	0.000	112.1	0.349	0.232	16.1%	0	0	0.8%	3.9%
= Kuwait Bahrain Int'l Exchange Co.	EXCH.KW	10.9	0.60	0.00%	NA	0.086	0.000	4.0	N/A	N/A	0.0%	0	0	0.0%	5.5%
▼ Kuwait Syrian Holding Co.	KSHC.KW	NM	0.33	8.50%	1.52	0.035	(0.002)	6.2	0.082	0.033	(11.8%)	650,910	23,348	52.6%	NM
= Asiya Capital Investment Co.	ASIYA.KW	NM	0.39	0.00%	0.86	0.034	0.000	27.4	0.039	0.030	0.9%	2,365	81	4.4%	0.3%
= Gulf North Africa Holding Co.	GNAH.KW	NM	0.78	0.00%	1.59	0.059	0.000	8.8	0.063	0.046	19.4%	0	0	26.4%	NM
= Amwal International Investment Co.	AMWA.KW	11.7	0.55	0.00%	0.63	0.055	0.000	9.9	0.087	0.056	(11.3%)	0	0	0.2%	4.7%
= Alimtiq Investment Group	ALIMK.KW	9.5	0.73	6.04%	0.84	0.127	0.000	144.0	0.147	0.123	(5.2%)	241,045	30,265	54.1%	7.6%
= Tamkeen Holding Co.	TAMKE.KW	NM	0.05	0.00%	NA	0.005	0.000	0.3	0.013	0.007	(47.5%)	0	0	12.2%	NM
▲ Manazel Holding Co.	MANK.KW	NM	0.74	0.00%	1.69	0.030	0.000	13.1	0.033	0.024	23.1%	158,000	4,580	17.8%	NM
= National Industries Group	NIND.KW	8.3	0.86	5.15%	1.35	0.222	0.000	317.0	0.261	0.151	47.5%	3,225,531	712,560	82.6%	10.4%
▼ Warba Capital Holding Co.	WARBACAP.KW	NM	2.30	0.00%	1.14	0.099	(0.007)	14.9	0.115	0.019	223.5%	222	22	12.8%	NM
▼ Arabi Holding Group Co.	AGHC.KW	59.4	0.54	0.00%	0.27	0.080	(0.001)	13.8	0.092	0.060	15.2%	190,100	15,083	5.7%	0.9%
▼ Privatization Holding Co.	KPPC.KW	NM	0.39	9.03%	1.25	0.055	(0.001)	33.8	0.065	0.013	5.5%	39,099	2,079	21.4%	NM
▲ Credit Rating & Collection Co.	TAHS.KW	NM	1.05	0.00%	0.02	0.035	0.002	5.8	0.037	0.019	57.0%	14,500	473	0.4%	NM
▼ Egypt Kuwait Holding Co.	EKHK.KW	16.4	2.84	4.71%	0.35	0.425	(0.025)	435.4	0.475	0.063	30.8%	20,000	8,500	0.2%	17.3%
▼ GFH Financial Group	GFH.KW	7.2	0.84	5.96%	1.12	0.072	(0.001)	265.1	0.103	0.063	(6.3%)	815,833	58,842	7.4%	11.7%
= Inovent	INOV.KW	7.2	0.44	7.96%	0.96	0.063	0.000	18.0	0.089	0.080	(21.5%)	0	0	8.0%	6.1%
= Al Bareeq Holding	BAREEQ.KW	48.0	1.15	0.00%	0.05	0.108	0.000	47.2	0.110	0.025	8.0%	0	0	0.0%	2.4%
= Amar For Finance and Leasing Co.	AMARF.KW	NM	0.48	0.00%	NA	0.041	0.000	8.2	0.066	0.033	0.0%	0	0	1.5%	NM
= Al-Manar Financing & Leasing Co.	ALMANAR.KW	21.6	0.37	0.00%	NA	0.040	0.000	12.3	0.075	0.000	(25.0%)	0	0	9.3%	1.7%
<b>Financial Services</b>		<b>12.0</b>	<b>0.81</b>	<b>4.33%</b>				<b>2,667.6</b>			<b>27.2%</b>	<b>30,738,894</b>	<b>2,338,100</b>		<b>6.8%</b>

**Boursa Kuwait Daily Bulletin**

Sunday, September 15, 2019

Company	Reuters Ticker	Valuation Multiples				Price (KWD)		MKT Cap (KWD Mn.)	52 Weeks High (KWD)	52 Weeks Low (KWD)	YTD-19 Return #	Daily Trading Data		YTD-19 Capital Turnover	ROE
		Trailing P/E (X)	Trailing P/BV (X)	Dividend Yield	Beta	Closing	DTD Change					Volume (Shrs.)	Value (KWD)		
= Automated Systems Co.	ASCK.KW	NM	0.55	5.63%	<b>0.00</b>	<b>0.071</b>	0.000	<b>7.1</b>	0.132	0.066	(34.3%)	2,801	199	0.7%	NM
▼ Osos Holding Group Co.	OSOS.KW	6.7	0.77	9.90%	<b>0.42</b>	<b>0.101</b>	(0.002)	<b>10.1</b>	0.118	0.085	(1.0%)	19,520	1,972	12.4%	11.6%
= Hayat Communications Co.	HAYK.KW	13.3	0.55	0.00%	<b>1.65</b>	<b>0.060</b>	0.000	<b>5.6</b>	0.100	0.025	(11.8%)	10	1	1.3%	4.2%
<b>Technology</b>		<b>12.9</b>	<b>0.63</b>	<b>6.15%</b>				<b>22.7</b>			<b>(16.6%)</b>	<b>22,331</b>	<b>2,171</b>		<b>4.9%</b>

<b>Boursa Kuwait</b>	<b>15.6</b>	<b>1.39</b>	<b>3.65%</b>				<b>33,143.1</b>			<b>14.2%</b>	<b>111,902,239</b>	<b>33,401,472</b>		<b>8.9%</b>
----------------------	-------------	-------------	--------------	--	--	--	-----------------	--	--	--------------	--------------------	-------------------	--	-------------

**Year-to-Date 2019 Top Movers & Most Active Stocks**

YTD Top % Gainers	Close (KWD)	Percent Change
Warba Capital Holding Co.	<b>0.099</b>	<b>223.5%</b>
Kuwait & M.E. Financial Inv. Co.	<b>0.095</b>	<b>196.6%</b>
Gulf Investment House	<b>0.047</b>	<b>166.3%</b>
Int'l Financial Advisors Co.	<b>0.053</b>	<b>89.7%</b>
Credit Rating & Collection Co.	<b>0.035</b>	<b>57.0%</b>

YTD Top % Losers	Close (KWD)	Percent Change
Integrated holding Co.	<b>0.388</b>	<b>(53.8%)</b>
IFA Hotels & Resorts Co.	<b>0.045</b>	<b>(49.4%)</b>
UniCap Investment and Finance	<b>0.042</b>	<b>(46.8%)</b>
Real Estate Asset Management Co.	<b>0.095</b>	<b>(44.4%)</b>
International Resorts Co.	<b>0.013</b>	<b>(41.5%)</b>

YTD Most Active by Volume	Close (KWD)	Volume (Shrs.)
Ahli United Bank - Bahrain	<b>0.284</b>	<b>2,297,774,204</b>
Gulf Bank	<b>0.290</b>	<b>1,973,702,295</b>
A'ayan Leasing & Investment Co.	<b>0.053</b>	<b>1,856,171,331</b>
Kuwait Finance House	<b>0.690</b>	<b>1,244,143,412</b>
National Industries Group	<b>0.222</b>	<b>1,179,460,471</b>

YTD Most Active by Value	Close (KWD)	Value (KWD)
Kuwait Finance House	<b>0.690</b>	<b>861,198,481</b>
National Bank of Kuwait	<b>0.942</b>	<b>783,026,408</b>
Ahli United Bank - Bahrain	<b>0.284</b>	<b>592,265,199</b>
Gulf Bank	<b>0.290</b>	<b>580,978,268</b>
Zain	<b>0.535</b>	<b>382,537,407</b>

\* Different Fiscal Year Company