

EGX 30

RESISTANCE SUPPORT

6,000 **5,765**

TARGET STOP-LOSS

6,500 **5,765**

Trend Status Summary

Trend	Current	Forecast
MT	Bullish	Bullish
ST	Bullish	Bullish

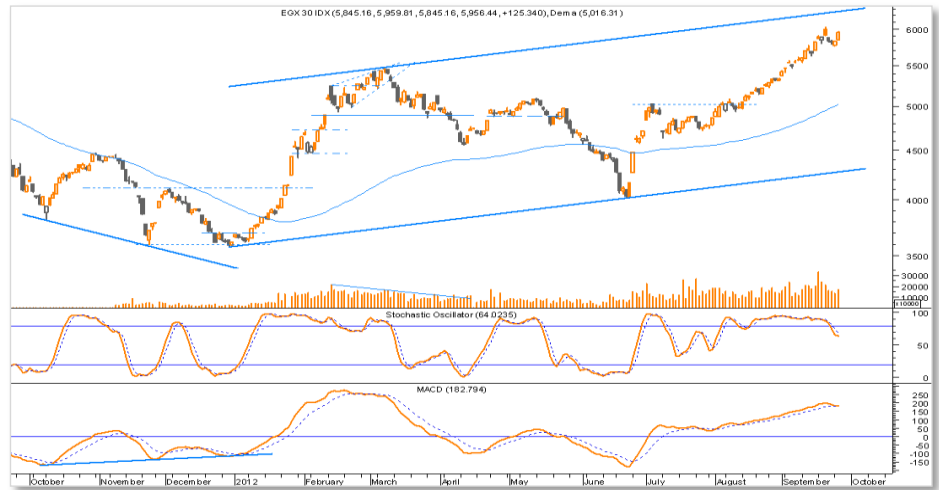
Close 5,969.39

% Change ↑0.22%

52-wk High 5,666.55

52-wk Low 3,578.12

Market hits one-week high



- ▶ The EGX 30 rose 0.22%, while the EGX 70 rose 0.96%.
- ▶ The EGX 30's medium-term trend appears to have turned bullish following the established breach above the previous resistance level of 5,500. We believe it is heading towards the upper boundary of the upward channel near a level of 6,500.
- ▶ Investors are advised to buy on dips. Our stop-loss limit is 5,765.

EGX 70

RESISTANCE SUPPORT

600 **553**

TARGET STOP-LOSS

575✓ **553**

Trend Status Summary

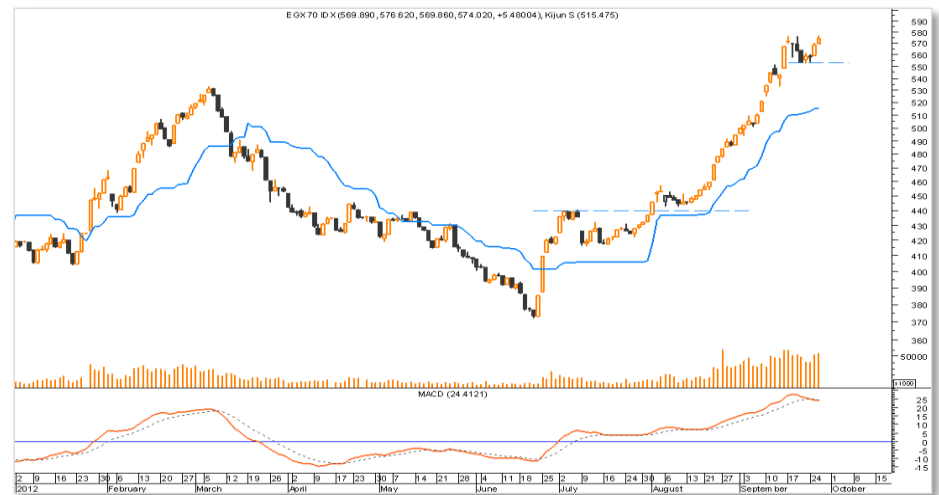
Trend	Current	Forecast
MT	Bullish	Bullish
ST	Bullish	Bullish

Close 574.02

% Change ↑0.96%

52-wk High 662.88

52-wk Low 372.20



- ▶ The EGX 70's medium-term trend appears to have turned bullish following the established breach above the previous resistance level of 535. The next target is 575, and then 660.
- ▶ Investors are advised to buy on dips. Our stop-loss limit is 553.

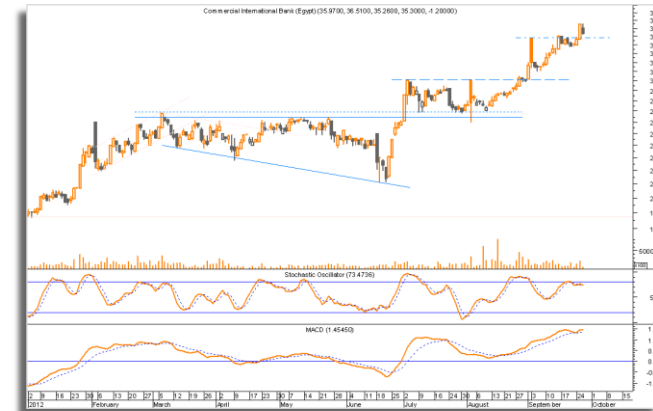
Blue Chip Charts

Orascom Construction Industries (OCIC.CA)



OCIC's breach above the major resistance level of EGP295 will trigger a buy signal that may lead it to target EGP340-350, and then EGP400.

Commercial International Bank (COMI.CA)



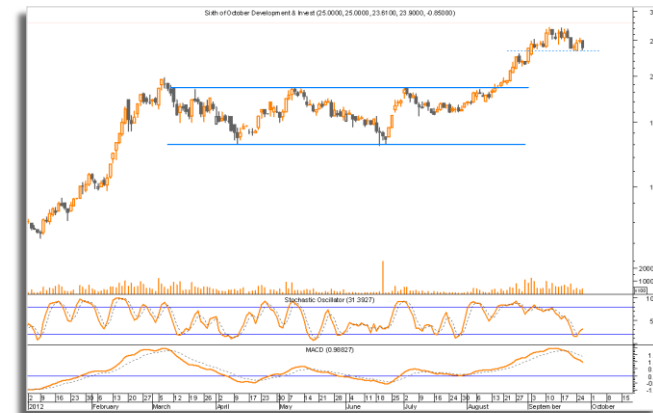
COMI breached above the resistance level of EGP30.15; the short-term trend has therefore turned bullish. Our target is EGP36.40 followed by EGP39.00.

Egyptian Financial Group – Hermes Holding Company (HRHO.CA)



HRHO saw a downward correction. A rebound from either EGP11.50 or EGP11.00 may represent a buy opportunity.

Sixth of October Development and Investment – SODIC (OCDI.CA)



OCDI violated the previous resistance level of EGP18.65; the short-term trend has therefore turned bullish. Our target is EGP25.80, followed by EGP28.75.

Technical Analysis of Egyptian Stocks and Trading Ideas

Blue Chips

Stock Name	Code	Supports S1	S2	Last Price	Resistances R1	R2	Target	Stop-loss	Direction	Strategy
Orascom Construction Industries	OCIC	285.50	265.00	290.00	305.00	330.00	284.00/	285.50	➡	Buy after breach of EGP295
Commercial International Bank	COMI	33.85	32.85	35.30	39.00	41.65	36.40/	33.85	⬆	Buy on dips
Orascom Telecom Holding	ORTE	3.55	3.45	3.86	4.00	4.35	4.70	3.55	⬆	Buy on dips
Egyptian Financial Group	HRHO	11.50	11.00	12.00	12.40	13.65	-	12.45	➡	Wait for buy signal
Talaat Moustafa Group	TMGH	5.00	4.75	5.67	5.85	6.00	7.85	4.75	⬆	Buy on dips
Egyptian Kuwaiti Holding (USD)	EKHO	1.29	1.25	1.33	1.43	1.51	1.41	1..29	⬆	Buy on dips
Telecom Egypt	ETEL	13.85	13.25	14.64	15.40	16.10	16.10	13.85	⬆	Sell near the target
Ezz Steel	ESRS	11.45	9.90	12.20	13.55	15.00	15.00	11.45	⬆	Buy on dips
El-Sewedy Cables	SWDY	26.00	24.60	26.50	28.00	29.95	27.60	24.60	⬆	Sell near the target
Sixth of October Development and Investment (SODIC)	OCDI	23.75	21.35	23.90	27.10	28.80	28.80	23.75	⬆	Buy on dips

Other Market Movers

Stock Name	Code	Supports S1	S2	Last Price	Resistances R1	R2	Target	Stop-loss	Direction	Strategy
Egyptians Abroad for Investments	ABRD	5.90	5.65	6.39	6.75	7.00	8.25	5.90	⬆	Buy on dips
Arab Cotton Ginning	ACGC	4.05	3.80	4.65	5.30	5.60	4.90/	4.05	⬆	Buy on dips
El-Ahli Investment and Development	AFDI	10.30	8.80	11.83	12.35	13.10	13.00	10.30	⬆	Buy on dips
Arab Polivara Spinning and Weaving	APSW	2.95	2.65	3.50	3.80	4.00	3.65/	2.65	⬆	Buy on dips
Citadel Capital	CCAP	3.95	3.55	4.60	4.90	5.50	5.75	3.95	⬆	Buy on dips
El-Ezz Porcelain	ECAP	3.25	2.90	3.58	3.70	4.20	3.55/	3.25	⬆	Buy on dips
Egyptian for Developing Building Materials	EDBM	16.05	15.55	16.66	18.35	19.10	-	16.65	➡	Wait for buy signal
Egyptian Financials and Industries	EFIC	12.40	11.45	12.83	13.90	15.00	13.90	12.40	⬆	Sell near the target
Egyptian for Tourism Resorts	EGTS	1.30	1.20	1.35	1.55	1.90	1.50	1.30	⬆	Sell near the target
Egyptian Housing Development and Reconstruction	EHDR	3.70	3.40	4.26	4.75	5.60	4.50	3.70	⬆	Buy on dips
Egyptian Electrical Cable	ELEC	0.87	0.83	0.88	0.93	0.97	1.00	0.87	⬆	Sell near the target
El Kahera Housing	ELKA	5.60	5.05	7.39	7.90	8.75	7.00/	5.60	⬆	Buy on dips
Giza General Contracting	GGCC	18.20	16.50	21.94	23.10	25.25	25.00	18.20	⬆	Buy on dips
Heliopolis Housing	HELI	21.30	19.00	22.70	24.00	25.00	24.00	21.30	⬆	Buy on dips
International Agriculture Products	IFAP	4.05	3.95	4.40	4.65	4.85	4.60/	4.05	⬆	Buy on dips
El-Nasr Cloths and Textiles	KABO	0.89	0.82	0.95	1.05	1.10	1.20	0.82	⬆	Buy on dips

Misr Chemical Industries	MICH	7.50	6.85	7.80	8.40	8.60	7.80/	6.85	↑	Buy on dips
North Cairo Mills	MILS	18.60	17.30	19.23	19.80	20.95	19.80/	18.60	↑	Buy on dips
Medinet Nasr Housing	MNHD	20.00	18.80	25.82	27.20	28.60	30.00	20.00	↑	Buy on dips
Maridive (USD)	MOIL	1.16	1.10	1.19	1.33	1.55	-	1.21	➡	Wait for buy signal
Nile Cotton Ginning	NCGC	6.30	5.45	NA	7.65	8.85	-	6.30	➡	Trading range
Palm Hills	PHDC	2.80	2.45	3.13	3.55	4.45	3.75	2.45	↑	Buy on dips
Pioneers Holdings for Financial Investments	PIOH	5.50	4.85	5.99	6.30	6.65	8.70	5.50	↑	Buy on dips
Cairo Poultry	POUL	8.55	8.30	8.91	9.20	10.00	9.40	8.55	↑	Buy on dips
SidiKerir Petrochemical	SKPC	13.60	13.05	13.61	14.25	14.90	13.80/	13.05	↑	Buy on dips
Alexandria Spinning & Weaving	SPIN	1.26	1.18	1.38	1.55	1.70	1.65	1.26	↑	Buy on dips
Upper Egypt General Contractor	UEGC	1.39	1.31	1.57	1.60	2.05	1.60/	1.39	↑	Buy on dips
Extracted Oils	ZEOT	1.01	0.91	1.12	1.15	1.25	1.05/	1.01	↑	Buy after breach of EGP1.10

Most Active by Turnover (Value)

Stock Name	Code	Supports S1 S2		Last Price	Resistances R1 R2		Target	Stop-loss	Direction	Strategy
Talaat Moustafa Group	TMGH	5.00	4.75	5.67	5.85	6.00	7.85	4.75	↑	Buy on dips
Palm Hills	PHDC	2.80	2.45	3.13	3.55	4.45	3.75	2.45	↑	Buy on dips
Orascom Telecom Holding	ORTE	3.55	3.45	3.86	4.00	4.35	4.70	3.55	↑	Buy on dips
Egyptian Financial Group	HRHO	11.50	11.00	12.00	12.40	13.65	-	12.45	➡	Wait for buy signal
Citadel Capital	CCAP	3.95	3.55	4.60	4.90	5.50	5.75	3.95	↑	Buy on dips

Most Active by Volume

Stock Name	Code	Supports S1 S2		Last Price	Resistances R1 R2		Target	Stop-loss	Direction	Strategy
Palm Hills	PHDC	2.80	2.45	3.13	3.55	4.45	3.75	2.45	↑	Buy on dips
Upper Egypt General Contractor	UEGC	1.39	1.31	1.57	1.60	2.05	1.60/	1.39	↑	Buy on dips
Orascom Telecom Holding	ORTE	3.55	3.45	3.86	4.00	4.35	4.70	3.55	↑	Buy on dips
Talaat Moustafa Group	TMGH	5.00	4.75	5.67	5.85	6.00	7.85	4.75	↑	Buy on dips
Citadel Capital	CCAP	3.95	3.55	4.60	4.90	5.50	5.75	3.95	↑	Buy on dips

Disclosure Appendix

Definitions

Close: Last price.

S/T: Short-term trend (from 1 to 4 weeks).

M/T: Medium-term trend (from 3 to 9 months).

UP TREND: Higher lows and higher highs.

DOWN TREND: Lower highs and lower lows.

SIDEWAYS TREND: Flat trend ranging between horizontal support and horizontal resistance.

UPWARD CORRECTION: A move in the opposite direction of a down trend.

DOWNWARD CORRECTION: A move in the opposite direction of an uptrend.

TAKE PROFIT: Stock approaching the target, partially realize profits or hold for second target.

BUY FOR TRADE: A short-term Buy recommendation to take advantage from an upward correction move during a down trend.

SELL RALLIES: A Sell recommendation during an upward correction move.

(√): Target hit with a 1% variance up or down.

TRADE RANGE: Move between support and resistance in a sideways trend.

STOP LOSS: A Sell recommendation when the closing price of a stock breaks a certain point to the downside. (Two days close below this point or violated by 1 to 2%)

TRADING ISSUES: Describes stocks that are trading sideways between upper and lower bands. Traders may trade the range at their own discretion; buying near the lower level and selling near the upper level.

Targets: A portion of the position should be closed whenever a target is hit. Targets should be considered as profit-taking levels

Disclaimer

This report is based on information available to the public. It is not intended as an offer to buy or sell or a solicitation of an offer to buy or sell the securities mentioned. The information and opinions in this report were prepared by Naeem Technical Analysis Department from sources it believes to be reliable at time of publication. Naeem Technical Analysis Department accepts no liability or legal responsibility for losses or damages incurred arising from the use of this publication or its contents. Naeem Technical Analysis Department has the right to change opinions expressed in this report without prior notice.

Research Contacts

Ibrahim El Nemr, CFTe	Head of Technical Analysis Desk	Ext. 5330	ibrahim.elnemr@naeemholding.com
The Technical Analysis Team, Egypt	+202 33005330	Fax: +2-02-33469276	The Technical Analysis Team, Egypt

Sales and Trading Contacts

Sherine Ezzat	Regional Director, MENA Trading, Foreign Markets & GDRs	+202 33042263	sherine.ezzat@naeemholding.com
Teymour El Derini	Director of MENA Sales & Trading	+202 33054211	teymour.elderini@naeemholding.com
Tarek Abaza	Head of Trading Desk - Egypt	+202 33037766/677	tarek.abaza@naeemholding.com