

**EGX 30**

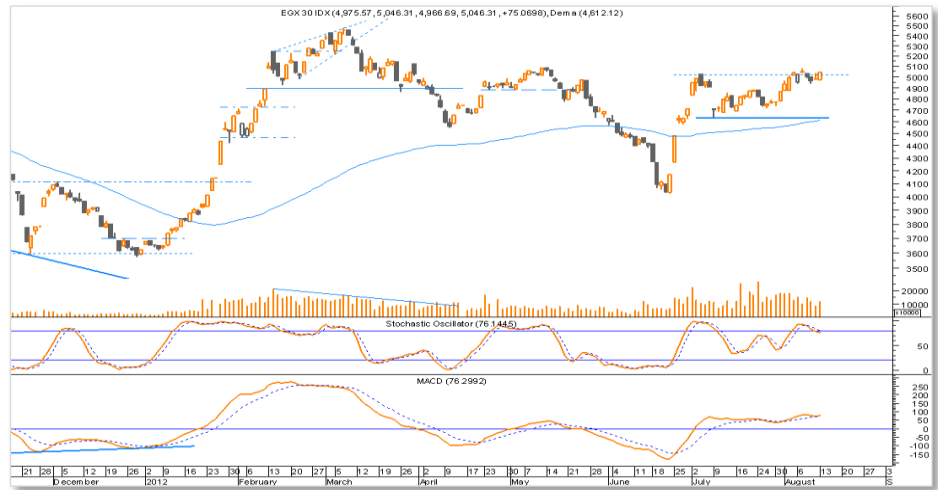
<b>RESISTANCE</b>	<b>SUPPORT</b>
<b>5,085</b>	<b>4,935</b>
<b>TARGET</b>	<b>STOP-LOSS</b>
<b>5,450</b>	<b>4,935</b>

**Trend Status Summary**

Trend	Current	Forecast
MT	Flat	Flat
ST	Flat	Flat

<b>Close</b>	5,046.31
<b>% Change</b>	<b>↑1.51%</b>
<b>52-wk High</b>	5,666.55
<b>52-wk Low</b>	3,578.12

**Market post a mixed performance**



- ▶ The EGX 30 rose 1.51%, while the EGX 70 fell 0.11%.
- ▶ The EGX 30 managed to violate the resistance level range of 5,020-5,085. A confirmed breach above that range could lead the EGX 30 to climb toward the target range of 5,450-5,500.
- ▶ Investors are advised to buy on dips as long as the EGX 30 stays above 4,935. Our stop-loss limit is 4,935.

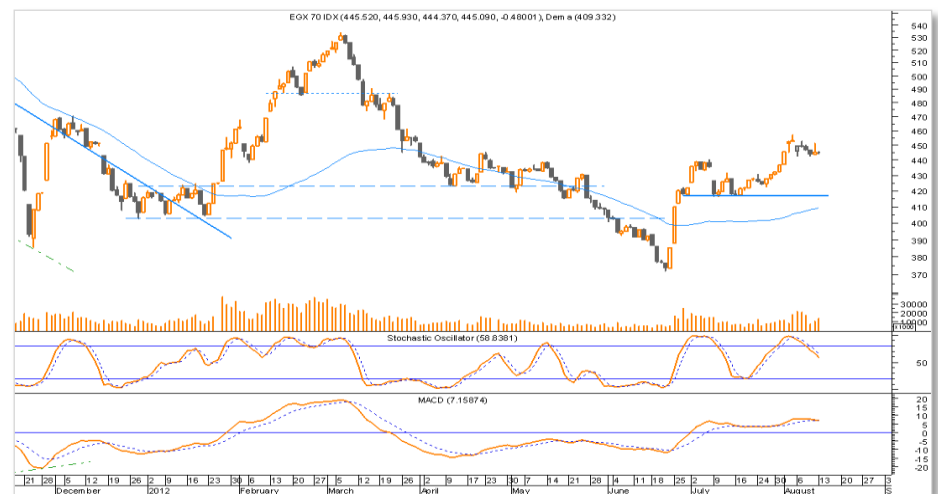
**EGX 70**

<b>RESISTANCE</b>	<b>SUPPORT</b>
<b>460</b>	<b>440</b>
<b>TARGET</b>	<b>STOP-LOSS</b>
<b>460</b>	<b>440</b>

**Trend Status Summary**

Trend	Current	Forecast
MT	Flat	Flat
ST	Bullish	Bullish

<b>Close</b>	445.09
<b>% Change</b>	<b>↓0.11%</b>
<b>52-wk High</b>	662.88
<b>52-wk Low</b>	372.20



- ▶ The EGX 70 violated the resistance level of 440-445; turning the short-term trend bullish. It will now target 460 and then 485.
- ▶ Investors are advised to buy on dips. Our stop-loss limit is 440.

Blue Chip Charts

Orascom Construction Industries (OCIC.CA)



OCIC violated the resistance level of EGP261.00 and is now targeting EGP284.00. Our stop-loss level is EGP246.00.

Commercial International Bank (COMI.CA)



COMI has been swinging between a support level of EGP26.90 and a resistance level of EGP30.00. Investors are advised to trade within that range. Our stop-loss limit is EGP26.90.

Egyptian Financial Group – Hermes Holding Company (HRHO.CA)



HRHO bounced back from the lower boundary of the falling channel. A breach above EGP11.00 is likely to lead it to EGP11.50, and then EGP12.00.

Sixth of October Development and Investment – SODIC (OCDI.CA)



OCDI is fluctuating within a wide trading range, with EGP13.00 as the support and EGP18.65 as resistance. Buy near the support or after the resistance is breached.

## Technical Analysis of Egyptian Stocks and Trading Ideas

Blue Chips										
Stock Name	Code	Supports		Last Price	Resistances		Target	Stop-loss	Direction	Strategy
		S1	S2		R1	R2				
Orascom Construction Industries	<b>OCIC</b>	265.00	246.00	<b>275.00</b>	285.00	295.00	284.00	265.00	➡	Trading range
Commercial International Bank	<b>COMI</b>	26.90	24.50	<b>28.02</b>	30.00	31.70	-	26.90	➡	Trading range
Orascom Telecom Holding	<b>ORTE</b>	3.45	3.18	<b>3.64</b>	3.75	4.00	3.75	3.45	⬆	Sell near the target
Egyptian Financial Group	<b>HRHO</b>	10.45	10.00	<b>10.64</b>	11.65	12.50	-	10.45	➡	Trading range
Talaat Moustafa Group	<b>TMGH</b>	3.95	3.75	<b>4.25</b>	4.15	4.50	4.50	3.95	⬆	Sell near the target
Egyptian Kuwaiti Holding (USD)	<b>EKHO</b>	1.19	1.16	<b>1.24</b>	1.25	1.35	1.25/	1.19	⬆	Sell near the target
Telecom Egypt	<b>ETEL</b>	12.65	12.40	<b>13.18</b>	13.85	14.50	-	11.65	➡	Trading range
Ezz Steel	<b>ESRS</b>	7.40	7.00	<b>8.20</b>	8.40	9.05	9.25	7.40	⬆	Sell near the target
El-Sewedy Cables	<b>SWDY</b>	21.50	20.90	<b>22.30</b>	24.00	25.00	-	20.90	➡	Trading range
Sixth of October Development and Investment (SODIC)	<b>OCDI</b>	15.60	13.00	<b>18.20</b>	18.65	19.80	-	15.60	➡	Trading range

Other Market Movers										
Stock Name	Code	Supports		Last Price	Resistances		Target	Stop-loss	Direction	Strategy
		S1	S2		R1	R2				
Egyptians Abroad for Investments	<b>ABRD</b>	4.40	3.70	<b>4.80</b>	4.95	5.15	4.95/	4.40	⬆	Buy on dips
Arab Cotton Ginning	<b>ACGC</b>	2.50	2.30	<b>2.59</b>	2.62	2.75	-	2.50	➡	Trading range
El-Ahli Investment and Development	<b>AFDI</b>	6.90	6.50	<b>7.40</b>	8.00	8.20	8.60	6.90	⬆	Sell near the target
Arab Polivara Spinning and Weaving	<b>APSW</b>	1.85	1.57	<b>1.93</b>	2.18	2.28	-	1.85	➡	Trading range
Citadel Capital	<b>CCAP</b>	2.85	2.80	<b>3.07</b>	3.16	3.45	-	2.80	➡	Trading range
El-Ezz Porcelain	<b>ECAP</b>	2.30	2.07	<b>2.53</b>	2.65	2.75	2.75	2.30	➡	Trading range
Egyptian for Developing Building Materials	<b>EDBM</b>	13.50	12.00	<b>14.54</b>	15.10	16.65	16.30	13.50	➡	Trading range
Egyptian Financials and Industries	<b>EFIC</b>	10.00	9.50	<b>10.20</b>	10.65	11.45	-	9.50	➡	Trading range
Egyptian for Tourism Resorts	<b>EGTS</b>	1.05	1.00	<b>1.10</b>	1.21	1.32	-	1.05	➡	Trading range
Egyptian Housing Development and Reconstruction	<b>EHDR</b>	2.60	2.45	<b>2.76</b>	2.90	3.00	3.00	2.60	⬆	Sell near the target
Egyptian Electrical Cable	<b>ELEC</b>	0.73	0.68	<b>0.82</b>	0.84	0.88	-	0.73	➡	Trading range
El Kahera Housing	<b>ELKA</b>	4.05	3.90	<b>4.26</b>	4.25	4.45	-	4.05	➡	Trading range
Giza General Contracting	<b>GGCC</b>	16.80	15.50	<b>17.50</b>	18.80	20.50	20.50	15.50	⬆	Sell near the target
Heliopolis Housing	<b>HELI</b>	14.55	14.30	<b>15.00</b>	15.50	16.50	-	14.30	➡	Trading range
International Agriculture Products	<b>IFAP</b>	2.50	2.25	<b>2.63</b>	2.80	2.95	-	2.50	➡	Trading range
El-Nasr Cloths and Textiles	<b>KABO</b>	0.63	0.58	<b>0.66</b>	0.71	0.77	-	0.63	➡	Trading range

Misr Chemical Industries	<b>MICH</b>	5.50	5.10	<b>5.63</b>	6.00	6.25	-	5.10	➡	Trading range
North Cairo Mills	<b>MILS</b>	17.35	16.90	<b>17.60</b>	18.20	18.80	17.70/	16.90	⬆	Sell near the target
Medinet Nasr Housing	<b>MNHD</b>	15.10	14.00	<b>16.09</b>	16.15	18.00	-	15.10	➡	Trading range
Maridive (USD)	<b>MOIL</b>	1.05	0.98	<b>1.12</b>	1.16	1.28	-	1.05	➡	Trading range
Nile Cotton Ginning	<b>NGGC</b>	6.30	5.45	<b>NA</b>	7.65	8.85	-	6.30	➡	Trading range
Palm Hills	<b>PHDC</b>	2.00	1.92	<b>2.09</b>	2.15	2.40	2.30	1.92	➡	Trading range
Pioneers Holdings for Financial Investments	<b>PIOH</b>	3.70	3.15	<b>4.18</b>	4.50	4.90	-	3.70	➡	Trading range
Cairo Poultry	<b>POUL</b>	7.25	6.60	<b>7.90</b>	8.00	8.95	-	7.25	➡	Trading range
SidiKerir Petrochemical	<b>SKPC</b>	12.10	11.40	<b>12.90</b>	12.95	13.25	-	12.10	➡	Trading range
Alexandria Spinning & Weaving	<b>SPIN</b>	1.03	0.96	<b>1.06</b>	1.08	1.13	-	1.03	➡	Trading range
Upper Egypt General Contractor	<b>UEGC</b>	1.07	0.93	<b>1.14</b>	1.25	1.33	1.33	1.07	⬆	Sell near the target
Extracted Oils	<b>ZEOT</b>	0.85	0.80	<b>0.87</b>	0.92	0.96	-	0.85	➡	Trading range

### Most Active by Turnover (Value)

Stock Name	Code	Supports		Last Price	Resistances		Target	Stop-loss	Direction	Strategy
		S1	S2		R1	R2				
Commercial International Bank	<b>COMI</b>	26.90	24.50	<b>28.02</b>	30.00	31.70	-	26.90	➡	Trading range
Orascom Telecom Holding	<b>ORTE</b>	3.45	3.18	<b>3.64</b>	3.75	4.00	3.75	3.45	⬆	Sell near the target
Orascom Construction Industries	<b>OCIC</b>	265.00	246.00	<b>275.00</b>	285.00	295.00	284.00	265.00	➡	Trading range
Egyptian Financial Group	<b>HRHO</b>	10.45	10.00	<b>10.64</b>	11.65	12.50	-	10.45	➡	Trading range
Ezz Steel	<b>ESRS</b>	7.40	7.00	<b>8.20</b>	8.40	9.05	9.25	7.40	⬆	Sell near the target

### Most Active by Volume

Stock Name	Code	Supports		Last Price	Resistances		Target	Stop-loss	Direction	Strategy
		S1	S2		R1	R2				
Orascom Telecom Holding	<b>ORTE</b>	3.45	3.18	<b>3.64</b>	3.75	4.00	3.75	3.45	⬆	Sell near the target
Palm Hills	<b>PHDC</b>	2.00	1.92	<b>2.09</b>	2.15	2.40	2.30	1.92	➡	Trading range
Citadel Capital	<b>CCAP</b>	2.85	2.80	<b>3.07</b>	3.16	3.45	-	2.80	➡	Trading range
Talaat Moustafa Group	<b>TMGH</b>	3.95	3.75	<b>4.25</b>	4.15	4.50	4.50	3.95	⬆	Sell near the target
Egyptian for Tourism Resorts	<b>EGTS</b>	1.05	1.00	<b>1.10</b>	1.21	1.32	-	1.05	➡	Trading range

# Disclosure Appendix

## Definitions

**Close:** Last price.

**S/T:** Short-term trend (from 1 to 4 weeks).

**M/T:** Medium-term trend (from 3 to 9 months).

**UP TREND:** Higher lows and higher highs.

**DOWN TREND:** Lower highs and lower lows.

**SIDEWAYS TREND:** Flat trend ranging between horizontal support and horizontal resistance.

**UPWARD CORRECTION:** A move in the opposite direction of a down trend.

**DOWNWARD CORRECTION:** A move in the opposite direction of an uptrend.

**TAKE PROFIT:** Stock approaching the target, partially realize profits or hold for second target.

**BUY FOR TRADE:** A short-term Buy recommendation to take advantage from an upward correction move during a down trend.

**SELL RALLIES:** A Sell recommendation during an upward correction move.

**(√):** Target hit with a 1% variance up or down.

**TRADE RANGE:** Move between support and resistance in a sideways trend.

**STOP LOSS:** A Sell recommendation when the closing price of a stock breaks a certain point to the downside. (Two days close below this point or violated by 1 to 2%)

**TRADING ISSUES:** Describes stocks that are trading sideways between upper and lower bands. Traders may trade the range at their own discretion; buying near the lower level and selling near the upper level.

**Targets:** A portion of the position should be closed whenever a target is hit. Targets should be considered as profit-taking levels

## Disclaimer

This report is based on information available to the public. It is not intended as an offer to buy or sell or a solicitation of an offer to buy or sell the securities mentioned. The information and opinions in this report were prepared by Naeem Technical Analysis Department from sources it believes to be reliable at time of publication. Naeem Technical Analysis Department accepts no liability or legal responsibility for losses or damages incurred arising from the use of this publication or its contents. Naeem Technical Analysis Department has the right to change opinions expressed in this report without prior notice.

---

## Research Contacts

Ibrahim El Nemr, CFTe	Head of Technical Analysis Desk	Ext. 5330	<a href="mailto:ibrahim.elnemr@naeemholding.com">ibrahim.elnemr@naeemholding.com</a>
The Technical Analysis Team, Egypt	+202 33005330	Fax: +2-02-33469276	The Technical Analysis Team, Egypt

## Sales and Trading Contacts

Sherine Ezzat	Regional Director, MENA Trading, Foreign Markets & GDRs	+202 33042263	<a href="mailto:sherine.ezzat@naeemholding.com">sherine.ezzat@naeemholding.com</a>
Teymour El Derini	Director of MENA Sales & Trading	+202 33054211	<a href="mailto:teymour.elderini@naeemholding.com">teymour.elderini@naeemholding.com</a>
Tarek Abaza	Head of Trading Desk - Egypt	+202 33037766/677	<a href="mailto:tarek.abaza@naeemholding.com">tarek.abaza@naeemholding.com</a>