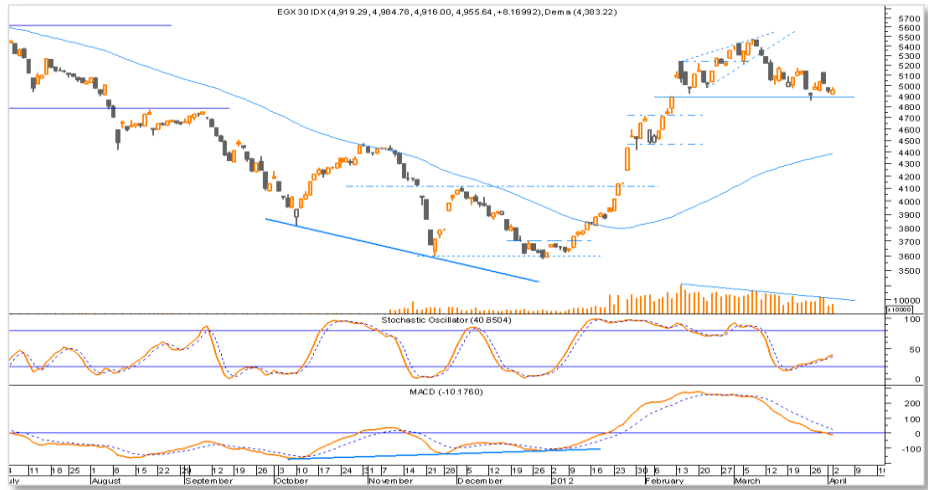


## A mixed day

EGX 30		
RESISTANCE	SUPPORT	
<b>5,170</b>	<b>4,860</b>	
TARGET	STOP-LOSS	
-	<b>4,860</b>	
Trend Status Summary		
Trend	Current	Forecast
MT	Flat	Flat
ST	Flat	Flat
<b>Close</b>	4,955.64	
<b>% Change</b>	↑ <b>0.17%</b>	
<b>52-wk High</b>	5,666.55	
<b>52-wk Low</b>	3,578.12	



- ▶ The EGX 30 fell 0.17%, while the EGX 70 declined 0.81%.
- ▶ The EGX 30 bounced back from the support level of 4,860, and according to the current flat trend, we expect it to fluctuate between the support level of 4,860 and the resistance level of 5,170.
- ▶ Investors are advised to trade within the trading range. Our stop-loss limit is 4,860.

EGX 70		
RESISTANCE	SUPPORT	
<b>468.00</b>	<b>425.00</b>	
TARGET	STOP-LOSS	
-	<b>465.00 Hit</b>	
Trend Status Summary		
Trend	Current	Forecast
MT	Flat	Flat
ST	Bearish	Bearish
<b>Close</b>	438.67	
<b>% Change</b>	↓ <b>0.81%</b>	
<b>52-wk High</b>	662.88	
<b>52-wk Low</b>	385.69	



- ▶ The EGX 70 breached below the support level of 468 and the short-term trend turned to bearish from flat, targeting a support level of 440.
- ▶ Investors are advised to sell the rally.

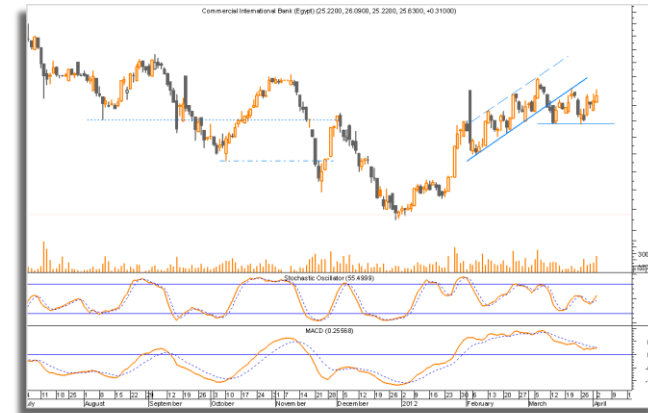
Blue Chip Charts

Orascom Construction Industries (OCIC.CA)



OCI bounced back from the support level of EGP250.00, and according to the current flat trend, we expect it to swing between the support and resistance levels.

Commercial International Bank (COMI.CA)



CIB bounced back from the support level of EGP23.85, and according to the current flat trend, we expect it to swing between the support and resistance levels.

Egyptian Financial Group (HRHO.CA)



HRHO bounced back from the support level of EGP12.50, and according to the current flat trend, we expect it to swing between the support and resistance levels.

Sixth of October Development and Investment – SODIC (OCDI.CA)



SODIC bounced back from the support level of EGP15.00, and according to the current flat trend, we expect it to swing between the support and resistance levels.

## Technical Analysis of Egyptian Stocks and Trading Ideas

Blue Chips										
Stock Name	Code	Supports		Last Price	Resistances		Target	Stop-loss	Direction	Strategy
		S1	S2		R1	R2				
Orascom Construction Industries	<b>OCIC</b>	247.50	235.00	<b>257.00</b>	267.00	280.00	-	247.50	➡	Trading range
Commercial International Bank	<b>COMI</b>	23.85	23.00	<b>25.63</b>	26.20	26.90	-	23.85	➡	Trading range
Orascom Telecom Holding	<b>ORTE</b>	3.80	3.40	<b>3.83</b>	4.65	4.80	-	3.80	➡	Trading range
Egyptian Financial Group	<b>HRHO</b>	12.45	10.80	<b>12.85</b>	14.40	16.80	-	12.45	➡	Trading range
TalaatMoustafa Group	<b>TMGH</b>	<u>3.90</u>	3.60	<b>3.85</b>	4.50	5.15	-	<u>3.90</u>	➡	Trading range
Egyptian Kuwaiti Holding (USD)	<b>EKHO</b>	1.11	1.05	<b>1.14</b>	1.25	1.35	-	1.11	➡	Trading range
Telecom Egypt	<b>ETEL</b>	13.45	13.15	<b>13.92</b>	14.65	15.40	-	<b>15.40</b>	⬇	Sell the rally
Egyptian Company for Mobile Services (Mobinil)	<b>EMOB</b>	169.00	113.00	<b>178.81</b>	185.00	192.00	192.00	169.00	➡	Sell near the target
Ezz Steel	<b>ESRS</b>	6.45	6.05	<b>6.56</b>	7.70	8.40	-	6.45	➡	Trading range
El-Sewedy Cables	<b>SWDY</b>	21.30	19.50	<b>23.20</b>	24.00	25.00	-	<b>26.00</b>	⬇	Sell the rally
Sixth of October Development and Investment (SODIC)	<b>OCDI</b>	15.00	14.10	<b>15.03</b>	18.40	19.80	-	15.00	➡	Trading range

Other Market Movers										
Stock Name	Code	Supports		Last Price	Resistances		Target	Stop-loss	Direction	Strategy
		S1	S2		R1	R2				
Egyptians Abroad for Investments	<b>ABRD</b>	3.15	3.00	<b>3.31</b>	3.55	3.90	-	<b>3.55</b>	⬇	Sell the rally
Arab Cotton Ginning	<b>ACGC</b>	2.70	2.40	<b>2.74</b>	3.00	3.25	-	2.70	⬇	Sell the rally
El-Ahli Investment and Development	<b>AFDI</b>	6.55	6.25	<b>6.61</b>	7.30	8.20	-	<b>7.30</b>	⬇	Sell the rally
Arab Polivara Spinning and Weaving	<b>APSW</b>	1.77	1.65	<b>1.80</b>	2.05	2.25	-	1.77	➡	Sell the rally
Citadel Capital	<b>CCAP</b>	2.75	2.45	<b>2.93</b>	3.40	3.80	-	<b>3.10</b>	⬇	Sell the rally
El-Ezz Porcelain	<b>ECAP</b>	2.00	1.90	<b>2.04</b>	2.20	2.50	-	<b>2.15</b>	⬇	Sell the rally
Egyptian for Developing Building Materials	<b>EDBM</b>	13.50	12.40	<b>13.62</b>	15.20	16.65	-	<b>16.80</b>	⬇	Sell the rally
Egyptian Financials and Industries	<b>EFIC</b>	9.00	8.70	<b>9.70</b>	11.10	11.85	-	<b>10.00</b>	⬇	Sell the rally
Egyptian for Tourism Resorts	<b>EGTS</b>	0.97	0.91	<b>1.03</b>	1.09	1.19	-	<b>1.32</b>	⬇	Sell the rally
Egyptian Housing Development and Reconstruction	<b>EHDR</b>	2.30	2.10	<b>2.33</b>	2.50	2.75	-	<b>2.50</b>	⬇	Sell the rally
Egyptian Electrical Cable	<b>ELEC</b>	0.83	0.78	<b>0.83</b>	0.87	0.91	-	<b>0.86</b>	⬇	Sell the rally
El Kahera Housing	<b>ELKA</b>	4.25	4.00	<b>4.45</b>	4.80	5.05	-	<b>4.50</b>	⬇	Sell the rally
Giza General Contracting	<b>GGCC</b>	11.70	10.80	<b>11.77</b>	12.80	13.85	-	<b>13.90</b>	⬇	Sell the rally
Heliopolis Housing	<b>HELI</b>	14.70	12.80	<b>14.88</b>	15.25	16.10	-	<b>15.15</b>	⬇	Sell the rally
International Agriculture Products	<b>IFAP</b>	2.55	2.40	<b>2.58</b>	2.70	2.95	-	<b>2.70</b>	⬇	Sell the rally
El-Nasr Cloths and Textiles	<b>KABO</b>	0.61	0.56	<b>0.64</b>	0.73	0.80	-	<b>0.67</b>	⬇	Sell the rally

Misr Chemical Industries	<b>MICH</b>	<u>5.00</u>	4.90	<b>4.97</b>	5.45	6.00	-	<u>5.00</u>	➡	Sell the rally
North Cairo Mills	<b>MILS</b>	15.50	15.05	<b>15.86</b>	16.65	17.25	-	15.50	➡	Watch your stop-loss
Medinet Nasr Housing	<b>MNHD</b>	14.50	12.50	<b>15.40</b>	15.70	16.80	-	<b>15.75</b>	⬇	Sell the rally
Maridive (USD)	<b>MOIL</b>	1.25	1.18	<b>1.25</b>	1.31	1.55	-	<b>1.31</b>	⬇	Sell the rally
Nile Cotton Ginning	<b>NCGC</b>	6.30	5.45	<b>NA</b>	7.65	8.85	-	6.30	➡	Trading range
Palm Hills	<b>PHDC</b>	1.50	1.35	<b>1.59</b>	1.85	2.07	-	<b>1.77</b>	⬇	Sell the rally
Pioneers Holdings for Financial Investments	<b>PIOH</b>	3.55	3.25	<b>3.67</b>	3.85	4.25	-	<b>3.80</b>	⬇	Sell the rally
Cairo Poultry	<b>POUL</b>	8.50	7.50	<b>8.63</b>	8.95	9.50	-	<b>10.70 Hit</b>	⬇	Sell the rally
SidiKerir Petrochemical	<b>SKPC</b>	13.25	12.95	<b>14.10</b>	14.40	15.50	-	<b>14.50 Hit</b>	⬇	Sell the rally
Alexandria Spinning & Weaving	<b>SPIN</b>	0.90	0.83	<b>0.92</b>	0.96	1.06	-	<b>0.96</b>	⬇	Sell the rally
Upper Egypt General Contractor	<b>UEGC</b>	<u>1.21</u>	1.14	<b>1.20</b>	1.47	1.60	-	<u>1.21</u>	➡	Trading range
Extracted Oils	<b>ZEOT</b>	0.80	0.75	<b>0.84</b>	0.88	1.00	-	<b>0.88</b>	⬇	Sell the rally

### Most Active by Turnover (Value)

Stock Name	Code	Supports		Last Price	Resistances		Target	Stop-loss	Direction	Strategy
		S1	S2		R1	R2				
Commercial International Bank	<b>COMI</b>	23.85	23.00	<b>25.63</b>	26.20	26.90	-	23.85	➡	Trading range
Telecom Egypt	<b>ETEL</b>	13.45	13.15	<b>13.92</b>	14.65	15.40	-	<b>15.40</b>	⬇	Sell the rally
Egyptian Financial Group	<b>HRHO</b>	12.45	10.80	<b>12.85</b>	14.40	16.80	-	12.45	➡	Trading range
Orascom Telecom Holding	<b>ORTE</b>	3.80	3.40	<b>3.83</b>	4.65	4.80	-	3.80	➡	Trading range
Orascom Construction Industries	<b>OCIC</b>	247.50	235.00	<b>257.00</b>	267.00	280.00	-	247.50	➡	Trading range

### Most Active by Volume

Stock Name	Code	Supports		Last Price	Resistances		Target	Stop-loss	Direction	Strategy
		S1	S2		R1	R2				
Orascom Telecom Holding	<b>ORTE</b>	3.80	3.40	<b>3.83</b>	4.65	4.80	-	3.80	➡	Trading range
Palm Hills	<b>PHDC</b>	1.50	1.35	<b>1.59</b>	1.85	2.07	-	<b>1.77</b>	⬇	Sell the rally
TalaatMoustafa Group	<b>TMGH</b>	<u>3.90</u>	3.60	<b>3.85</b>	4.50	5.15	-	<u>3.90</u>	➡	Trading range
Egyptian for Tourism Resorts	<b>EGTS</b>	0.97	0.91	<b>1.03</b>	1.09	1.19	-	<b>1.32</b>	⬇	Sell the rally
Commercial International Bank	<b>COMI</b>	23.85	23.00	<b>25.63</b>	26.20	26.90	-	23.85	➡	Trading range

# Disclosure Appendix

## Definitions

**Close:** Last price.

**S/T:** Short-term trend (from 1 to 4 weeks).

**M/T:** Medium-term trend (from 3 to 9 months).

**UP TREND:** Higher lows and higher highs.

**DOWN TREND:** Lower highs and lower lows.

**SIDEWAYS TREND:** Flat trend ranging between horizontal support and horizontal resistance.

**UPWARD CORRECTION:** A move in the opposite direction of a down trend.

**DOWNWARD CORRECTION:** A move in the opposite direction of an uptrend.

**TAKE PROFIT:** Stock approaching the target, partially realize profits or hold for second target.

**BUY FOR TRADE:** A short-term Buy recommendation to take advantage from an upward correction move during a down trend.

**SELL RALLIES:** A Sell recommendation during an upward correction move.

**(√):** Target hit with a 1% variance up or down.

**TRADE RANGE:** Move between support and resistance in a sideways trend.

**STOP LOSS:** A Sell recommendation when the closing price of a stock breaks a certain point to the downside. (Two days close below this point or violated by 1 to 2%)

**TRADING ISSUES:** Describes stocks that are trading sideways between upper and lower bands. Traders may trade the range at their own discretion; buying near the lower level and selling near the upper level.

**Targets:** A portion of the position should be closed whenever a target is hit. Targets should be considered as profit-taking levels

## Disclaimer

This report is based on information available to the public. It is not intended as an offer to buy or sell or a solicitation of an offer to buy or sell the securities mentioned. The information and opinions in this report were prepared by Naeem Technical Analysis Department from sources it believes to be reliable at time of publication. Naeem Technical Analysis Department accepts no liability or legal responsibility for losses or damages incurred arising from the use of this publication or its contents. Naeem Technical Analysis Department has the right to change opinions expressed in this report without prior notice.

---

## Research Contacts

Ibrahim El Nemr, CFTe	Head of Technical Analysis Desk	Ext. 5330	<a href="mailto:ibrahim.elnemr@naeemholding.com">ibrahim.elnemr@naeemholding.com</a>
The Technical Analysis Team, Egypt	+202 33005330	Fax: +2-02-33469276	The Technical Analysis Team, Egypt

## Sales and Trading Contacts

Sherine Ezzat	Regional Director, MENA Trading, Foreign Markets & GDRs	+202 33042263	<a href="mailto:sherine.ezzat@naeemholding.com">sherine.ezzat@naeemholding.com</a>
Teymour El Derini	Sales Manager, MENA Markets	+202 33054211	<a href="mailto:teymour.elderini@naeemholding.com">teymour.elderini@naeemholding.com</a>
Tarek Abaza	Head of Trading Desk - Egypt	+202 33037766/677	<a href="mailto:tarek.abaza@naeemholding.com">tarek.abaza@naeemholding.com</a>

---